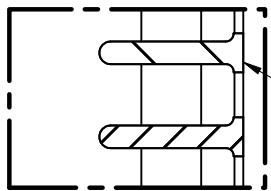
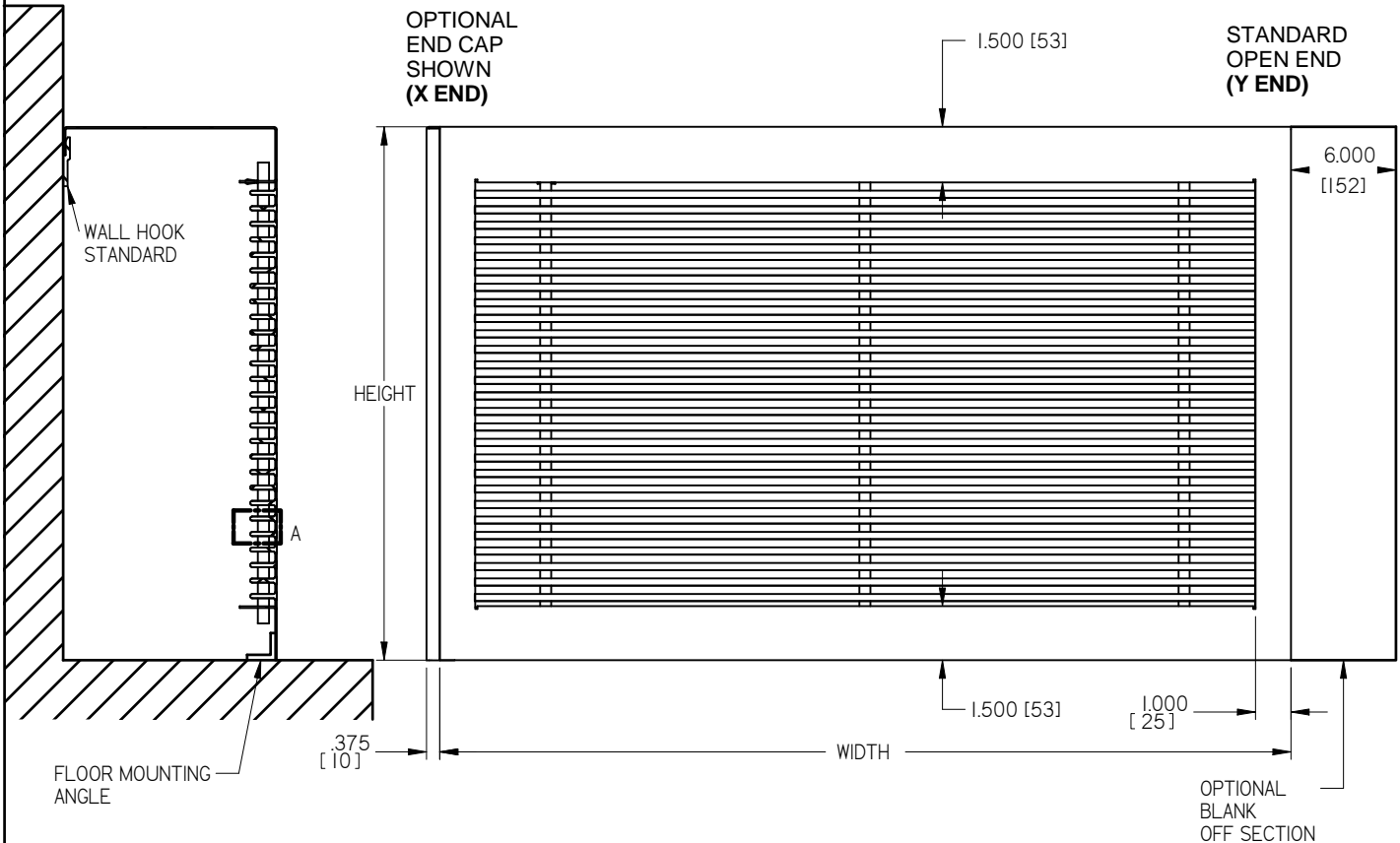


DLE - LINEAR ENCLOSURE DISPLACEMENT DIFFUSER



DLE TYPE 25C CORE
PENCIL PROOF
0° DEFLECTION
7/16" (III) SPACING

Standard Available Sizes			
Imperial		Metric	
Width	Height	Width	Height
24, 30, 36, 42, 48, 54, 60	RANGE FROM 6" TO 18" IN 3" INCREMENTS	610, 762, 914, 1067, 1219, 1372, 1524	RANGE FROM 152mm TO 457mm IN 76mm INCREMENTS

STANDARD CONSTRUCTION:

- 18 ga. STEEL BODY, END CAP,
- EXTRUDED ALUMINUM CORE AND WALL HOOK

FASTENING:

- WALL HOOK
- FLOOR MOUNTING ANGLE

OPTIONS:

- X END CONDITION (END CAP LEFT OR RIGHT, SEE ORDERING PROCEDURES)
- S END CONDITION (MALE END FOR MULTIPLE DLE CONNECTION)
- DLEBS6 ACCESSORY (BLANK OFF SECTION TO COVER JUNCTIONS)

FINISH:

- B12 WHITE
- (OPTIONAL FINISHES AVAILABLE)

NOTES:

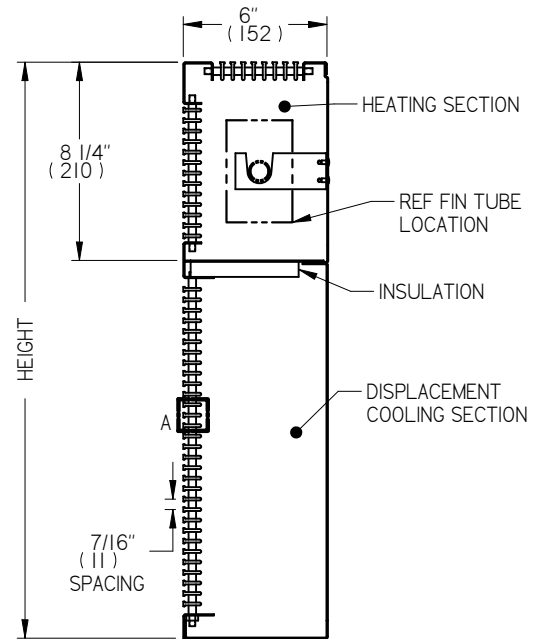
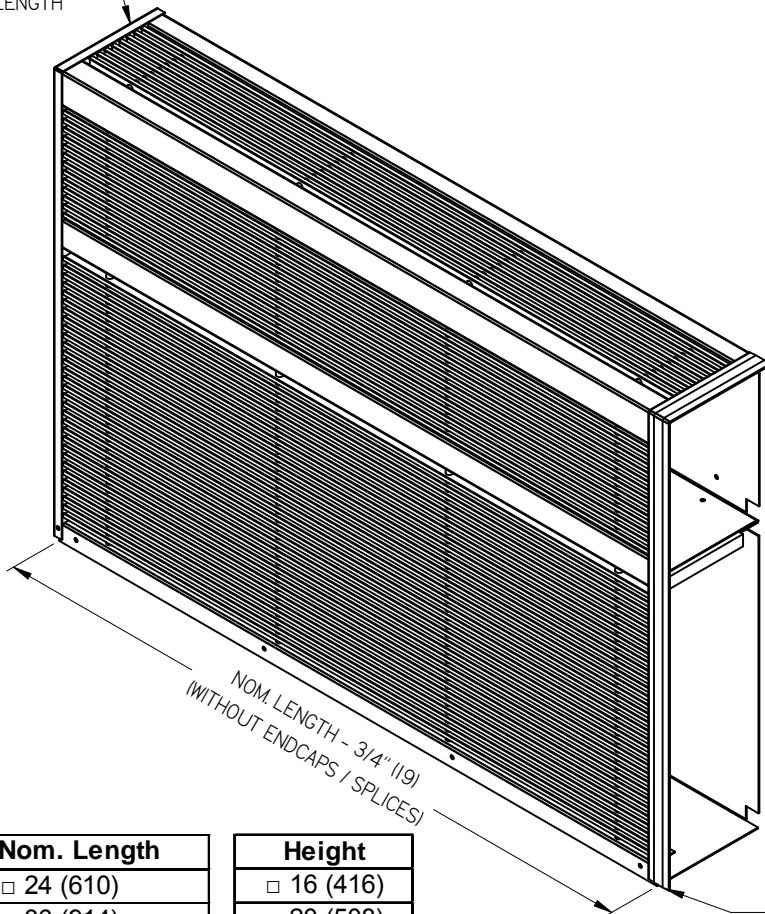
- 25C CORE PATTERN (STANDARD)
- CAN BE CONNECTED TOGETHER FOR CONTINUOUS LOOK
- FACTORY TOLERANCE +/- 1/32" (1)
- ALL UNITS COME WITH INTERNAL BAFFLE

ALL METRIC DIMENSIONS () ARE SOFT CONVERTED. IMPERIAL DIMENSIONS ARE CONVERTED TO METRIC AND ROUNDED TO THE NEAREST MILLIMETER.

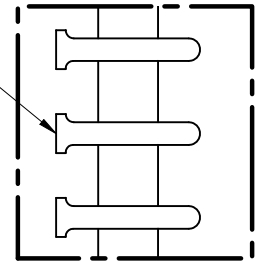
PROJECT:		 DLE LINEAR ENCLOSURE DISPLACEMENT DIFFUSER
ENGINEER:		
CUSTOMER:		
SUBMITTAL DATE:		
SPEC. SYMBOL:		 243588 SEPT 2010

DLE-H DISPLACEMENT LINEAR ENCLOSURE

"Z" ENDCAP
ADDS 1/16" (2)
TO LENGTH



DLE TYPE 25C CORE
PENCIL PROOF
0° DEFLECTION
7/16" (11) SPACING



SPLICE FOR "Y"
END CONDITION

Nom. Length
<input type="checkbox"/> 24 (610)
<input type="checkbox"/> 36 (914)
<input type="checkbox"/> 48 (1219)
<input type="checkbox"/> 60 (1524)

Height
<input type="checkbox"/> 16 (416)
<input type="checkbox"/> 20 (508)
<input type="checkbox"/> 24 (610)

STANDARD CONSTRUCTION:

- MANDRELLED CORE, 0° DEFLECTION
- EXTRUDED ALUMINUM CORE BARS
- STEEL FACE FRAMES
- COATED STEEL BACK PLATE AND DIVIDER
- EXTRUDED ALUMINUM SPLICES, STEEL ENDCAPS

END CONDITIONS:

- ZZ - CLOSED ENDCAPS
- YY - OPEN ENDS WITH SPLICES
- YZ - ENDCAP AND ONE SPLICE

MOUNTING:

- DUCT LINER PROVIDES MOUNTING POINTS FOR FACE
- HOLES INCLUDED IN BOTTOM OF FACE (SCREWS NOT INCLUDED)
- WALL HOOK INTEGRATED IN TOP OF FACE AND LINER

HYDRONIC FIN TUBE:

- HOT WATER ELEMENT BY OTHERS, MOUNTING BRACKET INCLUDED (CSH)
- HOT WATER ELEMENT INCLUDED (HW)
2 3/4" x 4 1/4" (70x108) FINNS, 3/4" (19) COPPER TUBE. PLUMBING LOCATION FOR FIN TUBE IS = NOM HEIGHT - 4.500" (114).
- 24" (610) LONG ELEMENT PER 24" (610) OR 36" (914) SIZES
- 48" (1219) LONG ELEMENT PER 48" (1219) OR 60" (1524) SIZES

FINISH:

- MILL FINISH BACK PLATE, DIVIDER, INNER PERF. BAFFLE
- B12 WHITE (OPTIONAL FINISHES AVAILABLE)

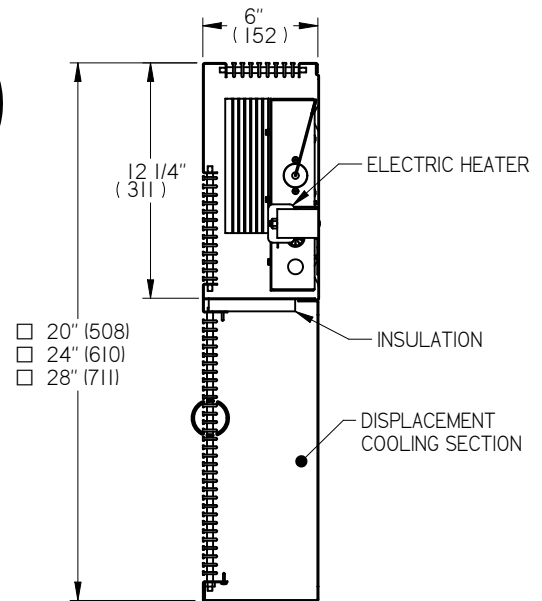
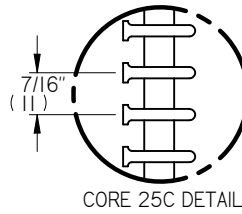
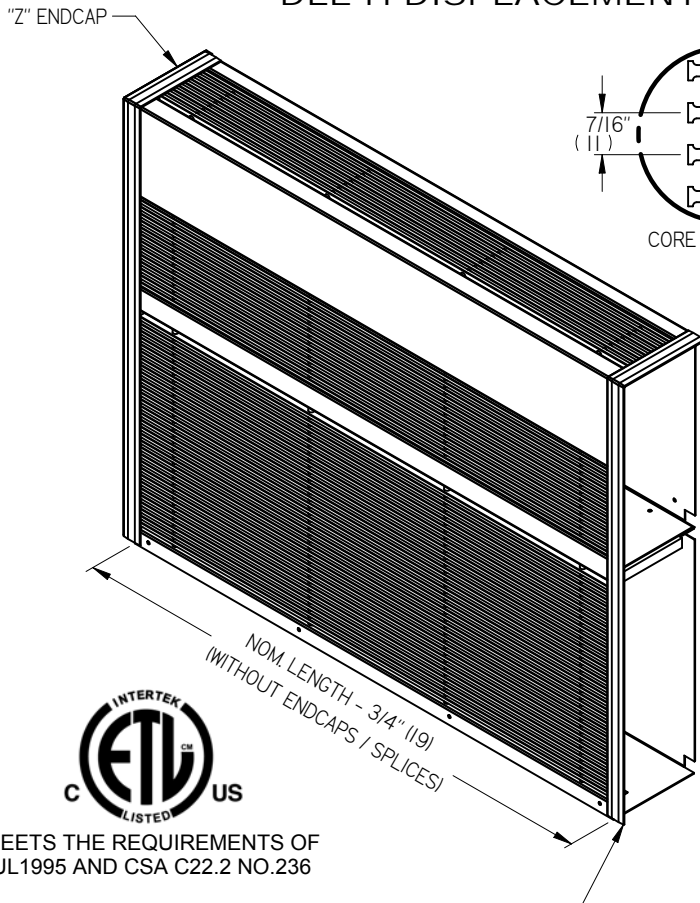
NOTES:

- FACTORY TOLERANCE +/- 1/16" (2) PER SECTION
- UNIT SHIPPED IN PIECES
- NO HARDWARE SHIPPED WITH UNIT
- ALL UNITS COME WITH INTERNAL BAFFLE
- SEE INSTALLATION MANUAL I100004 FOR SINGLE UNIT INSTALL
- SEE INSTALLATION MANUAL I100011 FOR MULTIPLE UNIT INSTALL

ALL METRIC DIMENSIONS () ARE SOFT CONVERTED. IMPERIAL DIMENSIONS ARE CONVERTED TO METRIC AND ROUNDED TO THE NEAREST MILLIMETER.

PROJECT:		price
ENGINEER:		
CUSTOMER:		R
SUBMITTAL DATE:		250210
SPEC. SYMBOL:		SEPT 2010
DLE-H DISPLACEMENT LINEAR ENCLOSURE FOR HYDRONIC HEATING		

DLE-H DISPLACEMENT LINEAR ENCLOSURE



- 20" (508)
- 24" (610)
- 28" (711)



MEETS THE REQUIREMENTS OF
UL1995 AND CSA C22.2 NO.236

Nom. Length	Heater Output		
	120V	208V	240V
<input type="checkbox"/> 30" (762)	500W	375W	500W
<input type="checkbox"/> 36" (914)	500W	375W	500W
<input type="checkbox"/> 48" (1219)	1000W	750W	1000W
<input type="checkbox"/> 60" (1524)	1000W	750W	1000W

STANDARD CONSTRUCTION:

- MANDRELLED CORE, 0° DEFLECTION
- EXTRUDED ALUMINUM CORE BARS
- STEEL FACE FRAMES
- COATED STEEL BACK PLATE AND DIVIDER
- EXTRUDED ALUMINUM SPLICES, STEEL ENDCAPS

END CONDITIONS:

- ZZ - CLOSED ENDCAPS
- YY - OPEN ENDS WITH SPLICES
- YZ - ENDCAP AND ONE SPLICE

MOUNTING:

- DUCT LINER PROVIDES MOUNTING POINTS FOR FACE
- HOLES INCLUDED IN BOTTOM OF FACE (SCREWS NOT INCLUDED)
- WALL HOOK INTEGRATED IN TOP OF FACE AND LINER

FINISH:

- MILL FINISH BACK PLATE, DIVIDER, INNER PERF. BAFFLE
- B12 WHITE FACE (OPTIONAL FINISHES AVAILABLE)

ELECTRIC HEATER:

- FINNED STRIP HEATER
- AVAILABLE VOLTAGES:
 - 120V
 - 208V
 - 240V

CONTROL SYSTEM:

- SCR - SCR WITH 0-10V CONTROL
 - SCRA - SCR WITH 4-20mA CONTROL
 - SCR PWM - SCR WITH PWM CONTROL
 - 1 - BINARY CONTROL, 24VAC MAGNETIC RELAY
 - DRONE
- (NOTE - A MAXIMUM OF 1 DRONE MAY BE CONNECTED TO UNIT WITH SCR / RELAY AT 120V, OR A MAXIMUM OF 3 DRONES AT 208V / 240V)

THERMOSTAT:

- PCT - CONTROLLING THERMOSTAT (N/A TO DRONE UNITS)

NOTES:

- SEE INSTALLATION INSTRUCTION I100014
- FACTORY TOLERANCE +/- 1/16" (2) PER SECTION
- ALL UNITS COME WITH INTERNAL BAFFLE
- SEE INSTALLATION MANUAL I100014

ALL METRIC DIMENSIONS () ARE SOFT CONVERTED. IMPERIAL DIMENSIONS ARE CONVERTED TO METRIC AND ROUNDED TO THE NEAREST MILLIMETER.

PROJECT:		price
ENGINEER:		
CUSTOMER:		RV
SUBMITTAL DATE:		250783
SPEC. SYMBOL:		SEPT 2010
		DLE-H DISPLACEMENT LINEAR ENCLOSURE WITH ELECTRIC HEAT