

**STANDARD MOTOR**

UNIT SIZE	MOTOR H.P.	FULL LOAD AMPS			
		115V	208V	240V	277V
20	1/8	2.7	1.2	1.2	1.0
30	1/4	3.9	2.2	2.2	1.5
40	1/2	5.7	2.5	2.4	2.4

**ECM MOTOR OPTION**

UNIT SIZE	MOTOR H.P.	FULL LOAD AMPS		
		115V	240V	277V
10	1/3	1.4	0.7	0.6
20	1/2	2.7	1.3	1.1
30	1/2	5.5	2.2	2.2
40	1/2	6.4	2.8	2.8

**IMPERIAL UNITS (inches)**

UNIT SIZE	MAXIMUM FAN CFM	PRIMARY AIR		RETURN AIR INLET			L	W	H	OUTLET DUCT SIZE					
		INLET A		B	C	W/OUT WATER COIL				WITH WATER COIL					
		D	E	F	D	E				F					
10	400	5,6		14	8	41	21	10 1/2	12	10	1 1/2	12	10	1 1/2	
20	600	6,8		14	8	41	21	10 1/2	12	10	1 1/2	12	10	1 1/2	
30	1000	8,10		18	8	41	21	10 1/2	12	10	1 1/2	21	10	0	
40	1450	10,12		14	10 1/2	41	21	12 1/2	14	12 1/2	1 1/2	21	12 1/2	0	

**SI UNITS (mm)**

UNIT SIZE	MAXIMUM FAN L/S	PRIMARY AIR		RETURN AIR INLET			L	W	H	OUTLET DUCT SIZE					
		INLET A		B	C	W/OUT WATER COIL				WITH WATER COIL					
		D	E	F	D	E				F					
10	189	127,152		356	203	1041	533	267	305	254	38	305	254	38	
20	283	152,203		356	203	1041	533	267	305	254	38	305	254	38	
30	471	203,254		457	203	1041	533	267	305	254	38	533	254	0	
40	684	254,305		356	267	1041	533	318	356	318	38	533	318	0	

**NOTES:**

- 22GA. ZINC COATED STEEL HOUSING MECHANICALLY SEALED LEAK RESISTANT CONSTRUCTION.
- INTERNAL INSULATION – FIBERGLASS 1/2" (13mm) THICK, MIN. 1.5# DENSITY WHICH MEETS REQUIREMENTS OF NFPA 90A AND UL181.
- UNITS NOT TO BE USED FOR TEMPORARY HEAT OR VENTILATION DURING CONSTRUCTION.
- UNITS MUST HAVE MINIMUM 0.1" w.g. (25Pa) EXTERNAL STATIC PRESSURE TO OPERATE.
- REFER TO SUBMITTED BOX SCHEDULE FOR AIR VOLUMES & INLET SIZES.
- ELECTRIC MOTOR , 1 PHASE, 60 CYCLE
- ALL CONTROL COMPONENTS UTILIZE 20 PSI (138 KPa) CLEAN DRY AIR.
- CONTROLS MOUNTED ON LEFT HAND SIDE OF UNIT AS ILLUSTRATED.
- LISTED UL1995 & CSA236 ASSEMBLY.

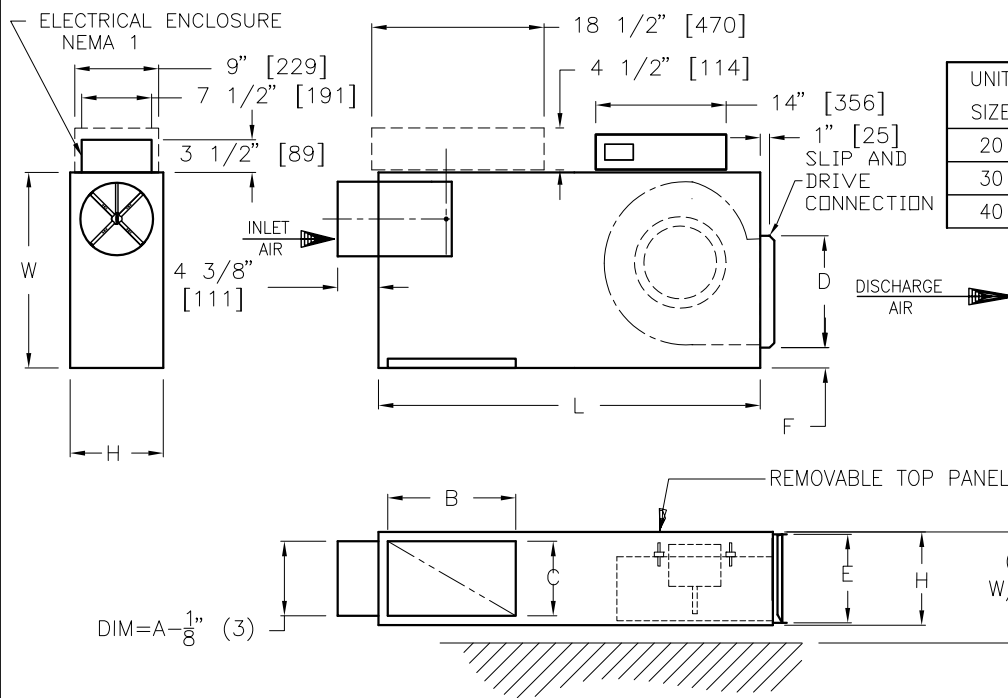
**OPTIONS:**

- DISCONNECT SWITCH
- PROTECTIVE SHROUD
- SUPPORT BRACKETS (\*)
- ECM MOTOR
- FILTER
- FB (FOIL LINED INSULATION)
- FF50 (FIBER FREE INSULATION 1/2")

ALL METRIC DIMENSIONS ( ) ARE SOFT CONVERTED. IMPERIAL DIMENSIONS ARE CONVERTED TO METRIC AND ROUNDED TO THE NEAREST MILLIMETER.



<b>PROJECT:</b>		<b>PRICE</b> <sup>®</sup>	
<b>ENGINEER:</b>		BG	<b>FPCU8000</b> FAN POWERED TERMINAL CONSTANT VOLUME UNDERFLOOR PNEUMATIC SIZE 10 – 40
<b>CUSTOMER:</b>		237296	
<b>SUBMITTAL DATE:</b>	<b>SPEC. SYMBOL:</b>	2011/01/11	



### STANDARD MOTOR

UNIT SIZE	MOTOR H.P.	FULL LOAD AMPS			
		115V	208V	240V	277V
20	1/8	2.7	1.2	1.2	1.0
30	1/4	3.9	2.2	2.2	1.5
40	1/2	5.7	2.5	2.4	2.4

### ECM MOTOR OPTION

UNIT SIZE	MOTOR H.P.	FULL LOAD AMPS		
		115V	240V	277V
10	1/3	1.4	0.7	0.6
20	1/2	2.7	1.3	1.1
30	1/2	5.5	2.2	2.2
40	1/2	6.4	2.8	2.8

### IMPERIAL UNITS (Inches)

UNIT SIZE	MAXIMUM FAN CFM	PRIMARY AIR		RETURN AIR INLET		L	W	H	OUTLET DUCT SIZE					
		INLET A	B	C	W/OUT WATER COIL				WITH WATER COIL					
					D				E	F	D	E	F	
10	400	5,6	14	8	41	21	10 1/2	12	10	1 1/2	12	10	1 1/2	
20	600	6,8	14	8	41	21	10 1/2	12	10	1 1/2	12	10	1 1/2	
30	1000	8,10	18	8	41	21	10 1/2	12	10	1 1/2	21	10	0	
40	1450	10,12	14	10 1/2	41	21	12 1/2	14	12 1/2	1 1/2	21	12 1/2	0	

### SI UNITS (mm)

UNIT SIZE	MAXIMUM FAN L/S	PRIMARY AIR		RETURN AIR INLET		L	W	H	OUTLET DUCT SIZE					
		INLET A	B	C	W/OUT WATER COIL				WITH WATER COIL					
					D				E	F	D	E	F	
10	189	127,152	356	203	1041	533	267	305	254	38	305	254	38	
20	283	152,203	356	203	1041	533	267	305	254	38	305	254	38	
30	471	203,254	457	203	1041	533	267	305	254	38	533	254	0	
40	684	254,305	356	267	1041	533	318	356	318	38	533	318	0	

### NOTES:

- 22GA. ZINC COATED STEEL HOUSING MECHANICALLY SEALED LEAK RESISTANT CONSTRUCTION.
- INTERNAL INSULATION – FIBERGLASS 1/2" (13mm) THICK, MIN. 1.5# DENSITY WHICH MEETS REQUIREMENTS OF NFPA 90A AND UL181.
- UNITS NOT TO BE USED FOR TEMPORARY HEAT OR VENTILATION DURING CONSTRUCTION.
- UNITS MUST HAVE MINIMUM 0.1" w.g. (25Pa) EXTERNAL STATIC PRESSURE TO OPERATE.
- REFER TO SUBMITTED BOX SCHEDULE FOR AIR VOLUMES & INLET SIZES.
- ELECTRIC MOTOR, 1 PHASE, 60 CYCLE
- DIGITAL CONTROLS BY OTHERS
- CONTROLS MOUNTED ON LEFT HAND SIDE OF UNIT AS ILLUSTRATED.
- LISTED UL1995 & CSA236 ASSEMBLY.



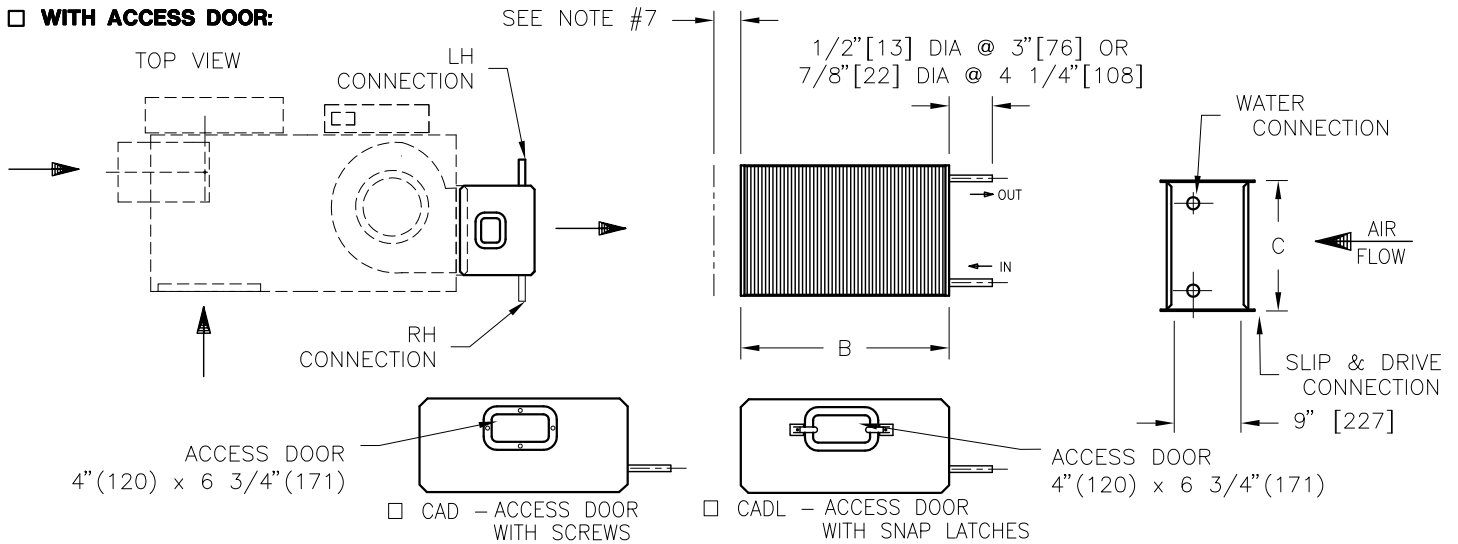
### OPTIONS:

- DISCONNECT SWITCH
- CONTROLS ENCLOSURE
- SUPPORT BRACKETS (\*)
- ECM MOTOR
- FILTER
- FB (FOIL LINED INSULATION)
- FF50 (FIBER FREE INSULATION 1/2")

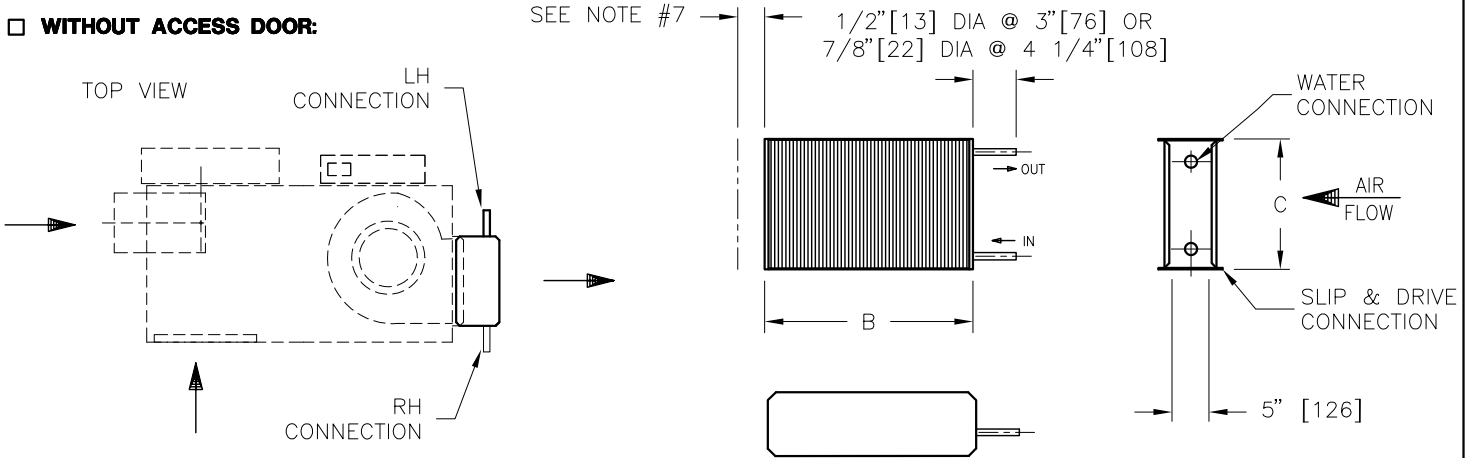
ALL METRIC DIMENSIONS ( ) ARE SOFT CONVERTED. IMPERIAL DIMENSIONS ARE CONVERTED TO METRIC AND ROUNDED TO THE NEAREST MILLIMETER.

<b>PROJECT:</b>		<h1>PRICE®</h1>	
<b>ENGINEER:</b>			
<b>CUSTOMER:</b>		<b>FDCU5000</b> FAN POWERED TERMINAL CONSTANT VOLUME UNDERFLOOR DIGITAL, SIZE 10 – 40	
<b>SUBMITTAL DATE:</b>			
<b>SPEC. SYMBOL:</b>		2011/01/11	

**WITH ACCESS DOOR:**



**WITHOUT ACCESS DOOR:**



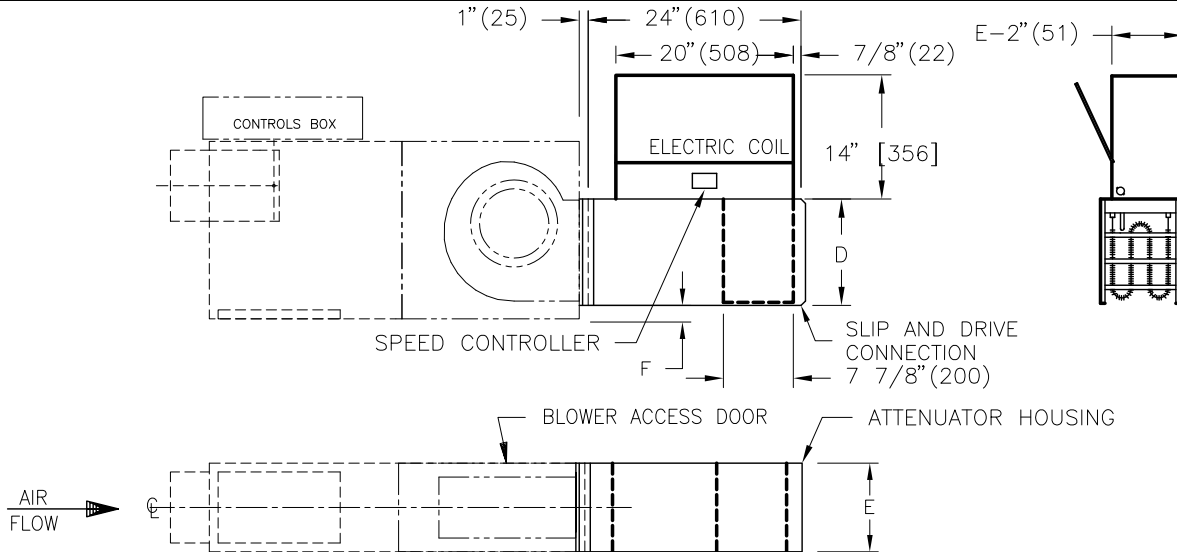
UNIT SIZE	IMPERIAL UNITS (inches)			
	B	C	CONNECTION SIZES	
			1 ROW	2 ROW
10,20	12	10 <sup>3</sup> / <sub>16</sub>	1/2	7/8
30	21	10 <sup>3</sup> / <sub>16</sub>	1/2	7/8
40	21	12 <sup>3</sup> / <sub>4</sub>	7/8	7/8

UNIT SIZE	SI UNITS (mm)			
	B	C	CONNECTION SIZES	
			1 ROW	2 ROW
10,20	305	259	13	22
30	533	259	13	22
40	533	324	22	22

**NOTES:**

- FABRICATED FROM 22 GA. GALVANIZED STEEL. MECHANICALLY SEALED, LEAK RESISTANT CONSTRUCTION.
  - HOT WATER COILS HAVE COPPER TUBES AND ALUMINUM FINS WITH O.D. SWEAT CONNECTIONS.
  - REFER TO SUBMITTED TERMINAL UNIT SCHEDULE FOR AIR VOLUMES AND HOT WATER COIL CAPACITIES.
  - METHOD OF VENTING HOT WATER COIL IS TO BE PROVIDED BY INSTALLING CONTRACTOR
  - SLIP & DRIVE FLANGED ADAPTOR REQUIRED TO ATTACH HOT WATER COILS TO FANS.
  - HAND OF HOT WATER COIL CONNECTIONS IS DETERMINED WHEN VIEWED FROM AIR INLET SIDE.
  - ALLOW 1 1/2" (38) MINIMUM CLEARANCE FOR INSTALLATION AT THIS END.
  - PERFORMANCE RATED AND CERTIFIED IN ACCORDANCE WITH THE CURRENT EDITION OF ARI STANDARD 410.
- ALL METRIC DIMENSIONS ( ) ARE SOFT CONVERTED. IMPERIAL DIMENSIONS ARE CONVERTED TO METRIC AND ROUNDED TO THE NEAREST MILLIMETER.

<b>PROJECT:</b>		<b>PRICE®</b>	
<b>ENGINEER:</b>		<b>BG</b>	<b>HOT WATER COILS</b> FAN POWERED TERMINALS CONSTANT VOLUME UNDERFLOOR FPCU, FDCU
<b>CUSTOMER:</b>		237299	
<b>SUBMITTAL DATE:</b>	<b>SPEC. SYMBOL:</b>	2011/07/27	



**IMPERIAL UNITS (inches)**

UNIT SIZE	OUTLET DUCT SIZE		F
	D	E	
10,20	12	10	1½
30	12	10	1½
40	14	12½	1½

**SI UNITS (mm)**

UNIT SIZE	OUTLET DUCT SIZE		F
	D	E	
10,20	305	254	38
30	305	254	38
40	356	318	38

SEE CATALOGUE FOR DETAILED AIR FLOW RANGES AND HEATING CAPACITIES.

**NOTES:**

- ATTENUATOR INSULATION – FIBERGLASS ½" (13mm) THICK, MIN. 1.5# DENSITY WHICH MEETS REQUIREMENTS OF NFPA 90A AND UL181.
- 22GA. ZINC COATED STEEL ATTENUATOR. 20GA. ZINC COATED STEEL HEATER. MECHANICALLY SEALED LEAK RESISTANT CONSTRUCTION.
- UNITS NOT TO BE USED FOR TEMPORARY HEAT OR VENTILATION DURING CONSTRUCTION.
- REFER TO SUBMITTED CONTROL DIAGRAMS FOR STANDARD CONTROLS COMPONENTS TO BE SUPPLIED.
- 70 CFM PER KW MINIMUM AIR FLOW ACROSS HEATER COILS.
- MINIMUM 0.2" w.g.(50 Pa) EXTERNAL STATIC PRESSURE TO OPERATE.
- SEE OTHER SUBMITTALS FOR ACCESSORY OPTIONS.
- LEFT HAND UNIT IS ILLUSTRATED.
- LISTED UL1995 AND CSA236 ASSEMBLY.
- FOR SCR OPTION WITH PNEUMATIC CONTROL SIGNAL CONTACT PRICE.

**STANDARD HEATER FEATURES**

- HINGED SIDE ACCESS DOOR
- AUTOMATIC RESET THERMAL CUTOUT
- MANUAL RESET THERMAL CUTOUT
- FAN INTERLOCKED WITH HEATING ELEMENTS
- MAGNETIC CONTACTORS WHERE REQUIRED
- HIGH GRADE NICKEL CHROME HEATING ELEMENTS
- SINGLE POINT ELECTRICAL CONNECTION. EXCEPT SEPARATE POWER SUPPLY FOR 600V 3ø.

**SUPPLY VOLTAGE:**

- 120V/1ø       277V/1ø       600V/3ø (3 OR 4 WIRE)
- 208V/1ø (3 WIRE)       208V/3ø (4 WIRE)
- 240V/1ø       480V/3ø (4 WIRE)

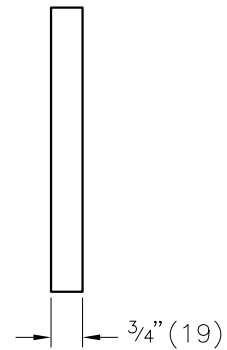
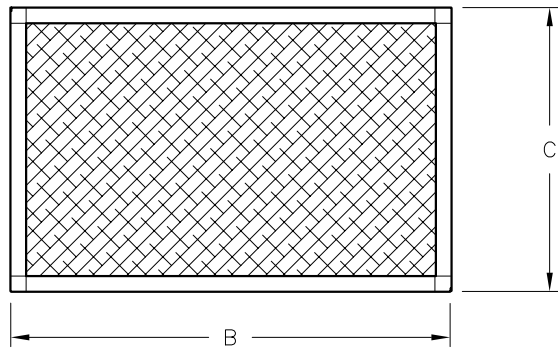
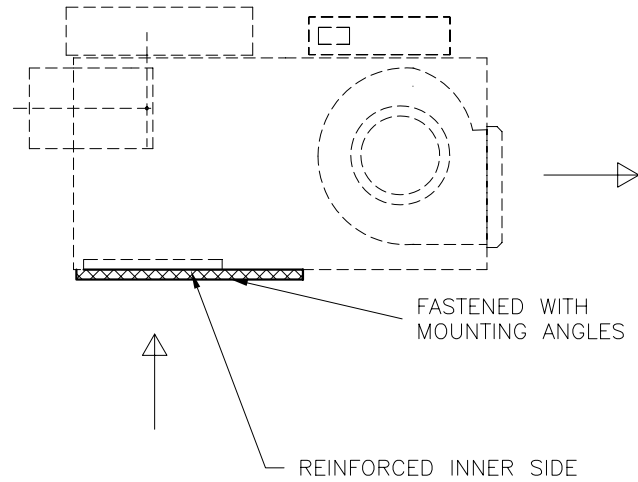
**OPTIONAL FEATURES**

- CHICAGO CONSTRUCTION (CBC2000)
- DOOR INTERLOCK DISCONNECT SWITCH
- SCR CONTROLS       SCR -DAT CONTROLS \*SEE NOTE
  - 0 to 10 Vdc CONTROL SIGNAL       4 to 20 mA CONTROL SIGNAL
- MAIN SUPPLY FUSES
- CONTROL CIRCUIT FUSE
- MOTOR FUSE
- MERCURY CONTACTORS
- PSG – Price Silent Guard™ CONTROLLER
- DP – DUAL POINT POWER CONNECTION



ALL METRIC DIMENSIONS ( ) ARE SOFT CONVERTED. IMPERIAL DIMENSIONS ARE CONVERTED TO METRIC AND ROUNDED TO THE NEAREST MILLIMETER.

<b>PROJECT:</b>		<b>PRICE®</b>	
<b>ENGINEER:</b>		<b>BG</b>	<b>ELECTRIC COILS</b> FAN POWERED TERMINALS UNDERFLOOR FPCU/FDCU/FECU
<b>CUSTOMER:</b>		237300	
<b>SUBMITTAL DATE:</b>	<b>SPEC. SYMBOL:</b>	2011/01/21	



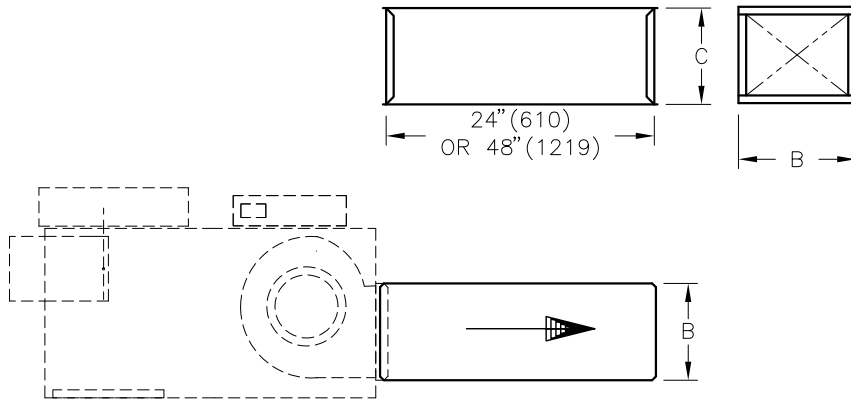
- FILTER 1" (25) FILTER MEDIA.
- CARDBOARD FRAME.

SIZE	IMPERIAL UNITS		S.I. UNITS	
	B	C	B	C
10,20	20 <sup>7</sup> / <sub>8</sub>	9 <sup>3</sup> / <sub>4</sub>	530	248
30	20 <sup>7</sup> / <sub>8</sub>	9 <sup>3</sup> / <sub>4</sub>	530	248
40	15 <sup>1</sup> / <sub>2</sub>	12 <sup>3</sup> / <sub>8</sub>	403	314

ALL METRIC DIMENSIONS ( ) ARE SOFT CONVERTED. IMPERIAL DIMENSIONS ARE CONVERTED TO METRIC AND ROUNDED TO THE NEAREST MILLIMETER.

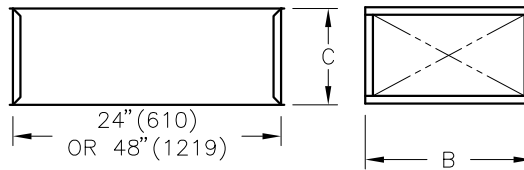
<b>PROJECT:</b>		<b>PRICE</b> <sup>®</sup>	
<b>ENGINEER:</b>		<i>fk</i>	<b>FILTERS</b> FAN POWERED TERMINALS CONSTANT VOLUME UNDERFLOOR FPCU, FDCU, FECU
<b>CUSTOMER:</b>			
<b>SUBMITTAL DATE:</b>	<b>SPEC. SYMBOL:</b>	OCT 2005	

**DISCHARGE ATTENUATOR SECTION (DAS-2FT or DAS4-4FT)**

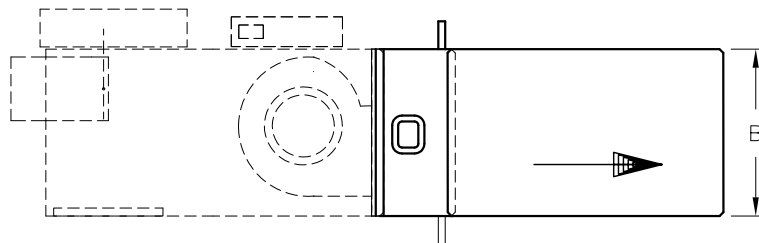


**WITHOUT WATER COILS**

SIZE	IMPERIAL UNITS		S.I. UNITS	
	B	C	B	C
10,20	12	10	305	254
30	12	10	305	254
40	14	12½	356	318



**WITH WATER COILS**



SIZE	IMPERIAL UNITS		S.I. UNITS	
	B	C	B	C
10,20	12	10	305	254
30	21	10	533	254
40	21	12½	533	318

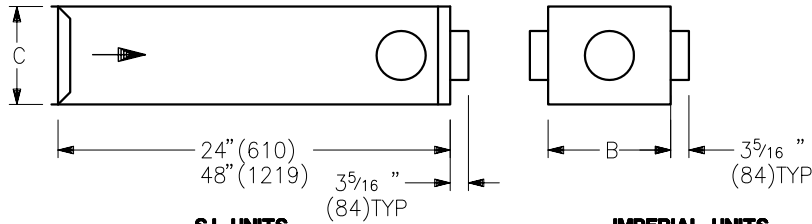
- 22GA. GALVANIZED STEEL HOUSING, MECHANICALLY SEALED, LEAK RESISTANT CONSTRUCTION.
- INTERNAL INSULATION – FIBERGLASS 1/2" (13) THICK, MIN. 1.5# DENSITY WHICH MEETS REQUIREMENTS OF NFPA 90A AND UL181.
- SLIP AND DRIVE CONNECTION ENDS AS SHOWN.

**OPTIONS:** LINERS:  FB (FOIL LINED INSULATION)  FF50 (FIBER FREE INSULATION 1/2")

ALL METRIC DIMENSIONS ( ) ARE SOFT CONVERTED. IMPERIAL DIMENSIONS ARE CONVERTED TO METRIC AND ROUNDED TO THE NEAREST MILLIMETER.

<b>PROJECT:</b>		<b>PRICE</b> <sup>®</sup>	
<b>ENGINEER:</b>		<b>BG</b>	<b>ATTENUATORS</b> FAN POWERED TERMINALS CONSTANT VOLUME UNDERFLOOR FPCU, FDCU, FECU
<b>CUSTOMER:</b>		237310	
<b>SUBMITTAL DATE:</b>	<b>SPEC. SYMBOL:</b>	OCT 08	

**MULTI-OUTLET ATTENUATOR SECTION  
(MOA - 2 FT. or MOA4 - 4 FT.)**



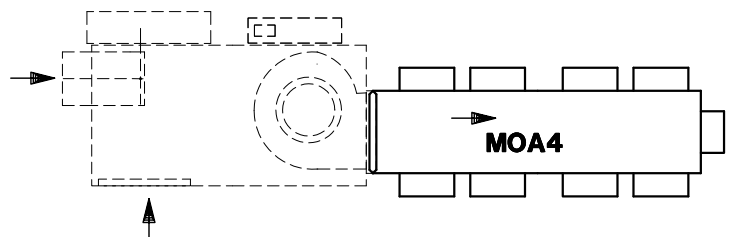
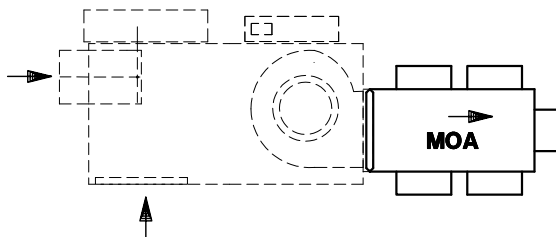
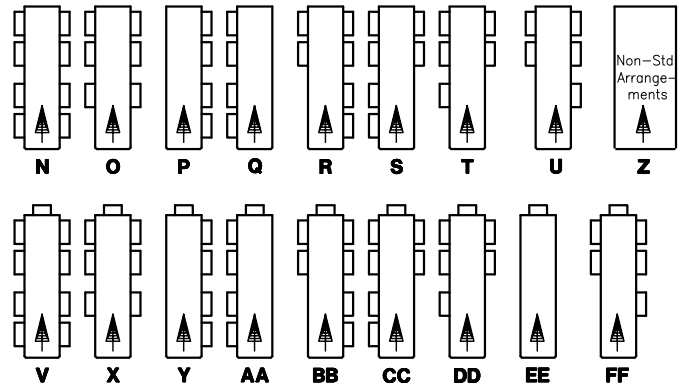
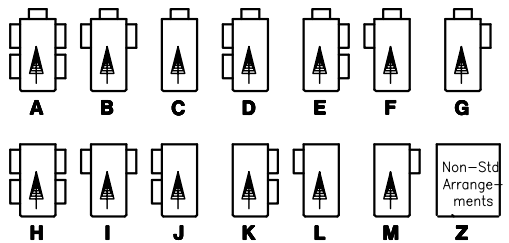
UNIT SIZE	S.I. UNITS		AVAILABLE OUTLETS	IMPERIAL UNITS		AVAILABLE OUTLETS
	B	C		B	C	
10,20	305	254	102,127,152,203	12	10	4,5,6,8
30	305	254	102,127,152,203	12	10	4,5,6,8
40	356	318	102,127,152,203,229,254	14	12 1/2	4,5,6,8,9,10

**NOTES:**

- ONLY ONE OUTLET SIZE TO BE SPECIFIED PER M.O.A.. NO MIXING OF OUTLET SIZES ON THE SAME UNIT.
- ALL ROUND OUTLETS C/W MANUAL DAMPERS.
- DENOTES AIR FLOW DIRECTION.
- FOR SPECIAL OUTLET SIZES & ARRANGEMENTS, CONSULT YOUR PRICE SALES REPRESENTATIVE.
- 22GA. GALVANIZED STEEL HOUSING, MECHANICALLY SEALED, LEAK RESISTANT CONSTRUCTION.
- INTERNAL INSULATION - FIBERGLASS 1/2" (13)THICK, MIN. 1.5# DENSITY WHICH MEETS REQUIREMENTS OF NFPA 90A AND UL181.
- SLIP AND DRIVE CONNECTION ENDS AS SHOWN.
- SHIPPED LOOSE

**OPTIONS:**    FF50    FB

**STANDARD OUTLET ARRANGEMENTS**



ALL METRIC DIMENSIONS ( ) ARE SOFT CONVERTED. IMPERIAL DIMENSIONS ARE CONVERTED TO METRIC AND ROUNDED TO THE NEAREST MILLIMETER.

<b>PROJECT:</b>		<b>PRICE</b> <sup>®</sup>	
<b>ENGINEER:</b>		<b>BG</b>	<b>MOA</b> FAN POWERED TERMINALS CONSTANT VOLUME UNDERFLOOR FPCU, FDCU, FEBU
<b>CUSTOMER:</b>		237311	
<b>SUBMITTAL DATE:</b>	<b>SPEC. SYMBOL:</b>	OCT 08	