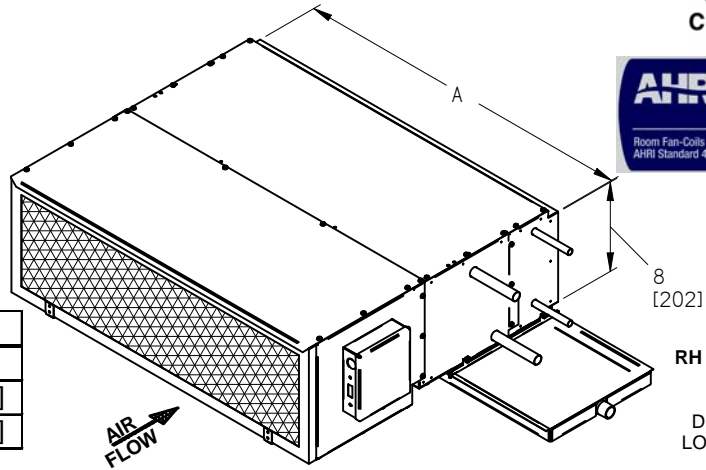


SIZE	NOMINAL		A in. (mm)	B in. (mm)	# OF BLOWERS	MOTORS (HP)	TOTAL AMPS		
	CFM	l/s					115V	208/240V	277V
02	200	94	16.0 (406)	28.1 (714)	1	1/30	0.7	0.5	0.5
03	300	142	25.0 (635)	37.4 (950)	1	1/30	0.7	0.5	0.5
06	600	283	30.0 (762)	42.1 (1069)	2	1/10	1.8	0.7	0.64
08	800	378	40.0 (1016)	52.1 (1323)	2	1/10	1.8	0.7	0.64
10	1000	472	50.0 (1270)	62.1 (1577)	3	1/10, 1/30	2.5	1.2	1.14
12	1200	566	60.0 (1524)	71.8 (1824)	4	1/10, 1/10	3.28	1.4	1.28

NOTE:
TOTAL UNIT AMPS SHOWN
ARE BASED ON MOTOR
SPECIFICATIONS. ACTUAL
PERFORMANCE WILL VARY
WITH THE APPLICATION



PIPE SYSTEM	C in.(mm)	D in.(mm)	E in.(mm)
1 OR 2 ROW 2 PIPE	16.2 (412)	20 (508)	24.6 (625)
3 OR 4 ROW 2 PIPE	21.2 (539)	25 (635)	29.6(752)
4 PIPE	24.8 (630)	28.6 (726)	33.2 (843)



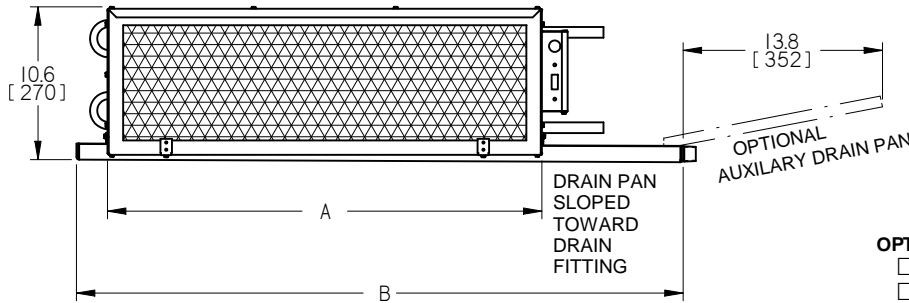
8
[202]

**RH CONFIGURATION
SHOWN
HANDING
DETERMINED BY
LOOKING AT INLET**

COIL CONNECTION SIZES

	1 Row	2 Rows	3 Rows	4 Rows
O.D.	5/8" [16]	5/8" [16]	7/8" [22]	7/8" [22]
Nom.	1/2" [13]	1/2" [13]	3/4" [19]	3/4" [19]

O.D. = Outside Dimeter
Nom. = Nominal Pipe Size

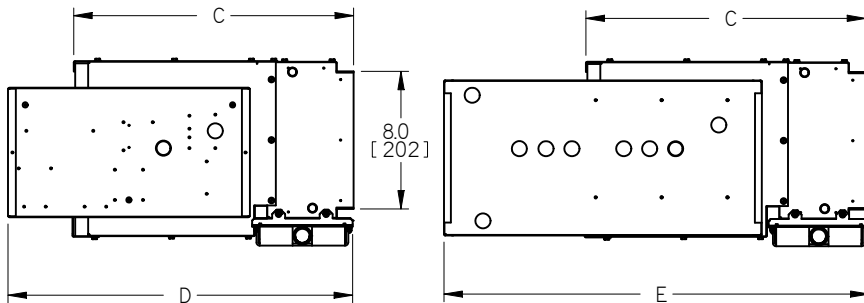


STANDARD CONSTRUCTION:

- 20ga. GALVANIZED STEEL CASING
- GALVANIZED HARDWARE
- COOLING COIL EQUIPPED WITH GALVANIZED STEEL DRAIN PAN EXTERNALLY INSULATED WITH FOAM
- 3/4" NPT DRAIN CONNECTION
- PSC ELECTRIC MOTORS WITH 3 SPEEDS
- COILS - 1/2" O.D. COPPER TUBES, ALUMINUM SINE WAVE FINS
- 1" THICK THROWAWAY FILTER WITH FIBERGLASS MESH MEDIA
- INTERNAL INSULATION - FIBERGLASS 1/2" (13mm) THICK

OPTIONS:

- STAINLESS STEEL INSULATED DRAIN PAN
 - SECONDARY DRAIN
 - DISCONNECT SWITCH
 - MOTOR FUSE
 - 115V 50-60Hz/1PH MOTOR WITH 3 SPEED
 - 208-240V/50-60Hz/1PH MOTOR WITH 3 SPEED
 - 277V/60Hz/1PH MOTOR WITH 3 SPEED
 - HANGER BRACKETS
 - THERMOSTAT - SHIPPED LOOSE
 - FF50 (FIBERFREE), LINER 1/2" THICK
 - FB FOIL FACED FIBERGLASS LINER 5/8" THICK
 - AUXILIARY DRAIN PAN
- 2 PIPE SYSTEM**
- 1 - ROW 2 - ROW 3 - ROW 4 - ROW
- 4 PIPE SYSTEM**
- W/ PREHEAT (HEATING/COOLING)
- 1/3 - ROW 2/3 - ROW 1/4 - ROW 2/4 - ROW
- W/ REHEAT (COOLING/HEATING)
- 3/1 - ROW 3/2 - ROW 4/1 - ROW 4/2 - ROW



INTERMEDIATE CONTROLS ENCLOSURE

DELUXE CONTROLS ENCLOSURE

ALL METRIC DIMENSIONS () ARE SOFT CONVERTED. IMPERIAL DIMENSIONS ARE CONVERTED TO METRIC AND ROUNDED TO THE NEAREST MILLIMETER.

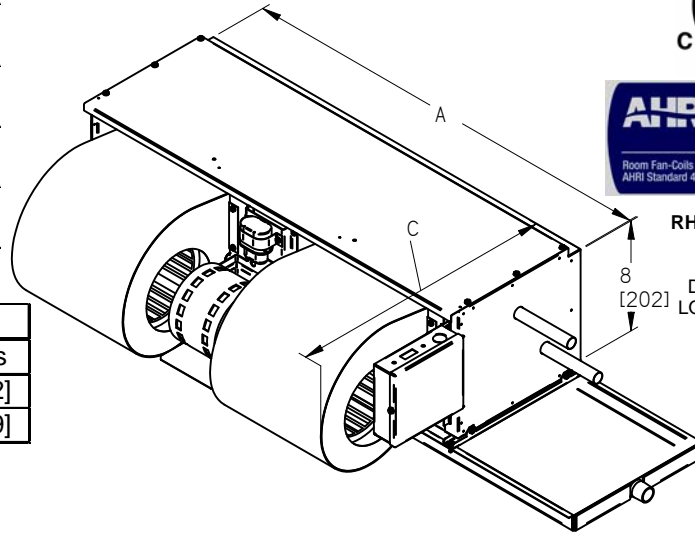
PROJECT:	 FC - H - C - P HORIZONTAL CONCEALED WITH PLENUM SIZE 02-12	
ENGINEER:		
CUSTOMER:		
SUBMITTAL DATE:		

SIZE	NOMINAL		A in. (mm)	B in. (mm)	# OF BLOWERS	MOTORS (HP)	TOTAL AMPS		
	CFM	l/s					115V	208/240V	277V
02	200	94	16.0 (406)	28.1 (714)	1	1/30	0.7	0.5	0.5
03	300	142	25.0 (635)	37.4 (950)	1	1/30	0.7	0.5	0.5
06	600	283	30.0 (762)	42.1 (1069)	2	1/10	1.8	0.7	0.64
08	800	378	40.0 (1016)	52.1 (1323)	2	1/10	1.8	0.7	0.64
10	1000	472	50.0 (1270)	62.1 (1577)	3	1/10, 1/30	2.5	1.2	1.14
12	1200	566	60.0 (1524)	71.8 (1824)	4	1/10, 1/10	3.28	1.4	1.28

NOTE:
TOTAL UNIT AMPS SHOWN
ARE BASED ON MOTOR
SPECIFICATIONS. ACTUAL
PERFORMANCE WILL
VARY WITH THE
APPLICATION



PIPE SYSTEM	C in.(mm)	D in.(mm)	E in.(mm)
1 OR 2 ROW 2 PIPE	13.9 (353)	20 (508)	24.4 (620)
3 OR 4 ROW 2 PIPE	18.9 (480)	25 (635)	29.4 (747)
4 PIPE	22.5 (571)	28.6 (726)	33 (838)

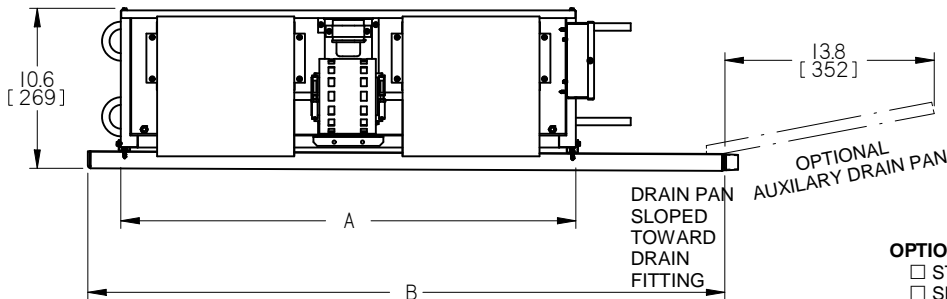


RH CONFIGURATION
SHOWN
HANDING
DETERMINED BY
LOOKING AT INLET

COIL CONNECTION SIZES

	1 Row	2 Rows	3 Rows	4 Rows
O.D.	5/8" [16]	5/8" [16]	7/8" [22]	7/8" [22]
Nom.	1/2" [13]	1/2" [13]	3/4" [19]	3/4" [19]

O.D. = Outside Diameter
Nom. = Nominal Pipe Size

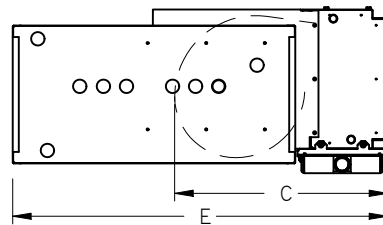
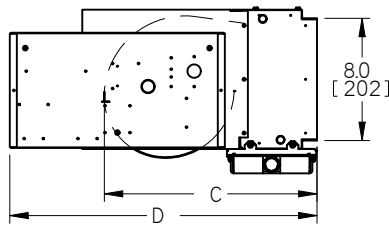


STANDARD CONSTRUCTION:

- 20ga. GALVANIZED STEEL CASING
- GALVANIZED HARDWARE
- COOLING COIL EQUIPPED WITH GALVANIZED STEEL DRAIN PAN EXTERNALLY INSULATED WITH FOAM
- 3/4" NPT DRAIN CONNECTION
- PSC ELECTRIC MOTORS WITH 3 SPEEDS
- COILS - 1/2" O.D. COPPER TUBES, ALUMINUM SINE WAVE FINS

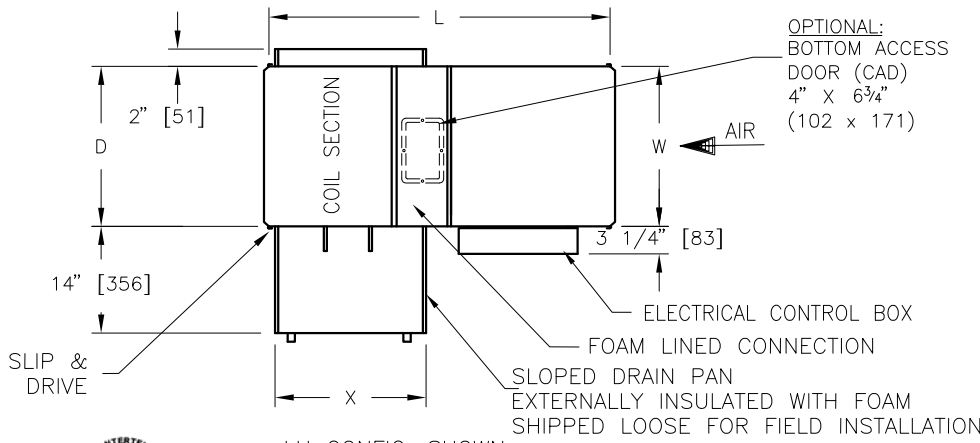
OPTIONS:

- STAINLESS STEEL INSULATED DRAIN PAN
 - SECONDARY DRAIN
 - DISCONNECT SWITCH
 - MOTOR FUSE
 - THERMOSTAT - SHIPPED LOOSE
 - 115V/50-60Hz/1PH MOTOR WITH 3 SPEEDS
 - 208-240V/50-60Hz/1PH MOTOR WITH 3 SPEEDS
 - 277V/60Hz/1PH MOTOR WITH 3 SPEEDS
 - HANGER BRACKETS
 - AUXILIARY DRAIN PAN
- 2 PIPE SYSTEM**
- 1 - ROW 2 - ROW 3 - ROW 4 - ROW
- 4 PIPE SYSTEM**
- W/ PREHEAT (HEATING/COOLING)
- 1/3 - ROW 2/3 - ROW 1/4 - ROW 2/4 - ROW
- W/ REHEAT (COOLING/HEATING)
- 3/1 - ROW 3/2 - ROW 4/1 - ROW 4/2 - ROW



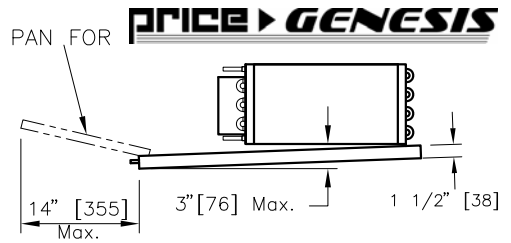
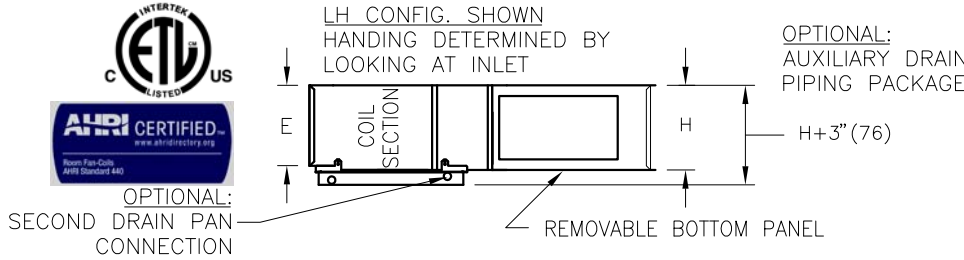
ALL METRIC DIMENSIONS () ARE SOFT CONVERTED. IMPERIAL DIMENSIONS ARE CONVERTED TO METRIC AND ROUNDED TO THE NEAREST MILLIMETER.

PROJECT:	PRICE	
ENGINEER:		
CUSTOMER:	BG	FAN COIL FC - H - C - B
SUBMITTAL DATE:	246798	HORIZONTAL CONCEALED W/OUT PLENUM
SPEC. SYMBOL:	2011/10/31	SIZE 02-12



ECM MOTOR FLA					
UNIT SIZE	MOTOR H.P.	115v	208v	240v	277v
20	1/3	3.25	2.25	1.90	1.29
30	1/2	4.86	3.13	2.54	2.06
40	1/2	5.15	3.21	2.54	2.26
50	1/2 x2	8.72	5.29	4.11	3.47
60	1/2 x2	9.6	5.91	4.64	4.6
70	3/4 x2	19.04	13.33	11.37	7.40

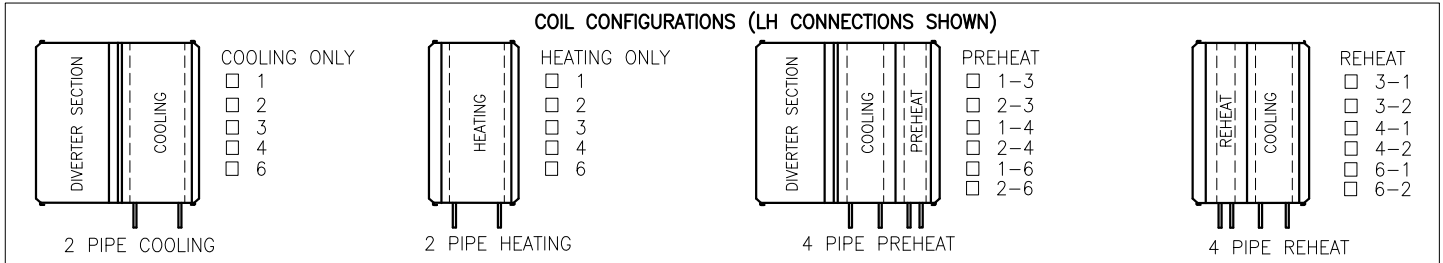
PSC MOTOR FLA					
UNIT SIZE	MOTOR H.P.	115v	208v	240v	277v
20	1/8	1.73	.81	.81	.64
30	1/4	3.22	1.29	1.25	1.37
40	1/2	5.14	2.37	2.27	2.35
50	1/4 x2	5.93	2.58	2.47	2.63
60	1/2 x2	10	4.42	4.3	4.32
70	1/2 x2	13.96	5.80	6.10	5.94



IMPERIAL UNITS (Inches)						SI UNITS (mm)					
UNIT SIZE	# OF BLOWERS	MAX FAN FLOW, CFM	OUTLET DUCT SIZE		W	H	MAX FAN FLOW, L/s	OUTLET DUCT SIZE		W	H
			D	E				D	E		
20	1	500	21	9	21	10 1/2	236	533	229	533	267
30	1	800	21	9	21	10 1/2	377	533	229	533	267
40	1	950	26	11 1/2	26	12 1/2	448	660	292	660	318
50	2	1550	42	9	42	10 1/2	731	1067	229	1067	267
60	2	2050	48	11 1/2	48	12 1/2	968	1219	292	1219	318
70	2	2800	60	11 1/2	60	12 1/2	1321	1524	292	1524	318

IMPERIAL UNITS (Inches)	NUMBER OF ROWS			
	1 & 2	3 & 4	6	
CONNECTION SIZES	20-60	7/8	7/8	1 1/8
	70	7/8	1 1/8	1 1/8

SI UNITS (mm)	NUMBER OF ROWS			
	1 & 2	3 & 4	6	
CONNECTION SIZES	20-60	22	22	29
	70	22	29	29



IMPERIAL UNITS (Inches)		NUMBER OF ROWS											
		COOLING			HEATING			PREHEAT			REHEAT		
		1 & 2	3 & 4	6	1 & 2	3 & 4	6	1-3;2-3;1-4;2-4	1-6, 2-6	1-3;2-3;1-4;2-4	1-6, 2-6		
L	20-40	41 5/8	43 1/8	45 1/8	33 5/8	35 3/8	37 3/8	48 3/8	50 3/8	40 3/8	42 3/8		
	50-60	44 1/8	45 7/8	47 7/8	36 1/8	37 7/8	39 7/8	50 7/8	52 7/8	42 7/8	44 7/8		
	70	47 1/8	48 7/8	50 7/8	39 1/8	40 7/8	42 7/8	53 7/8	55 7/8	45 7/8	47 7/8		
X		14 1/8			N/A (NO DRAIN PAN)			17 7/8			17 7/8		

SI UNITS (mm)		NUMBER OF ROWS											
		COOLING			HEATING			PREHEAT			REHEAT		
		1 & 2	3 & 4	6	1 & 2	3 & 4	6	1-3;2-3;1-4;2-4	1-6, 2-6	1-3;2-3;1-4;2-4	1-6, 2-6		
L	20-40	1057	1095	1146	854	899	949	1229	1280	1026	1076		
	50-60	1121	1165	1216	918	962	1013	1292	1343	1089	1140		
	70	1197	1241	1292	994	1038	1089	1368	1419	1165	1216		
X		359			N/A (NO DRAIN PAN)			452			452		

ALL METRIC DIMENSIONS () ARE SOFT CONVERTED. IMPERIAL DIMENSIONS ARE CONVERTED TO METRIC AND ROUNDED TO THE NEAREST MILLIMETER.

PROJECT:			
ENGINEER:			
CUSTOMER:		BG	FCHG FAN COIL HORIZONTAL HIGH PERFORMANCE GENESIS
SUBMITTAL DATE:		252380	
SPEC. SYMBOL:		2011/10/31	

FAN COIL NOTES:

- INTERNAL INSULATION – FIBERGLASS 1/2" (13mm) THICK, MIN. 1.5# DENSITY WHICH MEETS THE REQUIREMENTS OF NFPA 90A AND UL181
- 20 GAUGE ZINC COATED STEEL HOUSING
- ELECTRIC MOTOR 1 PHASE, 60 CYCLE, ECM STYLE
- ETL LISTED TO MEET UL1995 & CSA236
- BOTTOM BLOWER ACCESS PANEL.
- LEFT HAND CONTROLS CONFIGURATION IS SHOWN, RIGHT HAND IS ALSO AVAILABLE.
- DISCHARGE DESIGNED FOR SLIP & DRIVE CLEAT DUCT CONNECTIONS.

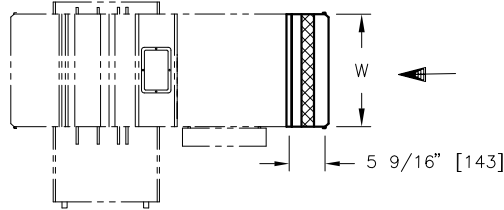
WATER COIL NOTES:

- FABRICATED FROM 22 GA. GALVANIZED STEEL. MECHANICALLY SEALED, LEAK RESISTANT CONSTRUCTION.
- ALUMINUM FINS AND COPPER TUBES WITH O.D. SWEAT CONNECTIONS.
- MANUAL AIRVENTS INCLUDED.
- HAND OF WATER COIL CONNECTIONS IS DETERMINED WHEN VIEWED FROM AIR INLET SIDE, LH SHOWN.
- COIL PERFORMANCE RATED AND CERTIFIED IN ACCORDANCE WITH THE CURRENT EDITION OF AHRI STANDARD 410.
- COOLING COIL INCLUDES SLOPED, GALVANIZED, STEEL DRAIN PAN EXTERNALLY INSULATED WITH FOAM AND 3/4"(19) MALE NPT CONNECTION.
- COOLING COIL BOTTOM PANEL IS SLOPED TO ENSURE CONDENSATE REMOVAL.
- SEE PERFORMANCE SCHEDULE FOR FLOW, HEATING/ COOLING CAPACITY/ WATER COIL CONFIGURATION.

OPTIONS:

- | | | |
|--|--|--|
| <input type="checkbox"/> DISCONNECT SWITCH (DSW) | <input type="checkbox"/> AUXILIARY DRAIN PAN | <input type="checkbox"/> COILS ACCESS DOORS (CAD) W/SCREWS |
| <input type="checkbox"/> HANGER BRACKETS (HB), SHIPPED LOOSE | <input type="checkbox"/> STAINLESS STEEL COIL BOTTOM | FAN COIL LINERS: <input type="checkbox"/> SM <input type="checkbox"/> FF50 |
| <input type="checkbox"/> SPRING HANGER BRACKETS (HBS), SHIPPED LOOSE | <input type="checkbox"/> STAINLESS STEEL DRAIN PAN | <input type="checkbox"/> PM <input type="checkbox"/> FB |
| <input type="checkbox"/> MOTOR FUSE | <input type="checkbox"/> SECONDARY DRAIN CONNECTION | INLET SILENCER MEDIA TREATMENT: |
| <input type="checkbox"/> ECM DELUXE SPEED CONTROLLER | <input type="checkbox"/> PSC MOTOR | <input type="checkbox"/> FC – FIBERGLASS CLOTH |
| | | <input type="checkbox"/> PL – POLYMER LINER |

FILTER RACK SECTION



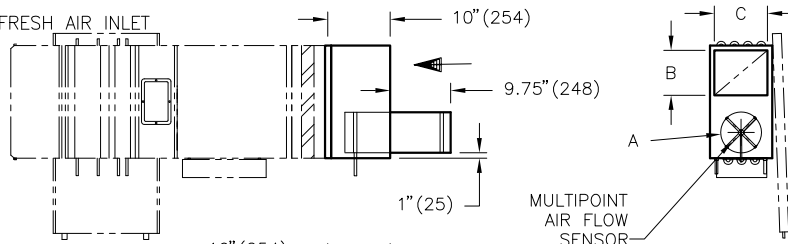
FILTER RACK OPTIONS:

- 2" MERV 8 FILTER
- 2" MERV 13 FILTER

FILTER SIZES:

SIZE	W, in	W, (mm)	H, in	H, (mm)	QTY/Unit
20/30	20 7/8	530	10 1/4	260	1
40	25 7/8	657	12 1/4	311	1
50	20 7/8	530	10 1/4	260	2
60	23 7/8	606	12 1/4	311	2
70	29 7/8	757	12 1/4	311	2

PRIMARY/FRESH AIR INLET



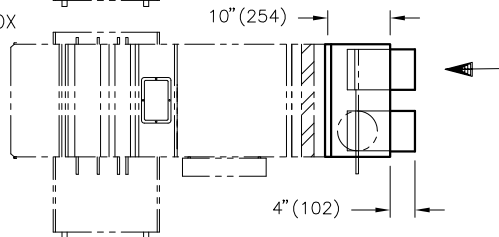
PRIMARY/FRESH AIR INLET

SIZE	A, in	A, mm
20/30/40/50	6", 8"	152, 203
60/70	6", 8", 10"	152, 203, 254

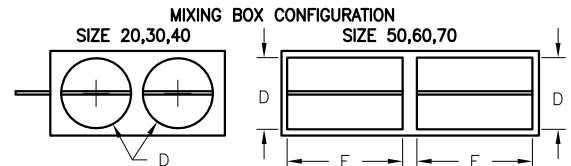
RETURN AIR INLET

SIZE	B, in	B, (mm)	C, in	C, (mm)
20/30	10 1/2	267	9 1/2	241
40	15 1/2	394	11 1/2	292
50	31 1/2	800	9 1/2	251
60	35 1/2	902	11 1/2	292
70	47 1/2	1206	11 1/2	292

MIXING BOX

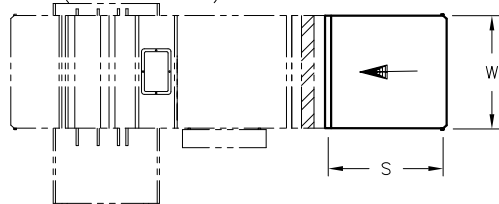


LH CONFIGS. SHOWN
HANDING DETERMINED BY
LOOKING AT INLET



SIZE	D, in	D, mm	E, in	E, mm
20/30	8"	203	-	-
40	10"	254	-	-
50	8"	203	16"	406
60/70	8"	203	21"	533

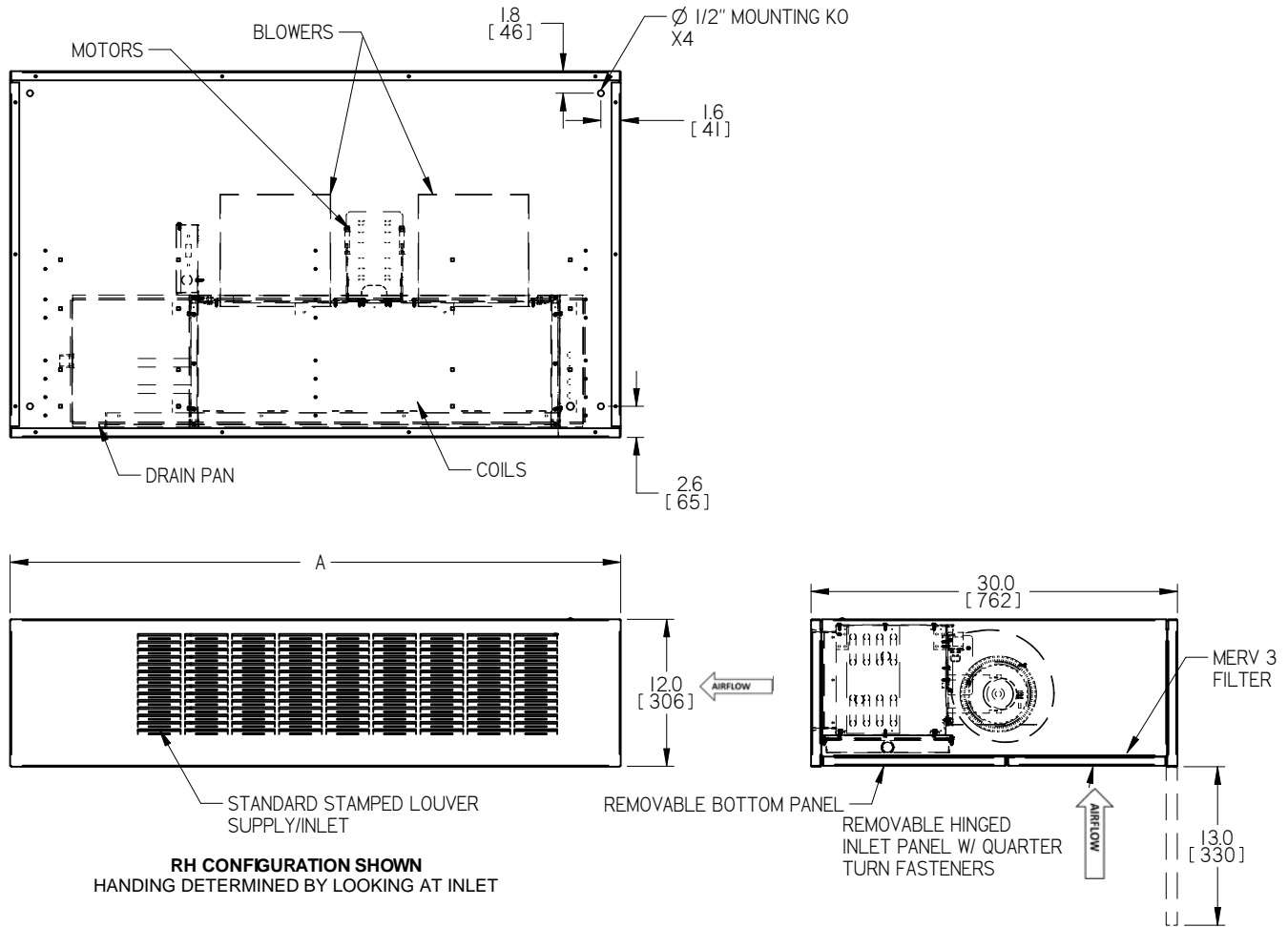
INLET SILENCER (SHIPPED LOOSE)



SILENCER SIZE	S, in	S, mm
20/30/40/50/60	18"	457
70	36"	914

ALL METRIC DIMENSIONS () ARE SOFT CONVERTED. IMPERIAL DIMENSIONS ARE CONVERTED TO METRIC AND ROUNDED TO THE NEAREST MILLIMETER.

PROJECT:	PRICE®	
ENGINEER:		
CUSTOMER:	252380	FCHG FAN COIL HORIZONTAL HIGH PERFORMANCE GENESIS
SUBMITTAL DATE:	2011/10/31	
SPEC. SYMBOL:		



SIZE	NOMINAL		A in. (mm)	# OF BLOWERS	MOTORS (HP)
	CFM	l/s			
10	200	94	36 (914)	1	1/30
20	300	142	45 (1143)	1	1/30
30	600	283	50 (1270)	2	1/10
40	800	378	70 (1778)	3	1/10, 1/30
50	1000	472	80 (2032)	4	1/10, 1/10

STANDARD CONSTRUCTION:

- FCHCB UNIT ENCASED IN CABINET
- 18 GAUGE PAINTED CABINET CONSTRUCTION
- DURABLE POWDER COAT WHITE/IVORY PAINT
- FULLY INSULATED CASING - FIBERGLASS 1/2" THICK, MIN. 1.5# DENSITY WITH MEETS NFPA 90A AND UL181
- REMOVABLE BOTTOM ACCESS PANELS
- 1/2" HANGER ROD "THROUGH BOLT" HOLES FOR SUSPENSION
- TWO 7/8 K.O. FOR ELECTRICAL ENTRY
- ELECTRICAL JUNCTION BOX
- FIVE 1-1.25" K.O. FOR WATER PIPE ENTRY AND DRAIN TUBE EXIT
- 1" THROW-AWAY FILTER, MOUNTED ON HINGED REMOVABLE BOTTOM ACCESS PANEL



ALL METRIC DIMENSIONS () ARE SOFT CONVERTED. IMPERIAL DIMENSIONS ARE CONVERTED TO METRIC AND ROUNDED TO THE NEAREST MILLIMETER.

PROJECT:		PRICE	FAN COIL FC - H - E FAN COIL HORIZONTAL EXPOSED SIZE 10-50
ENGINEER:			
CUSTOMER:		253391	
SUBMITTAL DATE:	SPEC. SYMBOL:	2011/10/31	

Solid Edge

MOTOR VOLTAGE:

- PSC ELECTRIC MOTORS WITH 3 SPEEDS
- 115V 50-60Hz 208-240V 50-60Hz 277V 60Hz

Units Size	Fan Speed	115V		208-240V		277V	
		Amps	Watts	Amps	Watts	Amps	Watts
10	High	0.68	75	0.49	84	0.51	113
	Medium	0.54	58	0.31	68	0.29	77
	low	0.43	46	0.23	53	0.2	55
20	High	0.68	75	0.49	84	0.51	113
	Medium	0.54	58	0.31	68	0.29	77
	low	0.43	46	0.23	53	0.2	55
30	High	1.76	172	0.69	166	0.65	178
	Medium	1.28	126	0.47	109	0.43	116
	low	0.95	91	0.34	76	0.28	74
40	High	2.44	247	1.18	250	1.16	291
	Medium	1.82	184	0.78	177	0.72	193
	low	1.38	137	0.57	129	0.48	129
50	High	3.28	344	1.38	332	1.3	356
	Medium	2.56	252	0.94	218	0.86	232
	low	1.9	182	0.68	152	0.56	148

COILS & DRAIN PAN:

- COILS - 1/2" O.D. COPPER TUBES, ALUMINUM SINE WAVE FINS
- COOLING COIL EQUIPPED WITH GALVANIZED STEEL DRAIN PAN EXTERNALLY INSULATED WITH FOAM
- 3/4" NPT DRAIN CONNECTION

 2 PIPE SYSTEM

- 1 - ROW 2 - ROW 3 - ROW 4 - ROW

 4 PIPE SYSTEM

- W/ PREHEAT (HEATING/COOLING)
- 1/3 - ROW 2/3 - ROW 1/4 - ROW 2/4 - ROW
- W/ REHEAT (COOLING/HEATING)
- 3/1 - ROW 3/2 - ROW 4/1 - ROW 4/2 - ROW

OPTIONS:

- STAINLESS STEEL INSULATED DRAIN PAN
- SECONDARY DRAIN
- DISCONNECT SWITCH
- MOTOR FUSE
- THERMOSTAT - SHIPPED LOOSE
- FF50 (FIBERFREE), LINER 1/2" THICK
- FB FOIL FACED FIBERGLASS LINER 5/8" THICK

COIL CONNECTION SIZES

	1 Row	2 Rows	3 Rows	4 Rows
O.D.	5/8" [16]	5/8" [16]	7/8" [22]	7/8" [22]
Nom.	1/2" [13]	1/2" [13]	3/4" [19]	3/4" [19]

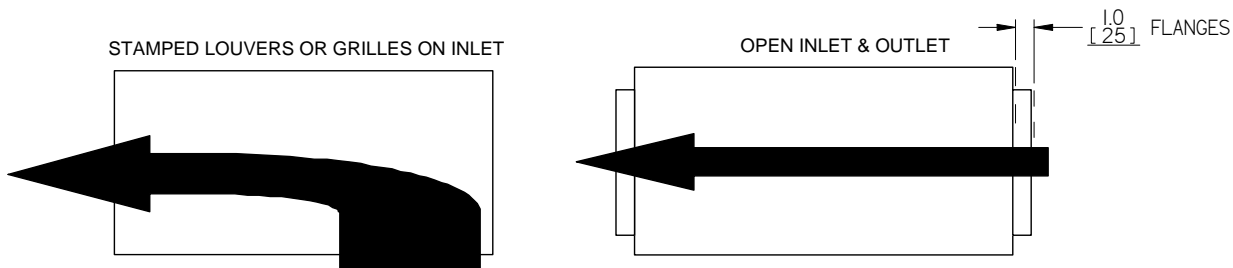
O.D. = OUSIDE DIAMETER
Nom. = NOMINAL PIPE SIZE

NOTE:

DATA IS BASED ON MOTOR SPECIFICATIONS. ACTUAL PERFORMANCE WILL VARY WITH THE APPLICATION

INLET/OUTLET CONFIGURATION:

- STAMPED LOUVERS
- GRILLES
- INLET
 - SINGLE DEFLECTION (530 SERIES)
- OUTLET
 - SINGLE DEFLECTION (510 SERIES)
 - DOUBLE DEFLECTION (520 SERIES)
- OPEN INLET & OUTLET WITH FLANGES

FLOW CONFIGURATION:


ALL METRIC DIMENSIONS () ARE SOFT CONVERTED. IMPERIAL DIMENSIONS ARE CONVERTED TO METRIC AND ROUNDED TO THE NEAREST MILLIMETER.

PROJECT:		PRICE
ENGINEER: BG		
CUSTOMER:		253391
SUBMITTAL DATE:	SPEC. SYMBOL:	2011/10/31
		FAN COIL FC - H - E FAN COIL HORIZONTAL EXPOSED SIZE 10-50