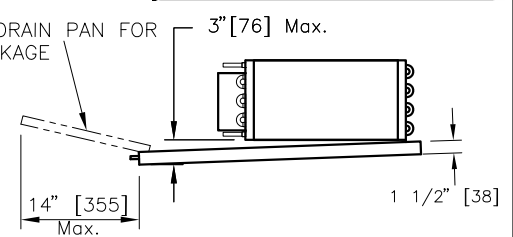


ECM MOTOR FLA					
UNIT SIZE	MOTOR H.P.	115v	208v	240v	277v
20	1/3	3.25	2.25	1.90	1.29
30	1/2	4.86	3.13	2.54	2.06
40	1/2	5.15	3.21	2.54	2.26
50	1/2 x2	8.72	5.29	4.11	3.47
60	1/2 x2	9.6	5.91	4.64	4.6
70	3/4 x2	19.04	13.33	11.37	7.40

PSC MOTOR FLA					
UNIT SIZE	MOTOR H.P.	115v	208v	240v	277v
20	1/8	1.73	.81	.81	.64
30	1/4	3.22	1.29	1.25	1.37
40	1/2	5.14	2.37	2.27	2.35
50	1/4 x2	5.93	2.58	2.47	2.63
60	1/2 x2	10	4.42	4.3	4.32
70	1/2 x2	13.96	5.80	6.10	5.94

PRICE GENESIS

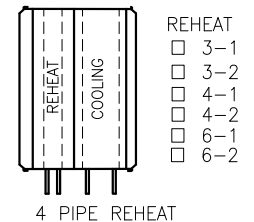
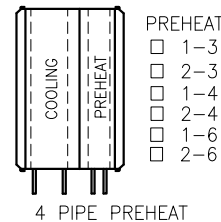
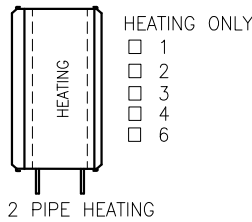
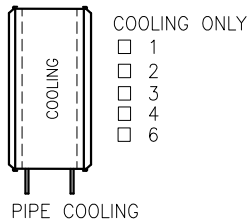


IMPERIAL UNITS (Inches)						SI UNITS (mm)					
UNIT SIZE	# OF BLOWERS	MAX FAN FLOW, CFM	OUTLET DUCT SIZE		W	H	MAX FAN FLOW, L/s	OUTLET DUCT SIZE		W	H
			D	E				D	E		
20	1	500	21	9	21	10 1/2	236	533	229	533	267
30	1	800	21	9	21	10 1/2	377	533	229	533	267
40	1	950	26	11 1/2	26	12 1/2	448	660	292	660	318
50	2	1550	42	9	42	10 1/2	731	1067	229	1067	267
60	2	2050	48	11 1/2	48	12 1/2	968	1219	292	1219	318
70	2	2800	60	11 1/2	60	12 1/2	1321	1524	292	1524	318

IMPERIAL UNITS (Inches)	NUMBER OF ROWS			
	1 & 2	3 & 4	6	
CONNECTION SIZES	20-60	7/8	7/8	1 1/8
	70	7/8	1 1/8	1 1/8

SI UNITS (mm)	NUMBER OF ROWS			
	1 & 2	3 & 4	6	
CONNECTION SIZES	20-60	22	22	29
	70	22	29	29

COIL CONFIGURATIONS



IMPERIAL UNITS (Inches)		NUMBER OF ROWS											
		COOLING			HEATING			PREHEAT			REHEAT		
		1 & 2	3 & 4	6	1 & 2	3 & 4	6	1-3;2-3;1-4;2-4	1-6, 2-6	1-3;2-3;1-4;2-4	1-6, 2-6		
L	20-40	69 5/8	71 3/8	73 3/8	69 5/8	71 3/8	73 3/8	76 3/8	78 3/8	76 3/8	78 3/8	76 3/8	78 3/8
	50-60	72 1/8	73 3/8	75 7/8	72 1/8	73 3/8	75 7/8	78 7/8	80 7/8	78 7/8	80 7/8	78 7/8	80 7/8
	70	75 1/8	76 7/8	78 7/8	75 1/8	76 7/8	78 7/8	81 7/8	83 7/8	81 7/8	83 7/8	81 7/8	83 7/8
X		14 1/8			N/A (NO DRAIN PAN)			17 7/8			17 7/8		

SI UNITS (mm)		NUMBER OF ROWS											
		COOLING			HEATING			PREHEAT			REHEAT		
		1 & 2	3 & 4	6	1 & 2	3 & 4	6	1-3;2-3;1-4;2-4	1-6, 2-6	1-3;2-3;1-4;2-4	1-6, 2-6		
L	20-40	1971	2009	2060	1768	1813	1863	2143	2194	2143	2194	1940	1990
	50-60	2035	2079	2130	1832	1876	1927	2206	2257	2206	2257	2003	2054
	70	2111	2155	2206	1908	1952	2003	2282	2333	2282	2333	2079	2130
X		359			N/A (NO DRAIN PAN)			452			452		

ALL METRIC DIMENSIONS () ARE SOFT CONVERTED. IMPERIAL DIMENSIONS ARE CONVERTED TO METRIC AND ROUNDED TO THE NEAREST MILLIMETER.

PROJECT:		PRICE®	
ENGINEER:			
CUSTOMER:		BG	FCHGQ FAN COIL HORIZONTAL QUIET HIGH PERFORMANCE GENESIS
SUBMITTAL DATE:		254507	
SPEC. SYMBOL:		2011/10/31	

FAN COIL NOTES:

- INTERNAL INSULATION – FIBERGLASS 1/2" (13mm) THICK, MIN. 1.5# DENSITY WHICH MEETS THE REQUIREMENTS OF NFPA 90A AND UL181
- 20 GAUGE ZINC COATED STEEL HOUSING
- ELECTRIC MOTOR 1 PHASE, 60 CYCLE, ECM STYLE
- ETL LISTED TO MEET UL1995 & CSA236
- BOTTOM BLOWER ACCESS PANEL.
- LEFT HAND CONTROLS CONFIGURATION IS SHOWN, RIGHT HAND OPTION IS ALSO AVAILABLE.
- DISCHARGE DESIGNED FOR SLIP & DRIVE CLEAT DUCT CONNECTIONS.

WATER COIL NOTES:

- FABRICATED FROM 22 GA. GALVANIZED STEEL. MECHANICALLY SEALED, LEAK RESISTANT CONSTRUCTION.
- ALUMINUM FINS AND COPPER TUBES WITH O.D. SWEAT CONNECTIONS.
- MANUAL AIRVENTS INCLUDED.
- HAND OF WATER COIL CONNECTIONS IS DETERMINED WHEN VIEWED FROM AIR INLET SIDE, LH SHOWN.
- COIL PERFORMANCE RATED AND CERTIFIED IN ACCORDANCE WITH THE CURRENT EDITION OF AHRI STANDARD 410.
- COOLING COIL INCLUDES SLOPED, GALVANIZED, STEEL DRAIN PAN EXTERNALLY INSULATED WITH FOAM AND 3/4"(19) MALE NPT CONNECTION.
- COOLING COIL BOTTOM PANEL IS SLOPED TO ENSURE CONDENSATE REMOVAL.
- SEE PERFORMANCE SCHEDULE FOR FLOW, HEATING/ COOLING CAPACITY/ WATER COIL CONFIGURATION.

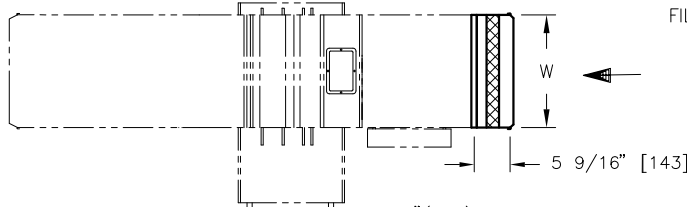
ABSORPTIVE DISCHARGE SILENCER NOTES:

- 22ga GALVANIZED CASING, MECHANICALLY FASTENED, LINED WITH FIBERGLASS INSULATION.

OPTIONS:

- | | | |
|--|--|--|
| <input type="checkbox"/> DISCONNECT SWITCH (DSW) | <input type="checkbox"/> AUXILIARY DRAIN PAN | <input type="checkbox"/> COILS ACCESS DOORS (CAD) W/SCREWS |
| <input type="checkbox"/> HANGER BRACKETS (HB), SHIPPED LOOSE | <input type="checkbox"/> STAINLESS STEEL COIL BOTTOM | FAN COIL LINERS: <input type="checkbox"/> SM <input type="checkbox"/> FF50 |
| <input type="checkbox"/> SPRING HANGER BRACKETS (HBS), SHIPPED LOOSE | <input type="checkbox"/> STAINLESS STEEL DRAIN PAN | <input type="checkbox"/> PM <input type="checkbox"/> FB |
| <input type="checkbox"/> MOTOR FUSE | <input type="checkbox"/> SECONDARY DRAIN CONNECTION | INLET SILENCER MEDIA TREATMENT: |
| <input type="checkbox"/> ECM DELUXE SPEED CONTROLLER | <input type="checkbox"/> PSC MOTOR | <input type="checkbox"/> FC – FIBERGLASS CLOTH |
| | | <input type="checkbox"/> PL – POLYMER LINER |

FILTER RACK SECTION



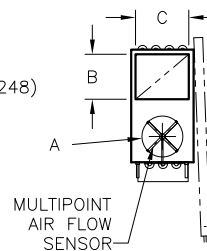
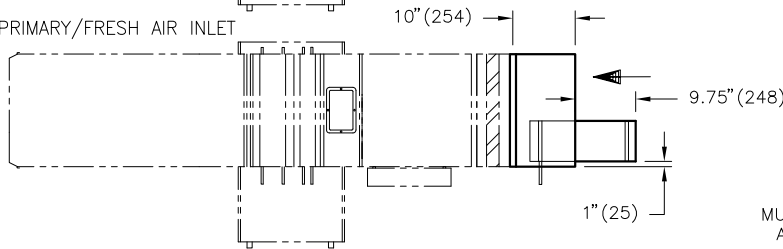
FILTER RACK OPTIONS:

- 2" MERV 8 FILTER
- 2" MERV 13 FILTER

FILTER SIZES:

SIZE	W, in	W, (mm)	H, in	H, (mm)	QTY/Unit
20/30	20 7/8	530	10 1/4	260	1
40	25 7/8	657	12 1/4	311	1
50	20 7/8	530	10 1/4	260	2
60	23 7/8	606	12 1/4	311	2
70	29 7/8	757	12 1/4	311	2

PRIMARY/FRESH AIR INLET



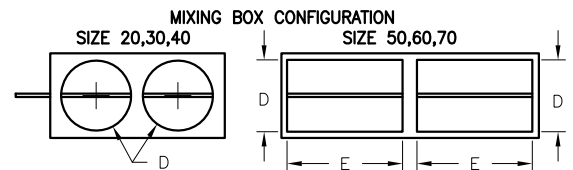
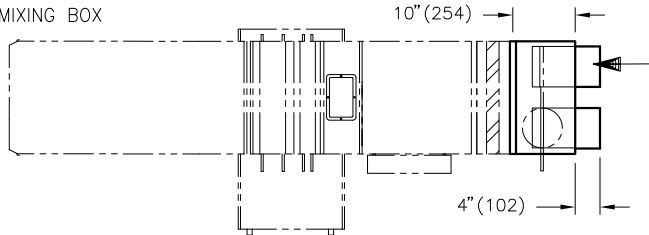
PRIMARY/FRESH AIR INLET

SIZE	A, in	A, mm
20/30/40/50	6", 8"	152, 203
60/70	6", 8", 10"	152, 203, 254

RETURN AIR INLET

SIZE	B, in	B, (mm)	C, in	C, (mm)
20/30	10 1/2	267	9 1/2	241
40	15 1/2	394	11 1/2	292
50	31 1/2	800	9 1/2	251
60	35 1/2	902	11 1/2	292
70	47 1/2	1206	11 1/2	292

MIXING BOX



MIXING BOX CONFIGURATION

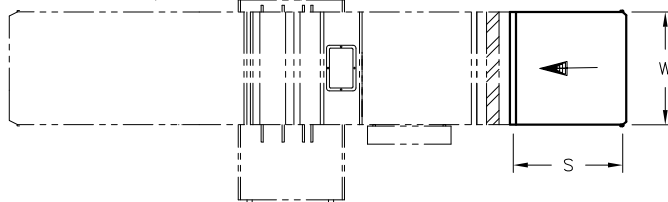
SIZE 20,30,40

SIZE 50,60,70

LH CONFIGS. SHOWN
HANDING DETERMINED BY
LOOKING AT INLET

SIZE	D, in	D, mm	E, in	E, mm
20/30	8"	203	–	–
40	10"	254	–	–
50	8"	203	16"	406
60/70	8	203	21"	533

INLET SILENCER (SHIPPED LOOSE)



SILENCER SIZE	S, in	S, mm
20/30/40/50/60	18"	457
70	36"	914

ALL METRIC DIMENSIONS () ARE SOFT CONVERTED. IMPERIAL DIMENSIONS ARE CONVERTED TO METRIC AND ROUNDED TO THE NEAREST MILLIMETER.

PROJECT:

ENGINEER:

CUSTOMER:

SUBMITTAL DATE:

SPEC. SYMBOL:

PRICE®

BG

254507

2011/10/31

FCHGQ

FAN COIL
HORIZONTAL QUIET
HIGH PERFORMANCE
GENESIS