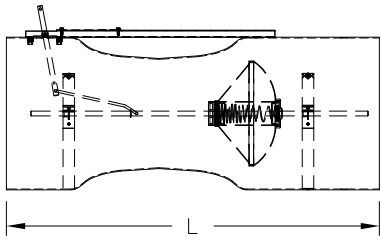
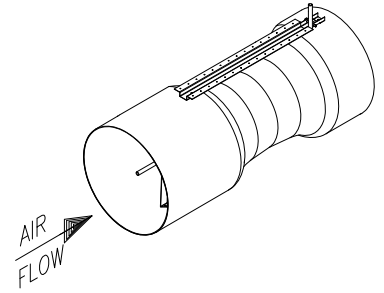
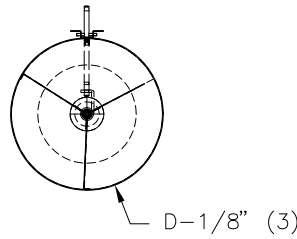


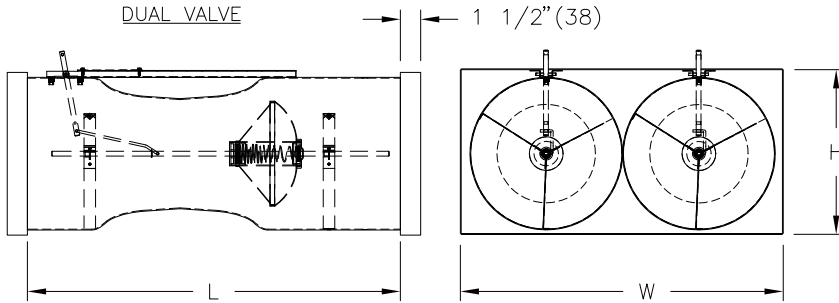
SINGLE VALVE



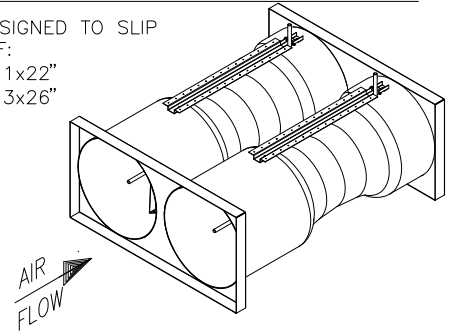
VENTURI VALVE



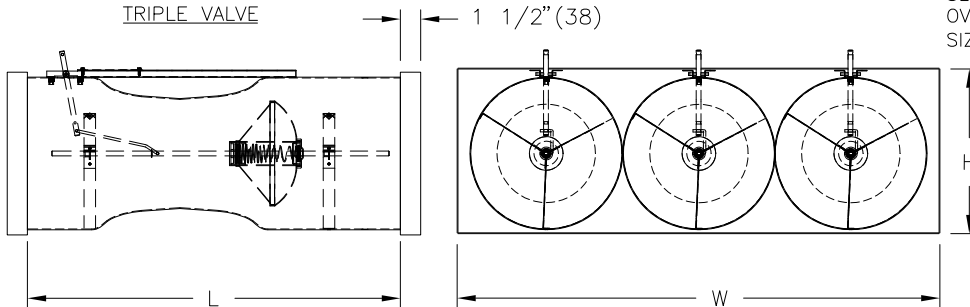
DUAL VALVE



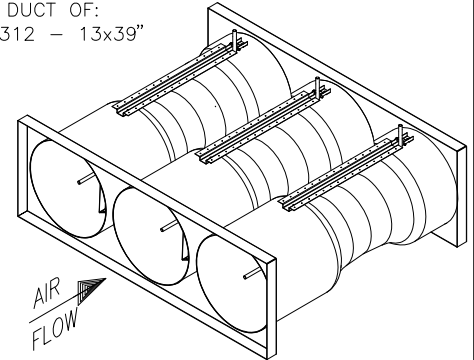
SLIP ENDS DESIGNED TO SLIP OVER DUCT OF:
 SIZE 210 - 11x22"
 SIZE 212 - 13x26"



TRIPLE VALVE



SLIP ENDS DESIGNED TO SLIP OVER DUCT OF:
 SIZE 312 - 13x39"



PERFORMANCE AND SIZING

SINGLE VALVE

UNIT	MIN. AIRFLOW	MAX AIRFLOW	D	L
SIZE	CFM (L/s)	CFM (L/s)	In. (mm)	In. (mm)
8	40 (19)	700 (330)	8 (203)	24 (610)
10	60 (28)	1000 (472)	10 (254)	25 (635)
12	90 (42)	1500 (708)	12 (305)	29 (737)

MULTIPLE VALVE

UNIT	MIN. AIRFLOW	MAX AIRFLOW	L	H	W
SIZE	CFM (L/s)	CFM (L/s)	In. (mm)	In. (mm)	In. (mm)
210	120 (56)	2000 (944)	25 (635)	11.250 (286)	22.250 (565)
212	180 (84)	3000 (1416)	29 (737)	13.250 (337)	26.250 (667)
312	270 (126)	4500 (2124)	29 (737)	13.250 (337)	39.250 (997)

VALVE NOTES:

- PRESSURE RANGE .6-3" W.C. (150-750 Pa), HORIZONTAL INSTALLATION
- 14ga SPUN ALUMINUM DUCT
- SPUN ALUMINUM CONE C/W STAINLESS STEEL SPRING IN TEFLON COATED ALUMINUM TUBE
- SHAFT - .375" DIA TEFLON COATED STAINLESS STEEL SUPPORTED WITH STAINLESS STEEL BRACKETS AND MOUNTED WITH STAINLESS STEEL HARDWARE
- WEAR RESISTANT CENTER SHAFT BEARINGS (W/ TEFLON ADDITIVE)
- .750" EXTERNAL FIBER FREE FOAM INSULATION FACTORY INSTALLED ON SUPPLY VALVE

ALL METRIC DIMENSIONS () ARE SOFT CONVERTED. IMPERIAL DIMENSIONS ARE CONVERTED TO METRIC AND ROUNDED TO THE NEAREST MILLIMETER.

PROJECT:

ENGINEER:

CUSTOMER:

SUBMITTAL DATE:

SPEC. SYMBOL:



BG

258862

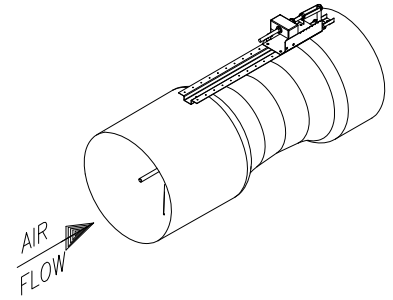
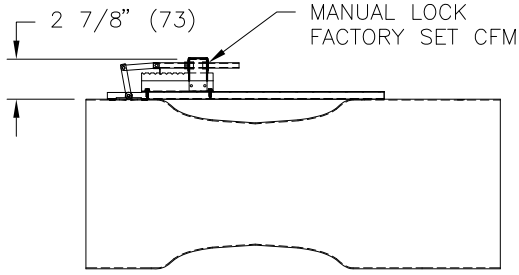
2011/09/27

VVA

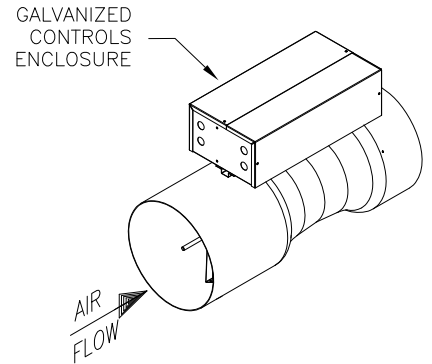
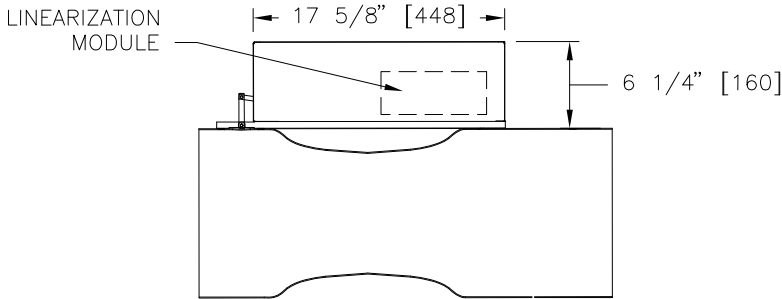
VENTURI VALVE
 MEDIUM PRESSURE
 HORIZONTAL FLOW

VALVE CONTROL OPTIONS

- CONSTANT VOLUME



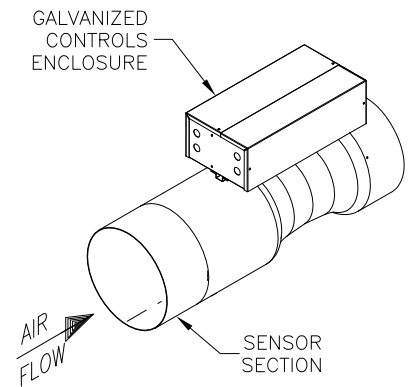
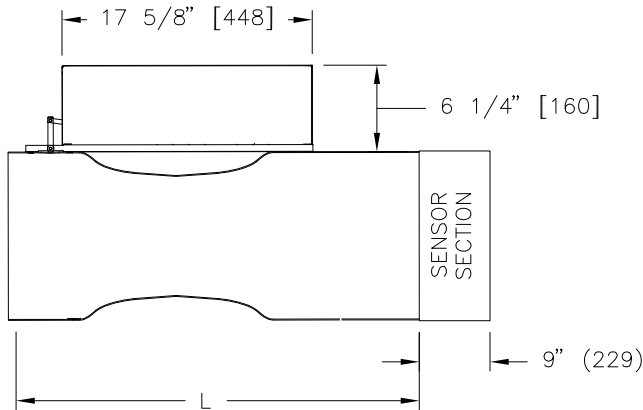
- VARIABLE VOLUME WITH ELECTRONIC AIR FLOW FEEDBACK, FACTORY CALIBRATED VOLTAGE/FLOW CHARACTERISTIC



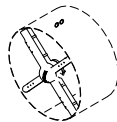
- LM – LINEARIZATION MODULE

- LMX – LINEARIZATION MODULE WITH PRESSURE ALARM

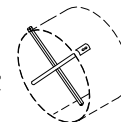
- VARIABLE VOLUME WITH AIRFLOW FEEDBACK SENSOR



- MULTIPOINT CENTER AVERAGING PLASTIC SENSOR (PRICE SP300)



- MULTIPOINT REMOVABLE STAINLESS STEEL SENSOR



ALL METRIC DIMENSIONS () ARE SOFT CONVERTED. IMPERIAL DIMENSIONS ARE CONVERTED TO METRIC AND ROUNDED TO THE NEAREST MILLIMETER.

PROJECT:		PRICE [®]	
ENGINEER:		BG	VVA VENTURI VALVE MEDIUM PRESSURE HORIZONTAL FLOW
CUSTOMER:		258862	
SUBMITTAL DATE:	SPEC. SYMBOL:	2011/09/27	

VALVE ACTUATOR OPTIONS

- STANDARD SPEED
- HIGH SPEED (SINGLE VALVE ONLY)

FAILSAFE OPTIONS

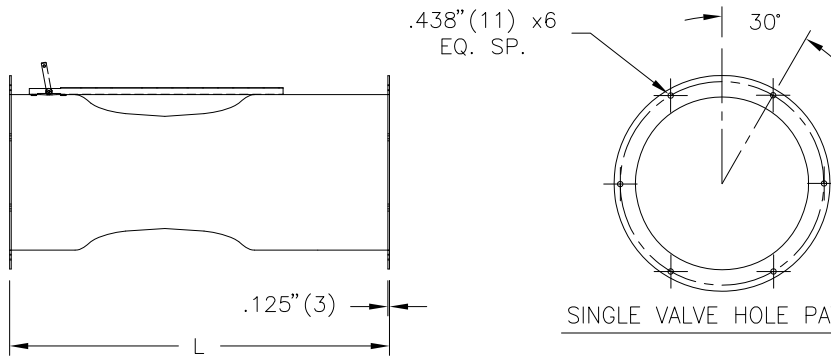
- FAIL IN PLACE
- FAIL OPEN (SINGLE VALVE ONLY)
- FAIL CLOSED (SINGLE VALVE ONLY)

FINISH

- PHENOLIC COATING (P403), -VALVE BODY & PLUNGER, (2-3 MIL)

FLANGED ENDS OPTIONS

- .125" THICK FLANGED ENDS

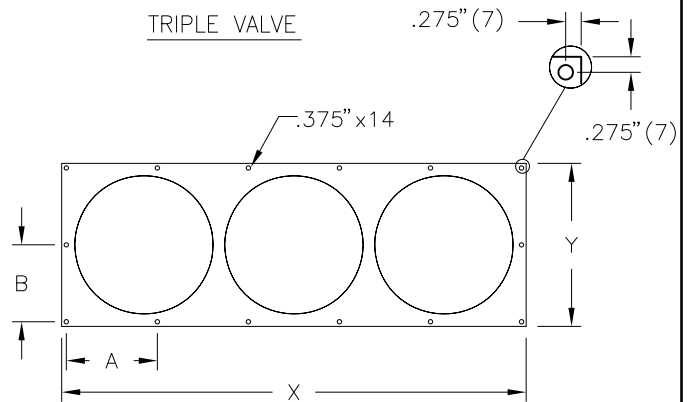
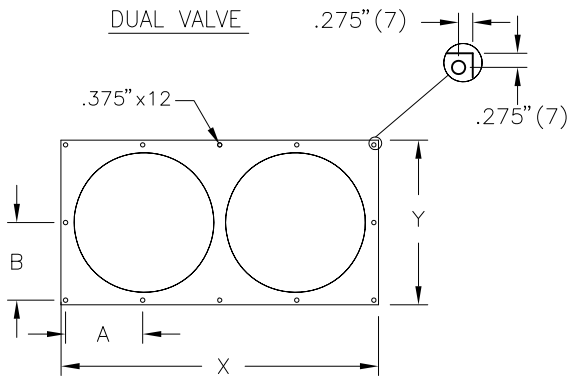


FLANGED ENDS SPECIFICATIONS:

UNIT SIZE	B.C. In. (mm)	O.D. In. (mm)
8	ø 9.25" (235)	ø 10" (254)
10	ø 11.25" (286)	ø 12" (305)
12	ø 13.25" (337)	ø 15" (381)

SINGLE VALVE HOLE PATTERN

TRIPLE VALVE

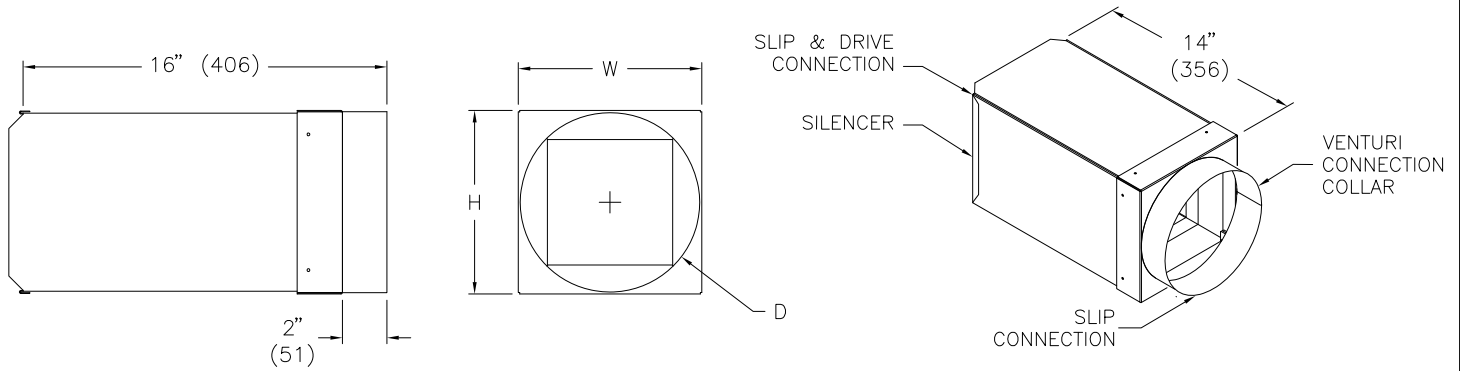


FLANGED ENDS SPECIFICATIONS:

UNIT SIZE	X	Y	A	B
	In. (mm)	In. (mm)	In. (mm)	In. (mm)
210	23.250 (591)	12.250 (311)	5.550 (141)	5.600 (142)
212	27.250 (692)	14.250 (362)	6.550 (167)	6.600 (168)
312	40.250 (1022)	14.250 (362)	7.815 (199)	6.600 (168)

ALL METRIC DIMENSIONS () ARE SOFT CONVERTED. IMPERIAL DIMENSIONS ARE CONVERTED TO METRIC AND ROUNDED TO THE NEAREST MILLIMETER.

PROJECT:		PRICE [®]	
ENGINEER:		BG	VVA VENTURI VALVE MEDIUM PRESSURE HORIZONTAL FLOW
CUSTOMER:		258862	
SUBMITTAL DATE:	SPEC. SYMBOL:	2011/09/28	

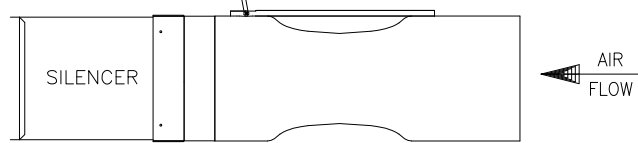


SILENCER ARRANGEMENTS:

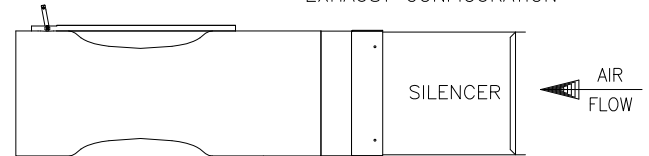
UNIT SIZE	IMPERIAL UNITS (inches)		
	W	H	D
8	8	8	8
10	10	10	10
12	12	12	12

UNIT SIZE	S.I. UNITS (mm)		
	W	H	D
8	203	203	203
10	254	254	254
12	305	305	305

SUPPLY CONFIGURATION



EXHAUST CONFIGURATION



SILENCER NOTES:

- PACKLESS SILENCER, NO ABSORPTIVE MEDIA, MECHANICALLY FASTENED CONSTRUCTION.
- ALL MATERIALS USED IN CONSTRUCTION OF SILENCER MEET OR EXCEED FLAME SPREAD CLASSIFICATION OF 25 AND A SMOKE DEVELOPMENT RATING OF 50 WHEN TESTED IN ACCORDANCE WITH ASTM E84, UL723 AND NEPA255
- SLIP CONNECTION TO VENTURI VALVE WITH SLIP AND DRIVE DISCHARGE SIDE
- SHIPPED LOOSE FOR FIELD INSTALLATION

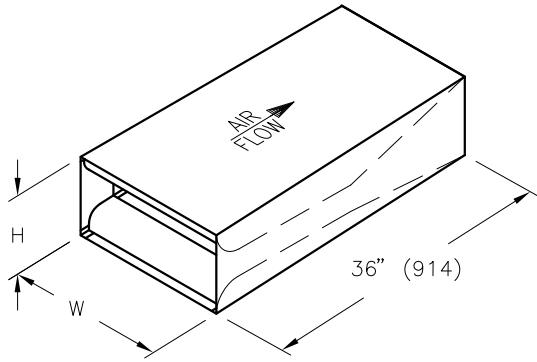
SILENCER OPTIONS:

CONSTRUCTION OPTIONS:

- GALV - 22ga GALVANIZED STEEL
- 304 SS - 24ga TYPE 304 STAINLESS STEEL
- 316 SS - 24ga TYPE 316 STAINLESS STEEL

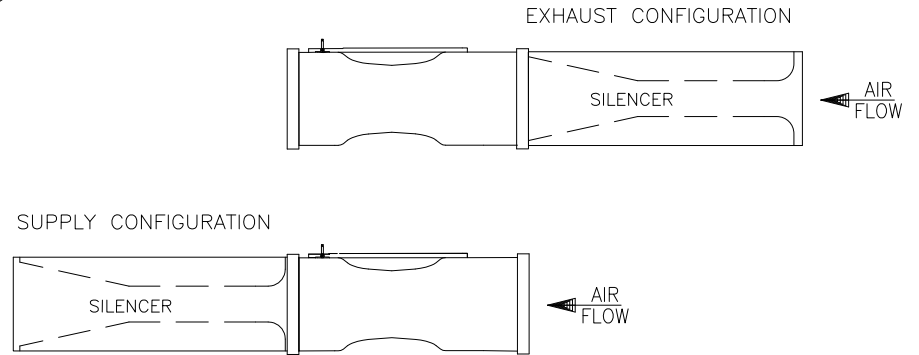
ALL METRIC DIMENSIONS () ARE SOFT CONVERTED. IMPERIAL DIMENSIONS ARE CONVERTED TO METRIC AND ROUNDED TO THE NEAREST MILLIMETER.

PROJECT:		PRICE®	
ENGINEER:		<i>BG</i>	VENTURI VALVE PACKLESS SILENCER 14" LENGTH
CUSTOMER:		258948	
SUBMITTAL DATE:	SPEC. SYMBOL:	2011/09/23	



UNIT SIZE	IMPERIAL UNITS (in)		S.I. UNITS (mm)	
	W	H	W	H
210	22	11	559	279
212	26	13	660	330
312	39	13	991	330

SILENCER ARRANGEMENTS:



SILENCER NOTES:

- MULTIBODY PACKLESS SILENCER, NO ACOUSTIC MEDIA, MECHANICALLY FASTENED CONSTRUCTION.
- ALL MATERIALS USED IN CONSTRUCTION OF SILENCER MEET OR EXCEED FLAME SPREAD CLASSIFICATION OF 25 AND A SMOKE DEVELOPMENT RATING OF 50 WHEN TESTED IN ACCORDANCE WITH ASTM E84, UL723 AND NEPA255
- SHIPPED LOOSE FOR FIELD INSTALLATION.

SILENCER OPTIONS:

CONSTRUCTION OPTIONS:

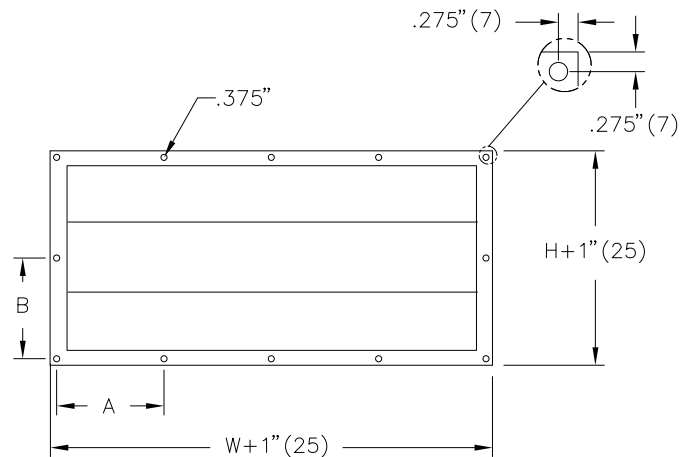
- GALV - 22ga GALVANIZED STEEL
- 304 SS - 24ga TYPE 304 STAINLESS STEEL
- 316 SS - 24ga TYPE 316 STAINLESS STEEL

DUCT CONNECTION OPTIONS:

- SL - SLIP
- FL - FLANGE

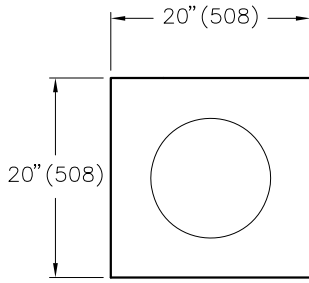
FLANGED ENDS SPECIFICATIONS:

UNIT SIZE	A	B
	In. (mm)	In. (mm)
210	5.675 (144)	5.850 (149)
212	6.575 (170)	6.850 (174)
312	7.940 (202)	6.850 (174)

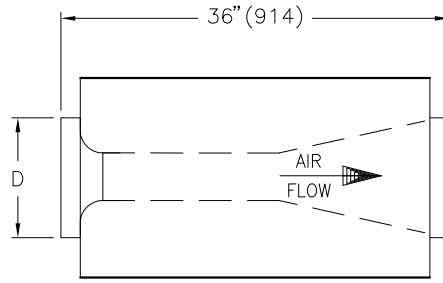


ALL METRIC DIMENSIONS () ARE SOFT CONVERTED. IMPERIAL DIMENSIONS ARE CONVERTED TO METRIC AND ROUNDED TO THE NEAREST MILLIMETER.

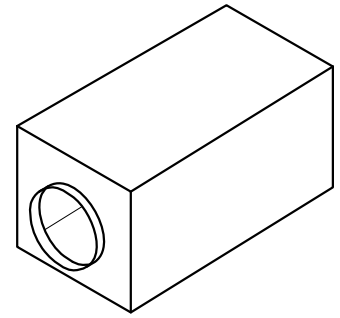
PROJECT:		PRICE®	
ENGINEER:		BG	VENTURI VALVE MULTIBODY PACKLESS SILENCER 36" LENGTH
CUSTOMER:		258949	
SUBMITTAL DATE:	SPEC. SYMBOL:	2011/09/26	



END VIEW



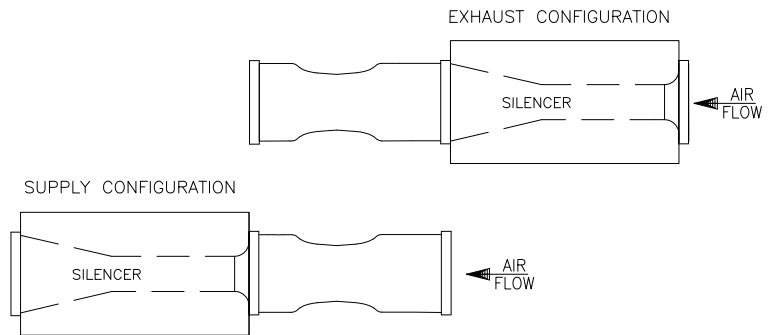
TOP VIEW



SILENCER ARRANGEMENTS:

UNIT SIZE	IMPERIAL UNITS (inches)		
	8	10	12
D	7 ⁷ / ₈	9 ⁷ / ₈	11 ⁷ / ₈

UNIT SIZE	S.I. UNITS (mm)		
	8	10	12
D	200	251	302



SILENCER NOTES:

- PACKLESS SILENCER, NO ACOUSTIC MEDIA, MECHANICALLY FASTENED CONSTRUCTION.
- ALL MATERIALS USED IN CONSTRUCTION OF SILENCER MEET OR EXCEED FLAME SPREAD CLASSIFICATION OF 25 AND A SMOKE DEVELOPMENT RATING OF 50 WHEN TESTED IN ACCORDANCE WITH ASTM E84, UL723 AND NEPA255
- SHIPPED LOOSE FOR FIELD INSTALLATION.

SILENCER OPTIONS:

CONSTRUCTION OPTIONS:

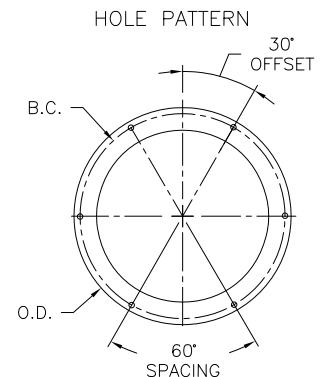
- GALV – 22ga GALVANIZED STEEL
- 304 SS – 24ga TYPE 304 STAINLESS STEEL
- 316 SS – 24ga TYPE 316 STAINLESS STEEL

DUCT CONNECTION OPTIONS:

- SL – SLIP-SLIP
- FL – FLANGE-FLANGE

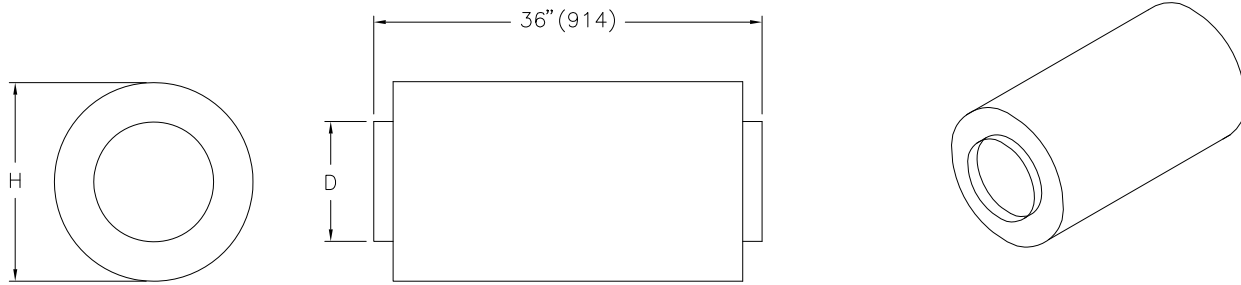
FLANGED ENDS SPECIFICATIONS:

TERMINAL SIZE	B.C. IN (mm)	O.D. IN (mm) GALV	O.D. IN (mm) SS	HOLE DIA IN (mm)	HOLE QTY
8	ø 9 1/4" (235)	ø 10" (254)	ø 10" (254)	ø 7/16" (11)	6
10	ø 11 1/4" (286)	ø 12" (305)	ø 12" (305)	ø 7/16" (11)	6
12	ø 13 1/4" (337)	ø 15" (381)	ø 14" (356)	ø 7/16" (11)	6



ALL METRIC DIMENSIONS () ARE SOFT CONVERTED. IMPERIAL DIMENSIONS ARE CONVERTED TO METRIC AND ROUNDED TO THE NEAREST MILLIMETER.

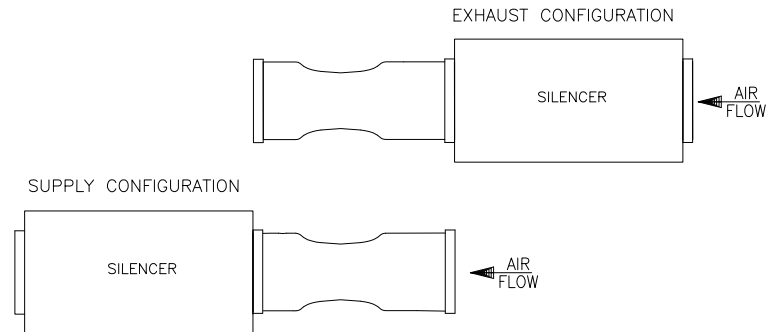
PROJECT:		PRICE[®]	
ENGINEER:		BG	VENTURI VALVE PACKLESS SILENCER 36" LENGTH
CUSTOMER:		258951	
SUBMITTAL DATE:	SPEC. SYMBOL:	2011/09/26	



SILENCER ARRANGEMENTS:

UNIT SIZE	IMPERIAL UNITS (inches)		
	8	10	12
D	7.88	9.88	11.88
H	16	18	20

UNIT SIZE	S.I. UNITS (mm)		
	8	10	12
D	200	251	302
H	406	457	508



SILENCER NOTES:

- CIRCULAR SILENCER, MECHANICALLY FASTENED CONSTRUCTION, FIBERGLASS ACOUSTIC MEDIA.
- ALL MATERIALS USED IN CONSTRUCTION OF SILENCER MEET OR EXCEED FLAME SPREAD CLASSIFICATION OF 25 AND A SMOKE DEVELOPMENT RATING OF 50 WHEN TESTED IN ACCORDANCE WITH ASTM E84, UL723 AND NEPA255
- SHIPPED LOOSE FOR FIELD INSTALLATION.

SILENCER OPTIONS:

CONSTRUCTION OPTIONS:

- GALV - 22ga GALVANIZED STEEL
- 304 SS - 24ga TYPE 304 STAINLESS STEEL
- 316 SS - 24ga TYPE 316 STAINLESS STEEL

ABSORPTIVE MEDIA TREATMENT OPTIONS:

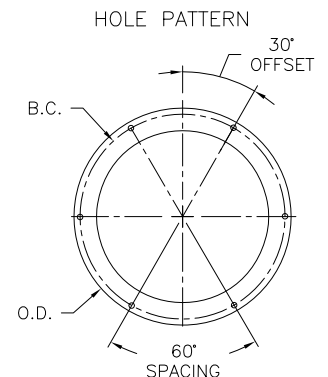
- PL - POLYMER FILM
- FC - FIBERGLASS CLOTH

DUCT CONNECTION OPTIONS:

- SL - SLIP-SLIP
- FL - FLANGE-FLANGE

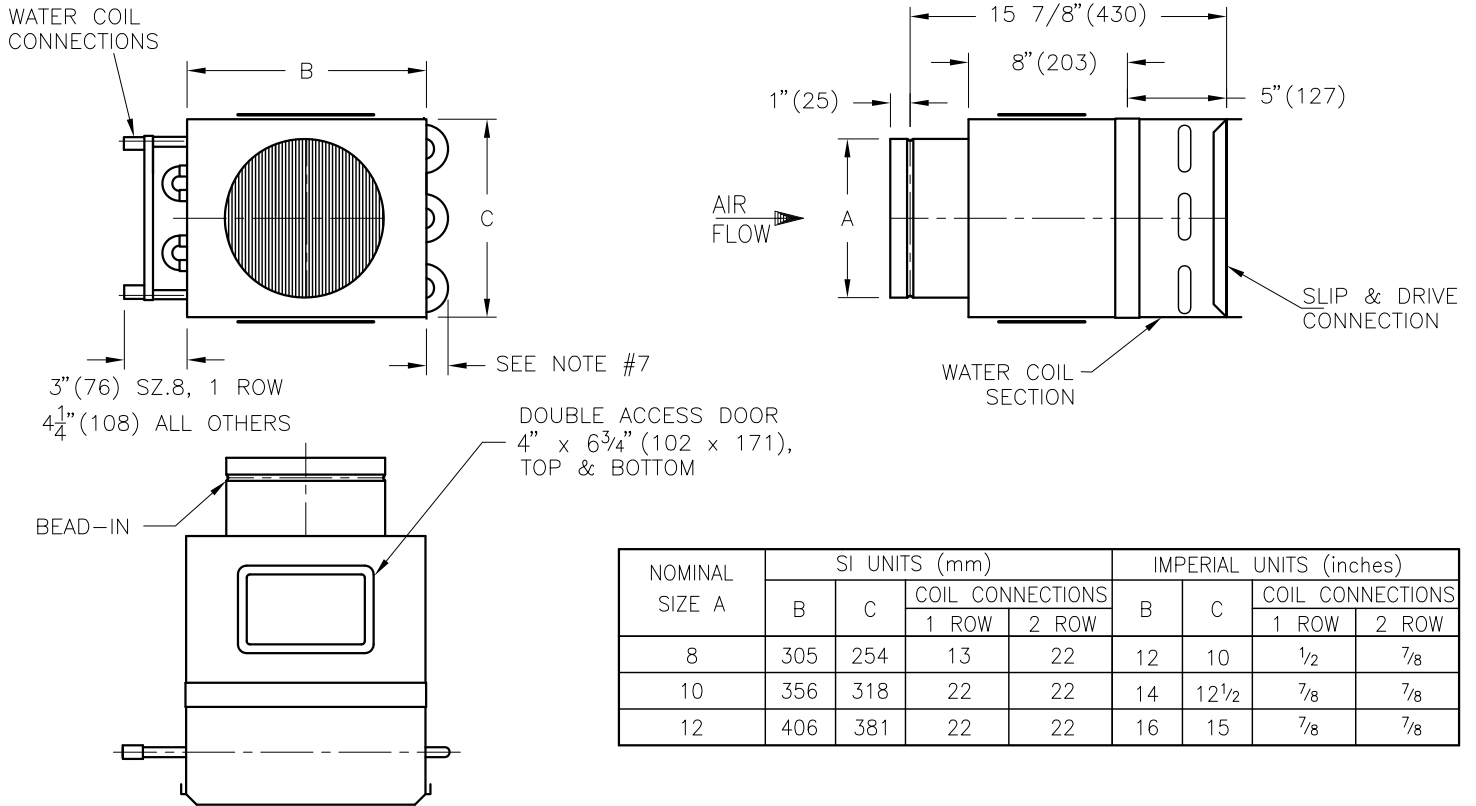
FLANGED ENDS SPECIFICATIONS:

TERMINAL SIZE	B.C. IN (mm)	O.D. IN (mm) GALV	O.D. IN (mm) SS	HOLE DIA IN (mm)	HOLE QTY
8	ø 9 1/4" (235)	ø 10" (254)	ø 10" (254)	ø 7/16" (11)	6
10	ø 11 1/4" (286)	ø 12" (305)	ø 12" (305)	ø 7/16" (11)	6
12	ø 13 1/4" (337)	ø 15" (381)	ø 14" (356)	ø 7/16" (11)	6



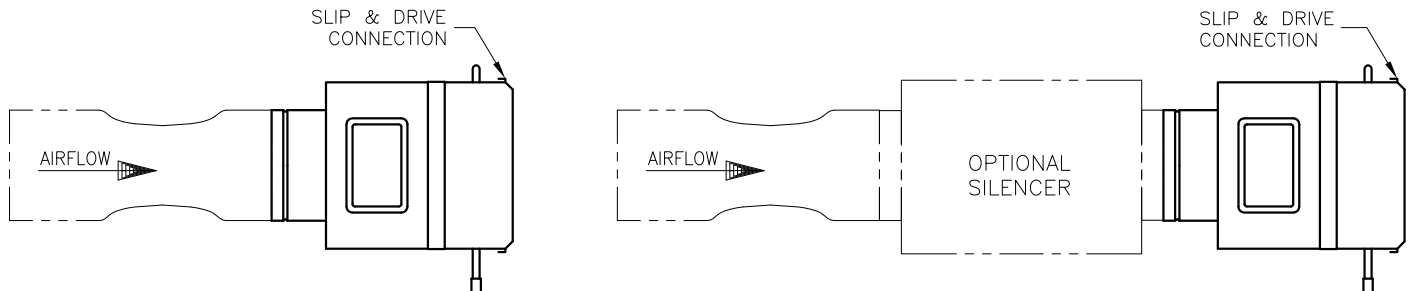
ALL METRIC DIMENSIONS () ARE SOFT CONVERTED. IMPERIAL DIMENSIONS ARE CONVERTED TO METRIC AND ROUNDED TO THE NEAREST MILLIMETER.

PROJECT:		PRICE®	
ENGINEER:		BG	VENTURI VALVE ABSORPTIVE SILENCER 36" LENGTH
CUSTOMER:		258952	
SUBMITTAL DATE:	SPEC. SYMBOL:	2011/09/26	



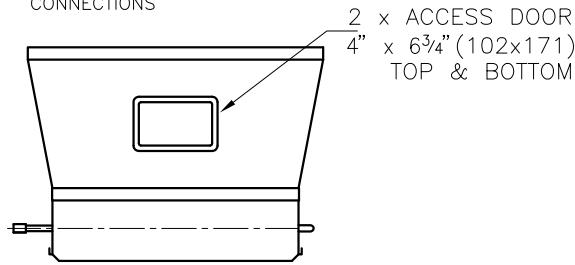
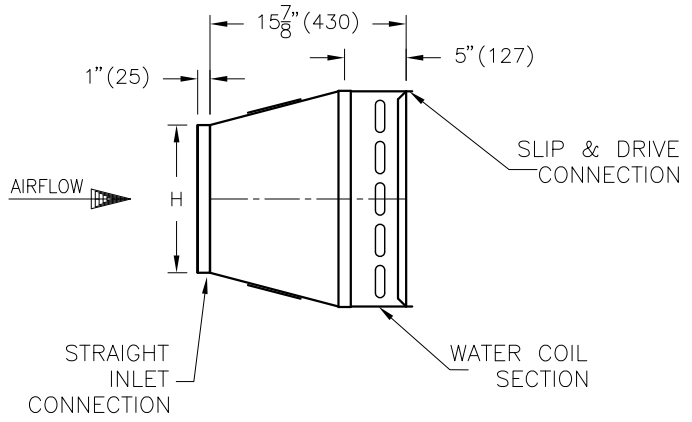
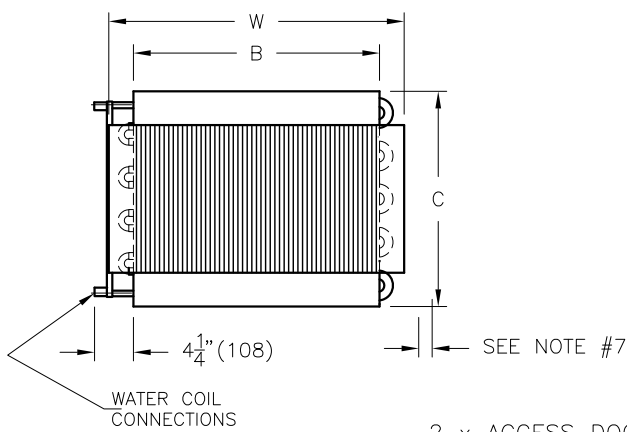
- NOTES:**
1. FABRICATED FROM 22 GA. GALVANIZED STEEL, MECHANICALLY SEALED, LEAK RESISTANT CONSTRUCTION.
 2. HOT WATER COILS HAVE COPPER TUBES AND ALUMINUM FINS WITH O.D. SWEAT CONNECTIONS.
 3. REFER TO SUBMITTED TERMINAL UNIT SCHEDULE FOR AIR VOLUMES AND HOT WATER COIL CAPACITIES.
 4. METHOD OF VENTING HOT WATER COIL IS TO BE PROVIDED BY INSTALLING CONTRACTOR
 5. TWO SCREWED-IN ACCESS DOORS FOR INSPECTION AND MAINTENANCE OF COIL, TOP & BOTTOM.
 6. HAND OF HOT WATER COIL CONNECTIONS IS DETERMINED WHEN VIEWED FROM AIR INLET SIDE. LEFT HAND COIL CONNECTION IS SHOWN. UNIT IS REVERSIBLE.
 7. ALLOW 1 1/2" (38) MINIMUM CLEARANCE FOR INSTALLATION AT THIS END.
 8. CONFIGURATION OF COIL CONNECTION VARIES WITH SIZE & CIRCUITRY OF COIL.
 9. PERFORMANCE RATED AND CERTIFIED IN ACCORDANCE WITH THE CURRENT EDITION OF ARI STANDARD 410.

SINGLE VALVE & ADAPTOR CONFIGURATIONS
TOP VIEW



ALL METRIC DIMENSIONS () ARE SOFT CONVERTED. IMPERIAL DIMENSIONS ARE CONVERTED TO METRIC AND ROUNDED TO THE NEAREST MILLIMETER.

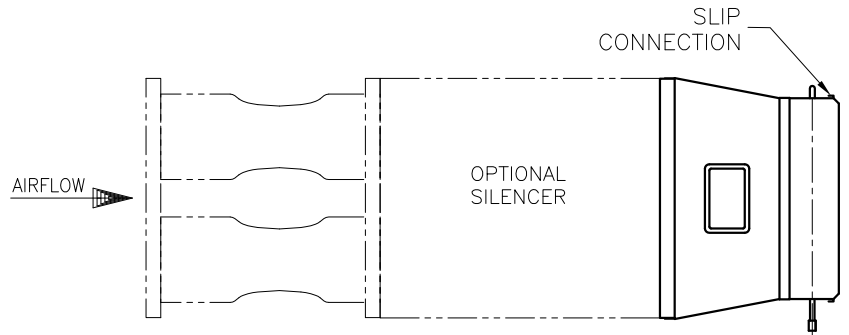
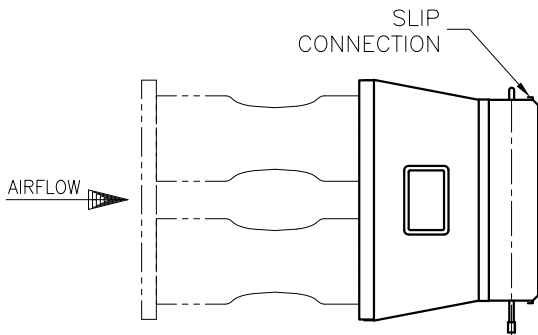
PROJECT:			
ENGINEER:			
CUSTOMER:		255933	
SUBMITTAL DATE:	SPEC. SYMBOL:	2010/11/26	



NOMINAL SIZE W x H	SI UNITS (mm)				IMPERIAL UNITS (inches)			
	B	C	COIL CONNECTIONS		B	C	COIL CONNECTIONS	
			1 ROW	2 ROW			1 ROW	2 ROW
"210" 22 x 11	508	445	22	22	20	17 1/2	7/8	7/8
"212" 26 x 13	610	457	22	22	24	18	7/8	7/8
"312" 39 x 13	965	457	22	22	38	18	7/8	7/8

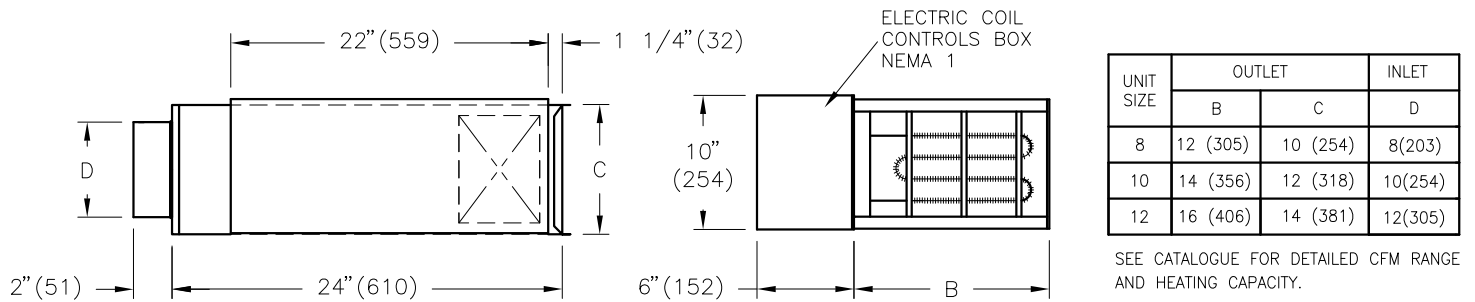
- NOTES:**
1. FABRICATED FROM 22 GA. GALVANIZED STEEL, MECHANICALLY SEALED, LEAK RESISTANT CONSTRUCTION.
 2. HOT WATER COILS HAVE COPPER TUBES AND ALUMINUM FINS WITH O.D. SWEAT CONNECTIONS.
 3. REFER TO SUBMITTED TERMINAL UNIT SCHEDULE FOR AIR VOLUMES AND HOT WATER COIL CAPACITIES.
 4. METHOD OF VENTING HOT WATER COIL IS TO BE PROVIDED BY INSTALLING CONTRACTOR
 5. TWO SCREWED-IN ACCESS DOORS FOR INSPECTION AND MAINTENANCE OF COIL, TOP & BOTTOM.
 6. HAND OF HOT WATER COIL CONNECTIONS IS DETERMINED WHEN VIEWED FROM AIR INLET SIDE. LEFT HAND COIL CONNECTION IS SHOWN. UNIT IS REVERSIBLE.
 7. ALLOW 1 1/2 " (38) MINIMUM CLEARANCE FOR INSTALLATION AT THIS END.
 8. CONFIGURATION OF COIL CONNECTION VARIES WITH SIZE & CIRCUITRY OF COIL.
 9. PERFORMANCE RATED AND CERTIFIED IN ACCORDANCE WITH THE CURRENT EDITION OF ARI STANDARD 410.

MULTIBODY VALVE & TRANSITION CONFIGURATIONS
TOP VIEW



ALL METRIC DIMENSIONS () ARE SOFT CONVERTED. IMPERIAL DIMENSIONS ARE CONVERTED TO METRIC AND ROUNDED TO THE NEAREST MILLIMETER.

PROJECT:		price®	
ENGINEER:			
CUSTOMER:		255933	
SUBMITTAL DATE:	SPEC. SYMBOL:	2010/11/26	



- NOTES:**
1. FABRICATED FROM 20 GA. GALVANIZED STEEL, MECHANICALLY SEALED, LEAK RESISTANT CONSTRUCTION.
 2. RECTANGULAR DISCHARGE OPENINGS HAVE SLIP & DRIVE CLEAT DUCT CONNECTIONS.
 3. CONTROL ASSEMBLY WILL BE SUPPLIED AS ILLUSTRATED ON RIGHT HAND SIDE UNLESS SPECIFIED OTHERWISE.
 4. REFER TO CONTROLS SEQUENCE FOR SUPPLIER OF DIGITAL CONTROLS.
 5. SCR CONTROLS OVER 25 AMPS 3 ϕ USE 19" (483) CONTROL BOX.
 6. ASSEMBLY ETL CERTIFIED TO UL1995 & CSA236.
 7. SHIPPED LOOSE FROM VENTURI VALVE.

STANDARD COIL FEATURES:

- AUTOMATIC RESET THERMAL CUTOUT
- MANUAL RESET THERMAL CUTOUT
- LOW WATT DENSITY ELEMENTS, HIGH GRADE NICKEL-CHROME ALLOY
- MAGNETIC CONTACTORS
- AIR FLOW SWITCH
- 24VAC/50VAC CLASS 2 TRANSFORMER
- HINGED ACCESS DOOR
- SINGLE POINT ELECTRICAL CONNECTION
- REFER TO SUBMITTED CONTROL DIAGRAMS FOR STANDARD CONTROL COMPONENTS TO BE SUPPLIED.
- MAIN SUPPLY FUSES
- DOOR INTERLOCK DISCONNECT SWITCH

OPTIONAL COIL FEATURES:

- SCR CONTROLS
- SCR-DAT CONTROLS
- 0 to 10 Vdc CONTROL SIGNAL
- 4 to 20 mA CONTROL SIGNAL

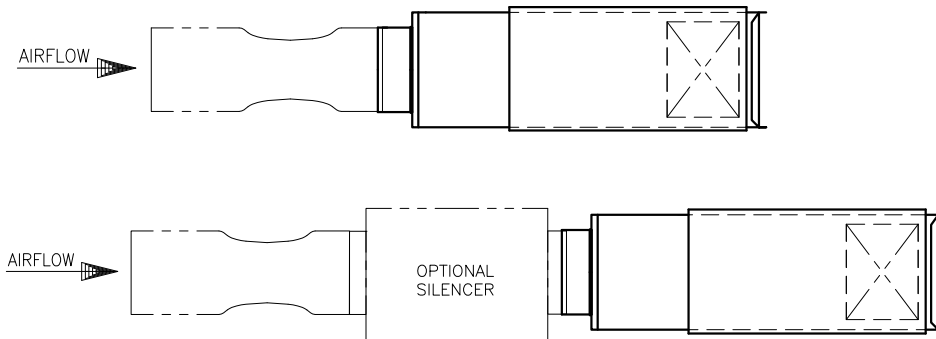
LINER OPTIONS:

- CRAF
- SM
- FF (HEATER SECTION IS NOT INSULATED)

SUPPLY VOLTAGE:

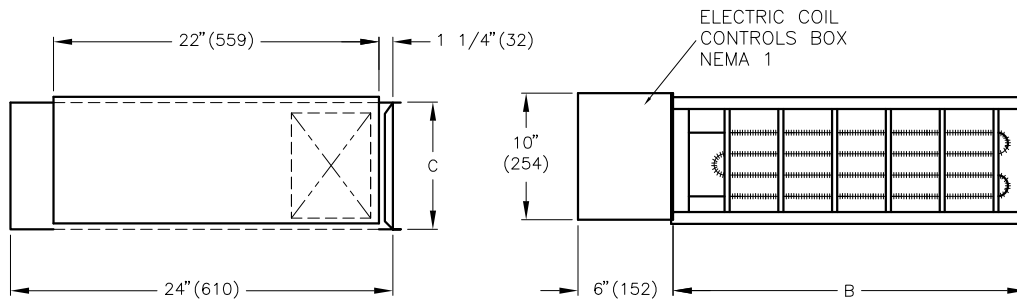
- 120/1 ϕ
- 208/1 ϕ (2 WIRE)
- 208/3 ϕ (3 WIRE)
- 240/1 ϕ
- 277/1 ϕ
- 347/1 ϕ
- 480/1 ϕ
- 480/3 ϕ (3 WIRE)
- 600/3 ϕ (3 OR 4 WIRE)

SINGLE VALVE & EC HOUSING CONFIGURATIONS



ALL METRIC DIMENSIONS () ARE SOFT CONVERTED. IMPERIAL DIMENSIONS ARE CONVERTED TO METRIC AND ROUNDED TO THE NEAREST MILLIMETER.

PROJECT:		PRICE®	
ENGINEER:		<i>BG</i>	VENTURI VALVE ACCESSORY ELECTRIC COIL WITH HOUSING SIZES 8-12
CUSTOMER:		259625	
SUBMITTAL DATE:	SPEC. SYMBOL:	2012/01/11	



UNIT SIZE	OUTLET	
	B	C
210	22 (559)	11 (279)
212	26 (660)	13 (330)
312	39 (991)	13 (330)

SEE CATALOGUE FOR DETAILED CFM RANGE AND HEATING CAPACITY



- NOTES:**
1. FABRICATED FROM 20 GA. GALVANIZED STEEL, MECHANICALLY SEALED, LEAK RESISTANT CONSTRUCTION.
 2. RECTANGULAR DISCHARGE OPENINGS HAVE SLIP & DRIVE CLEAT DUCT CONNECTIONS.
 3. CONTROL ASSEMBLY WILL BE SUPPLIED AS ILLUSTRATED ON RIGHT HAND SIDE UNLESS SPECIFIED OTHERWISE.
 4. REFER TO CONTROLS SEQUENCE FOR SUPPLIER OF DIGITAL CONTROLS.
 5. SCR CONTROLS OVER 25 AMPS 3Ø USE 19" (483) CONTROL BOX.
 6. ASSEMBLY ETL CERTIFIED TO UL1995 & CSA236.
 7. SHIPPED LOOSE FROM VENTURI VALVE.

STANDARD COIL FEATURES:

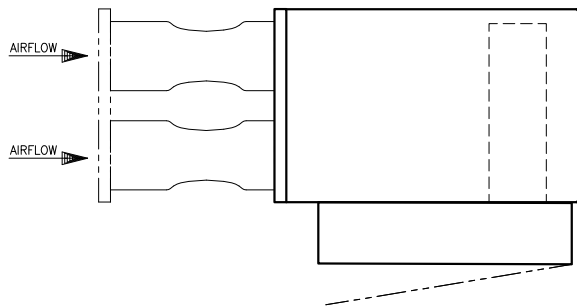
- AUTOMATIC RESET THERMAL CUTOUT
- MANUAL RESET THERMAL CUTOUT
- LOW WATT DENSITY ELEMENTS, HIGH GRADE NICKEL-CHROME ALLOY
- MAGNETIC CONTACTORS
- AIR FLOW SWITCH
- 24VAC/50VAC CLASS 2 TRANSFORMER
- HINGED ACCESS DOOR
- SINGLE POINT ELECTRICAL CONNECTION
- REFER TO SUBMITTED CONTROL DIAGRAMS FOR STANDARD CONTROL COMPONENTS TO BE SUPPLIED.
- MAIN SUPPLY FUSES
- DOOR INTERLOCK DISCONNECT SWITCH

OPTIONAL COIL FEATURES:

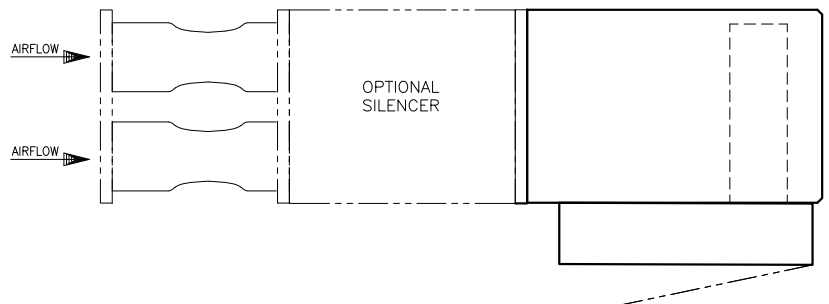
- SCR CONTROLS SCR-DAT CONTROLS
 - 0 to 10 Vdc CONTROL SIGNAL
 - 4 to 20 mA CONTROL SIGNAL
- LINER OPTIONS:
- CRAF
 - SM
 - FF (HEATER SECTION IS NOT INSULATED)

SUPPLY VOLTAGE:

- 120/1Ø
- 208/1Ø (2 WIRE)
- 208/3Ø (3 WIRE)
- 240/1Ø
- 277/1Ø
- 347/1Ø
- 480/1Ø
- 480/3Ø (3 WIRE)
- 600/3Ø (3 OR 4 WIRE)



MULTIBODY VALVE & EC HOUSING CONFIGURATIONS:



ALL METRIC DIMENSIONS () ARE SOFT CONVERTED. IMPERIAL DIMENSIONS ARE CONVERTED TO METRIC AND ROUNDED TO THE NEAREST MILLIMETER.

PROJECT:			
ENGINEER:			
CUSTOMER:		259625	VENTURI VALVE ACCESSORIES ELECTRIC COIL WITH HOUSING SIZES 210, 212, 312
SUBMITTAL DATE:	SPEC. SYMBOL:	2012/01/11	