

UNIT SIZE	MAX L/S	MAX CFM	S.I. UNITS mm				IMPERIAL UNITS inches			
			INLET/OUTLET		VALVE	LENGTH	INLET/OUTLET		VALVE	LENGTH
			B	C	A	L	B	C	A	L
4	106	225	305	203	152	394	12	8	6	15 1/2
5	165	350			178		12	10	7	
6	212	450			203				8	
7	307	650	356	318	229		14	12 1/2	9	
8	378	800			254				10	
9	496	1050	406	381	305		16	15	12	
10	637	1350			254				10	
12	991	2100	508	445	356	483	20	17 1/2	14	19
14	1225	2600			406				16	
16	1649	3500			610				18	

NOTES:

- INTERNAL INSULATION – RIGID FIBERGLASS 5/8" (16mm) THICK, MIN. 4# DENSITY WITH FOIL FACE WHICH MEETS REQUIREMENTS OF NFPA 90A, UL181, AND ASTM C-665. INSULATION EDGES COVERED WITH METAL ANGLES.
- 22GA. ZINC COATED STEEL HOUSING. MECHANICALLY SEALED AND GASKETED, LEAK RESISTANT CONSTRUCTION.
- RECTANGULAR INLET & DISCHARGE OPENING WITH SLIP AND DRIVE CLEAT DUCT CONNECTION.
- DIGITAL CONTROLS BY CONTROL CONTRACTOR.

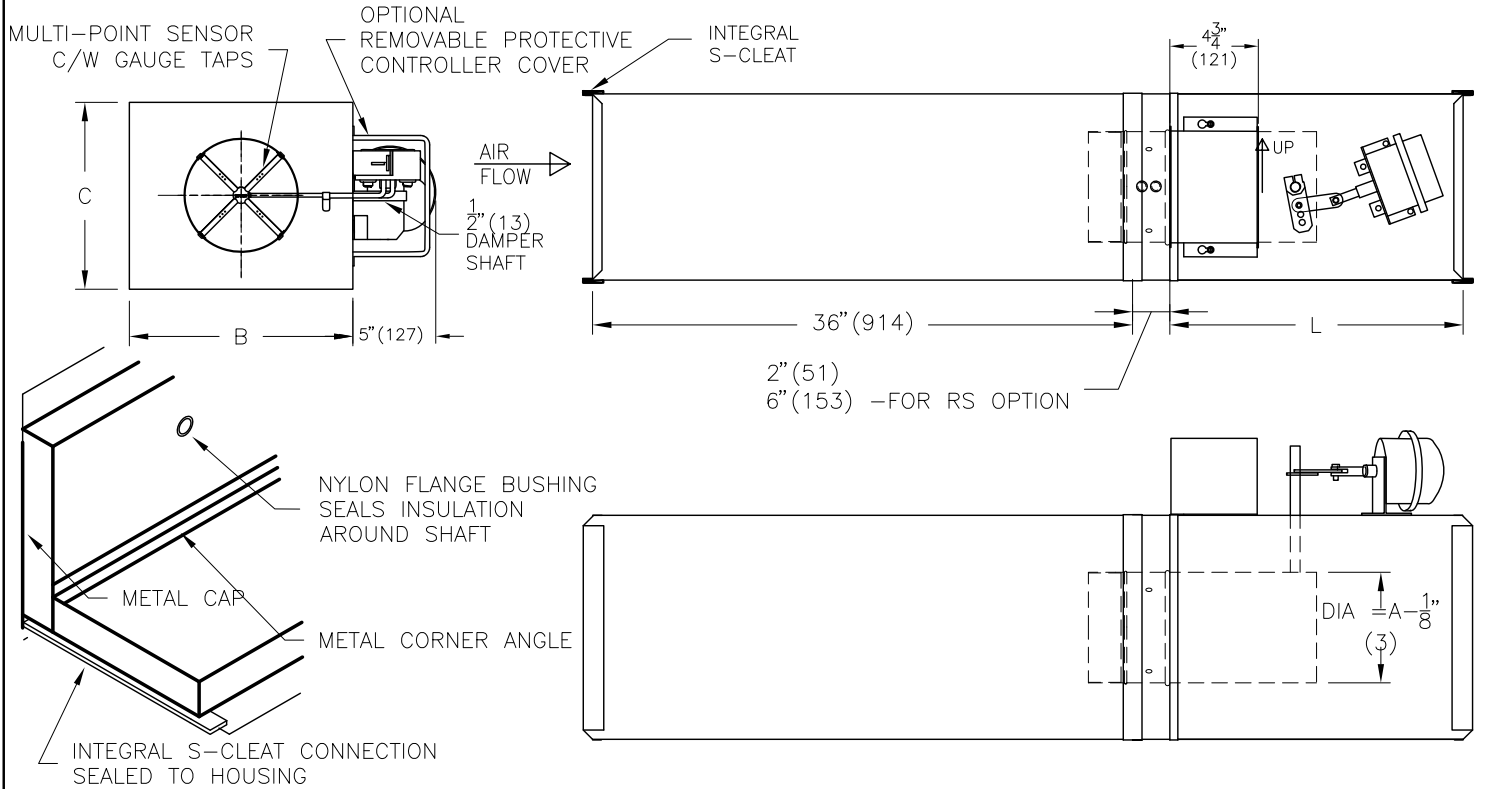
- MULTI-POINT SENSOR SUPPLIED BY PRICE.

OPTIONS:

- CONTROLS ENCLOSURE
- DISCONNECT SWITCH
- LINERS
- FF PM PM1 AFPM AFPM1
- FF1 WFPM SM SM1 CRWF
- FF50 FB FB1 CRAF CRAF1
- RS – BOTTOM REMOVABLE SENSOR

ALL METRIC DIMENSIONS () ARE SOFT CONVERTED. IMPERIAL DIMENSIONS ARE CONVERTED TO METRIC AND ROUNDED TO THE NEAREST MILLIMETER.

PROJECT:		PRICE [®]	
ENGINEER:		BG	SDE5000 SINGLE DUCT TERMINAL VARIABLE VOLUME DIGITAL CONTROL QUIET EXHAUST
CUSTOMER:		240250	
SUBMITTAL DATE:	SPEC. SYMBOL:	2011/04/19	



UNIT SIZE	MAX L/S	MAX CFM	S.I. UNITS mm				IMPERIAL UNITS inches			
			INLET/OUTLET		VALVE	LENGTH	INLET/OUTLET		VALVE	LENGTH
			B	C	A	L	B	C	A	L
4	106	225	305	203	152	394	12	8	6	15 1/2
5	165	350								
6	212	450								
7	307	650	305	254	178		12	10	7	
8	378	800			203				8	
9	496	1050	356	318	229		14	12 1/2	9	
10	637	1350			254				10	
12	991	2100	406	381	305	16	15	12		
14	1225	2600	508	445	356	483	20	17 1/2	14	19
16	1649	3500	610	457	406		24	18	16	

NOTES:

- INTERNAL INSULATION – RIGID FIBERGLASS 5/8" (16mm) THICK, MIN. 4# DENSITY WITH FOIL FACE WHICH MEETS REQUIREMENTS OF NFPA 90A, UL181, AND ASTM C-665. INSULATION EDGES COVERED WITH METAL ANGLES.
- 22GA. ZINC COATED STEEL HOUSING. MECHANICALLY SEALED AND GASKETED, LEAK RESISTANT CONSTRUCTION.
- RECTANGULAR INLET & DISCHARGE OPENING WITH SLIP AND DRIVE CLEAT DUCT CONNECTION.
- PRESSURE INDEPENDENT.
- GAUGE TAPS ARE STANDARD.
- PNEUMATIC ACTUATOR SUPPLIED & MOUNTED BY PRICE.
- CLEAN, DRY, 20 PSI (138 kPa) CONTROL AIR REQUIRED.

OPTIONS:

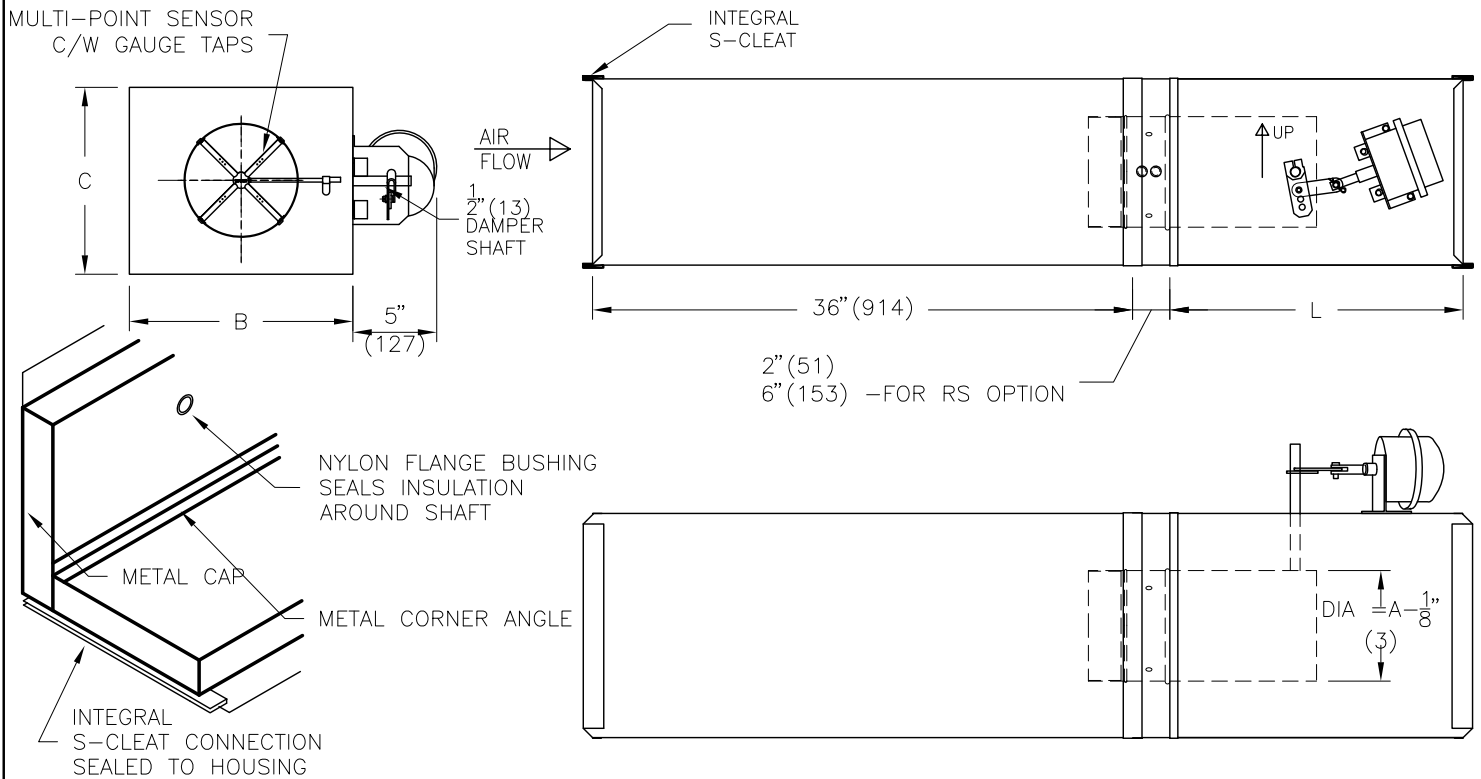
- OTHER PNEUMATIC ACTUATORS SUPPLIED & MOUNTED BY PRICE.
- PNEUMATIC ACTUATOR SUPPLIED BY CONTROL CONTRACTOR & MOUNTED BY PRICE.
- PROTECTIVE CONTROLLER COVER.

LINERS:

- AFPM AFPM1 PM PM1 CRWF
- SM SM1 CRAF CRAF1 FB FB1
- FF FF1 FF50 WFPM
- RS – BOTTOM REMOVABLE SENSOR

ALL METRIC DIMENSIONS () ARE SOFT CONVERTED. IMPERIAL DIMENSIONS ARE CONVERTED TO METRIC AND ROUNDED TO THE NEAREST MILLIMETER.

PROJECT:		PRICE®	
ENGINEER:		BB	SPE8000 SINGLE DUCT TERMINAL VARIABLE VOLUME PNEUMATIC CONTROL QUIET EXHAUST
CUSTOMER:		240252	
SUBMITTAL DATE:	SPEC. SYMBOL:	2010/11/24	



UNIT SIZE	MAX L/S	MAX CFM	S.I. UNITS mm				IMPERIAL UNITS inches				
			INLET/OUTLET		VALVE	LENGTH	INLET/OUTLET		VALVE	LENGTH	
			B	C	A	L	B	C	A	L	
4	106	225	305	203	152	394	12	8	6	15½	
5	165	350									
6	212	450									
7	307	650	305	254	178		12	10	7		
8	378	800									203
9	496	1050									
10	637	1350	356	318	254		14	12½	9		
12	991	2100				10					
14	1225	2600								12	
16	1649	3500	406	381	305	16	15	12			
									508	445	356
			483	457	406	20	18	16			

NOTES:

- INTERNAL INSULATION – RIGID FIBERGLASS 5/8" (16mm) THICK, MIN. 4# DENSITY WITH FOIL FACE WHICH MEETS REQUIREMENTS OF NFPA 90A, UL181, AND ASTM C-665. INSULATION EDGES COVERED WITH METAL ANGLES.
- 22GA. ZINC COATED STEEL HOUSING. MECHANICALLY SEALED AND GASKETED, LEAK RESISTANT CONSTRUCTION.
- INLET & RECTANGULAR DISCHARGE OPENING WITH SLIP AND DRIVE CLEAT DUCT CONNECTION.
- ACTUATOR WILL BE SUPPLIED AS ILLUSTRATED ON RIGHT HAND SIDE UNLESS SPECIFIED OTHERWISE.
- GAUGE TAPS ARE STANDARD.
- PNEUMATIC ACTUATOR SUPPLIED & MOUNTED BY PRICE.
- PRESSURE DEPENDENT.

- CLEAN, DRY, 20 PSI (138 KPa) CONTROL AIR REQUIRED.
- MINIMUM AIR VOLUME IS ZERO (SHUT-OFF).
- SPECIFY THE ACTUATOR SPRING RANGE TO ACCOMMODATE THE THERMOSTAT CONTROL RANGE AND TO SEQUENCE WITH ANY CONTROL COMPONENTS AS SUPPLIED BY OTHERS.

OPTIONS:

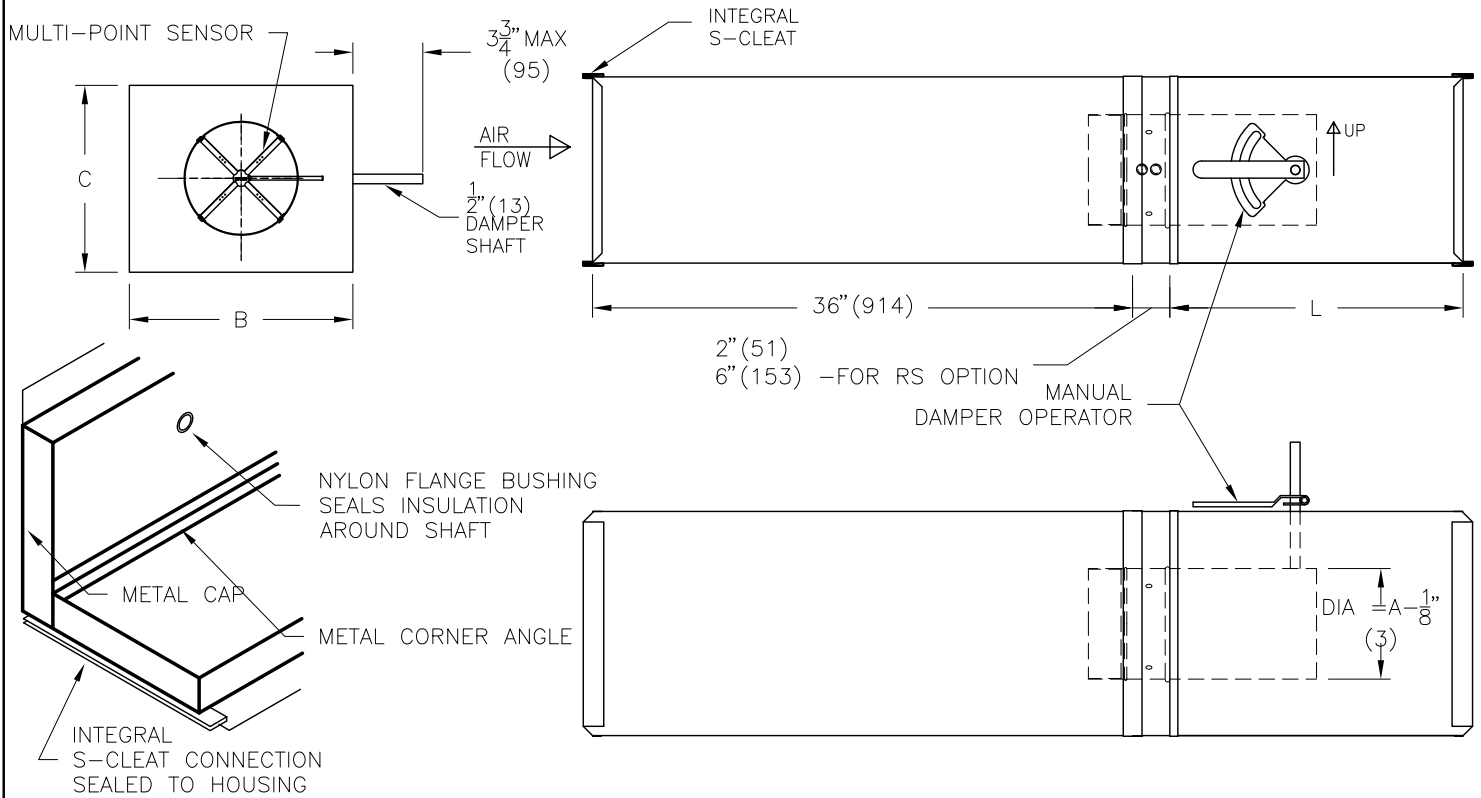
- OTHER PNEUMATIC ACTUATORS SUPPLIED & MOUNTED BY PRICE.
- PNEUMATIC ACTUATOR SUPPLIED BY CONTROL CONTRACTOR & MOUNTED BY PRICE.

LINERS:

- AFPM AFPM1 PM PM1
- SM SM1 CRAF CRAF1 CRWF
- FF FF1 FF50 WFPM FB FB1
- RS – BOTTOM REMOVABLE SENSOR

ALL METRIC DIMENSIONS () ARE SOFT CONVERTED. IMPERIAL DIMENSIONS ARE CONVERTED TO METRIC AND ROUNDED TO THE NEAREST MILLIMETER.

PROJECT:		PRICE®	
ENGINEER:		BG	SPE6000 SINGLE DUCT TERMINAL VARIABLE VOLUME PNEUMATIC CONTROL QUIET EXHAUST
CUSTOMER:		240253	
SUBMITTAL DATE:	SPEC. SYMBOL:	2010/11/24	



UNIT SIZE	MAX L/S	MAX CFM	S.I. UNITS mm				IMPERIAL UNITS inches							
			INLET/OUTLET		VALVE	LENGTH	INLET/OUTLET		VALVE	LENGTH				
			B	C	A	L	B	C	A	L				
4	106	225	305	203	152	394	12	8	6	15 1/2				
5	165	350												
6	212	450												
7	307	650	305	254	178		12	10	7					
8	378	800									203			
9	496	1050										229		
10	637	1350	356	318	254		14	12 1/2	9					
12	991	2100									10			
14	1225	2600										12		
16	1649	3500	406	381	305	16	15	12						
14	1225	2600							508	445	356	20	17 1/2	14
16	1649	3500												
						483				19				

NOTES:

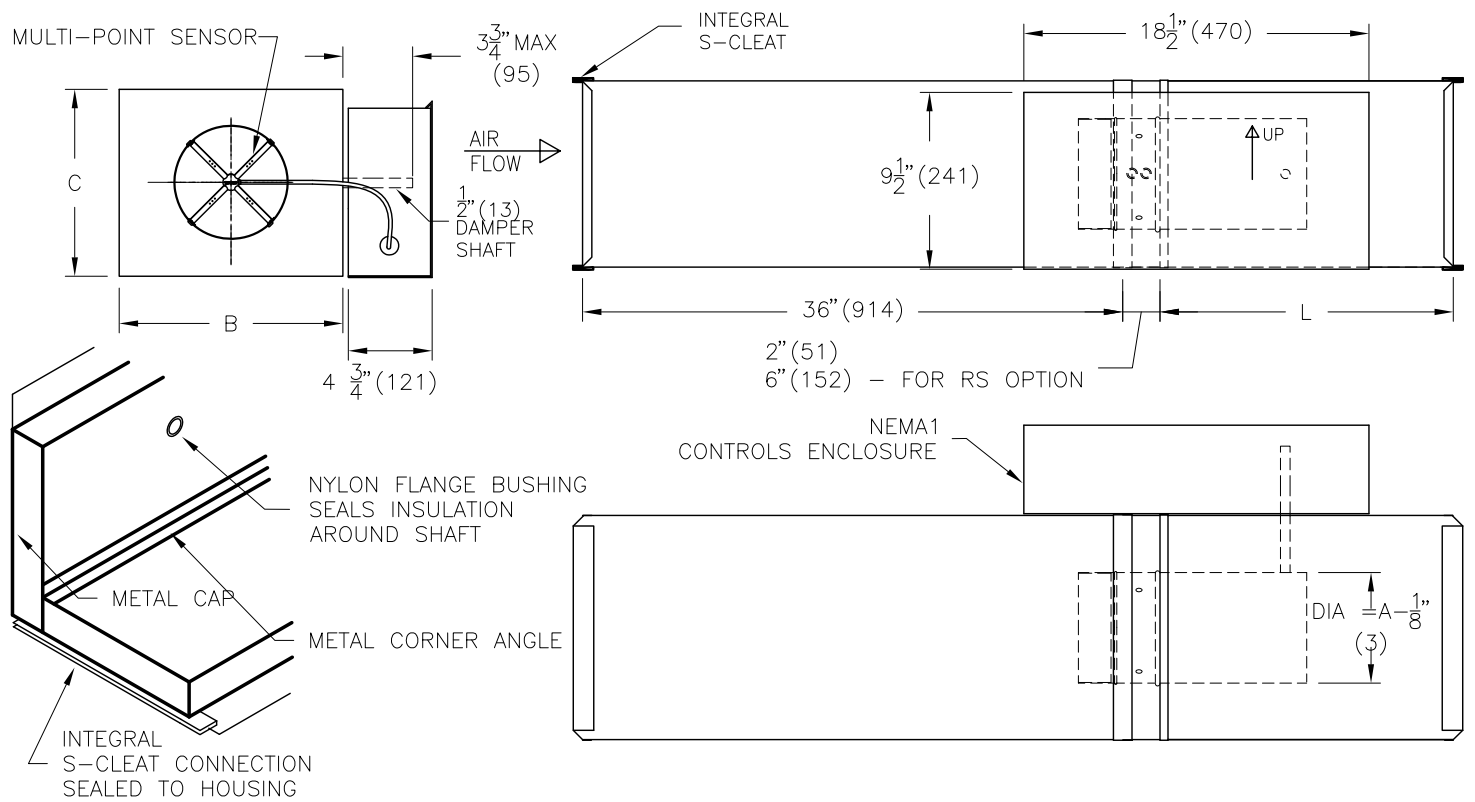
- INTERNAL INSULATION - RIGID FIBERGLASS 5/8" (16mm) THICK, MIN. 4# DENSITY WITH FOIL FACE WHICH MEETS REQUIREMENTS OF NFPA 90A, UL181, AND ASTM C-665. INSULATION EDGES COVERED WITH METAL ANGLES.
- 22GA. ZINC COATED STEEL HOUSING. MECHANICALLY SEALED AND GASKETED, LEAK RESISTANT CONSTRUCTION.
- RECTANGULAR INLET & DISCHARGE OPENING WITH SLIP AND DRIVE CLEAT DUCT CONNECTION.

OPTIONS:

- CONTROLS ENCLOSURE
 - DISCONNECT SWITCH
- LINERS
- AFPM AFPM1 WFPM PM PM1
 - SM SM1 CRAF CRAF1 CRWF
 - FF FF1 FF50 FB FB1
 - RS - BOTTOM REMOVABLE SENSOR

ALL METRIC DIMENSIONS () ARE SOFT CONVERTED. IMPERIAL DIMENSIONS ARE CONVERTED TO METRIC AND ROUNDED TO THE NEAREST MILLIMETER.

PROJECT:		PRICE®	
ENGINEER:		BG	SME6000 SINGLE DUCT TERMINAL MANUAL AIR CONTROL VALVE QUIET EXHAUST
CUSTOMER:		240254	
SUBMITTAL DATE:	SPEC. SYMBOL:	2011/04/19	



UNIT SIZE	MAX L/S	MAX CFM	S.I. UNITS mm				IMPERIAL UNITS inches			
			INLET/OUTLET		VALVE	LENGTH	INLET/OUTLET		VALVE	LENGTH
			B	C	A	L	B	C	A	L
4	106	225	305	203	152	394	12	8	6	15 1/2
5	165	350								
6	212	450								
7	307	650	305	254	178		12	10	7	
8	378	800			203				8	
9	496	1050	356	318	229		14	12 1/2	9	
10	637	1350			254				10	
12	991	2100			305	12				
14	1225	2600	508	445	356	483	20	17 1/2	14	19
16	1649	3500								

NOTES:

- INTERNAL INSULATION – RIGID FIBERGLASS 5/8" (16mm) THICK, MIN. 4# DENSITY WITH FOIL FACE WHICH MEETS REQUIREMENTS OF NFPA 90A, UL181, AND ASTM C-665. INSULATION EDGES COVERED WITH METAL ANGLES.
- 22GA. ZINC COATED STEEL HOUSING. MECHANICALLY SEALED AND GASKETED, LEAK RESISTANT CONSTRUCTION.
- RECTANGULAR INLET & DISCHARGE OPENING WITH SLIP AND DRIVE CLEAT DUCT CONNECTION.
- PRICE CONTROLS FACTORY MOUNTED.
- PRICE THERMOSTAT FIELD MOUNTED.
- MULTI-POINT SENSOR c/w GAUGE TAPS SUPPLIED BY PRICE.

OPTIONS:

- DISCONNECT SWITCH
- LINERS
- AFPM AFPM1 WFPM PM PM1
- SM SM1 CRAF CRAF1 CRWF
- FF FF1 FF50 FB FB1
- RS – BOTTOM REMOVABLE SENSOR

ALL METRIC DIMENSIONS () ARE SOFT CONVERTED. IMPERIAL DIMENSIONS ARE CONVERTED TO METRIC AND ROUNDED TO THE NEAREST MILLIMETER.

PROJECT:		PRICE®	
ENGINEER:		BG	SDE8000 SINGLE DUCT TERMINAL VARIABLE VOLUME PRICE CONTROLS QUIET EXHAUST
CUSTOMER:		240374	
SUBMITTAL DATE:	SPEC. SYMBOL:	2011/04/18	