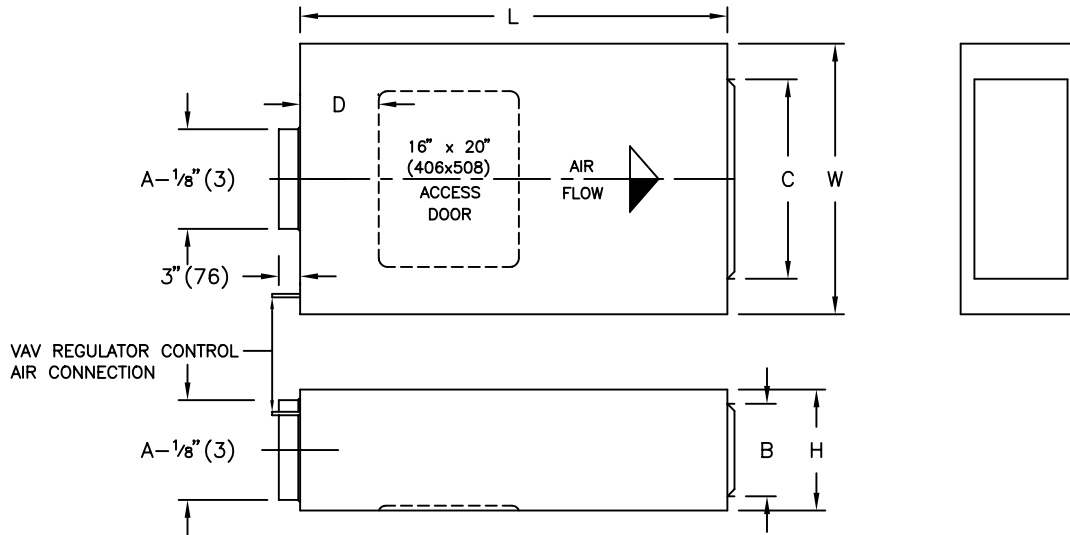


DESIGN 75: SINGLE DUCT HIGH PRESSURE
MODEL SHV - HIGH PRESSURE VARIABLE VOLUME
MODEL SH - HIGH PRESSURE CONSTANT VOLUME



SI UNITS (mm)

UNIT SIZE	W	L	H	A	B	C	D
5-2	635	889	254	127	152	406	184
6-3	635	889	254	152	152	457	184
8-6	813	1194	305	203	229	711	279
10-12	965	1194	356	254	305	711	330
12-14	813	1499	356	305	305	711	356
14-24	965	1499	432	356	381	711	343
16-36	1067	1499	457	406	381	965	356

IMPERIAL UNITS (INCHES)

UNIT SIZE	W	L	H	A	B	C	D
5-2	25	35	10	5	6	16	7 ¹ / ₄
6-3	25	35	10	6	6	18	7 ¹ / ₄
8-6	32	47	12	8	9	28	11
10-12	38	47	14	10	12	28	13
12-14	32	59	14	12	12	28	14
14-24	38	59	17	14	15	28	13 ¹ / ₂
16-36	42	59	18	16	15	38	14

NOTES:

- UNIT CASINGS ARE CONSTRUCTED OF 22 GAUGE GALVANIZED STEEL. SIZE 16-36, 18 GAUGE
- ALL UNITS ARE ACOUSTICALLY AND THERMALLY LINED THROUGHOUT AND HAVE BUILT-IN SOUND BAFFLES
- EACH UNIT IS SHIPPED COMPLETE WITH A SELF-CONTAINED VOLUME REGULATOR(S), FACTORY PRESET FOR THE SPECIFIED AIR VOLUME(S)
- FOR SHV UNITS, PNEUMATIC ACTUATORS FOR THE VARIABLE VOLUME REGULATORS ARE SUPPLIED AND FACTORY INSTALLED BY E.H. PRICE
- FOR SHV UNITS, THE MAXIMUM AND MINIMUM AIR VOLUME SETTINGS ARE FIELD ADJUSTABLE ON THE CALIBRATED AIR VOLUME SCALE ON THE VARIABLE VOLUME REGULATOR(S)
- FOR SH UNITS, THE AIR VOLUME SETTINGS ARE FIELD ADJUSTABLE BY USING A CALIBRATION CHART AND THE ADJUSTING NUT ON THE CONSTANT VOLUME REGULATOR(S)
- REFER TO SUBMITTED TERMINAL UNIT SCHEDULE FOR AIR VOLUMES REQUIRED

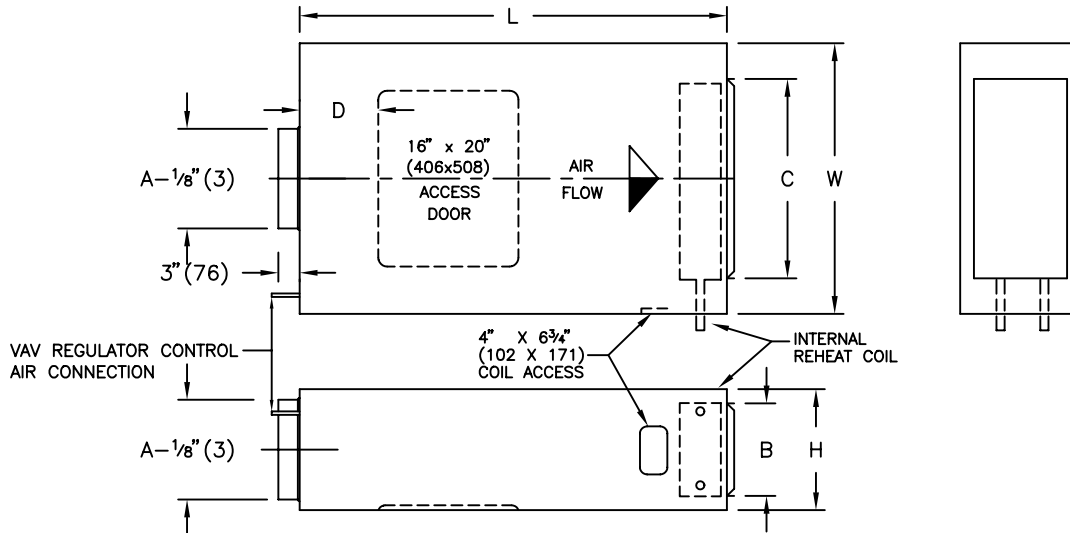
OPTIONS:

- HANGER BRACKETS

ALL METRIC DIMENSIONS () ARE SOFT CONVERTED. IMPERIAL DIMENSIONS ARE CONVERTED TO METRIC AND ROUNDED TO THE NEAREST MILLIMETER.

PROJECT:		PRICE[®]	
ENGINEER:		BG	SHV & SH SINGLE DUCT HIGH PRESSURE TERMINAL UNIT
CUSTOMER:			
SUBMITTAL DATE:		NOV 2001	
SPEC. SYMBOL:			

DESIGN 75: SINGLE DUCT HIGH PRESSURE WATER REHEAT
MODEL SHVR - HIGH PRESSURE VARIABLE VOLUME
MODEL SHR - HIGH PRESSURE CONSTANT VOLUME



SI UNITS (mm)

UNIT SIZE	W	L	H	A	B	C	D	COIL CONNECTION	
								1-ROW	2-ROW
5-2	635	889	254	127	152	406	184	13	13
6-3	635	889	254	152	152	457	184	13	13
8-6	813	1194	305	203	229	711	279	13	13
10-12	965	1194	356	254	305	711	330	13	22
12-14	813	1499	356	305	305	711	356	13	22
14-24	965	1499	432	356	381	711	343	16	22
16-36	1067	1499	457	406	381	965	356	16	22

IMPERIAL UNITS (INCHES)

UNIT SIZE	W	L	H	A	B	C	D	COIL CONNECTION	
								1-ROW	2-ROW
5-2	25	35	10	5	6	16	7 ¹ / ₄	1/2	1/2
6-3	25	35	10	6	6	18	7 ¹ / ₄	1/2	1/2
8-6	32	47	12	8	9	28	11	1/2	1/2
10-12	38	47	14	10	12	28	13	1/2	7/8
12-14	32	59	14	12	12	28	14	1/2	7/8
14-24	38	59	17	14	15	28	13 ¹ / ₂	5/8	7/8
16-36	42	59	18	16	15	38	14	5/8	7/8

NOTES:

- UNIT CASINGS ARE CONSTRUCTED OF 22 GAUGE GALVANIZED STEEL. SIZE 16-36, 18 GAUGE
- ALL UNITS ARE ACOUSTICALLY AND THERMALLY LINED THROUGHOUT AND HAVE BUILT-IN SOUND Baffles
- EACH UNIT IS SHIPPED COMPLETE WITH A SELF-CONTAINED VOLUME REGULATOR(S), FACTORY PRESET FOR THE SPECIFIED AIR VOLUME(S)
- UNITS ARE SUPPLIED WITH AN INTERNALLY MOUNTED REHEAT COIL, ACCESSIBLE THROUGH THE COIL ACCESS DOOR. REHEAT COILS HAVE COPPER TUBES AND ALUMINUM FINNS.
- METHOD OF VENTING REHEAT COIL IS TO BE PROVIDED BY INSTALLING CONTRACTOR.
- HAND OF THE UNIT IS DETERMINED BY THE LOCATION OF THE REHEAT COIL PIPING CONNECTION WHEN THE UNIT IS VIEWED FROM THE INLET END WITH THE ACCESS DOOR ON THE BOTTOM.

- FOR SHVR UNITS, PNEUMATIC ACTUATORS FOR THE VARIABLE VOLUME REGULATORS ARE SUPPLIED AND FACTORY INSTALLED BY E.H. PRICE
- FOR SHVR UNITS, THE MAXIMUM AND MINIMUM AIR VOLUME SETTINGS ARE FIELD ADJUSTABLE ON THE CALIBRATED AIR VOLUME SCALE ON THE VARIABLE VOLUME REGULATOR(S)
- FOR SHR UNITS, THE AIR VOLUME SETTINGS ARE FIELD ADJUSTABLE BY USING A CALIBRATION CHART AND THE ADJUSTING NUT ON THE CONSTANT VOLUME REGULATOR(S)
- REFER TO SUBMITTED TERMINAL UNIT SCHEDULE FOR AIR VOLUMES REQUIRED

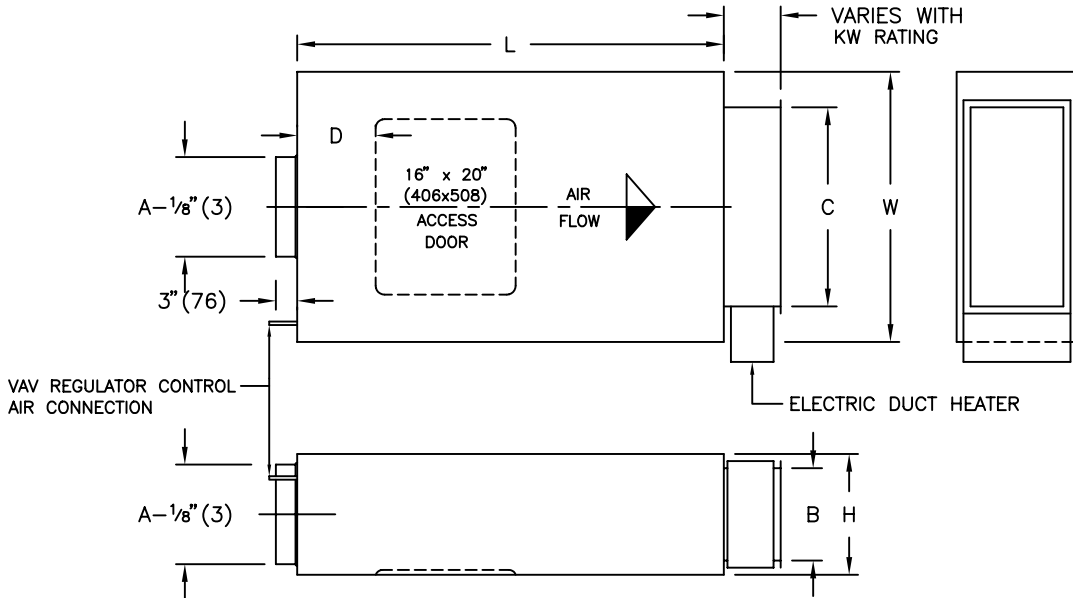
OPTIONS:

HANGER BRACKETS

ALL METRIC DIMENSIONS () ARE SOFT CONVERTED. IMPERIAL DIMENSIONS ARE CONVERTED TO METRIC AND ROUNDED TO THE NEAREST MILLIMETER.

PROJECT:		PRICE[®]	
ENGINEER:		BG	SHVR & SHR SINGLE DUCT HIGH PRESSURE WATER REHEAT
CUSTOMER:		213699	
SUBMITTAL DATE:	SPEC. SYMBOL:	NOV 2001	

**DESIGN 75: SINGLE DUCT HIGH PRESSURE ELECTRIC REHEAT
 MODEL SHVRE - HIGH PRESSURE VARIABLE VOLUME
 MODEL SHRE - HIGH PRESSURE CONSTANT VOLUME**



SI UNITS (mm)

UNIT SIZE	W	L	H	A	B	C	D
5-2	635	889	254	127	152	406	184
6-3	635	889	254	152	152	457	184
8-6	813	1194	305	203	229	711	279
10-12	965	1194	356	254	305	711	330
12-14	813	1499	356	305	305	711	356
14-24	965	1499	432	356	381	711	343
16-36	1067	1499	457	406	381	965	356

IMPERIAL UNITS (INCHES)

UNIT SIZE	W	L	H	A	B	C	D
5-2	25	35	10	5	6	16	7¼
6-3	25	35	10	6	6	18	7¼
8-6	32	47	12	8	9	28	11
10-12	38	47	14	10	12	28	13
12-14	32	59	14	12	12	28	14
14-24	38	59	17	14	15	28	13.5
16-36	42	59	18	16	15	38	14

NOTES:

- UNIT CASINGS ARE CONSTRUCTED OF 22 GAUGE GALVANIZED STEEL. SIZE 16-36, 18 GAUGE
- ALL UNITS ARE ACOUSTICALLY AND THERMALLY LINED THROUGHOUT AND HAVE BUILT-IN SOUND Baffles
- EACH UNIT IS SHIPPED COMPLETE WITH A SELF-CONTAINED VOLUME REGULATOR(S), FACTORY PRESET FOR THE SPECIFIED AIR VOLUME(S)
- EACH UNIT IS SUPPLIED WITH AN EXTERNALLY MOUNTED ELECTRIC REHEAT
- FOR SHVRE UNITS, PNEUMATIC ACTUATORS FOR THE VARIABLE VOLUME REGULATORS ARE SUPPLIED AND FACTORY INSTALLED BY E.H. PRICE
- FOR SHVRE UNITS, THE MAXIMUM AND MINIMUM AIR VOLUME SETTINGS ARE FIELD ADJUSTABLE ON THE CALIBRATED AIR VOLUME SCALE ON THE VARIABLE VOLUME REGULATOR(S)
- FOR SHRE UNITS, THE AIR VOLUME SETTINGS ARE FIELD ADJUSTABLE BY USING A CALIBRATION CHART AND THE ADJUSTING NUT ON THE CONSTANT VOLUME REGULATOR(S)
- REFER TO SUBMITTED TERMINAL UNIT SCHEDULE FOR AIR VOLUMES REQUIRED

OPTIONS:

- HANGER BRACKETS

ALL METRIC DIMENSIONS () ARE SOFT CONVERTED. IMPERIAL DIMENSIONS ARE CONVERTED TO METRIC AND ROUNDED TO THE NEAREST MILLIMETER.

PROJECT:		PRICE®	
ENGINEER:		BG	SHVRE & SHRE SINGLE DUCT HIGH PRESSURE ELECTRIC REHEAT
CUSTOMER:		213700	
SUBMITTAL DATE:	SPEC. SYMBOL:	NOV 2001	