

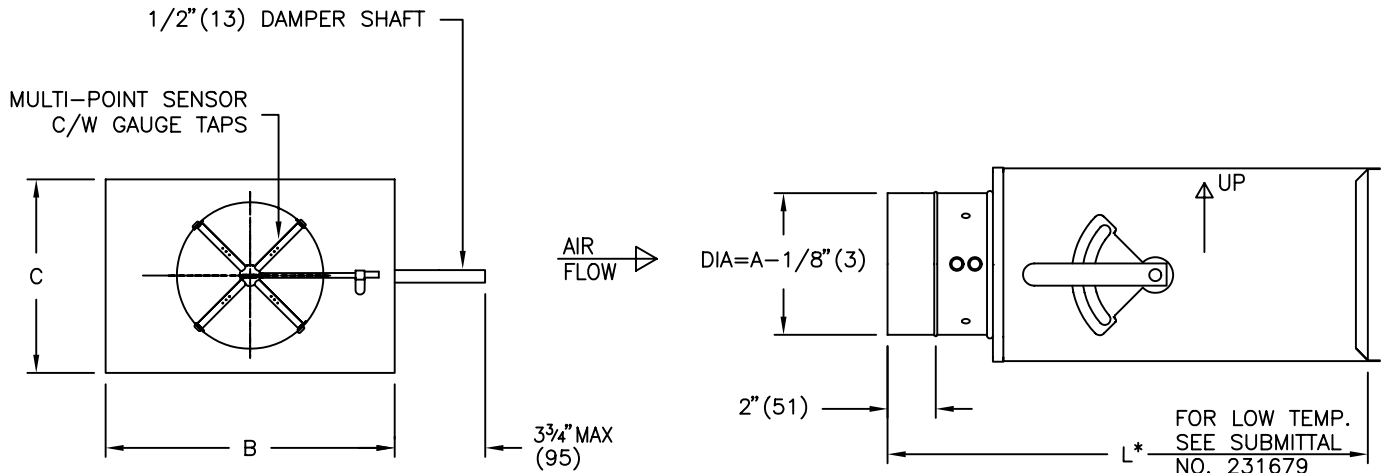
| UNIT SIZE | CFM RANGE | L/S RANGE | S.I. UNITS mm | IMP. UNITS in. |
|-----------|-----------|-----------|---------------|----------------|
| | | | A | A |
| 6 | 0-450 | 0-212 | 152 | 6 |
| 7 | 0-650 | 0-307 | 178 | 7 |
| 8 | 0-800 | 0-378 | 203 | 8 |
| 9 | 0-1050 | 0-496 | 229 | 9 |
| 10 | 0-1350 | 0-637 | 254 | 10 |
| 12 | 0-2100 | 0-991 | 305 | 12 |
| 14 | 0-3200 | 0-1510 | 356 | 14 |
| 16 | 0-4000 | 0-1888 | 406 | 16 |

NOTES

- DUCT 22ga GALVANIZED STEEL MECHANICALLY FASTENED
- OPTIONAL COLLAR ALLOWS FOR EASE OF CONNECTION TO TERMINAL INLET

ALL METRIC DIMENSIONS () ARE SOFT CONVERTED. IMPERIAL DIMENSIONS ARE CONVERTED TO METRIC AND ROUNDED TO THE NEAREST MILLIMETER.

| | | | |
|------------------------|----------------------|---------------------------|--|
| PROJECT: | | PRICE [®] | |
| ENGINEER: | | <i>KL</i> | RMS REMOTE MEASURING STATION |
| CUSTOMER: | | 214818 | |
| SUBMITTAL DATE: | SPEC. SYMBOL: | APR. 1999 | |



| UNIT SIZE | MAX L/S | MAX CFM | S.I. UNITS mm | | | | IMPERIAL UNITS inches | | | |
|-----------|---------|---------|---------------|-----|-------|--------|-----------------------|--------------------------------|-------|--------------------------------|
| | | | OUTLET | | INLET | LENGTH | OUTLET | | INLET | LENGTH |
| | | | B | C | A | L | B | C | A | L |
| 4 | 106 | 225 | 305 | 203 | 102 | 562 | 12 | 8 | 4 | 22 ¹ / ₈ |
| 5 | 165 | 350 | | | 127 | | | | 5 | |
| 6 | 212 | 450 | | | 152 | | | | 6 | |
| 7 | 307 | 650 | 305 | 254 | 178 | 511 | 12 | 10 | 7 | 20 ¹ / ₈ |
| 8 | 378 | 800 | | | 203 | | | | 8 | |
| 9 | 496 | 1050 | | | 229 | | | | 9 | |
| 10 | 637 | 1350 | 356 | 318 | 254 | 600 | 14 | 12 ¹ / ₂ | 10 | 23 ⁵ / ₈ |
| 12 | 991 | 2100 | | | 305 | | | | 12 | |
| 14 | 1416 | 3000 | 508 | 445 | 356 | 600 | 20 | 17 ¹ / ₂ | 14 | 23 ⁵ / ₈ |
| 16 | 1888 | 4000 | 610 | 457 | 406 | | | | 24 | |

NOTES:

- INTERNAL INSULATION – FIBERGLASS 1/2" (13mm) THICK, MIN. 1.5# DENSITY WHICH MEETS REQUIREMENTS OF NFPA 90A AND UL181.
- 22GA. ZINC COATED STEEL HOUSING. MECHANICALLY SEALED AND GASKETED, LEAK RESISTANT CONSTRUCTION.
- RECTANGULAR DISCHARGE OPENING WITH SLIP AND DRIVE CLEAT DUCT CONNECTION.
- GAUGE TAPS ARE STANDARD.

OPTIONS:

LINERS AND CONSTRUCTION OPTIONS:
(REFER TO ATTACHED SUBMITTAL)

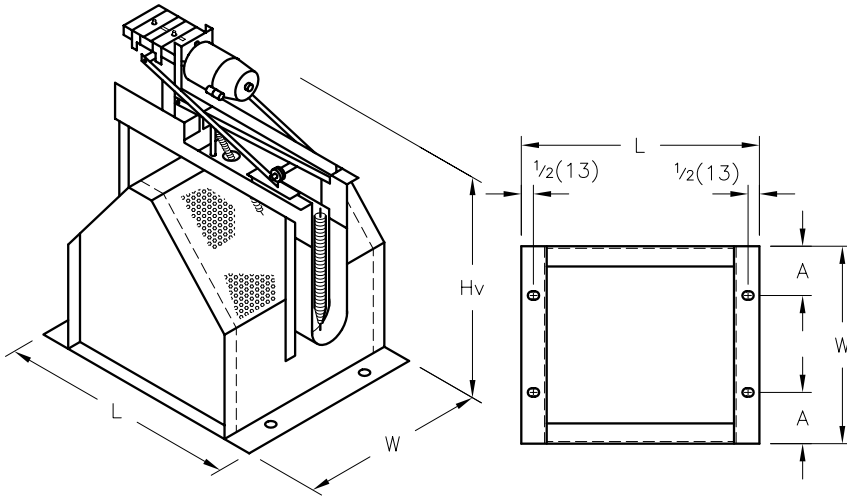
- FF PM SM AF
- WFPM AFPM LL
- LTAF* LTFF*
- CRAF CRWF

ALL METRIC DIMENSIONS () ARE SOFT CONVERTED. IMPERIAL DIMENSIONS ARE CONVERTED TO METRIC AND ROUNDED TO THE NEAREST MILLIMETER.

| | | | |
|------------------------|----------------------|---------------|---|
| PROJECT: | | PRICE® | |
| ENGINEER: | | BG | SMV6000 SINGLE DUCT TERMINAL MANUAL AIR CONTROL VALVE |
| CUSTOMER: | | | |
| SUBMITTAL DATE: | SPEC. SYMBOL: | JAN 2004 | |

DESIGN 75: VAV RETROFIT REGULATOR
VARIABLE VOLUME

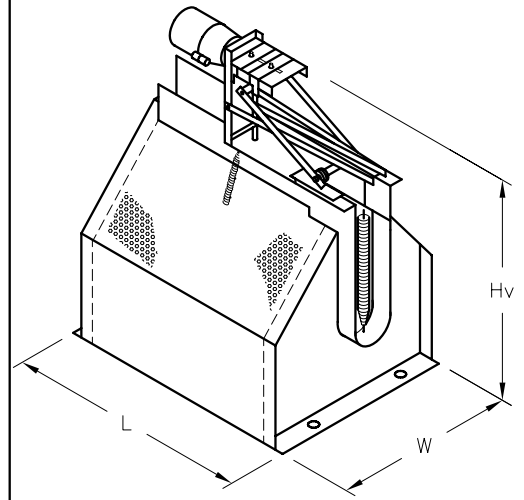
REGULATOR SIZES 2 & 3



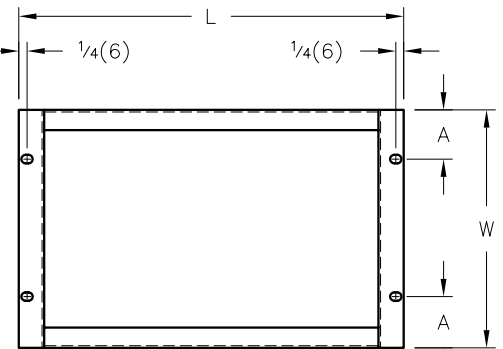
DESIGN 75 VAV REGULATORS
SIZES 2 & 3
DIRECT ACTING ILLUSTRATED

PLAN VIEW OF REGULATOR BASE
SIZES 2 & 3

REGULATOR SIZES 6, 10 & 12



DESIGN 75 VAV REGULATORS
SIZES 6, 10 & 12
REVERSE ACTING ILLUSTRATED



PLAN VIEW OF REGULATOR BASE
SIZES 6, 10 & 12

NOTES:

1. DESIGN 75 VARIABLE VOLUME RETROFIT REGULATORS ARE SHIPPED WITH A PNEUMATIC ACTUATOR, SUPPLIED AND FACTORY INSTALLED BY E.H. PRICE.
2. CONTROL SEQUENCE:
 - DIRECT ACTING, 10-15 PSI ACTUATOR.
 - REVERSE ACTING, 5-10 PSI ACTUATOR.
3. MAXIMUM AIR VOLUME AND MINIMUM AIR VOLUME SETTINGS ARE FACTORY PRESET. BOTH ARE FIELD ADJUSTABLE ON THE CALIBRATED AIR VOLUME SCALE ON THE REGULATOR.
4. FOR SOME SINGLE DUCT UNITS AND SOME DUAL DUCT UNITS, ADAPTOR PLATES MAY BE REQUIRED. SEE SUBMITTAL 213708.
5. FOR SOME DUAL DUCT UNITS (SIZES 5H OR 6H) ADAPTOR STOOLS ARE REQUIRED. SEE SUBMITTAL 213708.
6. REFER TO SUBMITTED RETROFIT TERMINAL UNIT SCHEDULE FOR THE REQUIRED AIR VOLUMES AND ACCESSORIES.

SI UNITS (mm)

| REGULATOR SIZE | HEIGHT Hv | LENGTH L | WIDTH W | A |
|----------------|-----------|----------|---------|----|
| 2 | 327 | 225 | 178 | 22 |
| 3 | 368 | 276 | 178 | 22 |
| 6 | 391 | 346 | 225 | 46 |
| 10 | 457 | 346 | 279 | 59 |
| 12 | 498 | 349 | 327 | 84 |

IMPERIAL UNITS (INCHES)

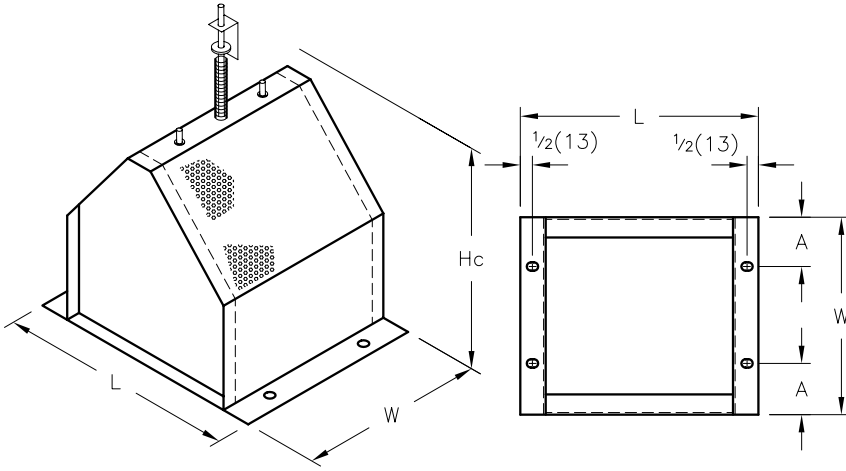
| REGULATOR SIZE | HEIGHT Hv | LENGTH L | WIDTH W | A |
|----------------|--------------------------------|--------------------------------|--------------------------------|---------------------------------|
| 2 | 12 ⁷ / ₈ | 8 ⁷ / ₈ | 7 | ⁷ / ₈ |
| 3 | 14 ¹ / ₂ | 10 ⁷ / ₈ | 7 | ⁷ / ₈ |
| 6 | 15 ³ / ₈ | 13 ⁵ / ₈ | 8 ⁷ / ₈ | 1 ¹³ / ₁₆ |
| 10 | 18 | 13 ⁵ / ₈ | 11 | 2 ³ / ₈ |
| 12 | 19 ⁵ / ₈ | 13 ³ / ₄ | 12 ⁷ / ₈ | 3 ⁵ / ₁₆ |

ALL METRIC DIMENSIONS () ARE SOFT CONVERTED. IMPERIAL DIMENSIONS ARE CONVERTED TO METRIC AND ROUNDED TO THE NEAREST MILLIMETER.

| | | | |
|------------------------|----------------------|---------------------------|---|
| PROJECT: | | PRICE [®] | |
| ENGINEER: | | <i>KL</i> | DESIGN 75 VAV RETROFIT REGULATOR |
| CUSTOMER: | | 213706 | |
| SUBMITTAL DATE: | SPEC. SYMBOL: | MAY 97 | |

**DESIGN 75: CV RETROFIT REGULATOR
CONSTANT VOLUME**

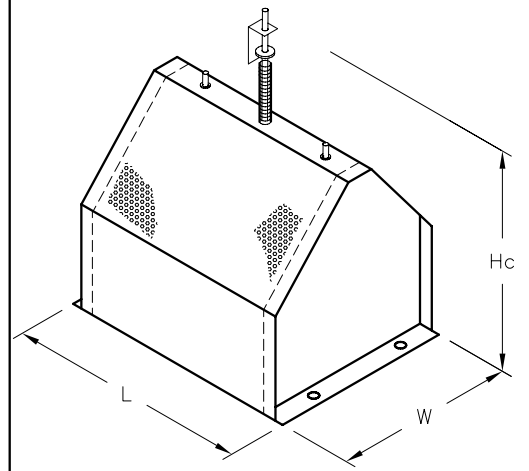
REGULATOR SIZES 2 & 3



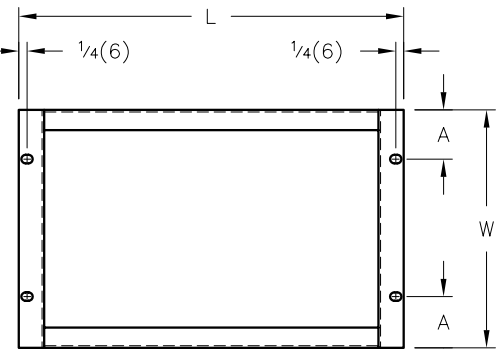
DESIGN 75 CV REGULATOR
SIZES 2 & 3

PLAN VIEW OF REGULATOR BASE
SIZES 2 & 3

REGULATOR SIZES 6, 10 & 12



DESIGN 75 CV REGULATOR
SIZES 6, 10 & 12



PLAN VIEW OF REGULATOR BASE
SIZES 6, 10 & 12

NOTES:

1. DESIGN 75 CONSTANT VOLUME RETROFIT REGULATOR AIR VOLUMES ARE FACTORY PRESET. THE SETTING IS FIELD ADJUSTABLE ON THE CALIBRATED AIR VOLUME SCALE.
2. FOR SOME SINGLE DUCT UNITS AND SOME DUAL DUCT UNITS, ADAPTOR PLATES MAY BE REQUIRED. SEE SUBMITTAL 213708.
3. FOR SOME DUAL DUCT UNITS (SIZES 5H OR 6H) ADAPTOR STOOLS ARE REQUIRED. SEE SUBMITTAL 213708.
4. REFER TO SUBMITTED RETROFIT TERMINAL UNIT SCHEDULE FOR THE REQUIRED AIR VOLUMES AND ACCESSORIES.

SI UNITS (mm)

| REGULATOR SIZE | HEIGHT Hc | LENGTH L | WIDTH W | A |
|----------------|-----------|----------|---------|----|
| 2 | 286 | 225 | 178 | 22 |
| 3 | 321 | 276 | 178 | 22 |
| 6 | 338 | 346 | 225 | 46 |
| 10 | 403 | 346 | 279 | 59 |
| 12 | 445 | 349 | 327 | 84 |

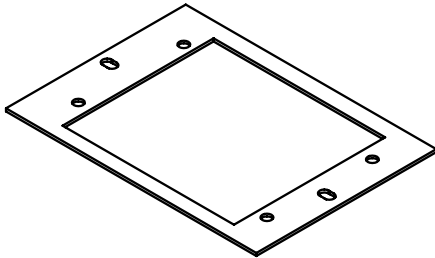
IMPERIAL UNITS (INCHES)

| REGULATOR SIZE | HEIGHT Hc | LENGTH L | WIDTH W | A |
|----------------|---------------------------------|--------------------------------|--------------------------------|---------------------------------|
| 2 | 11 ¹ / ₄ | 8 ⁷ / ₈ | 7 | 7 ⁷ / ₈ |
| 3 | 12 ⁵ / ₈ | 10 ⁷ / ₈ | 7 | 7 ⁷ / ₈ |
| 6 | 13 ⁵ / ₁₆ | 13 ⁵ / ₈ | 8 ⁷ / ₈ | 11 ³ / ₁₆ |
| 10 | 15 ⁷ / ₈ | 13 ⁵ / ₈ | 11 | 2 ³ / ₈ |
| 12 | 17 ¹ / ₂ | 13 ³ / ₄ | 12 ⁷ / ₈ | 3 ⁵ / ₁₆ |

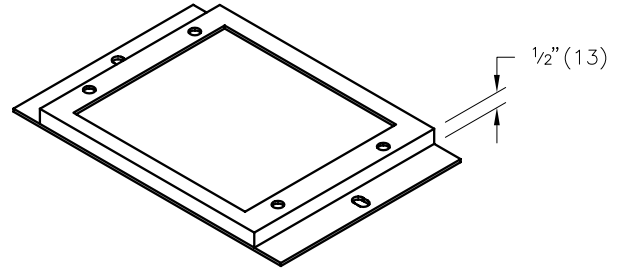
ALL METRIC DIMENSIONS () ARE SOFT CONVERTED. IMPERIAL DIMENSIONS ARE CONVERTED TO METRIC AND ROUNDED TO THE NEAREST MILLIMETER.

| | | | |
|------------------------|----------------------|---------------------------|--|
| PROJECT: | | PRICE [®] | |
| ENGINEER: | | <i>KL</i> | DESIGN 75 CV RETROFIT REGULATOR |
| CUSTOMER: | | 213707 | |
| SUBMITTAL DATE: | SPEC. SYMBOL: | MAY 97 | |

**DESIGN 75: ADAPTOR PLATES/ADAPTOR STOOLS
FOR RETROFIT APPLICATIONS**



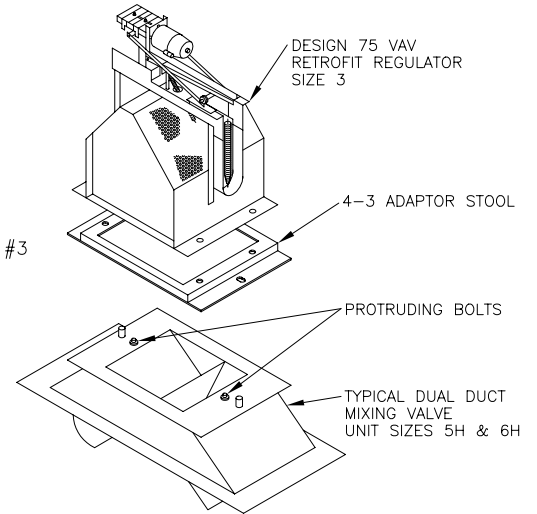
TYPICAL ADAPTOR PLATE



TYPICAL ADAPTOR STOOL

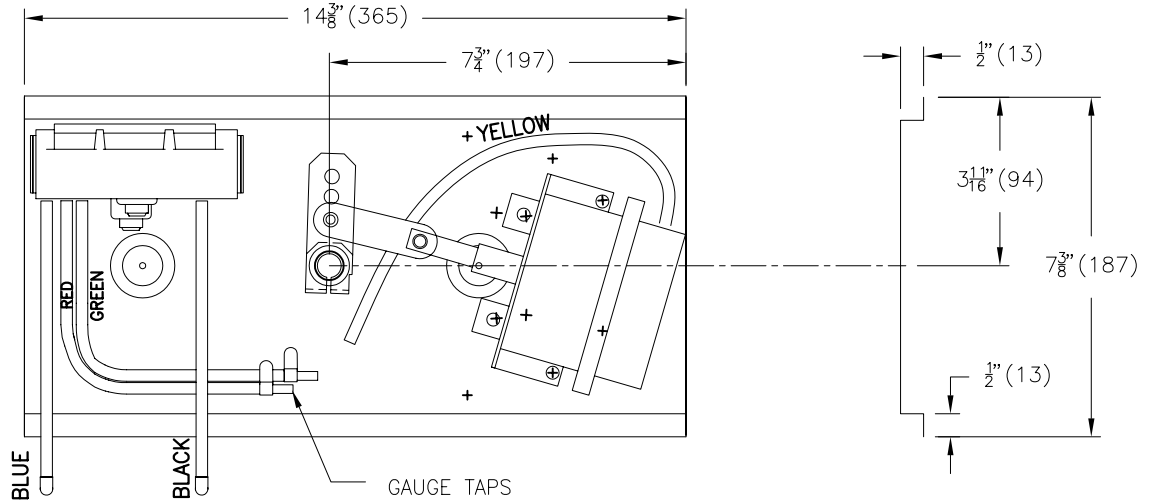
NOTES:

1. ADAPTOR PLATES OR ADAPTOR STOOLS ARE REQUIRED FOR ALL APPLICATIONS WHERE THE RETROFIT REGULATOR SIZE IS SMALLER THAN THE SIZE OF THE ORIGINAL REGULATOR.
2. ADAPTOR PLATES ARE FLAT, DIMENSIONED TO ACCOMMODATE THE INSTALLATION OF A SMALLER SIZED REGULATOR. FOR MOST APPLICATIONS, THE ADAPTOR PLATE IS SATISFACTORY.
3. ADAPTOR STOOLS ARE REQUIRED WHEN RETROFITTING DUAL DUCT UNIT SIZES 5H OR 6H. ON THESE SPECIFIC DUAL DUCT UNITS, TWO BOLTS PROTRUDE FROM THE REGULATOR SEAT, INTERFERING WITH THE INSTALLATION OF A #2 OR A #3 RETROFIT REGULATOR. THE ADAPTOR STOOL PROVIDES A 1/2" (13) CLEARANCE SPACE TO AVOID THE INTERFERENCE. THIS IS ILLUSTRATED IN THE EXPLODED DIAGRAM AT THE RIGHT.
4. REFER TO SUBMITTED RETROFIT TERMINAL UNIT SCHEDULE OF UNITS WHERE ADAPTOR PLATES AND/OR ADAPTOR STOOLS ARE LISTED AS ACCESSORIES.



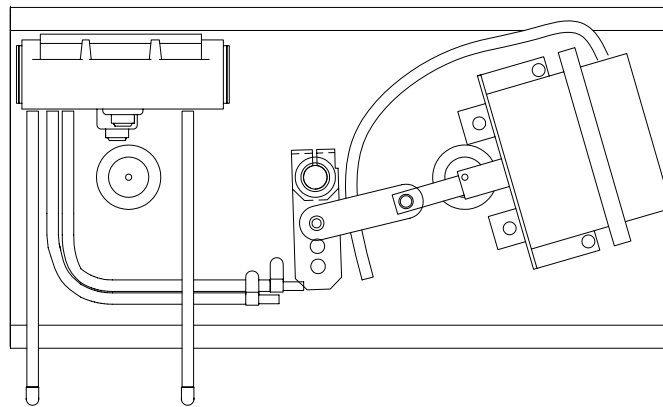
ALL METRIC DIMENSIONS () ARE SOFT CONVERTED. IMPERIAL DIMENSIONS ARE CONVERTED TO METRIC AND ROUNDED TO THE NEAREST MILLIMETER.

| | | | |
|------------------------|----------------------|---------------------------|--|
| PROJECT: | | PRICE [®] | |
| ENGINEER: | | <i>KL</i> | DESIGN 75 ADAPTOR PLATES ADAPTOR STOOLS FOR RETROFIT |
| CUSTOMER: | | 213708 | |
| SUBMITTAL DATE: | SPEC. SYMBOL: | MAY 97 | |



PKIT NO

DAMPER NORMALLY OPEN



PKIT NC

DAMPER NORMALLY CLOSED

NOTES:

- 22GA. GALV. MOUNTING PLATE
- PRICE PNEUMATIC ACTUATOR MCP-80313102 5-10 PSI
- PRICE CP101 PNEUMATIC CONTROLLER
- PNEUMATIC TUBING & GAUGE TAPS INCLUDED

ALL METRIC DIMENSIONS () ARE SOFT CONVERTED. IMPERIAL DIMENSIONS ARE CONVERTED TO METRIC AND ROUNDED TO THE NEAREST MILLIMETER.

| | | | |
|------------------------|----------------------|---|--------|
| PROJECT: | | PRICE [®] | |
| ENGINEER: | | PKIT PNEUMATIC KIT FOR TERMINALS | 245703 |
| CUSTOMER: | | | |
| SUBMITTAL DATE: | SPEC. SYMBOL: | 02/23/2006 | |