

**SI UNITS (mm)**

UNIT SIZE	AIR FLOW L/S	W	L	H	INLET		OUTLET	
					A	B	C	D
6	189	432	432	254	152	235	229	254
8	330				203			
10	519	635	635	356	254	295	330	356
12	755				305			
14	991	737	737	406	356	362	381	406
16	1321	838	838	457	406	384	432	457

**IMPERIAL UNITS (inches)**

UNIT SIZE	AIR FLOW CFM	W	L	H	INLET		OUTLET	
					A	B	C	D
6	400	17	17	10	6	9 1/4	9	10
8	700				8			
10	1100	25	25	14	10	11 1/8	13	14
12	1600				12			
14	2100	29	29	16	14	14 1/4	15	16
16	2800	33	33	18	16	15 1/8	17	18

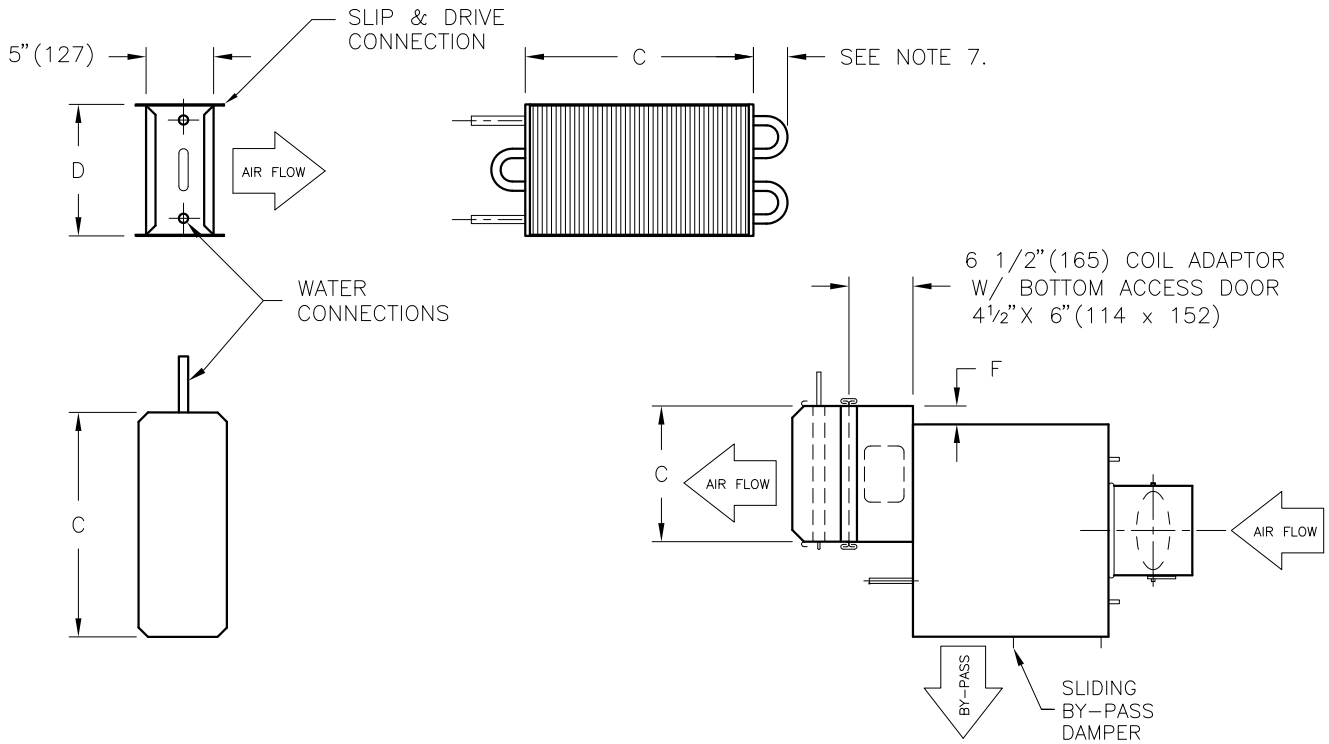
**Notes:**

- UNIT CASING IS CONSTRUCTED OF 22 ga. ZINC COATED STEEL.
- INTERNAL INSULATION – FIBERGLASS 1/2" (13) THICK, MIN. 1.5# DENSITY WHICH MEETS REQUIREMENTS OF NFPA 90A AND UL181.
- MANUAL BALANCING DAMPERS ARE LOCATED IN THE INLET COLLAR AND AT THE BY-PASS OUTLET.
- REFER TO DRAWINGS 220003 AND 220018 FOR OPTIONAL ACCESSORIES.
- MOUNTING OF ELECTRIC REHEAT COIL DIRECTLY AT OUTLET OF LGB UNIT IS NOT RECOMMENDED DUE TO UNEVEN AIR FLOW. ELECTRIC COIL SHOULD BE MOUNTED IN SUPPLY DUCT AT LEAST 48" (1219) DOWNSTREAM OF LGB UNIT.
- WHEN ACTUATORS ARE SUPPLIED BY OTHERS MINIMUM AIR VOLUME STOP MUST BE INTEGRAL WITH THE ACTUATOR.
- TO REVERSE THE OUTLET SIDE, SIMPLY FLIP THE UNIT TOP TO BOTTOM.



ALL METRIC DIMENSIONS ( ) ARE SOFT CONVERTED. IMPERIAL DIMENSIONS ARE CONVERTED TO METRIC AND ROUNDED TO THE NEAREST MILLIMETER.

<b>PROJECT:</b>		<b>PRICE</b> <sup>®</sup>	
<b>ENGINEER:</b>		<b>BG</b>	<b>LGB</b> LOW PRESSURE BY-PASS
<b>CUSTOMER:</b>		220000	
<b>SUBMITTAL DATE:</b>	<b>SPEC. SYMBOL:</b>	OCT 07	



**SI UNITS (mm)**

UNIT SIZE	AIR FLOW L/S	C	D	F	COIL CONNECTIONS	
					1 ROW	2 ROW
6	189	305	254	68	13	22
8	330					
10	519	356	318	17	22	22
12	755					
14	991	406	381	17	22	22
16	1321	457	445	68	22	22

**IMPERIAL UNITS (inches)**

UNIT SIZE	AIR FLOW L/S	C	D	F	COIL CONNECTIONS		SPV UNIT COIL SIZE
					1 ROW	2 ROW	
6	400	12"	10"	2 <sup>11</sup> / <sub>16</sub> "	1/2"	7/8"	7, 8
8	700						
10	1100	14"	12 <sup>1</sup> / <sub>2</sub> "	1 <sup>1</sup> / <sub>16</sub> "	7/8"	7/8"	9, 10
12	1600						
14	2100	16"	15"	1 <sup>1</sup> / <sub>16</sub> "	7/8"	7/8"	12
16	2800	20"	17 <sup>1</sup> / <sub>2</sub> "	2 <sup>11</sup> / <sub>16</sub> "	7/8"	7/8"	14

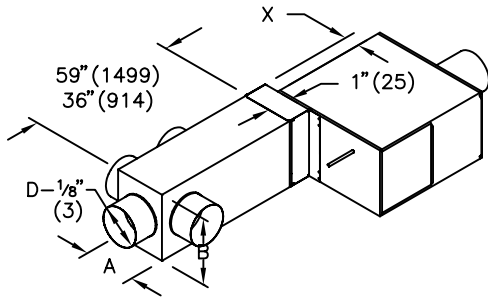
**NOTES:**

- 1) UNIT CASING IS CONSTRUCTED OF 22 ga. ZINC COATED STEEL.
- 2) HOT WATER COILS HAVE COPPER TUBES AND ALUMINUM FINNS WITH O.D. SWEAT CONNECTIONS.
- 3) ACCESS TO THE UPSTREAM SIDE OF THE REHEAT COIL IS PROVIDED THROUGH A 4 1/2" X 6" (114 x 152) ACCESS DOOR ON BOTTOM OF COIL ADAPTOR.
- 4) RECTANGULAR DISCHARGE OPENINGS HAVE SLIP AND DRIVE CLEAT DUCT CONNECTIONS.
- 5) METHOD OF VENTING REHEAT COIL IS TO BE PROVIDED BY THE INSTALLING CONTRACTOR.
- 6) HAND OF WATER COIL TO BE DETERMINED BY THE LOCATION OF THE COIL CONNECTIONS WHEN VIEWED FROM THE INLET WITH THE ACCESS DOOR ON THE BOTTOM.(R.H. SHOWN)
- 7) ALLOW 1 1/2" (38) MINIMUM CLEARANCE FOR INSTALLATION ON THIS SIDE.
- 8) WATER COILS ARE FACTORY INSTALLED.

ALL METRIC DIMENSIONS ( ) ARE SOFT CONVERTED. IMPERIAL DIMENSIONS ARE CONVERTED TO METRIC AND ROUNDED TO THE NEAREST MILLIMETER.

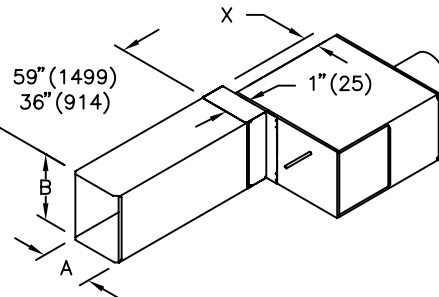
<b>PROJECT:</b>		<b>PRICE®</b>	
<b>ENGINEER:</b>		<b>BG</b>	<b>LGB</b> LOW PRESSURE BY-PASS WATER COILS
<b>CUSTOMER:</b>		220018	
<b>SUBMITTAL DATE:</b>	<b>SPEC. SYMBOL:</b>	2011/09/16	

**LGB w/MOA**  
3 Ft. or 5 Ft.



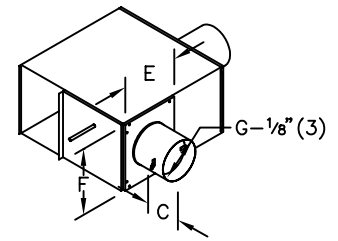
\*SHIPPED LOOSE FOR FIELD MOUNTING

**LGB w/ATTENUATOR**  
3 Ft. or 5 Ft.



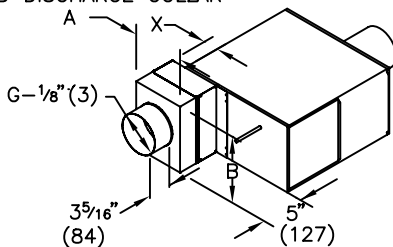
\*SHIPPED LOOSE FOR FIELD MOUNTING

**LGB w/RBPC**  
ROUND BY-PASS COLLAR  
c/w BALANCING DAMPER



\*FACTORY INSTALLED.

**LGB w/RDC**  
ROUND DISCHARGE COLLAR



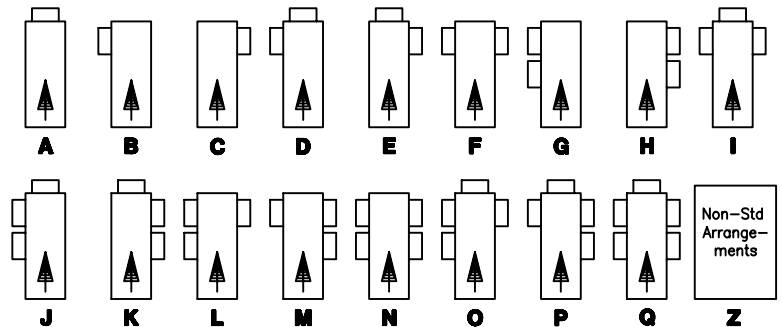
\*FACTORY INSTALLED.

**IMPERIAL UNITS / SI UNITS (mm)**

UNIT SIZE	A	B	C	MOA OUTLET D	E	F	G	X
				MAX.				
6							6	
8	12" (305)	10" (254)	9 1/4" (235)	8" (203)	9" (229)	10" (254)	8	2 1/16" (68)
10							10	
12	14" (356)	12 1/2" (317)	11 5/8" (295)	10" (254)	13" (330)	14" (356)	12	1 1/16" (17)
14	16" (406)	15" (381)	14 1/4" (362)	NOT AVAILABLE	15" (381)	16" (406)	14	1 1/16" (17)
16	20" (508)	17 1/2" (444)	15 1/8" (384)	NOT AVAILABLE	17" (432)	18" (457)	16	2 1/16" (68)

**MOA - STANDARD OUTLET ARRANGEMENTS**

1. ONLY ONE OUTLET SIZE TO BE SPECIFIED PER M.O.A. NO MIXING OF OUTLET SIZES ON THE SAME UNIT.
2. ALL ROUND OUTLETS C/W MANUAL DAMPERS.
3. DENOTES AIR FLOW DIRECTION.
4. FOR SPECIAL OUTLET SIZES & ARRANGEMENTS, CONSULT YOUR PRICE SALES REPRESENTATIVE.



**NOTES:**

- 1) ALL ACCESSORIES ARE CONSTRUCTED OF 22 ga. ZINC COATED STEEL.
- 2) INTERNAL INSULATION - FIBERGLASS 1/2" (13) THICK, MIN. 1.5# DENSITY WHICH MEETS REQUIREMENTS OF NFPA90A AND UL181.
- 3) MAXIMUM QUANTITY OF OUTLETS PER MOA IS FIVE (5).
- 4) SPECIFY SIZES OF MOA OUTLETS AS OUTLINED IN MOA NOTES ABOVE.
- 5) MOA, ATTENUATOR AND ROUND DISCHARGE COLLAR ARE MOUNTED TO LGB UNIT WITH A STEPPED FLANGED COLLAR.

ALL METRIC DIMENSIONS ( ) ARE SOFT CONVERTED. IMPERIAL DIMENSIONS ARE CONVERTED TO METRIC AND ROUNDED TO THE NEAREST MILLIMETER.

<b>PROJECT:</b>		<b>PRICE<sup>®</sup></b>	
<b>ENGINEER:</b>		<b>BG</b>	<b>LGB</b> STANDARD ACCESSORIES
<b>CUSTOMER:</b>			
<b>SUBMITTAL DATE:</b>	<b>SPEC. SYMBOL:</b>	DEC 2003	