

UNIT SIZE	MAX CFM	MAX L/S	IMPERIAL UNITS in.									S.I. UNITS mm								
			INLET			RETURN AIR			DISCHARGE			INLET			RETURN AIR			DISCHARGE		
			A	B	C	D	E	F	L	W	H	A	B	C	D	E	F	L	W	H
6	450	212	5 7/8	14	8 1/2	5 1/2	15	7	42 3/4	18 1/2	10 1/2	149	356	216	140	381	178	1086	470	267
8	800	378	7 7/8	14	8 1/2	5 1/2	23	7	42 3/4	26	10 1/2	200	356	216	140	584	178	1086	660	267
10	1350	637	9 7/8	20	10	5 1/2	31	8	47 1/4	34 1/2	12 1/2	251	508	254	140	787	203	1200	876	318
12	2100	991	11 7/8	21	14	6 1/2	33	12	59 1/4	40 1/2	16 1/2	302	533	356	165	838	305	1505	1029	419
14	3000	1416	13 7/8	24	14	6 1/2	37	12	59 1/4	40 1/2	16 1/2	352	610	356	165	940	305	1505	1029	419

**NOTES:**

- INTERNAL INSULATION MEETS REQUIREMENTS OF NFPA 90A & UL181.
- 22 GA. ZINC COATED STEEL HOUSING MECHANICALLY SEALED AND GASKETTED, LEAK RESISTANT CONSTRUCTION.
- CONTROLS & INDUCTION DAMPER MAY BE LEFT HAND OR RIGHT HAND ARRANGEMENT.
- GAUGE TAPS ARE STANDARD.
- CONTROLS EXTERNALLY MOUNTED.
- CLEAN, DRY 20 PSI(138 KPa) CONTROL AIR REQUIRED.

**OPTION**

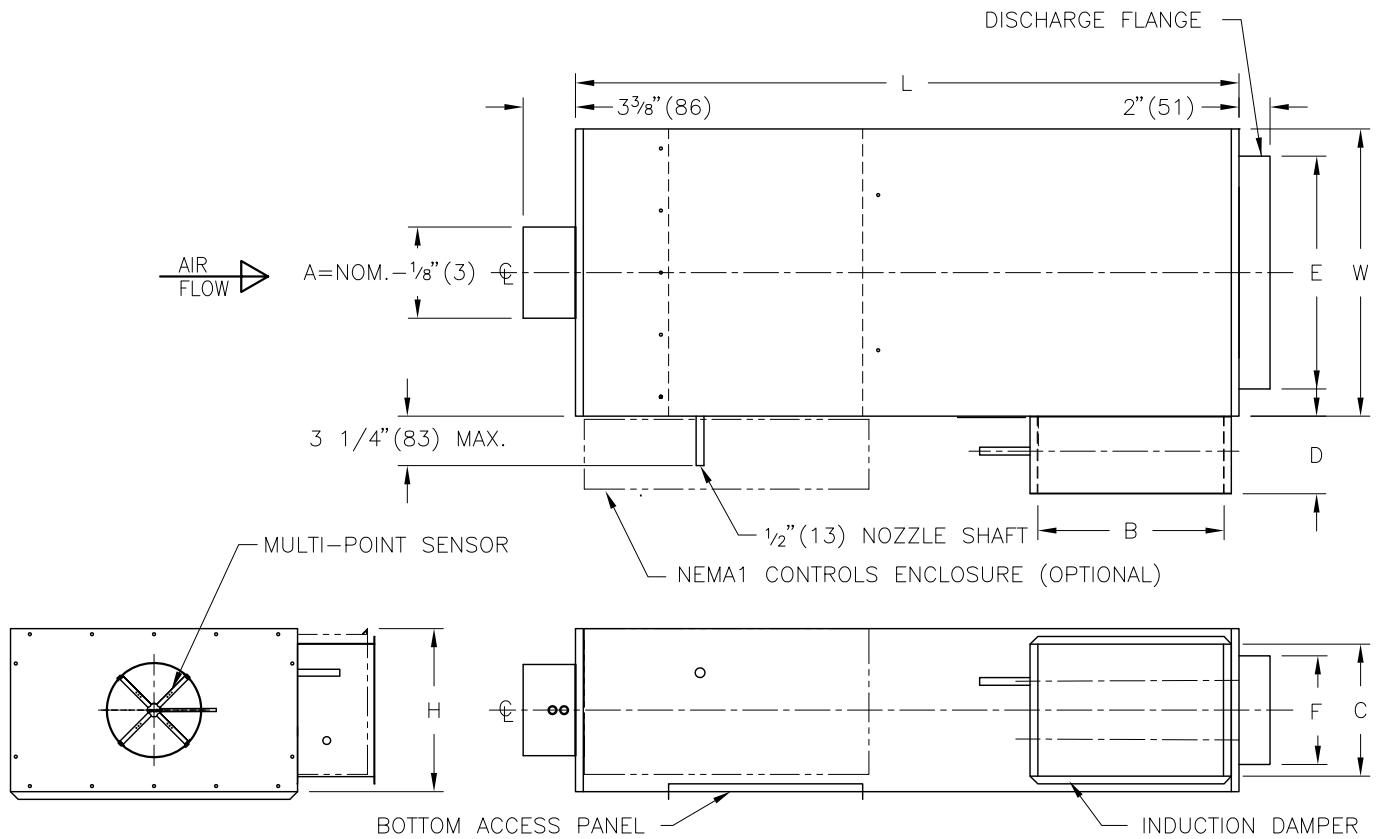
- CONTROLLER COVER
- FB LINER
- HANGER BRACKETS (SHIPPED LOOSE)



ALL METRIC DIMENSIONS ( ) ARE SOFT CONVERTED. IMPERIAL DIMENSIONS ARE CONVERTED TO METRIC AND ROUNDED TO THE NEAREST MILLIMETER.

<b>PROJECT:</b>		<b>PRICE®</b>	
<b>ENGINEER:</b>			
<b>CUSTOMER:</b>		<b>BG</b>	<b>IPV8000</b> INDUCTION TERMINAL PNEUMATIC CONTROL PRESSURE INDEPENDENT
<b>SUBMITTAL DATE:</b>		224891	
<b>SPEC. SYMBOL:</b>		2010/02/18	





UNIT SIZE	MAX CFM	MAX L/S	IMPERIAL UNITS in.									S.I. UNITS mm								
			INLET			RETURN AIR			DISCHARGE			INLET			RETURN AIR			DISCHARGE		
			A	B	C	D	E	F	L	W	H	A	B	C	D	E	F	L	W	H
6	450	212	5 <sup>7</sup> / <sub>8</sub>	14	8 <sup>1</sup> / <sub>2</sub>	5 <sup>1</sup> / <sub>2</sub>	15	7	42 <sup>3</sup> / <sub>4</sub>	18 <sup>1</sup> / <sub>2</sub>	10 <sup>1</sup> / <sub>2</sub>	149	356	216	140	381	178	1086	470	267
8	800	378	7 <sup>7</sup> / <sub>8</sub>	14	8 <sup>1</sup> / <sub>2</sub>	5 <sup>1</sup> / <sub>2</sub>	23	7	42 <sup>3</sup> / <sub>4</sub>	26	10 <sup>1</sup> / <sub>2</sub>	200	356	216	140	584	178	1086	660	267
10	1350	637	9 <sup>7</sup> / <sub>8</sub>	20	10	5 <sup>1</sup> / <sub>2</sub>	31	8	47 <sup>1</sup> / <sub>4</sub>	34 <sup>1</sup> / <sub>2</sub>	12 <sup>1</sup> / <sub>2</sub>	251	508	254	140	787	203	1200	876	318
12	2100	991	11 <sup>7</sup> / <sub>8</sub>	21	14	6 <sup>1</sup> / <sub>2</sub>	33	12	59 <sup>1</sup> / <sub>4</sub>	40 <sup>1</sup> / <sub>2</sub>	16 <sup>1</sup> / <sub>2</sub>	302	533	356	165	838	305	1505	1029	419
14	3000	1416	13 <sup>7</sup> / <sub>8</sub>	24	14	6 <sup>1</sup> / <sub>2</sub>	37	12	59 <sup>1</sup> / <sub>4</sub>	40 <sup>1</sup> / <sub>2</sub>	16 <sup>1</sup> / <sub>2</sub>	352	610	356	165	940	305	1505	1029	419

**NOTES:**

- INTERNAL INSULATION MEETS REQUIREMENTS OF NFPA 90A & UL181.
- 22 GA. ZINC COATED STEEL HOUSING MECHANICALLY SEALED AND GASKETTED, LEAK RESISTANT CONSTRUCTION.
- CONTROLS & INDUCTION DAMPER MAY BE LEFT HAND OR RIGHT HAND ARRANGEMENT.
- DIGITAL CONTROLS SUPPLIED BY CONTROL CONTRACTOR. CONSULT CUSTOMER SERVICE FOR APPROVED COMPONENTS.
- CONTROLS EXTERNALLY MOUNTED.

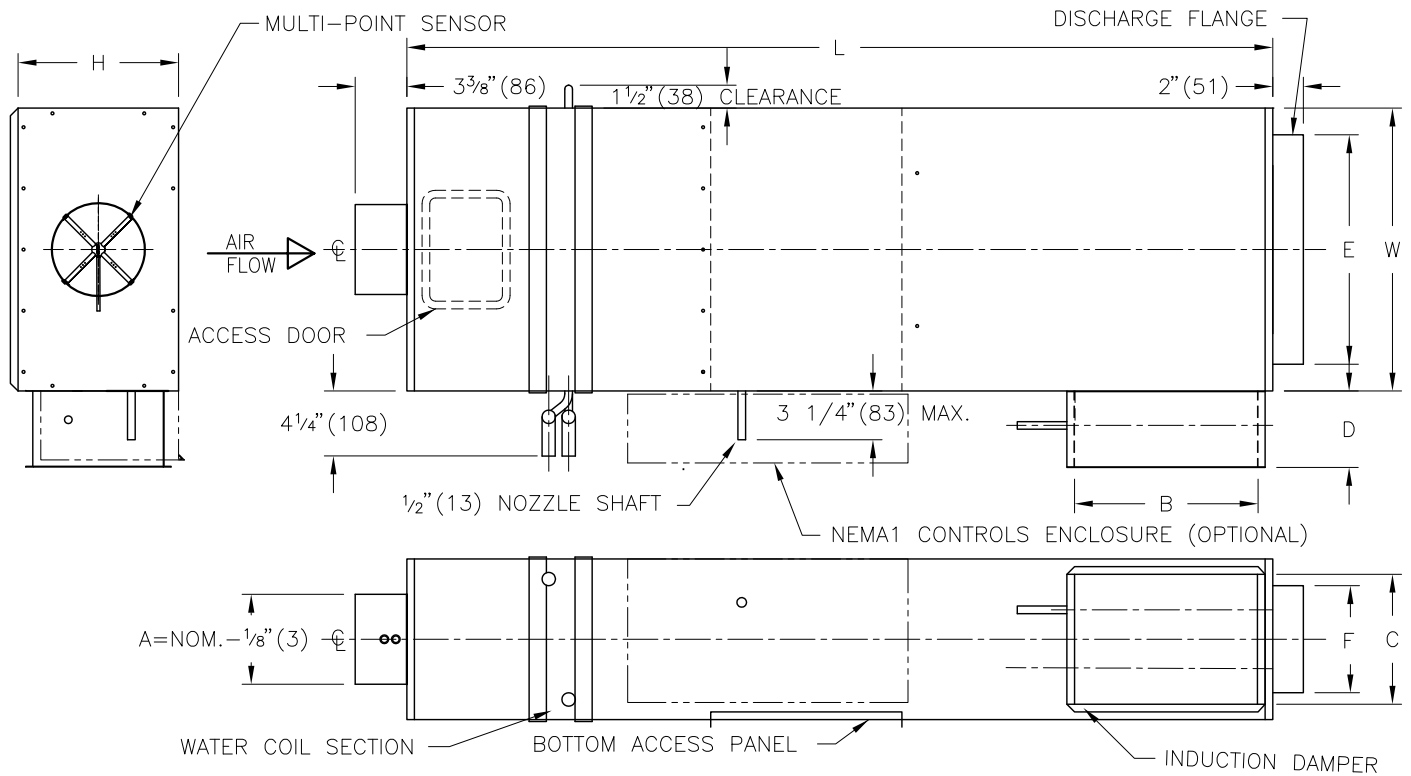
**OPTION**

- CONTROLS ENCLOSURE
- DISCONNECT SWITCH.
- FB LINER
- HANGER BRACKETS (SHIPPED LOOSE)



ALL METRIC DIMENSIONS ( ) ARE SOFT CONVERTED. IMPERIAL DIMENSIONS ARE CONVERTED TO METRIC AND ROUNDED TO THE NEAREST MILLIMETER.

<b>PROJECT:</b>		<b>PRICE®</b>	
<b>ENGINEER:</b>			
<b>CUSTOMER:</b>		INDUCTION TERMINAL DIGITAL CONTROL PRESSURE INDEPENDENT	
<b>SUBMITTAL DATE:</b>	<b>SPEC. SYMBOL:</b>	225888	2011/04/15



UNIT SIZE	MAX CFM	MAX L/S	IMPERIAL UNITS in.									S.I. UNITS mm												
			INLET				RETURN AIR			DISCHARGE				INLET				RETURN AIR			DISCHARGE			
			A	B	C	D	E	F	L	W	H	A	B	C	D	E	F	L	W	H				
6	450	212	5 7/8	14	8 1/2	5 1/2	15	7	56 5/8	18 1/2	10 1/2	149	356	216	140	381	178	1438	470	267				
8	800	378	7 7/8	14	8 1/2	5 1/2	23	7	56 5/8	26	10 1/2	200	356	216	140	584	178	1438	660	267				
10	1350	637	9 7/8	20	10	5 1/2	31	8	60 1/2	34 1/2	12 1/2	251	508	254	140	787	203	1537	876	318				
12	2100	991	11 7/8	21	14	6 1/2	33	12	71 5/8	40 1/2	16 1/2	302	533	356	165	838	305	1819	1029	419				
14	3000	1416	13 7/8	24	14	6 1/2	37	12	78 5/8	40 1/2	16 1/2	352	610	356	165	940	305	1997	1029	419				

**NOTES:**

- INTERNAL INSULATION MEETS REQUIREMENTS OF NFPA 90A & UL181.
- 22 GA. ZINC COATED STEEL HOUSING MECHANICALLY SEALED AND GASKETTED, LEAK RESISTANT CONSTRUCTION.
- CONTROLS, INDUCTION DAMPER & REHEAT COIL MAY BE LEFT HAND OR RIGHT HAND ARRANGEMENT.
- DIGITAL CONTROLS SUPPLIED BY CONTROL CONTRACTOR. CONSULT CUSTOMER SERVICE FOR APPROVED COMPONENTS.
- CONTROLS EXTERNALLY MOUNTED.
- ALLOW 1 1/2" (38) MINIMUM CLEARANCE FOR COIL TUBES AS INDICATED.
- METHOD OF VENTING REHEAT COIL IS TO BE PROVIDED BY INSTALLING CONTRACTOR.

- WATER REHEAT COILS ARE COPPER TUBES & ALUMINUM FINNS WITH O.D. SWEAT CONNECTIONS.
- WATER COIL CONNECTION O.D. IS 1/2" (13) ON SIZE 6, 1 ROW. ALL OTHER 1ROW & 2 ROW ARE 7/8" (22) O.D.

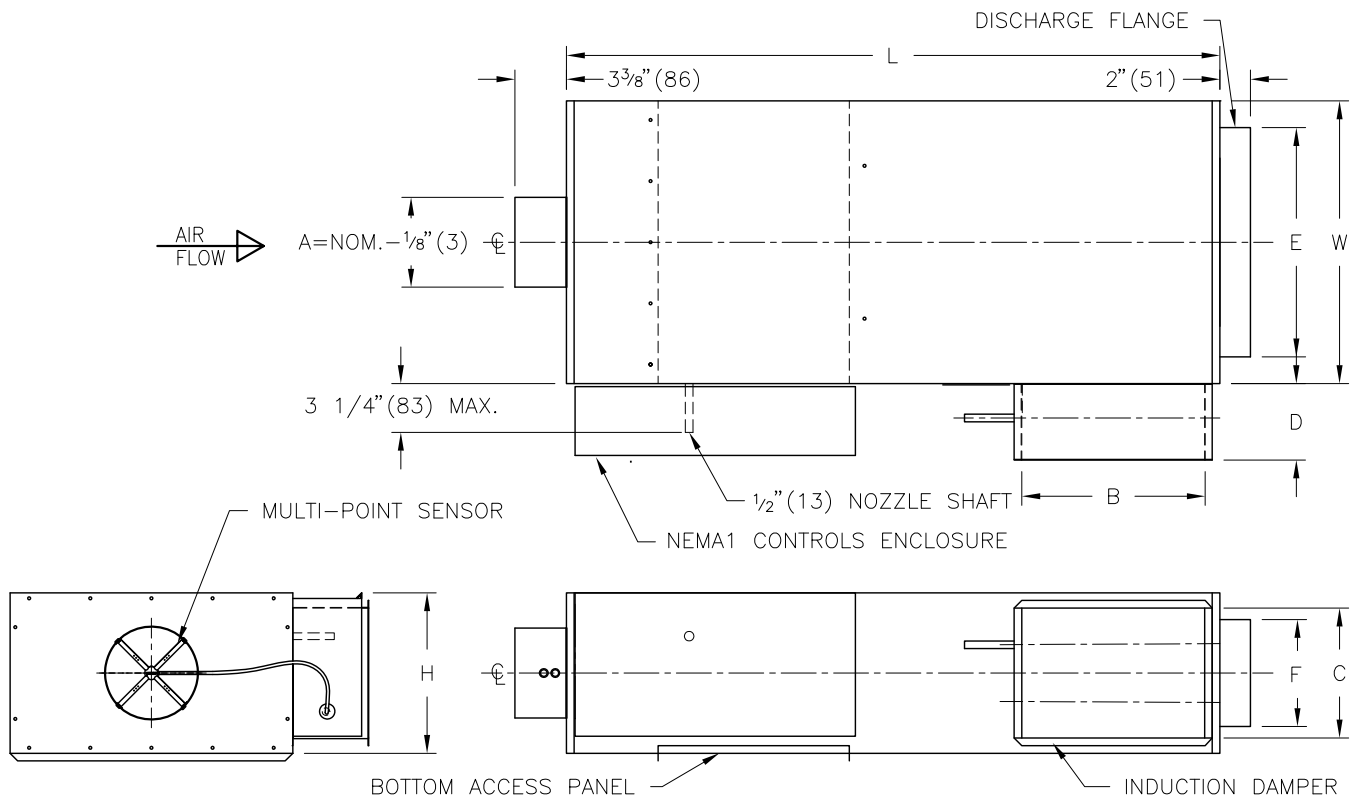
**OPTIONS:**

- CONTROLS ENCLOSURE
- DISCONNECT SWITCH.
- FB LINER
- HANGER BRACKETS (SHIPPED LOOSE)



ALL METRIC DIMENSIONS ( ) ARE SOFT CONVERTED. IMPERIAL DIMENSIONS ARE CONVERTED TO METRIC AND ROUNDED TO THE NEAREST MILLIMETER.

<b>PROJECT:</b>		<b>PRICE®</b>	
<b>ENGINEER:</b>			
<b>CUSTOMER:</b>		<b>BG</b>	<b>IDV5000</b>
<b>SUBMITTAL DATE:</b>		225889	INDUCTION TERMINAL HOT WATER REHEAT DIGITAL CONTROL PRESSURE INDEPENDENT
<b>SPEC. SYMBOL:</b>		2011/04/15	



UNIT SIZE	MAX CFM	MAX L/S	IMPERIAL UNITS in.									S.I. UNITS mm								
			INLET			RETURN AIR			DISCHARGE			INLET			RETURN AIR			DISCHARGE		
			A	B	C	D	E	F	L	W	H	A	B	C	D	E	F	L	W	H
6	450	212	5 7/8	14	8 1/2	5 1/2	15	7	42 3/4	18 1/2	10 1/2	149	356	216	140	381	178	1086	470	267
8	800	378	7 7/8	14	8 1/2	5 1/2	23	7	42 3/4	26	10 1/2	200	356	216	140	584	178	1086	660	267
10	1350	637	9 7/8	20	10	5 1/2	31	8	47 1/4	34 1/2	12 1/2	251	508	254	140	787	203	1200	876	318
12	2100	991	11 7/8	21	14	6 1/2	33	12	59 1/4	40 1/2	16 1/2	302	533	356	165	838	305	1505	1029	419
14	3000	1416	13 7/8	24	14	6 1/2	37	12	59 1/4	40 1/2	16 1/2	352	610	356	165	940	305	1505	1029	419

**NOTES:**

- INTERNAL INSULATION MEETS REQUIREMENTS OF NFPA 90A & UL181.
- 22 GA. ZINC COATED STEEL HOUSING MECHANICALLY SEALED AND GASKETTED, LEAK RESISTANT CONSTRUCTION.
- CONTROLS & INDUCTION DAMPER MAY BE LEFT HAND OR RIGHT HAND ARRANGEMENT.
- CONTROLS EXTERNALLY MOUNTED.
- PRESSURE INDEPENDENT.
- PRICE CONTROLS FACTORY MOUNTED.
- PRICE THERMOSTAT FIELD MOUNTED.

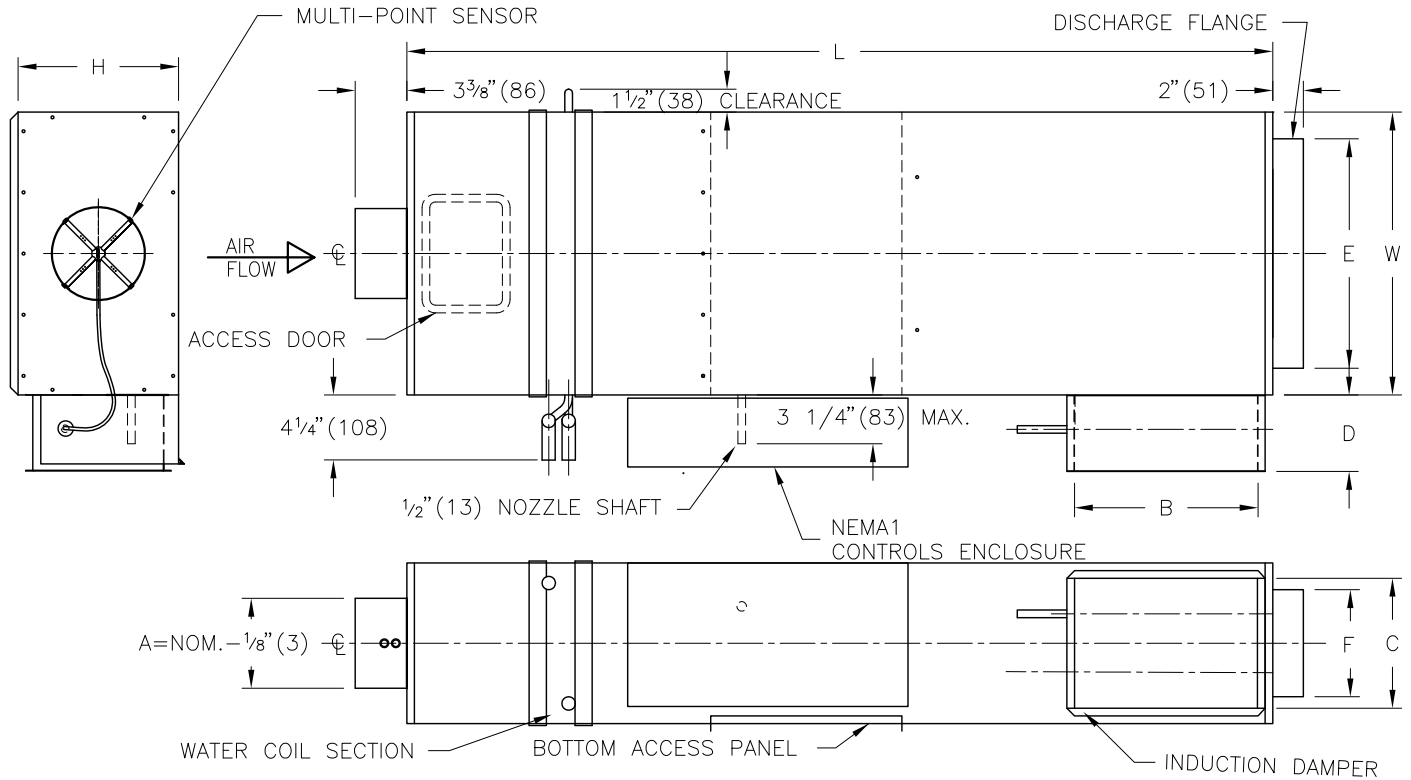
**OPTION**

- DISCONNECT SWITCH.
- FB LINER
- HANGER BRACKETS (SHIPPED LOOSE)



ALL METRIC DIMENSIONS ( ) ARE SOFT CONVERTED. IMPERIAL DIMENSIONS ARE CONVERTED TO METRIC AND ROUNDED TO THE NEAREST MILLIMETER.

<b>PROJECT:</b>		<b>PRICE®</b>	
<b>ENGINEER:</b>			
<b>CUSTOMER:</b>		<b>BG</b>	<b>IDV8000</b> INDUCTION TERMINAL PRICE CONTROLS
<b>SUBMITTAL DATE:</b>		240362	
<b>SPEC. SYMBOL:</b>		2011/04/18	



UNIT SIZE	MAX CFM	MAX L/S	IMPERIAL UNITS in.									S.I. UNITS mm								
			INLET			RETURN AIR			DISCHARGE			INLET			RETURN AIR			DISCHARGE		
			A	B	C	D	E	F	L	W	H	A	B	C	D	E	F	L	W	H
6	450	212	5 7/8	14	8 1/2	5 1/2	15	7	56 5/8	18 1/2	10 1/2	149	356	216	140	381	178	1438	470	267
8	800	378	7 7/8	14	8 1/2	5 1/2	23	7	56 5/8	26	10 1/2	200	356	216	140	584	178	1438	660	267
10	1350	637	9 7/8	20	10	5 1/2	31	8	60 1/2	34 1/2	12 1/2	251	508	254	140	787	203	1537	876	318
12	2100	991	11 7/8	21	14	6 1/2	33	12	71 5/8	40 1/2	16 1/2	302	533	356	165	838	305	1819	1029	419
14	3000	1416	13 7/8	24	14	6 1/2	37	12	78 5/8	40 1/2	16 1/2	352	610	356	165	940	305	1997	1029	419

**NOTES:**

- INTERNAL INSULATION MEETS REQUIREMENTS OF NFPA 90A & UL181.
- 22 GA. ZINC COATED STEEL HOUSING MECHANICALLY SEALED AND GASKETTED, LEAK RESISTANT CONSTRUCTION.
- CONTROLS, INDUCTION DAMPER & REHEAT COIL MAY BE LEFT HAND OR RIGHT HAND ARRANGEMENT.
- CONTROLS EXTERNALLY MOUNTED.
- PRESSURE INDEPENDENT.
- ALLOW 1 1/2" (38) MINIMUM CLEARANCE FOR COIL TUBES AS INDICATED.
- METHOD OF VENTING REHEAT COIL IS TO BE PROVIDED BY INSTALLING CONTRACTOR.

- WATER REHEAT COILS ARE COPPER TUBES & ALUMINUM FINNS WITH O.D. SWEAT CONNECTIONS.
- WATER COIL CONNECTION O.D. IS 1/2" (13) ON SIZE 6, 1 ROW. ALL OTHER 1ROW & 2 ROW ARE 7/8" (22) O.D.
- PRICE CONTROLS FACTORY MOUNTED.
- PRICE THERMOSTAT FIELD MOUNTED.

**OPTIONS:**

- DISCONNECT SWITCH.
- FB LINER
- HANGER BRACKETS (SHIPPED LOOSE)



ALL METRIC DIMENSIONS ( ) ARE SOFT CONVERTED. IMPERIAL DIMENSIONS ARE CONVERTED TO METRIC AND ROUNDED TO THE NEAREST MILLIMETER.

<b>PROJECT:</b>		<b>PRICE®</b>	
<b>ENGINEER:</b>			
<b>CUSTOMER:</b>		<b>86</b>	<b>IDV8000</b> INDUCTION TERMINAL HOT WATER REHEAT PRICE CONTROLS
<b>SUBMITTAL DATE:</b>		240361	
<b>SPEC. SYMBOL:</b>		2011/04/18	