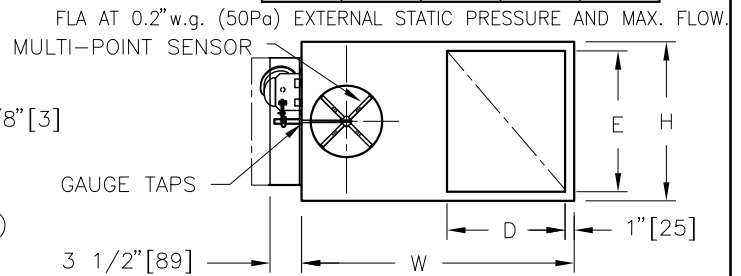
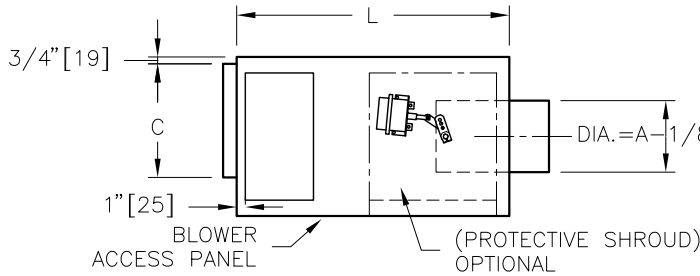


STANDARD MOTOR					
UNIT SIZE	MOTOR H.P.	FULL LOAD AMPS			
		115V	208V	240V	277V
10	1/10	1.75	N/A	N/A	N/A
20	1/8	3.4	1.0	0.9	1.1
30	1/4	6.4	1.1	1.0	2.7
40	1/2	11.2	4.3	4.3	4.0
50	3/4	12.2	5.4	5.2	5.0
60	1	-	6.5	8.2	8.2

ECM MOTOR					
UNIT SIZE	MOTOR H.P.	FULL LOAD AMPS			GAUGE
		115V	240V	277V	
10	1/3	1.25	0.67	0.55	
20	1/3	3.5	2.0	1.5	
30	1/2	6.4	3.2	3.3	
40	1/2	7.2	3.2	2.7	
50	1	11.8	5.8	5.3	
60	1	11.8	5.8	5.3	



IMPERIAL UNITS (Inches)

UNIT SIZE	MAXIMUM FAN CFM	PRIMARY AIR INLET A	RETURN AIR INLET		OUTLET DUCT SIZE		W	H	L	F	GAUGE
			D	E	B	C					
10	400	5,6	8	10	12	10	18	12	28	1 1/2	22
20	700	6,8	12	15 1/2	14	12 1/2	31	17 1/2	25 1/2	3	22
30	1400	8,10	12	15 1/2	14	12 1/2	31	17 1/2	25 1/2	3	22
40	2000	10,12	16	15 1/2	16	15	35	17 1/2	29 1/2	4	20
50	2400	12,14	21	18	20	17 1/2	40	20	38	3	20
60	3200	14,16	21	18	24	18	46	20	38	3	20

SI UNITS (mm)

UNIT SIZE	MAXIMUM FAN L/S	PRIMARY AIR INLET A	RETURN AIR INLET		OUTLET DUCT SIZE		W	H	L	F	GAUGE
			D	E	B	C					
10	189	127,152	203	254	305	254	457	305	711	38	22
20	330	152,203	305	394	356	318	787	445	648	76	22
30	660	203,254	305	394	356	318	787	445	648	76	22
40	943	254,305	406	394	406	381	889	445	749	101	20
50	1132	305,356	533	457	508	445	1016	508	965	76	20
60	1509	356,406	533	457	610	457	1168	508	965	76	20

NOTES:

- INTERNAL INSULATION - FIBERGLASS 3/4" (19mm) THICK, MIN. 1.5# DENSITY WHICH MEETS THE REQUIREMENTS OF NFPA 90A AND UL181
- ZINC COATED STEEL HOUSING - GAUGES SHOWN IN TABLE.
- ALL CONTROL COMPONENTS UTILIZE 20 PSI (138 kPa) CLEAN, DRY CONTROL AIR.
- UNITS NOT TO BE USED FOR TEMPORARY HEAT OR VENTILATION DURING CONSTRUCTION.
- MINIMUM 0.2" w.g. (50 PA) EXTERNAL STATIC PRESSURE TO OPERATE.
- REFER TO SUBMITTED BOX SCHEDULE FOR AIR VOLUMES & INLET SIZES.
- PRESSURE INDEPENDENT.
- ELECTRIC MOTOR 1 PHASE, 60 CYCLE.
- LISTED UL1995 & CSA236 ASSEMBLY.
- LEFT HAND CONTROLS CONFIGURATION IS SHOWN, RIGHT HAND IS ALSO AVAILABLE.



- OPTIONS:** ECM MOTOR DISCONNECT SWITCH (DSW) PROTECTIVE SHROUD 20ga CASING (sz.20,30 ONLY)
- FILTERS HANGER BRACKETS (HB), SHIPPED LOOSE SPRING HANGER BRACKETS (HBS) CAM LATCHES
- LINERS AND CONSTRUCTION: FF FF1 FB SM PM AFPM LT LTAf LTFF 1" (25mm) FIBERGLASS
- ALL METRIC DIMENSIONS () ARE SOFT CONVERTED. IMPERIAL DIMENSIONS ARE CONVERTED TO METRIC AND ROUNDED TO THE NEAREST MILLIMETER.

PROJECT:		<h1>PRICE®</h1>	
ENGINEER:			
CUSTOMER:		FAN POWERED TERMINALS CONSTANT VOLUME PNEUMATIC CONTROLS SIZES 10-60	
SUBMITTAL DATE:	SPEC. SYMBOL:	229711	2010/09/29

STANDARD MOTOR

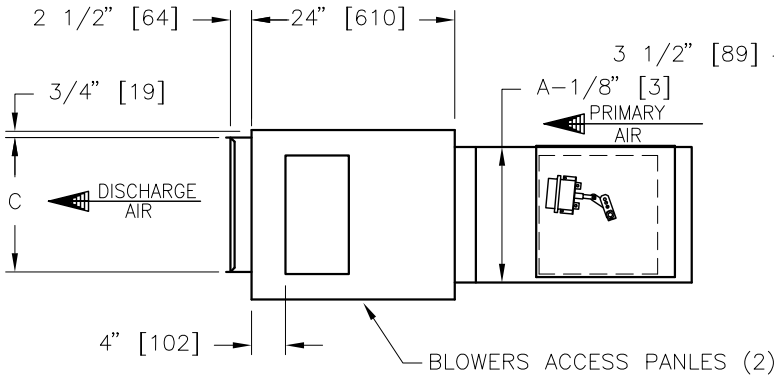
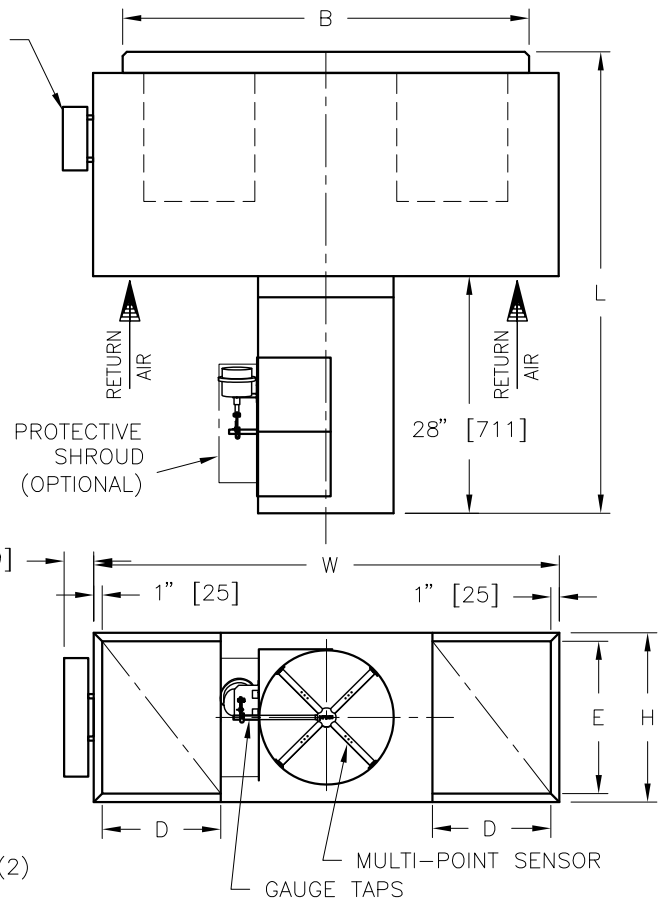
UNIT SIZE	MOTOR H.P.	FULL LOAD AMPS			
		115V	208V	240V	277V
70	2 X ¾	23.2	8.6	8.6	9.4

FLA AT 0.2" w.g. (50Pa) EXTERNAL STATIC PRESSURE AND MAX. FLOW.

ECM MOTOR

UNIT SIZE	MOTOR H.P.	FULL LOAD AMPS		
		115V	240V	277V
70	2 X ¾	20.0	9.0	9.0

ELECTRICAL ENCLOSURE



IMPERIAL UNITS (Inches)

UNIT SIZE	MAXIMUM FAN CFM	PRIMARY AIR INLET A	RETURN AIR INLET		OUTLET DUCT SIZE		W	H	L
			D	E	B	C			
70	4000	16	14	18	48	18	55	20	54½

SI UNITS (mm)

UNIT SIZE	MAXIMUM FAN L/S	PRIMARY AIR INLET A	RETURN AIR INLET		OUTLET DUCT SIZE		W	H	L
			D	E	B	C			
70	1887	406	356	457	1219	457	1397	508	1384

NOTES:

- INTERNAL INSULATION – FIBERGLASS ¾" (19THICK, MIN. 1.5# DENSITY WHICH MEETS THE REQUIREMENTS OF NFPA 90A AND UL181
- 20GA. ZINC COATED STEEL HOUSING.
- ALL CONTROL COMPONENTS UTILIZE 20 PSI (138 kPa) CLEAN, DRY CONTROL AIR.
- UNITS NOT TO BE USED FOR TEMPORARY HEAT OR VENTILATION DURING CONSTRUCTION.
- MINIMUM 0.2" w.g. (50 PA) EXTERNAL STATIC PRESSURE TO OPERATE.
- REFER TO SUBMITTED BOX SCHEDULE FOR AIR VOLUMES & INLET SIZES.
- CONTROLS MOUNTED ON LEFT HAND SIDE OF UNIT AS ILLUSTRATED.
- PRESSURE INDEPENDENT.
- ELECTRIC MOTORS 1 PHASE, 60 CYCLE.
- LISTED UL1995 & CSA236 ASSEMBLY.

OPTIONS: DISCONNECT SWITCH (DSW) PROTECTIVE SHROUD FILTERS
 HANGER BRACKETS (HB) SPRING HANGER BRACKETS (HBS)

LINERS AND CONSTRUCTION:

FF FF1 FB SM PM AFPM LT LTAf LTFF 1"(25mm) FIBERGLASS

ALL METRIC DIMENSIONS () ARE SOFT CONVERTED. IMPERIAL DIMENSIONS ARE CONVERTED TO METRIC AND ROUNDED TO THE NEAREST MILLIMETER.



PROJECT:



ENGINEER:

86

CUSTOMER:

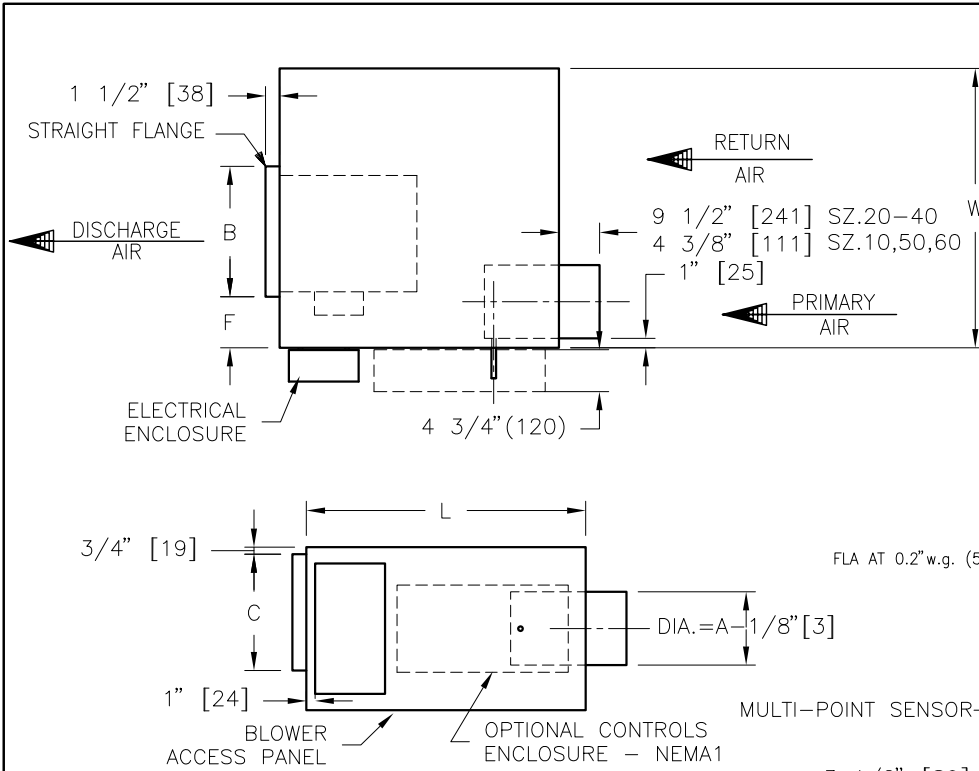
229711

SUBMITTAL DATE:

SPEC. SYMBOL:

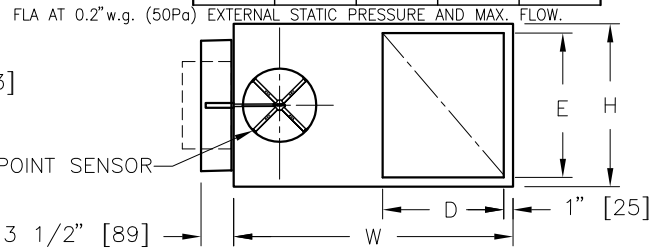
2009/08/27

FPC8000
 FAN POWERED TERMINALS
 CONSTANT VOLUME
 PNEUMATIC CONTROLS
 SIZE 70



STANDARD MOTOR					
UNIT SIZE	MOTOR H.P.	FULL LOAD AMPS			
		115V	208V	240V	277V
10	1/10	2.11	N/A	N/A	N/A
20	1/8	3.4	1.0	0.9	1.1
30	1/4	6.4	1.1	1.0	2.7
40	1/2	11.2	4.3	4.3	4.0
50	3/4	12.2	5.4	5.2	5.0
60	1	-	6.5	8.2	8.2

ECM MOTOR					
UNIT SIZE	MOTOR H.P.	FULL LOAD AMPS			GAUGE
		115V	240V	277V	
10	1/3	1.79	0.85	0.72	22
20	1/3	3.5	2.0	1.5	22
30	1/2	6.4	3.2	3.3	22
40	1/2	7.2	3.2	2.7	20
50	1	11.8	5.8	5.3	20
60	1	11.8	5.8	5.3	20



IMPERIAL UNITS (Inches)

UNIT SIZE	MAXIMUM FAN CFM	PRIMARY AIR INLET A	RETURN AIR INLET		OUTLET DUCT SIZE		W	H	L	F	GAUGE
			D	E	B	C					
10	400	5,6	8	10	12	10	18	12	28	1 1/2	22
20	700	6,8	12	15 1/2	14	12 1/2	31	17 1/2	25 1/2	3	22
30	1400	8,10	12	15 1/2	14	12 1/2	31	17 1/2	25 1/2	3	22
40	2000	10,12	16	15 1/2	16	15	35	17 1/2	29 1/2	4	20
50	2400	12,14	21	18	20	17 1/2	40	20	38	3	20
60	3200	14,16	21	18	24	18	46	20	38	3	20

SI UNITS (mm)

UNIT SIZE	MAXIMUM FAN L/S	PRIMARY AIR INLET A	RETURN AIR INLET		OUTLET DUCT SIZE		W	H	L	F	GAUGE
			D	E	B	C					
10	189	127,152	203	254	305	254	457	305	711	38	22
20	330	152,203	305	394	356	318	787	445	648	76	22
30	660	203,254	305	394	356	318	787	445	648	76	22
40	943	254,305	406	394	406	381	889	445	749	101	20
50	1132	305,356	533	457	508	445	1016	508	965	76	20
60	1509	356,406	533	457	610	457	1168	508	965	76	20

NOTES:

- INTERNAL INSULATION – FIBERGLASS 3/4" (19mm) THICK, MIN. 1.5# DENSITY WHICH MEETS THE REQUIREMENTS OF NFPA 90A AND UL181
- ZINC COATED STEEL HOUSING – GAUGES SHOWN IN TABLE.
- DIGITAL CONTROLS BY CONTROL CONTRACTOR.
- UNITS NOT TO BE USED FOR TEMPORARY HEAT OR VENTILATION DURING CONSTRUCTION.
- MINIMUM 0.1" w.g. (25 PA) EXTERNAL STATIC PRESSURE TO OPERATE. (UNITS SZ.50,60,70 & WITH ELECTRIC HEAT REQUIRE MINIMUM 0.2" w.g. (50 PA))
- REFER TO SUBMITTED BOX SCHEDULE FOR AIR VOLUMES & INLET SIZES.
- ELECTRIC MOTOR 1 PHASE, 60 CYCLE.
- LISTED UL1995 & CSA236 ASSEMBLY
- LEFT HAND CONTROLS CONFIGURATION IS SHOWN, RIGHT HAND IS ALSO AVAILABLE.



- OPTIONS:**
- ECM MOTOR
 - DISCONNECT SWITCH (DSW)
 - CONTROLS ENCLOSURE
 - 20ga CASING (sz.20,30 ONLY)
 - FILTERS
 - HANGER BRACKETS (HB), SHIPPED LOOSE
 - SPRING HANGER BRACKETS (HBS)
 - CAM LATCHES
- LINERS AND CONSTRUCTION:
- FF
 - FF1
 - FB
 - SM
 - PM
 - AFPM
 - LT
 - LTAF
 - 1" (25mm) FIBERGLASS
- ALL METRIC DIMENSIONS () ARE SOFT CONVERTED. IMPERIAL DIMENSIONS ARE CONVERTED TO METRIC AND ROUNDED TO THE NEAREST MILLIMETER.

PROJECT:	<h1>PRICE®</h1>	
ENGINEER:	<h2>86</h2>	FDC5000
CUSTOMER:	229713	FAN POWERED TERMINALS CONSTANT VOLUME DIGITAL CONTROLS SIZE 10-60
SUBMITTAL DATE:	SPEC. SYMBOL:	2011/04/19

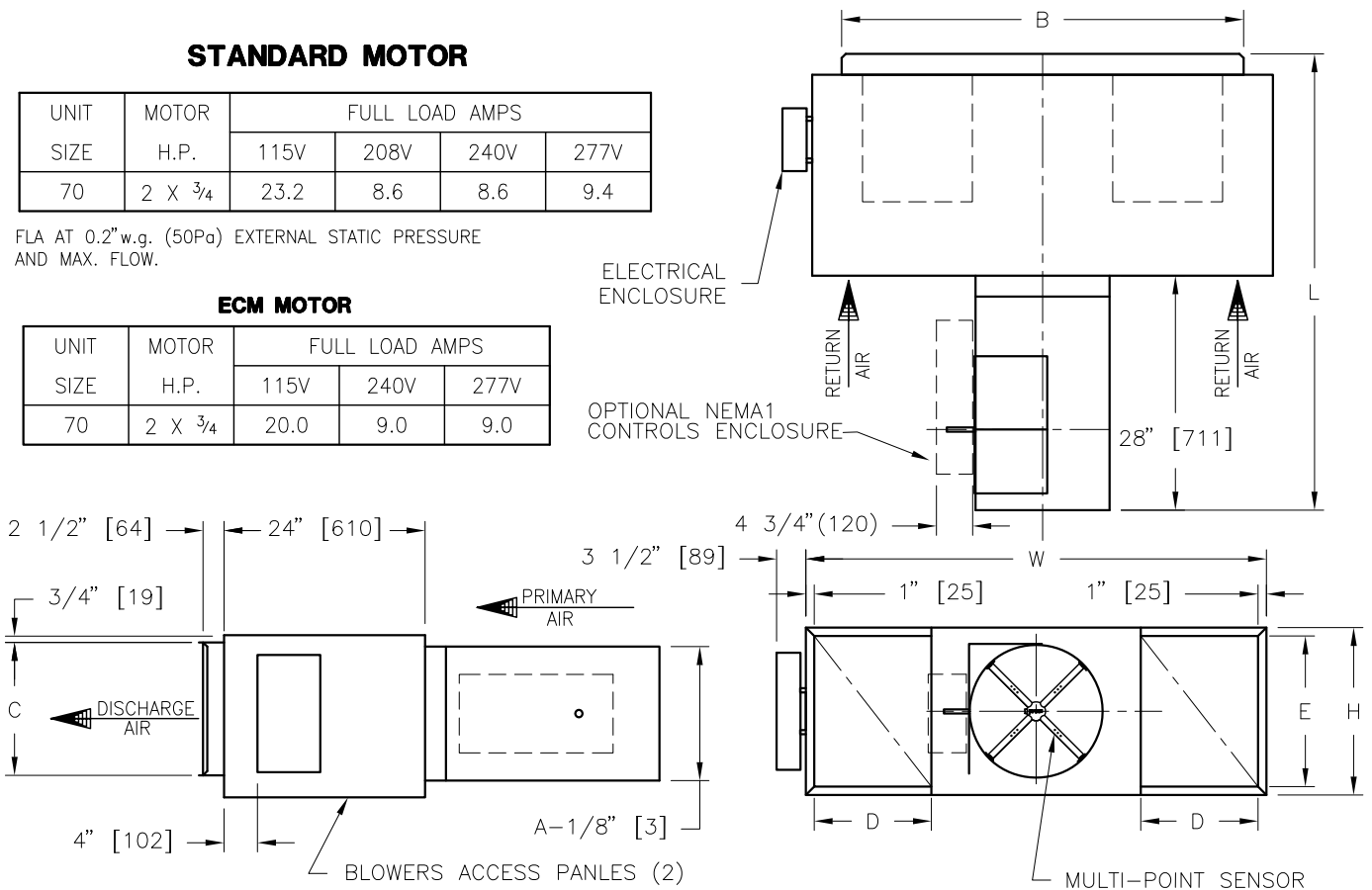
STANDARD MOTOR

UNIT SIZE	MOTOR H.P.	FULL LOAD AMPS			
		115V	208V	240V	277V
70	2 X ¾	23.2	8.6	8.6	9.4

FLA AT 0.2" w.g. (50Pa) EXTERNAL STATIC PRESSURE AND MAX. FLOW.

ECM MOTOR

UNIT SIZE	MOTOR H.P.	FULL LOAD AMPS		
		115V	240V	277V
70	2 X ¾	20.0	9.0	9.0



IMPERIAL UNITS (Inches)

UNIT SIZE	MAXIMUM FAN CFM	PRIMARY AIR INLET A	RETURN AIR INLET		OUTLET DUCT SIZE		W	H	L
			D	E	B	C			
70	4000	16	14	18	48	18	55	20	54½

SI UNITS (mm)

UNIT SIZE	MAXIMUM FAN L/S	PRIMARY AIR INLET A	RETURN AIR INLET		OUTLET DUCT SIZE		W	H	L
			D	E	B	C			
70	1887	406	356	457	1219	457	1397	508	1384

NOTES:

- INTERNAL INSULATION – FIBERGLASS ¾" (19mm) THICK, MIN. 1.5# DENSITY WHICH MEETS THE REQUIREMENTS OF NFPA 90A AND UL181
- 20GA. ZINC COATED STEEL HOUSING.
- DIGITAL CONTROLS BY CONTROL CONTRACTOR.
- UNITS NOT TO BE USED FOR TEMPORARY HEAT OR VENTILATION DURING CONSTRUCTION.
- MINIMUM 0.2" w.g. (50 PA) EXTERNAL STATIC PRESSURE TO OPERATE.
- REFER TO SUBMITTED BOX SCHEDULE FOR AIR VOLUMES & INLET SIZES.
- CONTROLS MOUNTED ON LEFT HAND SIDE OF UNIT AS ILLUSTRATED.
- ELECTRIC MOTORS 1 PHASE, 60 CYCLE.
- LISTED UL1995 & CSA236 ASSEMBLY.



OPTIONS: DISCONNECT SWITCH (DSW) HANGER BRACKETS (HB) SPRING HANGER BRACKETS (HBS)

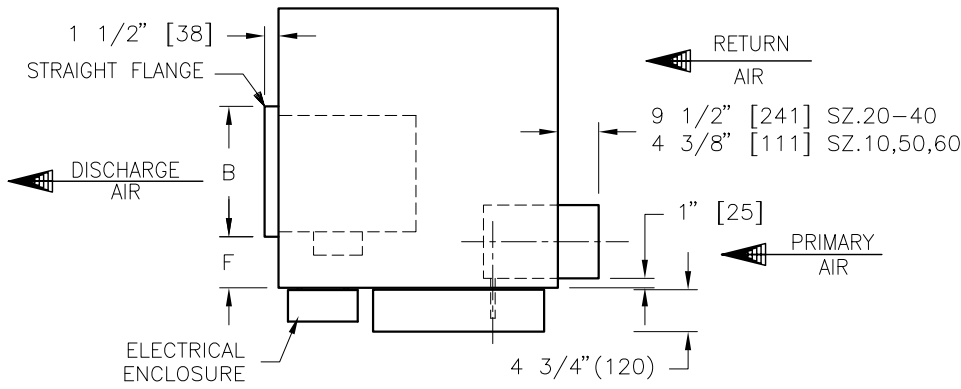
FILTERS CONTROLS ENCLOSURE CAM LATCHES

LINERS AND CONSTRUCTION:

FF FF1 FB SM PM AFPM LT LTAF LTFF 1" (25mm) FIBERGLASS

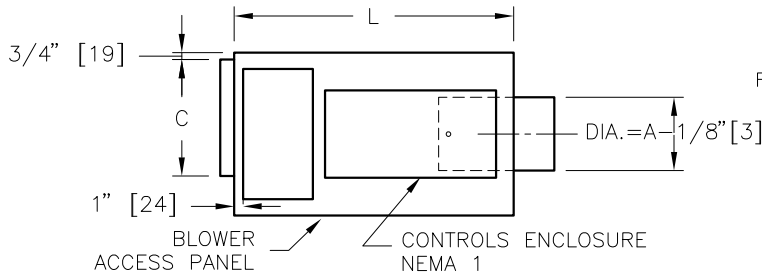
ALL METRIC DIMENSIONS () ARE SOFT CONVERTED. IMPERIAL DIMENSIONS ARE CONVERTED TO METRIC AND ROUNDED TO THE NEAREST MILLIMETER.

PROJECT:		PRICE®	
ENGINEER:			
CUSTOMER:		229713	FAN POWERED TERMINALS CONSTANT VOLUME DIGITAL CONTROLS SIZE 70
SUBMITTAL DATE:	SPEC. SYMBOL:	2011/04/19	

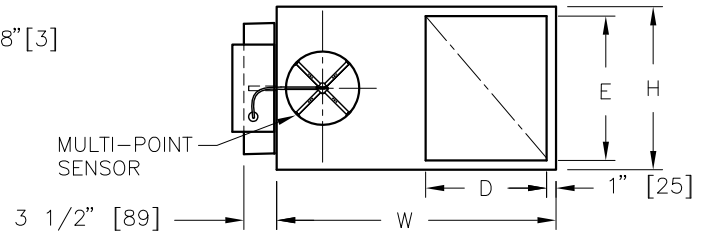


		STANDARD MOTOR			
UNIT SIZE	MOTOR H.P.	FULL LOAD AMPS			
		115V	208V	240V	277V
10	1/10	2.11	N/A	N/A	N/A
20	1/8	3.4	1.0	0.9	1.1
30	1/4	6.4	1.1	1.0	2.7
40	1/2	11.2	4.3	4.3	4.0
50	3/4	12.2	5.4	5.2	5.0
60	1	-	6.5	8.2	8.2

		ECM MOTOR		
UNIT SIZE	MOTOR H.P.	FULL LOAD AMPS		
		115V	240V	277V
10	1/3	1.79	0.85	0.72
20	1/3	3.5	2.0	1.5
30	1/2	6.4	3.2	3.3
40	1/2	7.2	3.2	2.7
50	1	11.8	5.8	5.3
60	1	11.8	5.8	5.3



FLA AT 0.2" w.g. (50Pa) EXTERNAL STATIC PRESSURE AND MAX. FLOW.



IMPERIAL UNITS (Inches)

UNIT SIZE	MAXIMUM FAN CFM	PRIMARY AIR INLET A	RETURN AIR INLET		OUTLET DUCT SIZE		W	H	L	F	GAUGE
			D	E	B	C					
10	400	5,6	8	10	12	10	18	12	28	1 1/2	22
20	700	6,8	12	15 1/2	14	12 1/2	31	17 1/2	25 1/2	3	22
30	1400	8,10	12	15 1/2	14	12 1/2	31	17 1/2	25 1/2	3	22
40	2000	10,12	16	15 1/2	16	15	35	17 1/2	29 1/2	4	20
50	2400	12,14	21	18	20	17 1/2	40	20	38	3	20
60	3200	14,16	21	18	24	18	46	20	38	3	20

SI UNITS (mm)

UNIT SIZE	MAXIMUM FAN L/S	PRIMARY AIR INLET A	RETURN AIR INLET		OUTLET DUCT SIZE		W	H	L	F	GAUGE
			D	E	B	C					
10	189	127,152	203	254	305	254	457	305	711	38	22
20	330	152,203	305	394	356	318	787	445	648	76	22
30	660	203,254	305	394	356	318	787	445	648	76	22
40	943	254,305	406	394	406	381	889	445	749	101	20
50	1132	305,356	533	457	508	445	1016	508	965	76	20
60	1509	356,406	533	457	610	457	1168	508	965	76	20

NOTES:

- INTERNAL INSULATION - 3/4" (19mm) THICK, MIN. 1.5# DENSITY WHICH MEETS REQUIREMENTS OF NFPA 90A AND UL181
- ZINC COATED STEEL HOUSING - GAUGES SHOWN IN TABLE.
- UNITS NOT TO BE USED FOR TEMPORARY HEAT OR VENTILATION DURING CONSTRUCTION.
- MINIMUM 0.1" w.g. (25 PA) EXTERNAL STATIC PRESSURE TO OPERATE. (UNITS SZ.50,60,70 & WITH ELECTRIC HEAT REQUIRE MINIMUM 0.2" w.g. (50 PA))
- REFER TO SUBMITTED BOX SCHEDULE FOR AIR VOLUMES & INLET SIZES.
- ELECTRIC MOTOR 1 PHASE, 60 CYCLE.
- LISTED UL1995 & CSA236 ASSEMBLY
- LEFT HAND CONTROLS CONFIGURATION IS SHOWN, RIGHT HAND IS ALSO AVAILABLE.
- PRICE CONTROLS FACTORY MOUNTED.
- PRICE THERMOSTAT FIELD MOUNTED.



- OPTIONS:** ECM MOTOR DISCONNECT SWITCH (DSW) FILTERS 20ga CASING (sz.20,30 ONLY)
 HANGER BRACKETS (HB), SHIPPED LOOSE SPRING HANGER BRACKETS (HBS) CAM LATCHES

LINERS AND CONSTRUCTION:

- FF FF1 FB SM PM AFPM LT LTAf LTFF 1" (25mm) FIBERGLASS

ALL METRIC DIMENSIONS () ARE SOFT CONVERTED. IMPERIAL DIMENSIONS ARE CONVERTED TO METRIC AND ROUNDED TO THE NEAREST MILLIMETER.

PROJECT:		PRICE®	
ENGINEER:			
CUSTOMER:		BG	FDC8000 FAN POWERED TERMINALS CONSTANT VOLUME PRICE CONTROLS SIZE 10-60
SUBMITTAL DATE:		240363	
SPEC. SYMBOL:		2011/08/04	

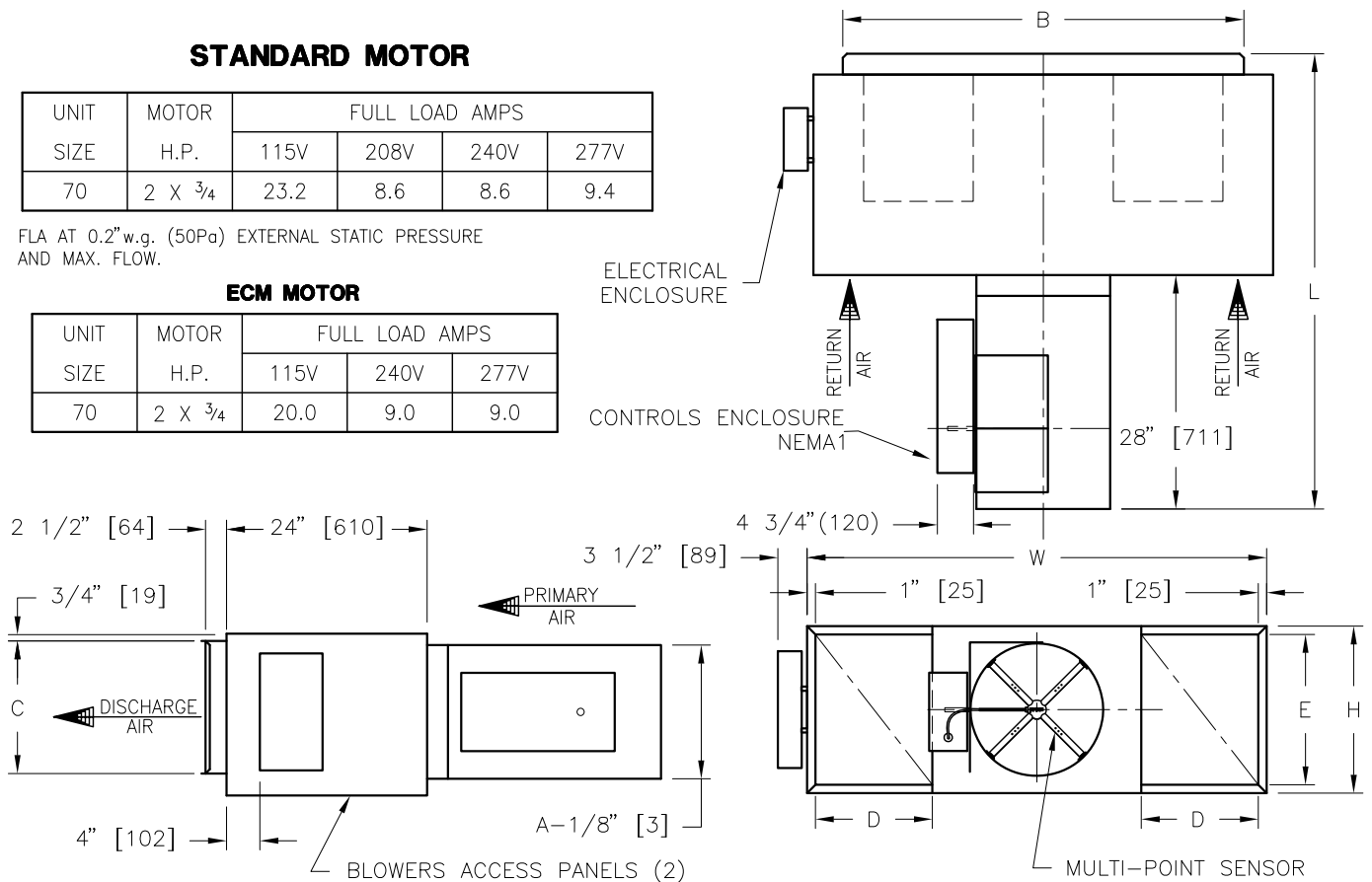
STANDARD MOTOR

UNIT SIZE	MOTOR H.P.	FULL LOAD AMPS			
		115V	208V	240V	277V
70	2 X ¾	23.2	8.6	8.6	9.4

FLA AT 0.2" w.g. (50Pa) EXTERNAL STATIC PRESSURE AND MAX. FLOW.

ECM MOTOR

UNIT SIZE	MOTOR H.P.	FULL LOAD AMPS		
		115V	240V	277V
70	2 X ¾	20.0	9.0	9.0



IMPERIAL UNITS (Inches)

UNIT SIZE	MAXIMUM FAN CFM	PRIMARY AIR INLET A	RETURN AIR INLET		OUTLET DUCT SIZE		W	H	L
			D	E	B	C			
70	4000	16	14	18	48	18	55	20	54½

SI UNITS (mm)

UNIT SIZE	MAXIMUM FAN L/S	PRIMARY AIR INLET A	RETURN AIR INLET		OUTLET DUCT SIZE		W	H	L
			D	E	B	C			
70	1887	406	356	457	1219	457	1397	508	1384

NOTES:

- INTERNAL INSULATION – FIBERGLASS ¾" (19mm) THICK, MIN. 1.5# DENSITY WHICH MEETS REQUIREMENTS OF NFPA 90A AND UL181
- 20GA. ZINC COATED STEEL HOUSING.
- UNITS NOT TO BE USED FOR TEMPORARY HEAT OR VENTILATION DURING CONSTRUCTION.
- MINIMUM 0.2" w.g. (50 PA) EXTERNAL STATIC PRESSURE TO OPERATE.
- REFER TO SUBMITTED BOX SCHEDULE FOR AIR VOLUMES & INLET SIZES.
- CONTROLS MOUNTED ON LEFT HAND SIDE OF UNIT AS ILLUSTRATED.
- ELECTRIC MOTORS 1 PHASE, 60 CYCLE.
- LISTED UL1995 & CSA236 ASSEMBLY.
- PRICE CONTROLS FACTORY MOUNTED.
- PRICE THERMOSTAT FIELD MOUNTED.



OPTIONS: DISCONNECT SWITCH (DSW) HANGER BRACKETS (HB) SPRING HANGER BRACKETS (HBS) FILTERS CAM LATCHES

LINERS AND CONSTRUCTION: (REFER TO ATTACHED SUBMITTAL)

- FF FF1 FB SM PM AFPM LT LTAF LTFF 1" (25mm) FIBERGLASS

ALL METRIC DIMENSIONS () ARE SOFT CONVERTED. IMPERIAL DIMENSIONS ARE CONVERTED TO METRIC AND ROUNDED TO THE NEAREST MILLIMETER.

PROJECT:		PRICE®	
ENGINEER:		BG	FDC8000 FAN POWERED TERMINALS CONSTANT VOLUME PRICE CONTROLS SIZE 70
CUSTOMER:		240363	
SUBMITTAL DATE:	SPEC. SYMBOL:	2011/04/19	