

UNIT SIZE	MAX CFM	MAX L/S	IMPERIAL UNITS (Inches)							SI UNITS (mm)								
			INLET A	B	C	OUTLET		L	G	INLET A	B	C	D	OUTLET		L	G	
						E	F							E	F			
4	225	106	4**							11 1/2	102						292	
5	350	165	5**							11 1/2	127						292	
6	400	189	6	21	10	11	11 7/8	7 7/8	56 1/2	9 1/2	152	533	254	279	302	200	1435	241
7	550	259	7							9 1/2	178							
8	750	354	8							9 1/2	203						241	
9	1000	472	9	25	12 1/2	13	13 7/8	12 3/8	58 1/2	9 1/2	229	635	318	330	352	314	1486	241
10	1300	613	10							9 1/2	251							
12	1900	896	12	29	15	15	15 7/8	14 7/8	66 1/2	9 1/2	305	737	381	381	403	378	1689	241
14	2900	1368	14	40	17 1/2	20 1/8	19 7/8	17 3/8	78 7/8	4 3/8	356	1016	445	511	505	441	2003	111
16	3500	1651	16	48	18	24 1/8	23 7/8	17 7/8	85 5/8	4 3/8	406	1219	457	613	606	454	2175	111

** 6" DIAMETER DUCT WITH 4" OR 5" REDUCER.

NOTES:

- INTERNAL INSULATION – FIBERGLASS 3/4" (19mm) THICK, MIN. 1.5# DENSITY WHICH MEETS REQUIREMENTS OF NFPA 90A AND UL181.
- 22 GA. ZINC COATED STEEL HOUSING. MECHANICALLY SEALED AND GASKETED, LEAK RESISTANT CONSTRUCTION.
- MAXIMUM L/S (CFM) SETTINGS ARE FOR EITHER HOT OR COLD INLETS.
- GAUGE TAPS ARE STANDARD.
- PNEUMATIC ACTUATOR SUPPLIED & MOUNTED BY PRICE.
- CLEAN, DRY, 20 PSI (138 KPa) CONTROL AIR REQUIRED.
- TOTAL FLOW SENSOR TUBES EXIT ON HOT DECK SIDE.
- SILENCER – MEDIUM PRESSURE STYLE, 22 GAUGE GALVANIZED CASING 22GA PERFORATED LINER OVER FIBERGLASS ACOUSTIC MEDIA
- PRODUCT TO BE SHIPPED ASSEMBLED WITH SILENCER FACTORY ATTACHED

OPTIONS:

- PNEUMATIC ACTUATOR SUPPLIED BY CONTROL CONTRACTOR & MOUNTED BY PRICE.
- CONTROLLER COVER.

TERMINAL LINERS AND CONSTRUCTION OPTIONS:

- 1" (25mm) FIBERGLASS (FG1)
- FF CRWF SM
- FF50 FF1 PM
- CRAF FB AFPM

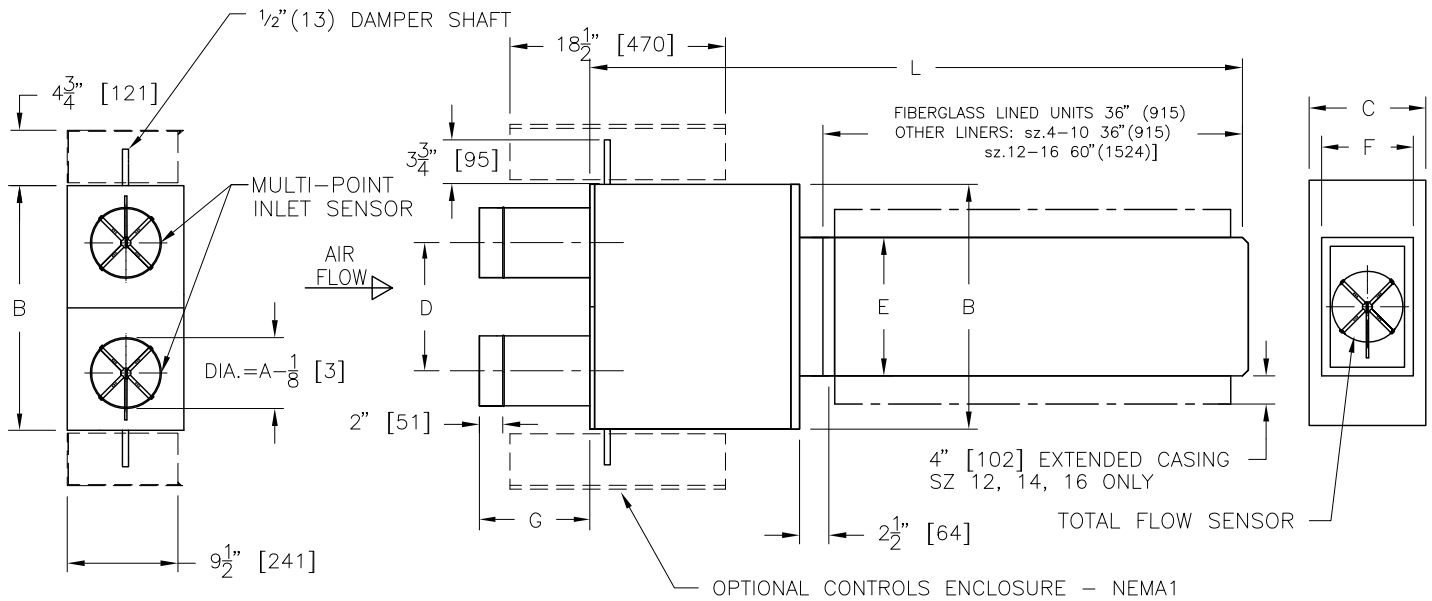
SILENCER LINERS:

- PL – POLYMER LINER
- FC – FIBERGLASS CLOTH



ALL METRIC DIMENSIONS () ARE SOFT CONVERTED. IMPERIAL DIMENSIONS ARE CONVERTED TO METRIC AND ROUNDED TO THE NEAREST MILLIMETER.

PROJECT:		PRICE [®]	
ENGINEER:		<i>BG</i>	DPUQ8000
CUSTOMER:		254143	DUAL DUCT ULTRA QUIET CONSTANT & VARIABLE PNEUMATIC CONTROLS PRESSURE INDEPENDENT
SUBMITTAL DATE:	SPEC. SYMBOL:	2010/12/22	



UNIT SIZE	MAX CFM	MAX L/S	IMPERIAL UNITS (Inches)							SI UNITS (mm)								
			INLET A	B	C	OUTLET		L	G	INLET A	B	C	D	OUTLET		L	G	
						E	F							E	F			
4	225	106	4**							11 1/2	102						292	
5	350	165	5**							11 1/2	127						292	
6	400	189	6	21	10	11	11 7/8	7 7/8	56 1/2	9 1/2	152	533	254	279	302	200	1435	241
7	550	259	7							9 7/8	178							241
8	750	354	8							9 1/2	203							241
9	1000	472	9							9 1/2	229							241
10	1300	613	10	25	12 1/2	13	13 7/8	12 3/8	58 1/2	9 1/2	251	635	318	330	352	314	1486	241
12	1900	896	12							9 1/2	305							737
14	2900	1368	14	40	17 1/2	20 1/8	19 7/8	17 3/8	78 7/8	4 3/8	356	1016	445	511	505	441	2003	111
16	3500	1651	16	48	18	24 1/8	23 7/8	17 7/8	85 9/8	4 3/8	406	1219	457	613	606	454	2175	111

** 6" DIAMETER DUCT WITH 4" OR 5" REDUCER.

NOTES:

- INTERNAL INSULATION – FIBERGLASS 3/4" (19mm) THICK, MIN. 1.5# DENSITY WHICH MEETS REQUIREMENTS OF NFPA 90A AND UL181.
- 22 GA. ZINC COATED STEEL HOUSING. MECHANICALLY SEALED AND GASKETED, LEAK RESISTANT CONSTRUCTION.
- MAXIMUM L/S (CFM) SETTINGS ARE FOR EITHER HOT OR COLD INLETS.
- TOTAL FLOW SENSOR TUBES EXIT ON HOT DECK SIDE.
- DIGITAL CONTROLS BY CONTROL CONTRACTOR
- SILENCER – MEDIUM PRESSURE STYLE, 22 GAUGE GALVANIZED CASING 22GA PERFORATED LINER OVER FIBERGLASS ACOUSTIC MEDIA
- PRODUCT TO BE SHIPPED ASSEMBLED WITH SILENCER FACTORY ATTACHED

OPTIONS:

- CONTROLS ENCLOSURE
- DISCONNECT SWITCH

TERMINAL LINERS AND CONSTRUCTION OPTIONS:

- 1" (25mm) FIBERGLASS (FG1)
- FF FF50 SM
- CRAF FF1 PM
- CRWF FB AFPM

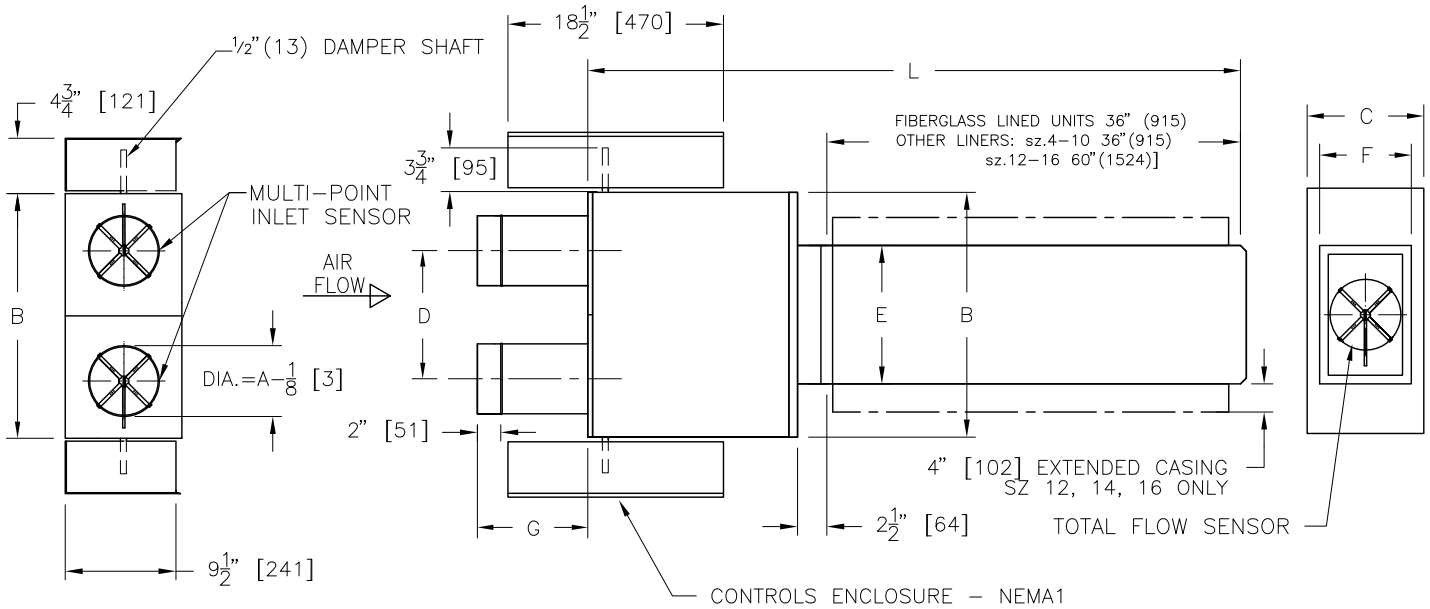
SILENCER LINERS:

- PL – POLYMER LINER
- FC – FIBERGLASS CLOTH



ALL METRIC DIMENSIONS () ARE SOFT CONVERTED. IMPERIAL DIMENSIONS ARE CONVERTED TO METRIC AND ROUNDED TO THE NEAREST MILLIMETER.

PROJECT:		PRICE®	
ENGINEER:		86	DDUQ5000
CUSTOMER:		254144	DUAL DUCT ULTRA QUIET CONSTANT & VARIABLE DIGITAL CONTROLS PRESSURE INDEPENDENT
SUBMITTAL DATE:	SPEC. SYMBOL:	2011/04/19	



UNIT SIZE	MAX CFM	MAX L/S	IMPERIAL UNITS (Inches)							SI UNITS (mm)								
			INLET A	B	C	OUTLET		L	G	INLET A	B	C	D	OUTLET		L	G	
						E	F							E	F			
4	225	106	4**							11 1/2	102						292	
5	350	165	5**							11 1/2	127						292	
6	400	189	6	21	10	11	11 7/8	7 7/8	56 1/2	9 1/2	152	533	254	279	302	200	1435	241
7	550	259	7							9 7/8	178							241
8	750	354	8				9 1/2	203		241								
9	1000	472	9				9 1/2	229		241								
10	1300	613	10	25	12 1/2	13	13 7/8	12 3/8	58 1/2	9 1/2	251	635	318	330	352	314	1486	241
12	1900	896	12				15 7/8	14 7/8	66 1/2	9 1/2	305							737
14	2900	1368	14	40	17 1/2	20 1/8	19 7/8	17 3/8	78 7/8	4 3/8	356	1016	445	511	505	441	2003	111
16	3500	1651	16	48	18	24 1/8	23 7/8	17 7/8	85 9/8	4 3/8	406	1219	457	613	606	454	2175	111

** 6" DIAMETER DUCT WITH 4" OR 5" REDUCER.

NOTES:

- INTERNAL INSULATION – FIBERGLASS 3/4" (19mm) THICK, MIN. 1.5# DENSITY WHICH MEETS REQUIREMENTS OF NFPA 90A AND UL181.
- 22 GA. ZINC COATED STEEL HOUSING. MECHANICALLY SEALED AND GASKETED, LEAK RESISTANT CONSTRUCTION.
- MAXIMUM L/S (CFM) SETTINGS ARE FOR EITHER HOT OR COLD INLETS.
- TOTAL FLOW SENSOR TUBES EXIT ON HOT DECK SIDE.
- PRICE CONTROLS FACTORY MOUNTED
- PRICE THERMOSTAT FIELD MOUNTED
- SILENCER – MEDIUM PRESSURE STYLE, 22 GAUGE GALVANIZED CASING 22GA PERFORATED LINER OVER FIBERGLASS ACOUSTIC MEDIA
- PRODUCT TO BE SHIPPED ASSEMBLED WITH SILENCER FACTORY ATTACHED

OPTIONS:

- DISCONNECT SWITCH

TERMINAL LINERS AND CONSTRUCTION OPTIONS:

- 1" (25mm) FIBERGLASS (FG1)
- FF
- FF50 SM
- FB PM
- CRAF AFPM
- CRWF

SILENCER LINERS:

- PL – POLYMER LINER
- FC – FIBERGLASS CLOTH



ALL METRIC DIMENSIONS () ARE SOFT CONVERTED. IMPERIAL DIMENSIONS ARE CONVERTED TO METRIC AND ROUNDED TO THE NEAREST MILLIMETER.

PROJECT:		PRICE®	
ENGINEER:		86	DDUQ8000
CUSTOMER:		254145	DUAL DUCT ULTRA QUIET CONSTANT & VARIABLE PRICE CONTROLS PRESSURE INDEPENDENT
SUBMITTAL DATE:	SPEC. SYMBOL:	2011/04/19	