

UNIT SIZE	MAX CFM	MAX L/S	IMPERIAL UNITS (Inches)								SI UNITS (mm)							
			INLET A	B	C	D	OUTLET		L	G	INLET A	B	C	D	OUTLET		L	G
							E	F							E	F		
4	225	106	4**							1 1/2	102							292
5	350	165	5**							1 1/2	127							292
6	400	189	6	21	10	11	11 7/8	7 7/8	18	9 1/2	152	533	254	279	302	200	457	241
7	550	259	7							9 1/2	178							241
8	750	354	8					9 7/8		9 1/2	203							241
9	1000	472	9	25	12 1/2	13	13 7/8	12 3/8	20	9 1/2	229	635	318	330	352	314	508	241
10	1300	613	10							9 1/2	251							241
12	1900	896	12	29	15	15	15 7/8	14 7/8	28	9 1/2	305	737	381	381	403	378	711	241
14	2900	1368	14	40	17 1/2	20 1/8	19 7/8	17 3/8	40 3/8	4 3/8	356	1016	445	511	505	441	1026	111
16	3500	1651	16	48	18	24 1/8	23 7/8	17 7/8	47 1/8	4 3/8	406	1219	457	613	606	454	1197	111

NOTES:

- INTERNAL INSULATION – FIBERGLASS 3/4”(19mm) THICK, MIN. 1.5# DENSITY WHICH MEETS REQUIREMENTS OF NFPA 90A AND UL181.
 - 22 GA. ZINC COATED STEEL HOUSING. MECHANICALLY SEALED AND GASKETED, LEAK RESISTANT CONSTRUCTION.
 - MAXIMUM L/S (CFM) SETTINGS ARE FOR EITHER HOT OR COLD INLETS.
 - GAUGE TAPS ARE STANDARD.
 - PNEUMATIC ACTUATOR SUPPLIED & MOUNTED BY PRICE.
 - CLEAN, DRY, 20 PSI (138 KPa) CONTROL AIR REQUIRED.
 - TOTAL FLOW SENSOR TUBES EXIT ON HOT DECK SIDE.
- ** 6” DIAMETER DUCT WITH 4” OR 5” REDUCER.

OPTIONS:

- PNEUMATIC ACTUATOR SUPPLIED BY CONTROL CONTRACTOR & MOUNTED BY PRICE.
- CONTROLLER COVER.

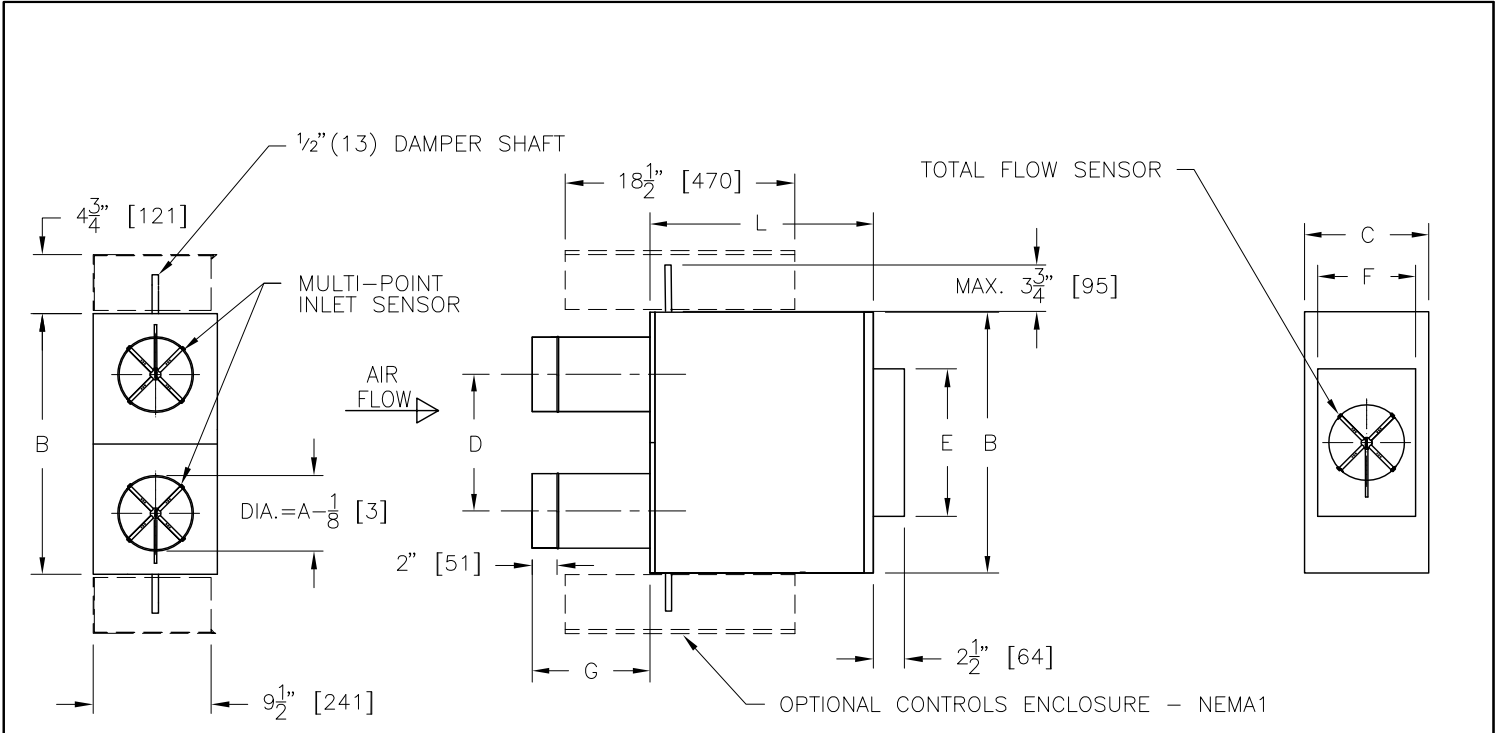
LINERS AND CONSTRUCTION OPTIONS:

- 1”(25mm) FIBERGLASS
- FF FF1
- FF50 CRWF
- CRAF FB
- SM PM
- AFPM



ALL METRIC DIMENSIONS () ARE SOFT CONVERTED. IMPERIAL DIMENSIONS ARE CONVERTED TO METRIC AND ROUNDED TO THE NEAREST MILLIMETER.

PROJECT:		PRICE®	
ENGINEER:			
CUSTOMER:		BG	DPS8000 DUAL DUCT CONSTANT & VARIABLE PNEUMATIC CONTROL PRESSURE INDEPENDENT
SUBMITTAL DATE:		227813	
SPEC. SYMBOL:		2010/12/22	



UNIT SIZE	MAX CFM	MAX L/S	IMPERIAL UNITS (Inches)								SI UNITS (mm)							
			INLET A	B	C	D	OUTLET		L	G	INLET A	B	C	D	OUTLET		L	G
							E	F							E	F		
4	225	106	4**	21	10	11	11 7/8	7 7/8	18	11 1/2	102	533	254	279	302	200	457	292
5	350	165	5**							11 1/2	127							292
6	400	189	6							9 1/2	152							241
7	550	259	7							9 1/2	178							241
8	750	354	8	25	12 1/2	13	13 3/8	12 3/8	9 1/2	203	635	318	330	352	314	508	241	
9	1000	472	9						9 1/2	229							241	
10	1300	613	10						9 1/2	251							241	
12	1900	896	12	29	15	15	15 7/8	14 7/8	28	9 1/2	305	737	381	381	403	378	711	241
14	2900	1368	14	40	17 1/2	20 1/8	19 7/8	17 3/8	40 3/8	4 3/8	356	1016	445	511	505	441	1026	111
16	3500	1651	16	48	18	24 1/8	23 7/8	17 7/8	47 1/8	4 3/8	406	1219	457	613	606	454	1197	111

NOTES:

- INTERNAL INSULATION – FIBERGLASS 3/4" (19mm) THICK, MIN. 1.5# DENSITY WHICH MEETS REQUIREMENTS OF NFPA 90A AND UL181.
 - 22 GA. ZINC COATED STEEL HOUSING. MECHANICALLY SEALED AND GASKETED, LEAK RESISTANT CONSTRUCTION.
 - MAXIMUM L/S (CFM) SETTINGS ARE FOR EITHER HOT OR COLD INLETS.
 - TOTAL FLOW SENSOR TUBES EXIT ON HOT DECK SIDE.
 - DIGITAL CONTROLS BY CONTROL CONTRACTOR.
- ** 6" DIAMETER DUCT WITH 4" OR 5" REDUCER.

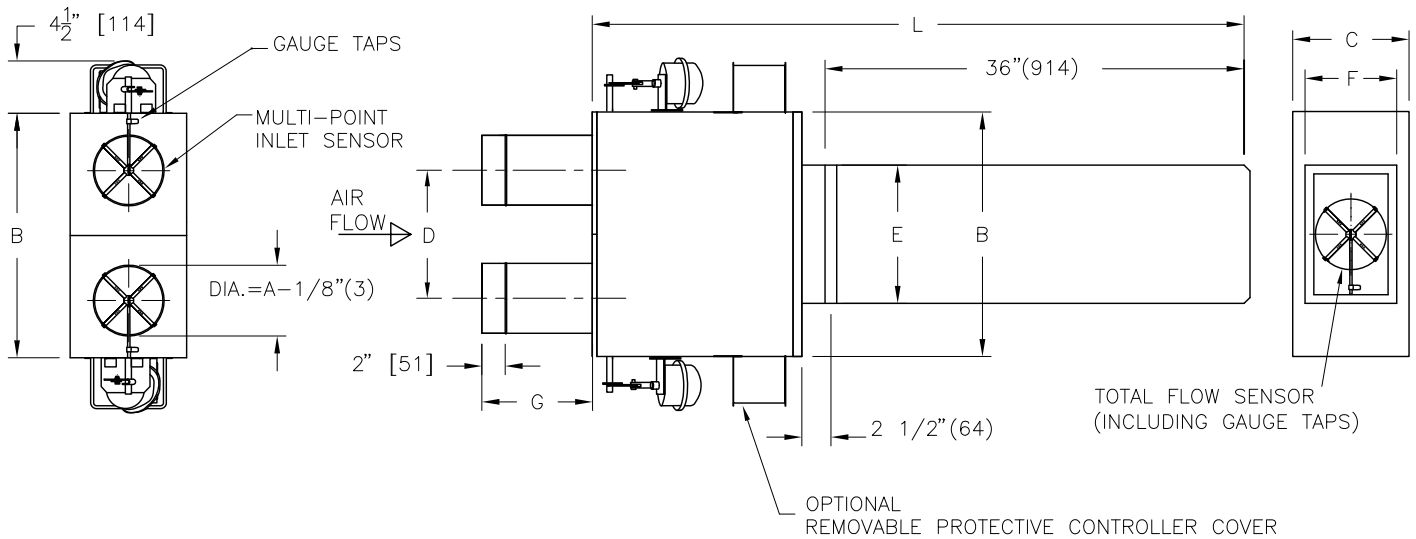
OPTIONS:

- NEMA1 CONTROLS ENCLOSURE
 - DISCONNECT SWITCH.
- LINERS AND CONSTRUCTION OPTIONS:
- 1" (25mm) FIBERGLASS
 - FF FF1
 - FF50 CRWF
 - CRAF FB
 - SM PM
 - AFPM



ALL METRIC DIMENSIONS () ARE SOFT CONVERTED. IMPERIAL DIMENSIONS ARE CONVERTED TO METRIC AND ROUNDED TO THE NEAREST MILLIMETER.

PROJECT:		PRICE®	
ENGINEER:		BG	DDS5000 DUAL DUCT CONSTANT & VARIABLE DIGITAL CONTROLS PRESSURE INDEPENDENT
CUSTOMER:		227814	
SUBMITTAL DATE:	SPEC. SYMBOL:	2011/04/18	



UNT SIZE	MAX CFM	MAX L/S	IMPERIAL UNITS (Inches)							SI UNITS (mm)								
			INLET A	B	C	OUTLET		L	G	INLET A	B	C	OUTLET		L	G		
						D	E						F	D			E	F
4	225	106	4**	21	10	11	11 7/8	7 7/8	56 1/2	11 1/2	533	254	279	302	200	1435	292	
5	350	165	5**							11 1/2							127	292
6	400	189	6							9 1/2							152	241
7	550	259	7							9 1/2							178	241
8	750	354	8	25	12 1/2	13	13 7/8	12 3/8	58 1/2	9 1/2	635	318	330	352	314	1486	241	
9	1000	472	9							9 1/2							229	241
10	1300	613	10	9 1/2	251	241												
12	1900	896	12	29	15	15	15 7/8	14 7/8	66 1/2	9 1/2	737	381	381	403	378	1689	241	
14	2900	1368	14	40	17 1/2	20 1/8	19 7/8	17 3/8	78 7/8	4 3/8	356	1016	445	511	505	441	2003	111
16	3500	1651	16	48	18	24 1/8	23 7/8	17 7/8	85 5/8	4 3/8	406	1219	457	613	606	454	2175	111

NOTES:

- INTERNAL INSULATION – FIBERGLASS 3/4" (19mm) THICK, MIN. 1.5# DENSITY WHICH MEETS REQUIREMENTS OF NFPA 90A AND UL181.
- 22 GA. ZINC COATED STEEL HOUSING. MECHANICALLY SEALED AND GASKETED, LEAK RESISTANT CONSTRUCTION.
- MAXIMUM L/S (CFM) SETTINGS ARE FOR EITHER HOT OR COLD INLETS.
- GAUGE TAPS ARE STANDARD.
- PNEUMATIC ACTUATOR SUPPLIED & MOUNTED BY PRICE.
- CLEAN, DRY, 20 PSI (138 kPa) CONTROL AIR REQUIRED.
- TOTAL FLOW SENSOR TUBES EXIT ON HOT DECK SIDE.

** 6" DIAMETER DUCT WITH 4" OR 5" REDUCER.

OPTIONS:

- PNEUMATIC ACTUATOR SUPPLIED BY CONTROL CONTRACTOR & MOUNTED BY PRICE.
- CONTROLLER COVER.

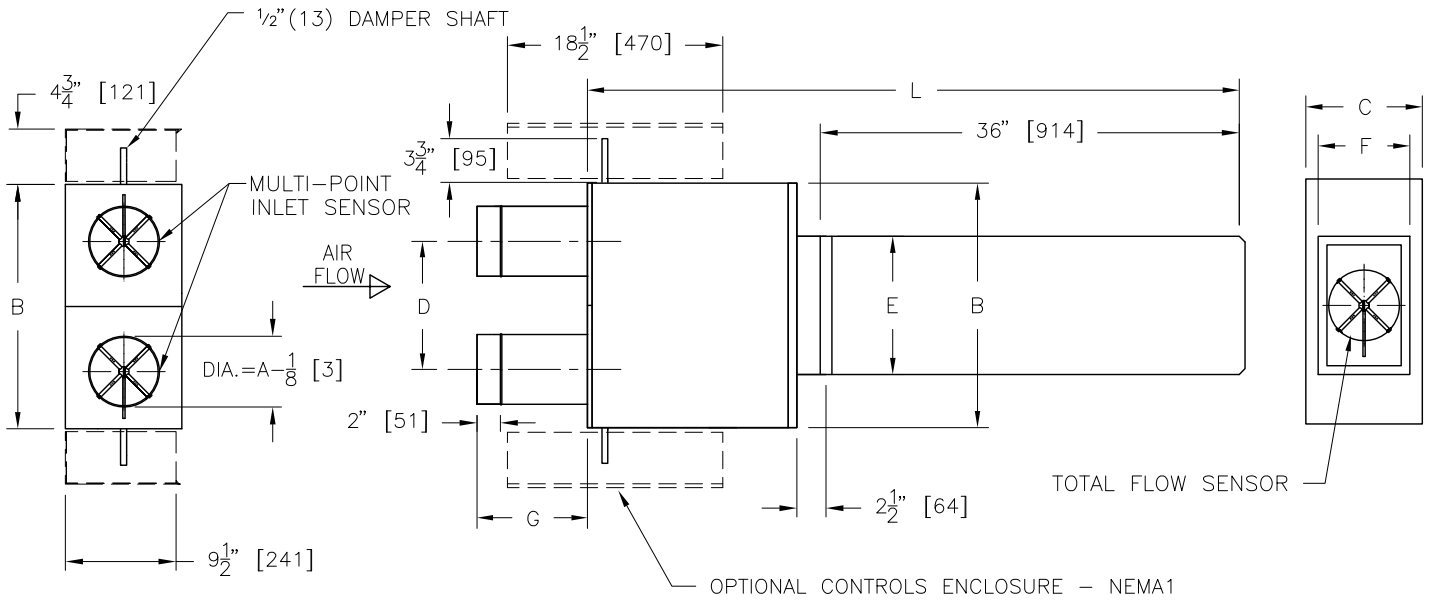
LINERS AND CONSTRUCTION OPTIONS:

- 1" (25mm) FIBERGLASS
- FF CRWF
- FF50 FF1
- CRAF FB
- SM PM
- AFPM



ALL METRIC DIMENSIONS () ARE SOFT CONVERTED. IMPERIAL DIMENSIONS ARE CONVERTED TO METRIC AND ROUNDED TO THE NEAREST MILLIMETER.

PROJECT:		PRICE®	
ENGINEER:		BG	DPQ8000 DUAL DUCT QUIET CONSTANT & VARIABLE PNEUMATIC CONTROLS PRESSURE INDEPENDENT
CUSTOMER:		227816	
SUBMITTAL DATE:	SPEC. SYMBOL:	2010/12/22	



UNIT SIZE	MAX CFM	MAX L/S	IMPERIAL UNITS (Inches)								SI UNITS (mm)							
			INLET	B	C	D	OUTLET		L	G	INLET	B	C	D	OUTLET		L	G
			A				E	F			A				E	F		
4	225	106	4**							11 1/2	102							292
5	350	165	5**							11 1/2	127							292
6	400	189	6	21	10	11	11 7/8	7 7/8	56 1/2	9 1/2	152	533	254	279	302	200	1435	241
7	550	259	7							9 1/2	178							241
8	750	354	8					9 7/8		9 1/2	203					251		241
9	1000	472	9	25	12 1/2	13	13 7/8	12 3/8	58 1/2	9 1/2	229	635	318	330	352	314	1486	241
10	1300	613	10							9 1/2	251							241
12	1900	896	12	29	15	15	15 7/8	14 7/8	66 1/2	9 1/2	305	737	381	381	403	378	1689	241
14	2900	1368	14	40	17 1/2	20 1/8	19 7/8	17 3/8	78 7/8	4 3/8	356	1016	445	511	505	441	2003	111
16	3500	1651	16	48	18	24 1/8	23 7/8	17 7/8	85 5/8	4 3/8	406	1219	457	613	606	454	2175	111

NOTES:

- INTERNAL INSULATION – FIBERGLASS 3/4" (19mm) THICK, MIN. 1.5# DENSITY WHICH MEETS REQUIREMENTS OF NFPA 90A AND UL181.
- 22 GA. ZINC COATED STEEL HOUSING. MECHANICALLY SEALED AND GASKETED, LEAK RESISTANT CONSTRUCTION.
- MAXIMUM L/S (CFM) SETTINGS ARE FOR EITHER HOT OR COLD INLETS.
- TOTAL FLOW SENSOR TUBES EXIT ON HOT DECK SIDE.
- DIGITAL CONTROLS BY CONTROL CONTRACTOR

** 6" DIAMETER DUCT WITH 4" OR 5" REDUCER.

OPTIONS:

- CONTROLS ENCLOSURE
- DISCONNECT SWITCH

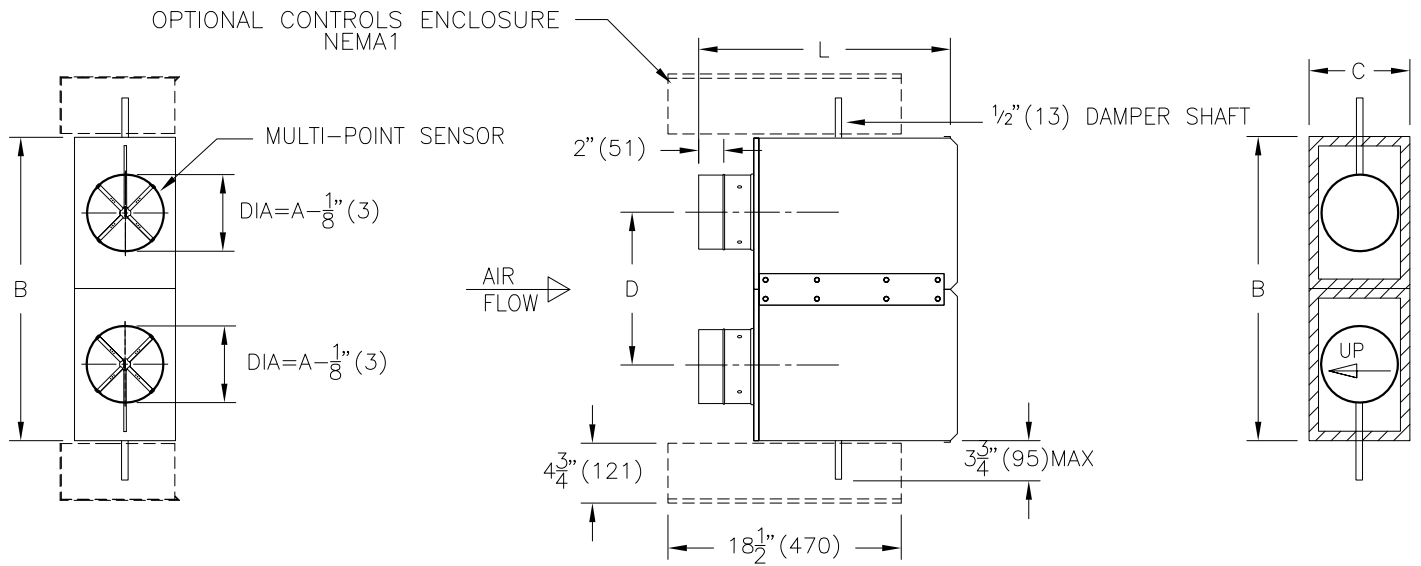
LINERS AND CONSTRUCTION OPTIONS:

- 1" (25mm) FIBERGLASS
- FF FF50
- CRAF FF1
- CRWF FB
- SM PM
- AFPM



ALL METRIC DIMENSIONS () ARE SOFT CONVERTED. IMPERIAL DIMENSIONS ARE CONVERTED TO METRIC AND ROUNDED TO THE NEAREST MILLIMETER.

PROJECT:		PRICE®	
ENGINEER:			
CUSTOMER:		BG	DDQ5000 DUAL DUCT QUIET CONSTANT & VARIABLE DIGITAL CONTROLS PRESSURE INDEPENDENT
SUBMITTAL DATE:		227817	
SPEC. SYMBOL:		2011/04/19	



UNIT SIZE	MAX L/S	MAX CFM	SI UNITS (mm)					IMPERIAL UNITS (Inches)				
			INLET A	B	C	D	L	INLET A	B	C	D	L
4	106	225	102	613	203	308	562	4**	24 1/8	8	12 1/8	22 1/8
5	165	350	127					5**				
6	212	450	152		254	511	6	10				
7	307	650	178				7					
8	378	800	203	714	318	359	8	28 1/8	12 1/2	14 1/8	20 1/8	
9	496	1050	229				9					
10	637	1350	254				10					
12	991	2100	305	816	381	410	12	32 1/8	15	16 1/8	23 5/8	
14	1416	3000	356	1019	445	511	14	40 1/8	17 1/2	20 1/8		
16	1888	4000	406	1222	457	613	16	48 1/8	18	24 1/8		

** 6" DIAMETER DUCT WITH 4" OR 5" REDUCER.

NOTES:

- INTERNAL INSULATION FIBERGLASS 1/2" (13mm) THICK 1.5# DENSITY WHICH MEETS REQUIREMENTS OF NFPA 90A AND UL181.
- 22GA. ZINC COATED STEEL HOUSING. MECHANICALLY SEALED AND GASKETED, LEAK RESISTANT CONSTRUCTION.
- RECTANGULAR DISCHARGE OPENING WITH SLIP AND DRIVE CLEAT DUCT CONNECTION.
- DIGITAL CONTROLS BY CONTROL CONTRACTOR.

DDV5000 INCLUDES:

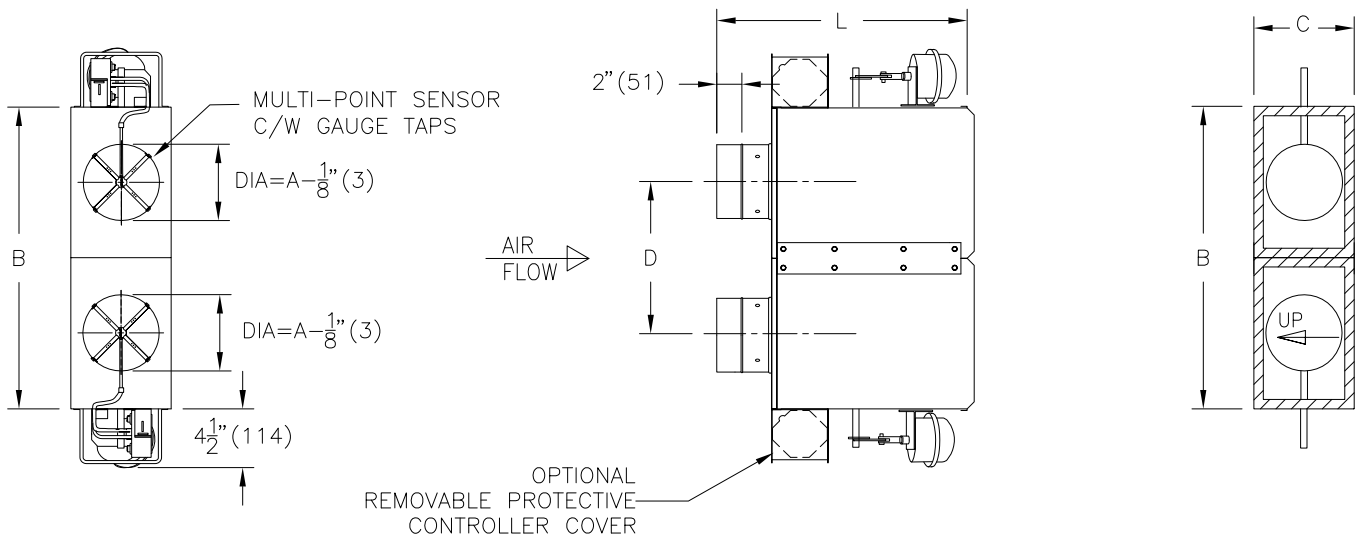
- MULTI-POINT SENSOR SUPPLIED BY PRICE.

OPTIONS:

- NEMA1 CONTROLS ENCLOSURE
- DISCONNECT SWITCH
- LINERS AND CONSTRUCTION OPTIONS:
 - 3/4" (19mm) FIBERGLASS 1" (25mm) FIBERGLASS
 - FF FF50 FF1
 - WFPM AFPM LL
 - CRAF CRWF FB
 - SM PM AFPM

ALL METRIC DIMENSIONS () ARE SOFT CONVERTED. IMPERIAL DIMENSIONS ARE CONVERTED TO METRIC AND ROUNDED TO THE NEAREST MILLIMETER.

PROJECT:		PRICE®	
ENGINEER:		<i>BG</i>	DDV5000 DUAL DUCT VARIABLE VOLUME DIGITAL CONTROL BY OTHERS
CUSTOMER:		243574	
SUBMITTAL DATE:	SPEC. SYMBOL:	2011/10/25	



UNIT SIZE	MAX L/S	MAX CFM	SI UNITS (mm)					IMPERIAL UNITS (Inches)				
			INLET A	B	C	D	L	INLET A	B	C	D	L
4	106	225	102	613	203	308	562	4	24 1/8	8	12 1/8	22 1/8
5	165	350	127					5				
6	212	450	152					6				
7	307	650	178		7							
8	378	800	203		8							
9	496	1050	229	714	318	359	511	9	10	12 1/2	14 1/8	20 1/8
10	637	1350	254					10				
12	991	2100	305					816				
14	1416	3000	356	1019	445	511	600	14	32 1/8	17 1/2	20 1/8	23 5/8
16	1888	4000	406	1222	457	613		16	40 1/8	18	24 1/8	

NOTES:

- INTERNAL INSULATION – FIBERGLASS 1/2" (13mm) THICK MIN. 1.5# DENSITY WHICH MEETS REQUIREMENTS OF NFPA 90A AND UL181.
- 22 GA. ZINC COATED STEEL HOUSING. MECHANICALLY SEALED AND GASKETED, LEAK RESISTANT CONSTRUCTION.
- RECTANGULAR DISCHARGE OPENING WITH SLIP AND DRIVE CLEAT DUCT CONNECTION.
- GAUGE TAPS ARE STANDARD.
- PNEUMATIC ACTUATOR SUPPLIED & MOUNTED BY PRICE.
- CLEAN, DRY, 20 PSI (138 KPa) CONTROL AIR REQUIRED.

OPTIONS:

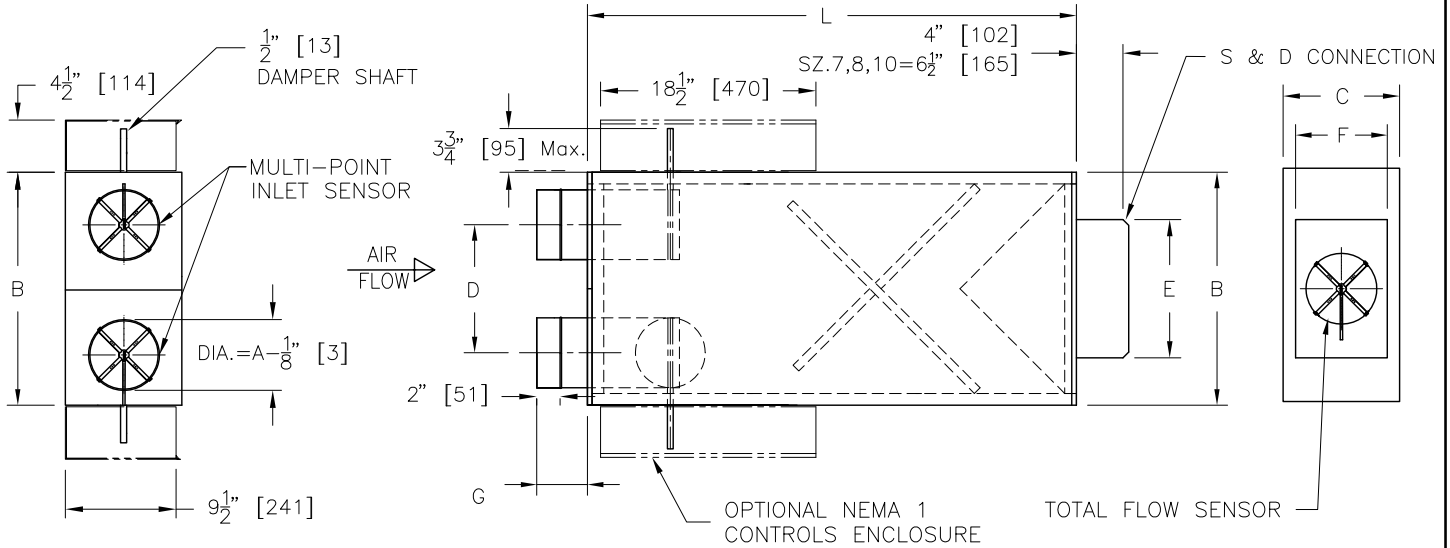
- OTHER PNEUMATIC ACTUATORS SUPPLIED & MOUNTED BY PRICE.
- PNEUMATIC ACTUATOR SUPPLIED BY CONTROL CONTRACTOR & MOUNTED BY PRICE.
- PROTECTIVE CONTROLLER COVER.

LINERS AND CONSTRUCTION OPTIONS:

- 3/4" (19mm) FIBERGLASS
- 1" (25mm) FIBERGLASS
- FF
- FF50
- FF1
- WFPM
- AFPM
- LL
- CRAF
- CRWF
- FB
- SM
- PM
- AFPM

ALL METRIC DIMENSIONS () ARE SOFT CONVERTED. IMPERIAL DIMENSIONS ARE CONVERTED TO METRIC AND ROUNDED TO THE NEAREST MILLIMETER.

PROJECT:		PRICE [®]	
ENGINEER:		BG	DPV8000 DUAL DUCT VARIABLE VOLUME PNEUMATIC CONTROL PRESSURE INDEPENDENT
CUSTOMER:		243575	
SUBMITTAL DATE:	SPEC. SYMBOL:	2011/10/25	



UNIT SIZE	MAX CFM	MAX L/S	IMPERIAL UNITS (inches)								SI UNITS (mm)									
			INLET		B	C	D	OUTLET		L	G	INLET		B	C	D	OUTLET		L	G
			A					E	F			A					E	F		
4	225	106	4								102								162	
5	350	165	5								127									
6	400	189	6	24	12 1/2	15 1/2	11 7/8	7 7/8	47	6 3/8	152	610	318	394	302	200	1194			
7	550	259	7								14 1/2									9 7/8
8	750	354	8								203									
9	1000	472	9	32	15	20 1/2	13 7/8	12 3/8	55	4 3/8	229	813	381	521	352	314	1397			
10	1300	613	10								15 1/2									394
12	1900	896	12	40	17 1/2	19 5/8	15 7/8	14 7/8	60		305	1016	445	498	403	378	1524			
14	2900	1368	14								19 5/8									19 7/8
16	3500	1651	16	48	18	24 1/8	23 7/8	17 7/8	72		406	1219	457	613	606	454	1829			

NOTES:

- INTERNAL INSULATION 3/4" (19mm) 1.5LB DENSITY FIBERGLASS WHICH MEETS REQUIREMENTS OF NFPA 90A, UL181, AND ASTM C-665.
- 22 GA. ZINC COATED STEEL HOUSING. MECHANICALLY SEALED AND GASKETED, LEAK RESISTANT CONSTRUCTION.
- MAXIMUM L/S (CFM) SETTINGS ARE FOR EITHER HOT OR COLD INLETS.
- TOTAL FLOW SENSOR TUBES EXIT ON HOT DECK SIDE.
- DIGITAL CONTROLS BY CONTROL CONTRACTOR

OPTIONS:

- NEMA1 CONTROLS ENCLOSURE
- DISCONNECT SWITCH

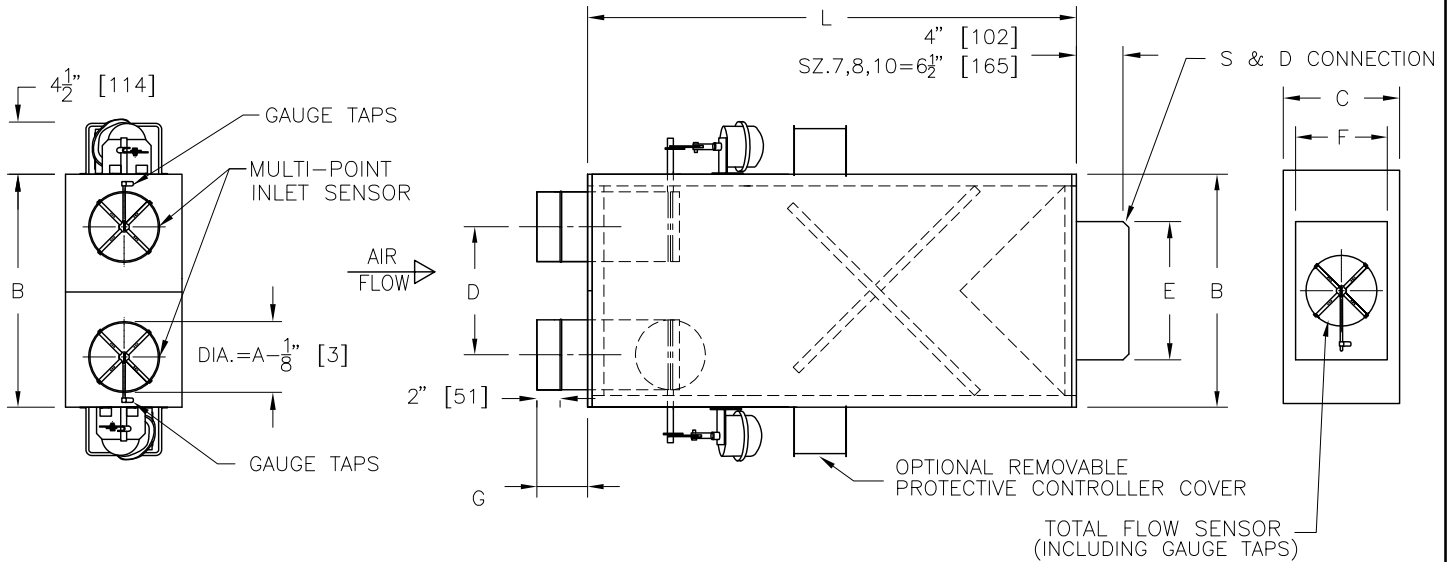
LINERS:

- FF
- FF50
- FF1
- CRAF
- CRWF
- 1" (25) FIBERGLASS
- FB
- SM
- PM
- AFPM



ALL METRIC DIMENSIONS () ARE SOFT CONVERTED. IMPERIAL DIMENSIONS ARE CONVERTED TO METRIC AND ROUNDED TO THE NEAREST MILLIMETER.

PROJECT:		PRICE®	
ENGINEER:			
CUSTOMER:		245966	DDM5000 DUAL DUCT HIGH MIXING DIGITAL CONTROLS PRESSURE INDEPENDENT
SUBMITTAL DATE:	SPEC. SYMBOL:	2011/04/19	



UNIT SIZE	MAX CFM	MAX L/S	IMPERIAL UNITS (Inches)								SI UNITS (mm)									
			INLET				OUTLET				L	G	INLET				OUTLET			
			A	B	C	D	E	F	A	B			C	D	E	F	L	G		
4	225	106	4	24	12 1/2	15 1/2	11 7/8	7 7/8	47	6 3/8	102	610	318	394	302	200	1194	162		
5	350	165	5								127									
6	400	189	6								152								251	
7	550	259	7								178									
8	750	354	8	13 1/2	9 7/8	368	813	381	521	352	314	1397	111							
9	1000	472	9	20 1/2		12 3/8								343						
10	1300	613	10	15 1/2	14 7/8									229	1016	445	394	403	378	1524
12	1900	896	12	19 5/8		17 3/8								251						
14	2900	1368	14	19 5/8	17 3/8		305	498	505	441										
16	3500	1651	16	24 1/8		356	406				1219	457	613	606	454	1829				

NOTES:

- INTERNAL INSULATION 3/4" (19mm) 1.5LB DENSITY FIBERGLASS WHICH MEETS REQUIREMENTS OF NFPA 90A, UL181, AND ASTM C-665.
- 22 GA. ZINC COATED STEEL HOUSING. MECHANICALLY SEALED AND GASKETED, LEAK RESISTANT CONSTRUCTION.
- MAXIMUM L/S (CFM) SETTINGS ARE FOR EITHER HOT OR COLD INLETS.
- TOTAL FLOW SENSOR TUBES EXIT ON HOT DECK SIDE.
- GAUGE TAPS ARE STANDARD.
- PNEUMATIC ACTUATOR SUPPLIED & MOUNTED BY PRICE.
- CLEAN, DRY, 20 PSI (138 KPa) CONTROL AIR REQUIRED.

OPTIONS:

- PNEUMATIC ACTUATOR SUPPLIED BY CONTROL CONTRACTOR & MOUNTED BY PRICE.
- CONTROLLER COVER.

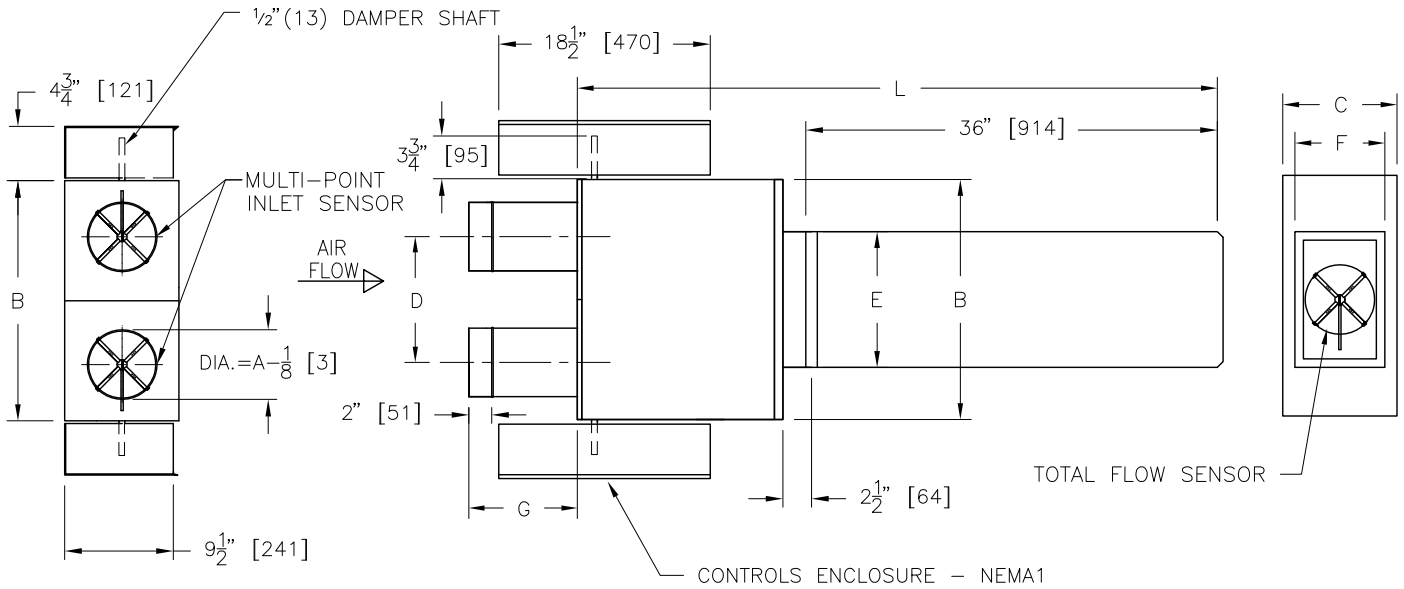
LINERS:

- FF
- FF50
- FF1
- CRAF
- CRWF
- 1" (25) FIBERGLASS
- FB
- SM
- PM
- AFPM



ALL METRIC DIMENSIONS () ARE SOFT CONVERTED. IMPERIAL DIMENSIONS ARE CONVERTED TO METRIC AND ROUNDED TO THE NEAREST MILLIMETER.

PROJECT:		PRICE [®]	
ENGINEER:			
CUSTOMER:		BG	DPM8000 DUAL DUCT HIGH MIXING PNEUMATIC CONTROLS PRESSURE INDEPENDENT
SUBMITTAL DATE:		245967	
SPEC. SYMBOL:		2010/12/22	



UNIT SIZE	MAX CFM	MAX L/S	IMPERIAL UNITS (Inches)							SI UNITS (mm)								
			INLET A	B	C	OUTLET		L	G	INLET A	B	C	D	OUTLET		L	G	
						E	F							E	F			
4	225	106	4**							11 1/2	102						292	
5	350	165	5**							11 1/2	127						292	
6	400	189	6	21	10	11	11 7/8	7 7/8	56 1/2	9 1/2	152	533	254	279	302	200	1435	241
7	550	259	7							9 1/2	178							241
8	750	354	8							9 1/2	203							241
9	1000	472	9	25	12 1/2	13	13 7/8	12 3/8	58 1/2	9 1/2	229	635	318	330	352	314	1486	241
10	1300	613	10							9 1/2	251							241
12	1900	896	12	29	15	15	15 7/8	14 7/8	66 1/2	9 1/2	305	737	381	381	403	378	1689	241
14	2900	1368	14	40	17 1/2	20 1/8	19 7/8	17 3/8	78 7/8	4 3/8	356	1016	445	511	505	441	2003	111
16	3500	1651	16	48	18	24 1/8	23 7/8	17 7/8	85 5/8	4 3/8	406	1219	457	613	606	454	2175	111

6" DIAMETER DUCT WITH 4" OR 5" REDUCER.

NOTES:

- INTERNAL INSULATION – FIBERGLASS 3/4" (19mm) THICK, MIN. 1.5# DENSITY WHICH MEETS REQUIREMENTS OF NFPA 90A AND UL181.
- 22 GA. ZINC COATED STEEL HOUSING. MECHANICALLY SEALED AND GASKETED, LEAK RESISTANT CONSTRUCTION.
- MAXIMUM L/S (CFM) SETTINGS ARE FOR EITHER HOT OR COLD INLETS.
- TOTAL FLOW SENSOR TUBES EXIT ON HOT DECK SIDE.
- DDQ8000 INCLUDES:
 - DUAL MULTI-POINT SENSOR BY PRICE
 - PRICE CONTROLS FACTORY MOUNTED
 - PRICE THERMOSTAT FIELD MOUNTED

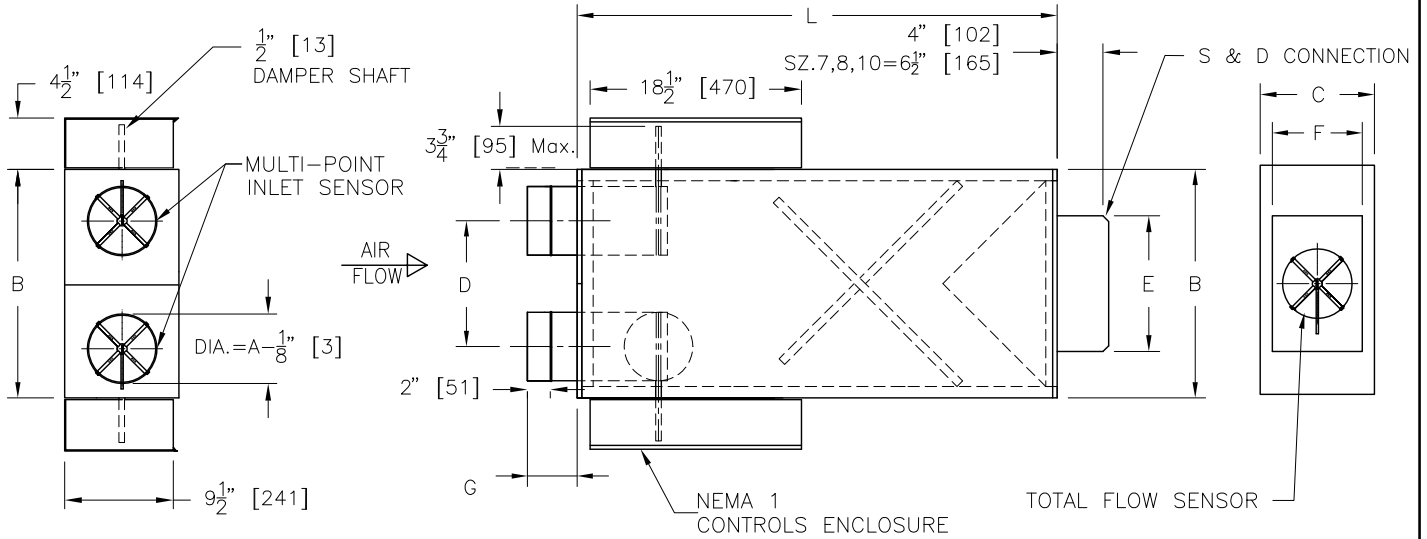
OPTIONS:

- DISCONNECT SWITCH
- LINERS AND CONSTRUCTION OPTIONS:
 - 1" (25mm) FIBERGLASS
 - FF
 - FF50
 - FB
 - CRAF
 - CRWF
 - SM
 - PM
 - AFPM



ALL METRIC DIMENSIONS () ARE SOFT CONVERTED. IMPERIAL DIMENSIONS ARE CONVERTED TO METRIC AND ROUNDED TO THE NEAREST MILLIMETER.

PROJECT:		PRICE®	
ENGINEER:		BG	DDQ8000
CUSTOMER:		253227	DUAL DUCT QUIET CONSTANT & VARIABLE PRICE CONTROLS PRESSURE INDEPENDENT
SUBMITTAL DATE:	SPEC. SYMBOL:	2011/04/19	



UNIT SIZE	MAX CFM	MAX L/S	IMPERIAL UNITS (Inches)								SI UNITS (mm)							
			INLET		B	C	OUTLET		L	G	INLET		B	C	OUTLET		L	G
			A	D			E	F			A	D			E	F		
4	225	106	4							6 3/8	102						162	
5	350	165	5			15 1/2		7 7/8			127							
6	400	189	6	24	12 1/2		11 7/8	9 7/8	47	6 3/8	152	610	318		302	200	1194	
7	550	259	7			14 1/2												
8	750	354	8			13 1/2					203							
9	1000	472	9	32	15	20 1/2	13 7/8	12 3/8	55	4 3/8	229	813	381		352	314	1397	
10	1300	613	10			15 1/2												
12	1900	896	12	40	17 1/2	19 5/8	15 7/8	14 7/8	60	4 3/8	305	1016	445		498	403	378	1524
14	2900	1368	14			19 5/8	19 7/8	17 3/8						356		498	505	
16	3500	1651	16	48	18	24 1/8	23 7/8	17 7/8	72		406	1219	457	613	606	454	1829	

NOTES:

- INTERNAL INSULATION 3/4" (19mm) 1.5LB DENSITY FIBERGLASS WHICH MEETS REQUIREMENTS OF NFPA 90A, UL181, AND ASTM C-665.
- 22 GA. ZINC COATED STEEL HOUSING. MECHANICALLY SEALED AND GASKETED, LEAK RESISTANT CONSTRUCTION.
- MAXIMUM L/S (CFM) SETTINGS ARE FOR EITHER HOT OR COLD INLETS.
- TOTAL FLOW SENSOR TUBES EXIT ON HOT DECK SIDE.
- DDM8000 INCLUDES:
 - DUAL MULTI-POINT SENSOR BY PRICE
 - PRICE CONTROLS FACTORY MOUNTED
 - PRICE THERMOSTAT FIELD MOUNTED

OPTIONS:

- DISCONNECT SWITCH

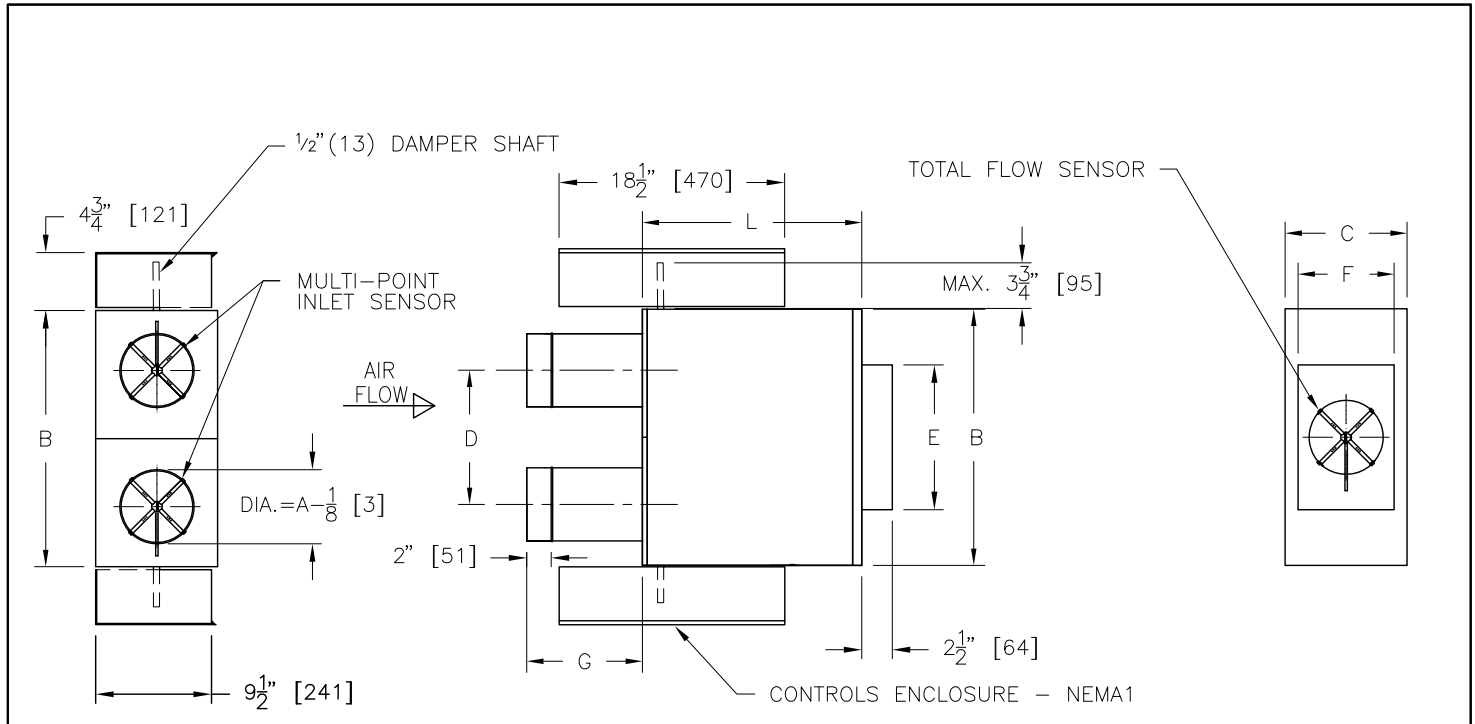
LINERS:

- 1" (25) FIBERGLASS
- FF50
- FF
- CRAF
- CRWF
- FB
- SM
- PM
- AFPM



ALL METRIC DIMENSIONS () ARE SOFT CONVERTED. IMPERIAL DIMENSIONS ARE CONVERTED TO METRIC AND ROUNDED TO THE NEAREST MILLIMETER.

PROJECT:		PRICE®	
ENGINEER:		BG	DDM8000 DUAL DUCT HIGH MIXING PRICE CONTROLS PRESSURE INDEPENDENT
CUSTOMER:		253228	
SUBMITTAL DATE:	SPEC. SYMBOL:	2011/04/19	



UNIT SIZE	MAX CFM	MAX L/S	IMPERIAL UNITS (Inches)								SI UNITS (mm)								
			INLET	B	C	D		OUTLET		L	G	INLET	B	C	D	OUTLET		L	G
			A				E	F			A				E	F			
4	225	106	4**								11 1/2	102						292	
5	350	165	5**								11 1/2	127						292	
6	400	189	6	21	10	11	11 7/8	7 7/8	18	9 1/2	152	533	254	279	302	200	457	241	
7	550	259	7																9 1/2
8	750	354	8					9 7/8		9 1/2	203				251		241		
9	1000	472	9	25	12 1/2	13	13 3/8	12 3/8	20	9 1/2	229	635	318	330	352	314	508	241	
10	1300	613	10																9 1/2
12	1900	896	12	29	15	15	15 7/8	14 7/8	28	9 1/2	305	737	381	381	403	378	711	241	
14	2900	1368	14	40	17 1/2	20 1/8	19 7/8	17 3/8	40 3/8	4 3/8	356	1016	445	511	505	441	1026	111	
16	3500	1651	16	48	18	24 1/8	23 7/8	17 7/8	47 1/8	4 3/8	406	1219	457	613	606	454	1197	111	

NOTES:

- INTERNAL INSULATION - FIBERGLASS 3/4" (19mm) THICK, MIN. 1.5# DENSITY WHICH MEETS REQUIREMENTS OF NFPA 90A AND UL181.
- 22 GA. ZINC COATED STEEL HOUSING. MECHANICALLY SEALED AND GASKETED, LEAK RESISTANT CONSTRUCTION.
- MAXIMUM L/S (CFM) SETTINGS ARE FOR EITHER HOT OR COLD INLETS.
- TOTAL FLOW SENSOR TUBES EXIT ON HOT DECK SIDE.
- DDS8000 INCLUDES:
 - DUAL MULTI-POINT SENSOR BY PRICE
 - PRICE CONTROLS FACTORY MOUNTED
 - PRICE THERMOSTAT FIELD MOUNTED

OPTIONS:

DISCONNECT SWITCH.

LINERS AND CONSTRUCTION OPTIONS:

1" (25mm) FIBERGLASS

FF CRWF

FF50 FB

CRAF AFPM

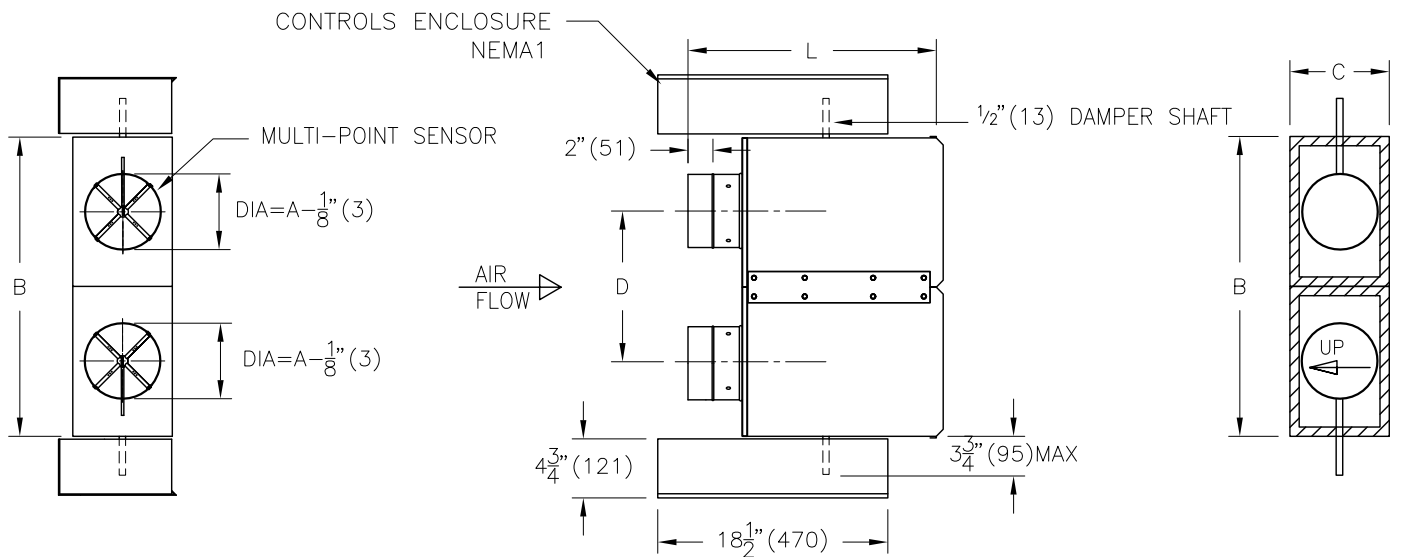
SM PM

** 6" DIAMETER DUCT WITH 4" OR 5" REDUCER.



ALL METRIC DIMENSIONS () ARE SOFT CONVERTED. IMPERIAL DIMENSIONS ARE CONVERTED TO METRIC AND ROUNDED TO THE NEAREST MILLIMETER.

PROJECT:		PRICE®	
ENGINEER:		BE	DDS8000 DUAL DUCT CONSTANT & VARIABLE PRICE CONTROLS PRESSURE INDEPENDENT
CUSTOMER:		253229	
SUBMITTAL DATE:	SPEC. SYMBOL:	2011/04/19	



UNIT SIZE	MAX L/S	MAX CFM	SI UNITS (mm)					IMPERIAL UNITS (Inches)					
			INLET A	B	C	D	L	INLET A	B	C	D	L	
4	106	225	102	613	203	308	562	4**	24 1/8	8	12 1/8	22 1/8	
5	165	350	127					5					
6	212	450	152				511	6					10
7	307	650	178					7					
8	378	800	203	714	318	359	8	28 1/8	12 1/2	14 1/8	20 1/8		
9	496	1050	229				9						
10	637	1350	254				10						
12	991	2100	305	816	381	410	600	12	32 1/8	15	16 1/8	23 5/8	
14	1416	3000	356	1019	445	511		14	40 1/8	17 1/2	20 1/8		
16	1888	4000	406	1222	457	613		16	48 1/8	18	24 1/8		

** 6" DIAMETER DUCT WITH 4" OR 5" REDUCER.

NOTES:

- INTERNAL INSULATION FIBERGLASS 1/2" (13mm) THICK 1.5# DENSITY WHICH MEETS REQUIREMENTS OF NFPA 90A AND UL181.
- 22GA. ZINC COATED STEEL HOUSING. MECHANICALLY SEALED AND GASKETED, LEAK RESISTANT CONSTRUCTION.
- RECTANGULAR DISCHARGE OPENING WITH SLIP AND DRIVE CLEAT DUCT CONNECTION.
- DDV8000 INCLUDES:
 - DUAL MULTI-POINT SENSOR BY PRICE
 - PRICE CONTROLS FACTORY MOUNTED
 - PRICE THERMOSTAT FIELD MOUNTED

OPTIONS:

- DISCONNECT SWITCH

LINERS AND CONSTRUCTION OPTIONS:

- 3/4" (19mm) FIBERGLASS
- 1" (25mm) FIBERGLASS
- FF
- FF50
- PM
- SM
- WFPM
- AFPM
- LL
- FB
- CRAF
- CRWF
- SM
- PM
- AFPM

ALL METRIC DIMENSIONS () ARE SOFT CONVERTED. IMPERIAL DIMENSIONS ARE CONVERTED TO METRIC AND ROUNDED TO THE NEAREST MILLIMETER.

PROJECT:		PRICE®	
ENGINEER:		BE	DDV8000 DUAL DUCT VARIABLE VOLUME PRICE CONTROLS PRESSURE INDEPENDENT
CUSTOMER:		253230	
SUBMITTAL DATE:	SPEC. SYMBOL:	2011/04/19	