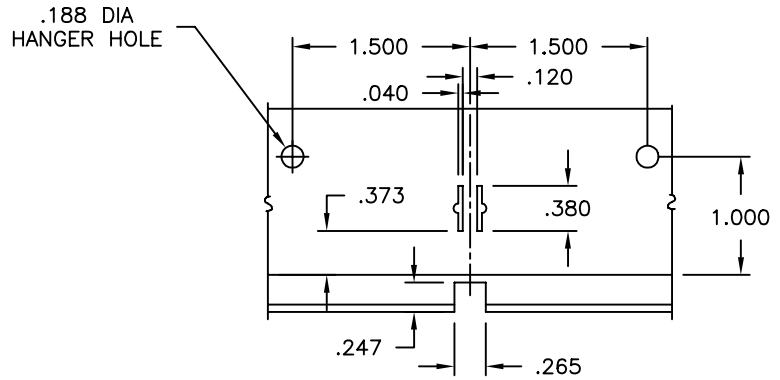
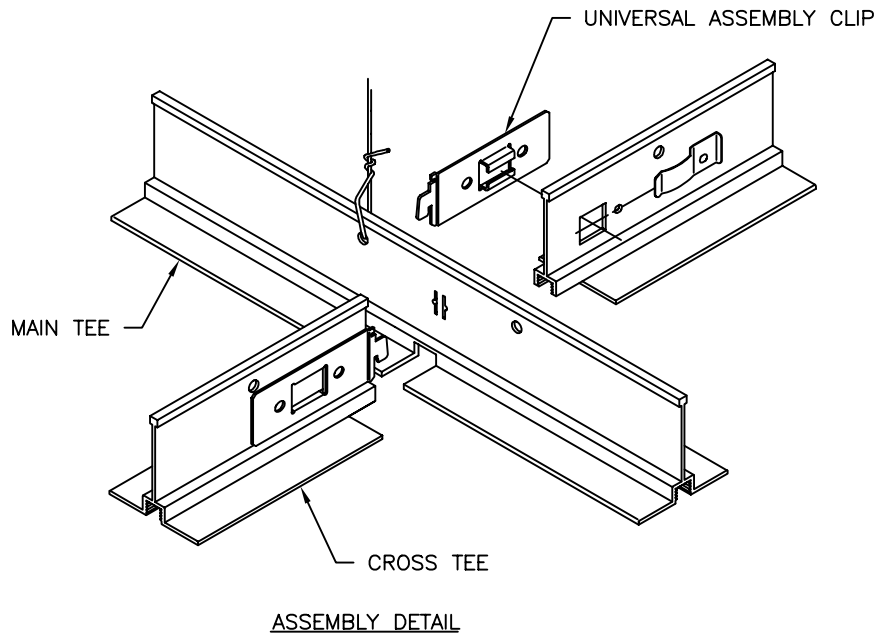
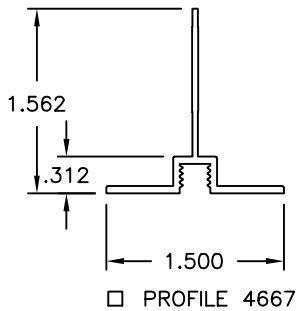
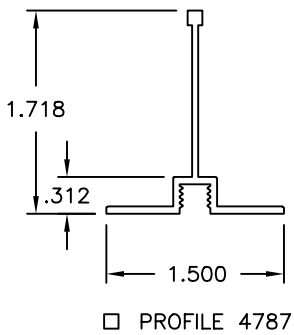


STANDARD END DETAIL



STANDARD REGIMENTATION & TRU-SLOT DETAIL



MATERIAL:

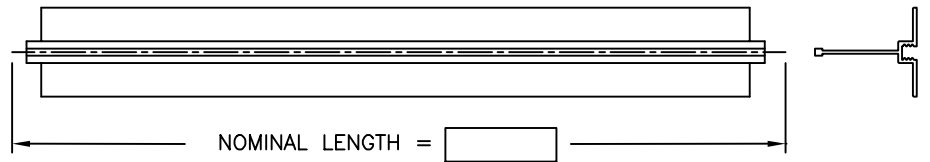
- EXTRUDED ALUMINUM

FINISH:


- B12 WHITE

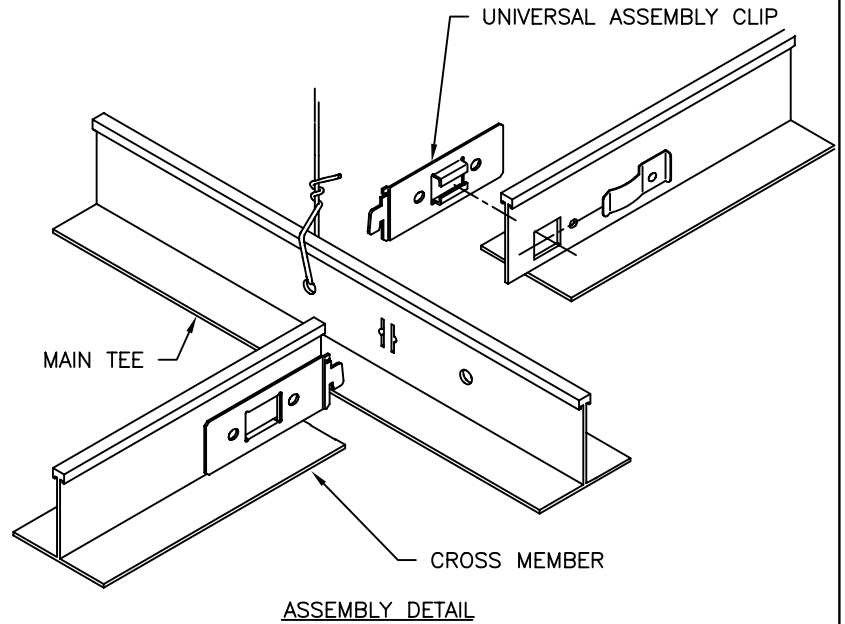
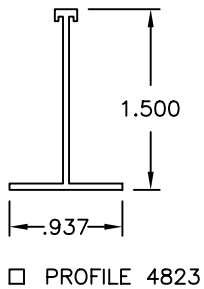
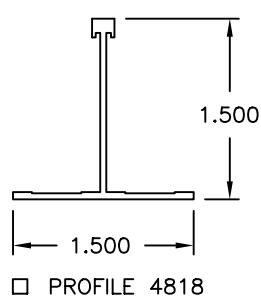
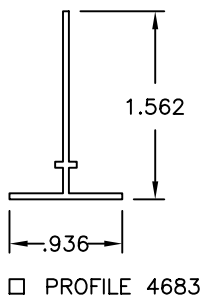
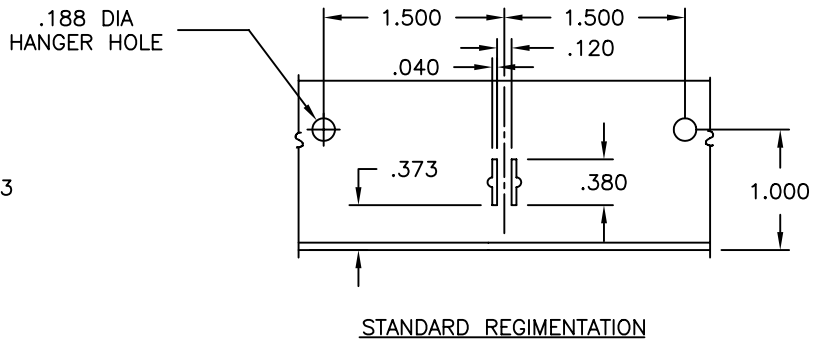
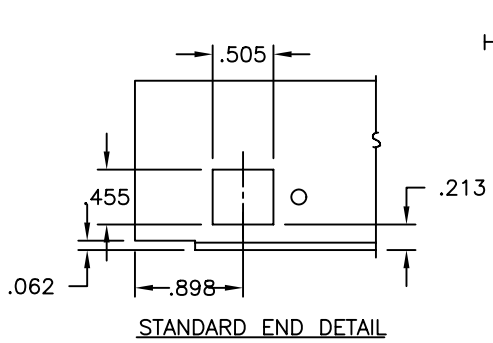
NOTES:

- REGIMENTATION AT O/C
- THROUGH SLOTS AT O/C
- c/w UNIVERSAL ASSEMBLY CLIPS



ALL METRIC DIMENSIONS () ARE SOFT CONVERTED. IMPERIAL DIMENSIONS ARE CONVERTED TO METRIC AND ROUNDED TO THE NEAREST MILLIMETER.

PROJECT:		PRICE[®]	
ENGINEER:			UNITEE
CUSTOMER:		230582	4667 / 4787 CROSS TEE
SUBMITTAL DATE:	SPEC. SYMBOL:	DEC 1999	



MATERIAL:

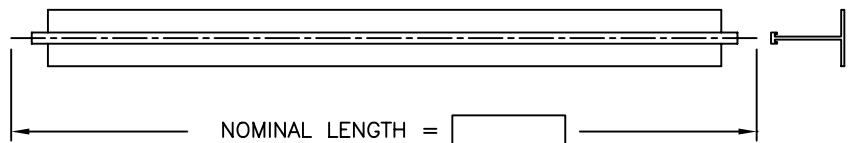
- EXTRUDED ALUMINUM

FINISH:

- B12 WHITE

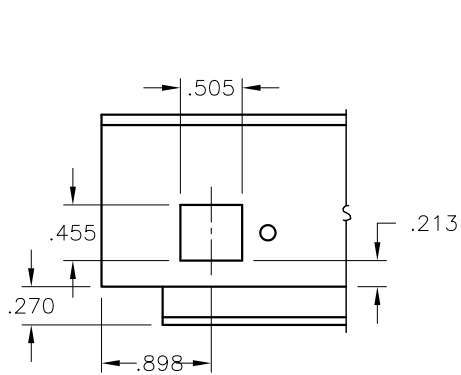
NOTES:

- REGIMENTATION AT O/C
- c/w UNIVERSAL ASSEMBLY CLIPS

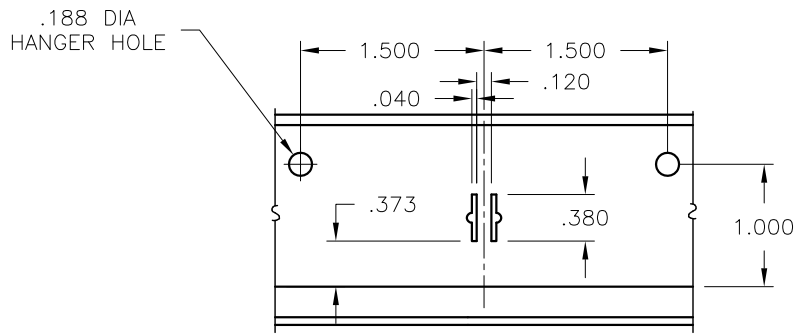


ALL METRIC DIMENSIONS () ARE SOFT CONVERTED. IMPERIAL DIMENSIONS ARE CONVERTED TO METRIC AND ROUNDED TO THE NEAREST MILLIMETER.

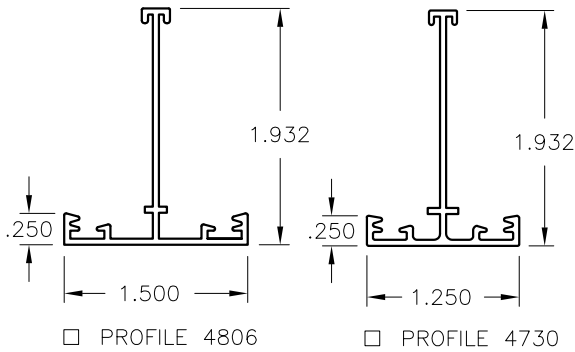
PROJECT:		PRICE®	
ENGINEER:		BG	UNITEE 4683, 4818, 4823 CROSS TEE
CUSTOMER:		230583	
SUBMITTAL DATE:	SPEC. SYMBOL:	JULY 2004	



STANDARD END DETAIL

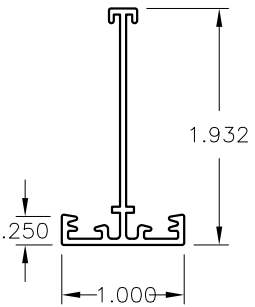


STANDARD REGIMENTATION

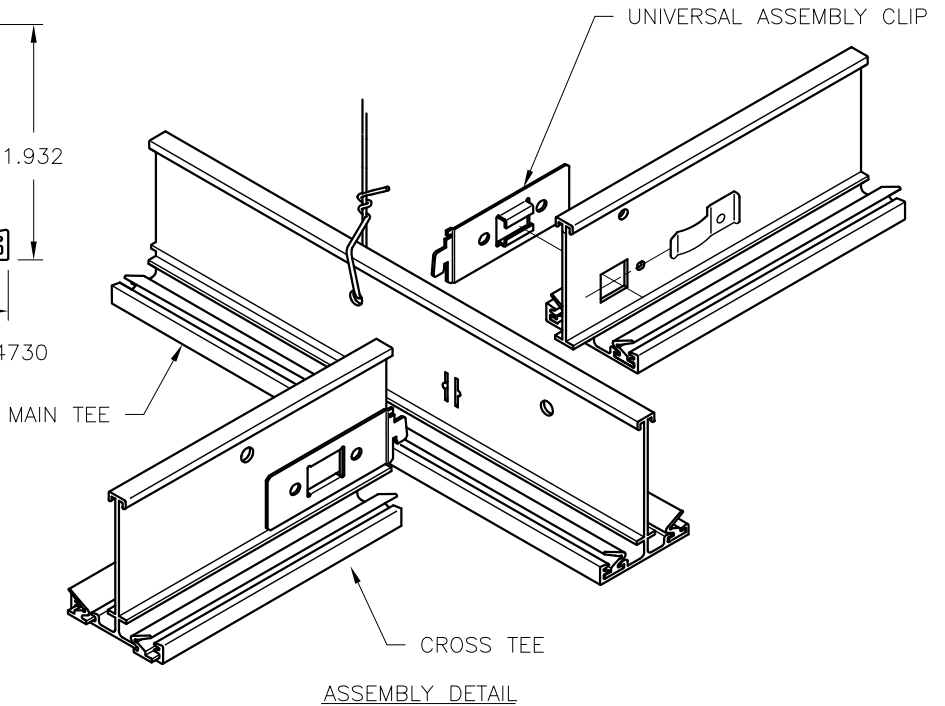


□ PROFILE 4806

□ PROFILE 4730



□ PROFILE 4732



ASSEMBLY DETAIL

MATERIAL:

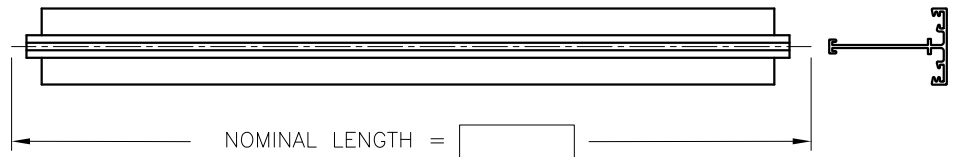
- EXTRUDED ALUMINUM

FINISH:

- B12 WHITE POWDER COAT

NOTES:

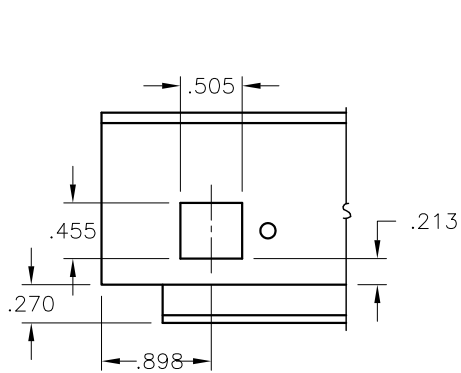
- REGIMENTATION AT O/C
- c/w UNIVERSAL ASSEMBLY CLIPS



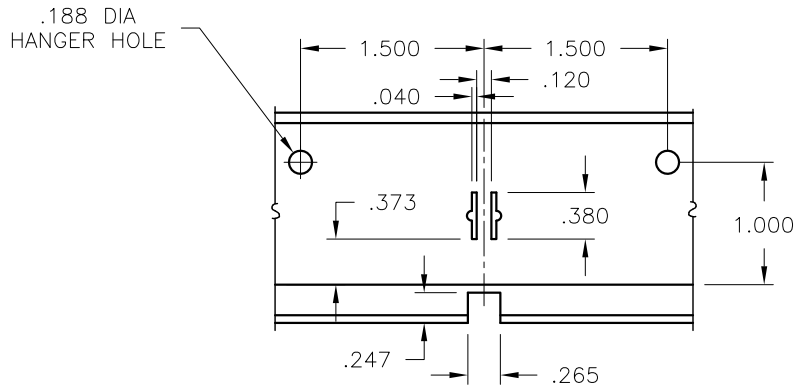
NOMINAL LENGTH =

ALL METRIC DIMENSIONS () ARE SOFT CONVERTED. IMPERIAL DIMENSIONS ARE CONVERTED TO METRIC AND ROUNDED TO THE NEAREST MILLIMETER.

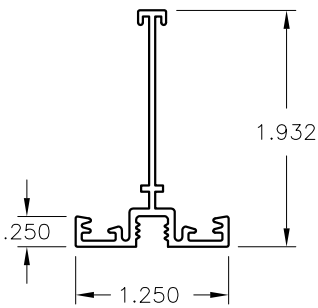
PROJECT:		PRICE®	
ENGINEER:			UNITEE CR 4806, 4730, 4732 CROSS TEE
CUSTOMER:		230584	
SUBMITTAL DATE:	SPEC. SYMBOL:	2010/11/29	



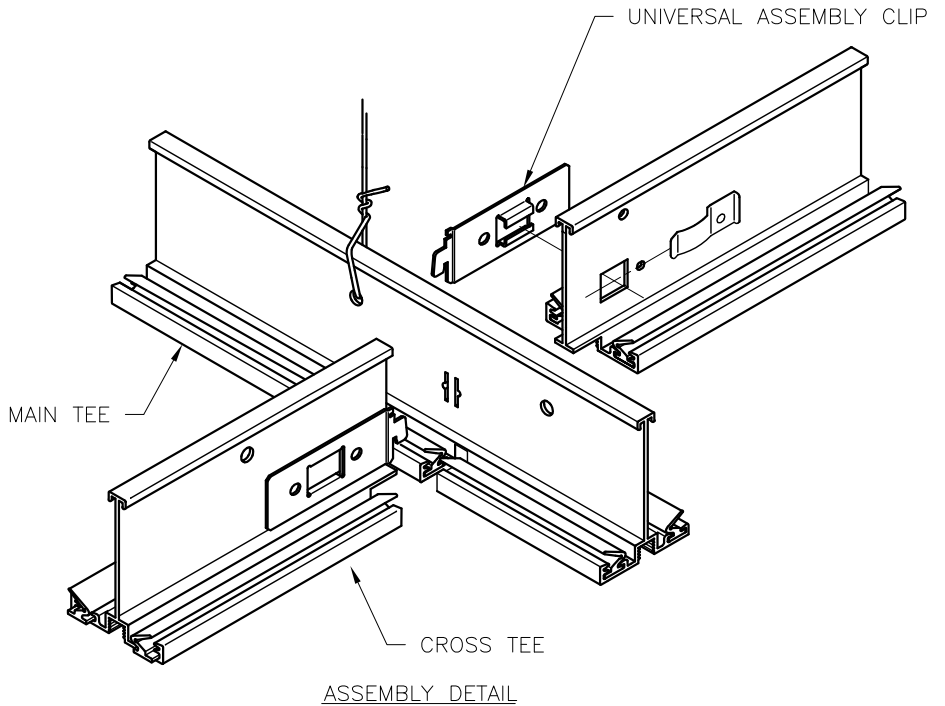
STANDARD END DETAIL



STANDARD REGIMENTATION & THRU-SLOT DETAIL



□ PROFILE 4726



ASSEMBLY DETAIL

MATERIAL:

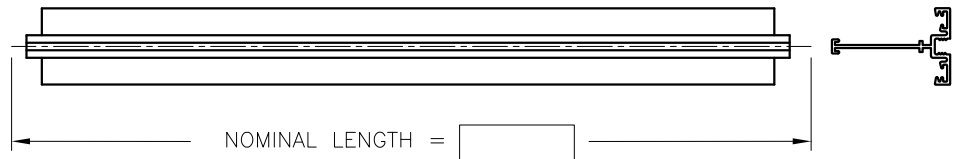
- EXTRUDED ALUMINUM

FINISH:

- B12 WHITE POWDER COAT

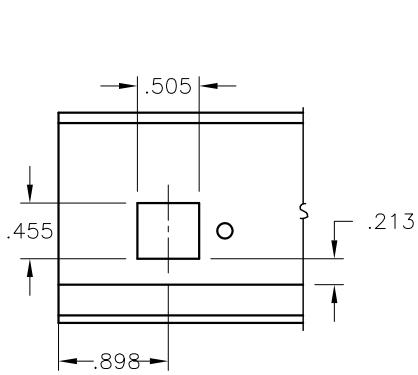
NOTES:

- REGIMENTATION AT O/C
- THROUGH SLOTS AT O/C
- c/w UNIVERSAL ASSEMBLY CLIPS

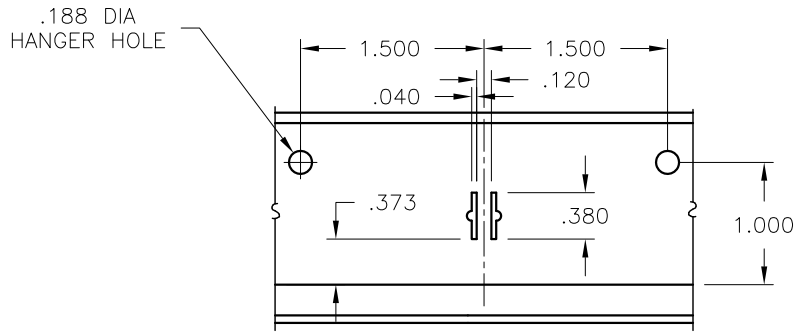


ALL METRIC DIMENSIONS () ARE SOFT CONVERTED. IMPERIAL DIMENSIONS ARE CONVERTED TO METRIC AND ROUNDED TO THE NEAREST MILLIMETER.

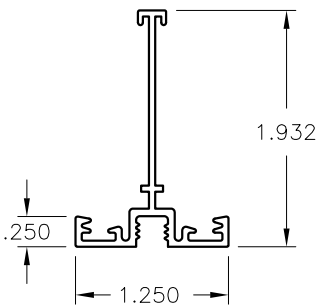
PROJECT:		PRICE [®]	
ENGINEER:		<i>RV</i>	UNITEE CR 4726 CROSS TEE
CUSTOMER:		230585	
SUBMITTAL DATE:	SPEC. SYMBOL:	2010/11/29	REV B



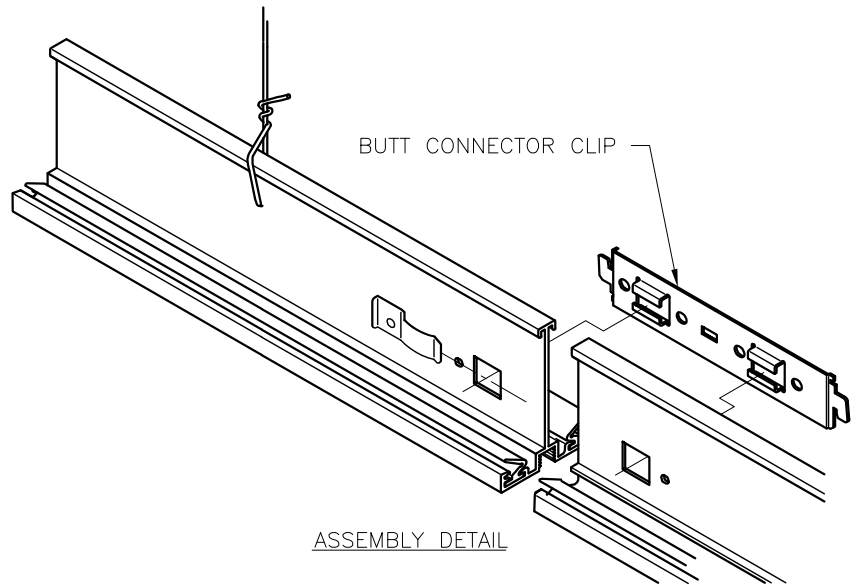
BUTT END DETAIL



STANDARD REGIMENTATION



□ PROFILE 4726



ASSEMBLY DETAIL

MATERIAL:

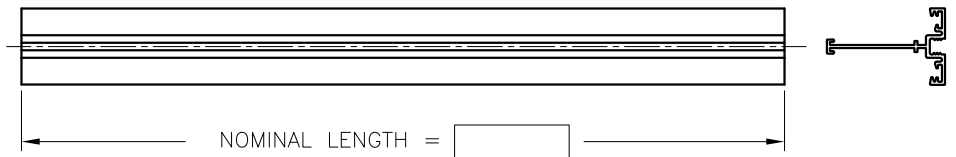
- EXTRUDED ALUMINUM

FINISH:

- B12 WHITE POWDER COAT

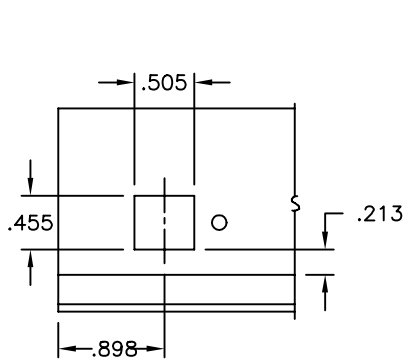
NOTES:

- REGIMENTATION AT O/C
- c/w BUTT CONNECTOR CLIPS

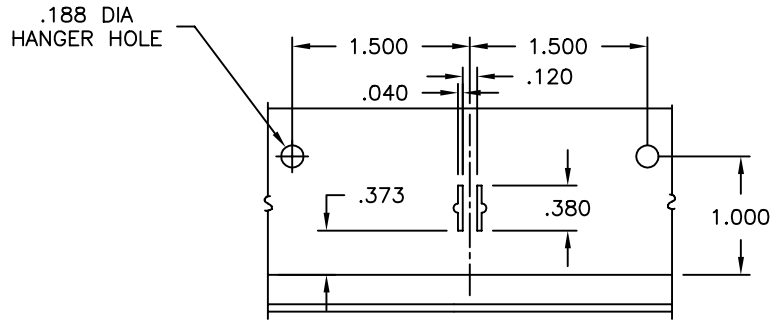


ALL METRIC DIMENSIONS () ARE SOFT CONVERTED. IMPERIAL DIMENSIONS ARE CONVERTED TO METRIC AND ROUNDED TO THE NEAREST MILLIMETER.

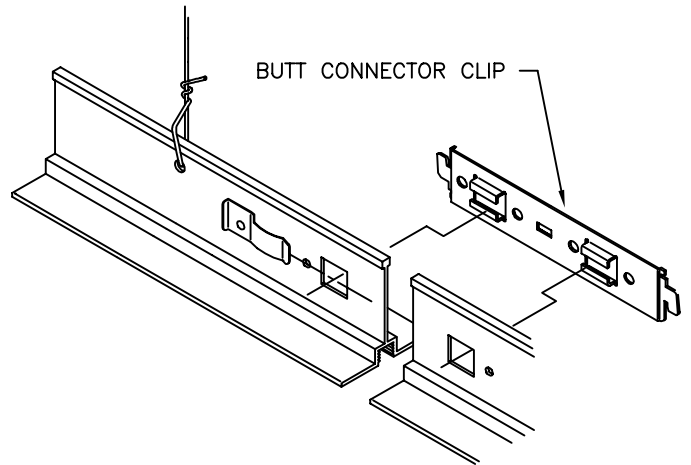
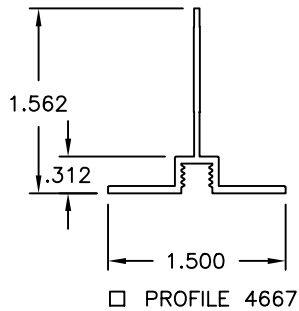
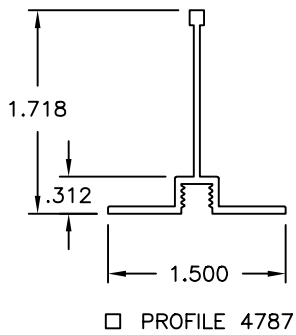
PROJECT:		PRICE [®]	
ENGINEER:		<i>RV</i>	UNITEE CR 4726 MAIN TEE
CUSTOMER:		230586	
SUBMITTAL DATE:	SPEC. SYMBOL:	2010/11/29	



BUTT END DETAIL



STANDARD REGIMENTATION DETAIL



ASSEMBLY DETAIL

MATERIAL:

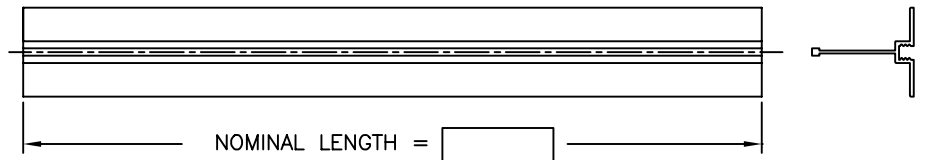
- EXTRUDED ALUMINUM

FINISH:

- B12 WHITE

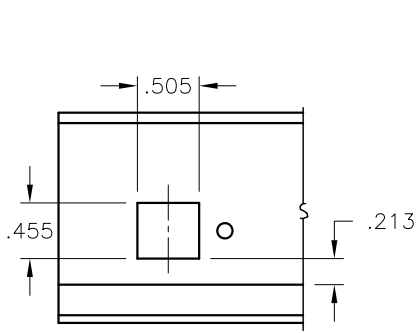
NOTES:

- REGIMENTATION AT O/C
- THROUGH SLOTS AT O/C
- c/w BUTT CONNECTOR CLIPS

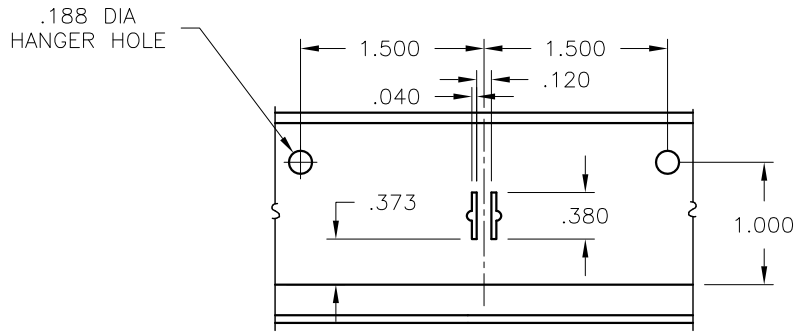


ALL METRIC DIMENSIONS () ARE SOFT CONVERTED. IMPERIAL DIMENSIONS ARE CONVERTED TO METRIC AND ROUNDED TO THE NEAREST MILLIMETER.

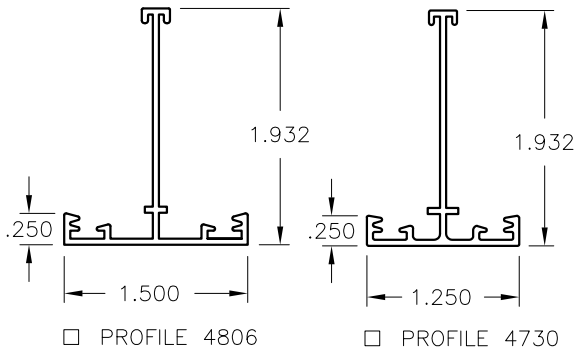
PROJECT:		PRICE[®]	
ENGINEER:			UNITEE 4667 / 4787 MAIN TEE
CUSTOMER:		230587	
SUBMITTAL DATE:	SPEC. SYMBOL:	DEC 1999	



STANDARD END DETAIL

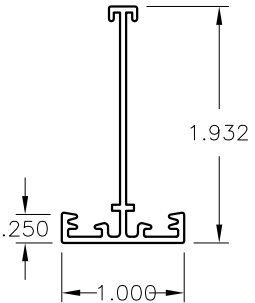


STANDARD REGIMENTATION

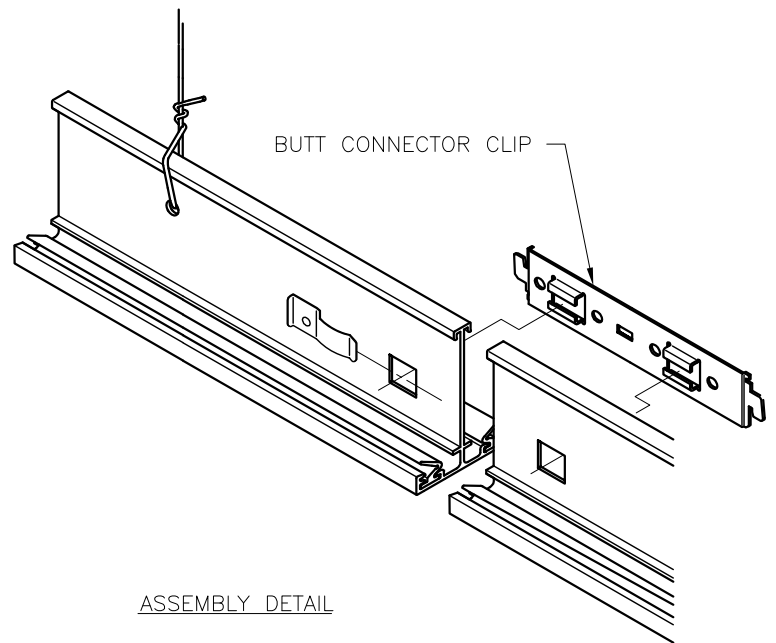


□ PROFILE 4806

□ PROFILE 4730



□ PROFILE 4732



ASSEMBLY DETAIL

MATERIAL:

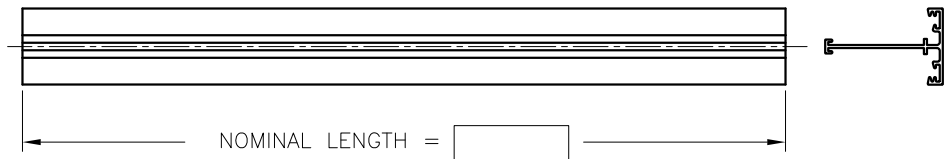
- EXTRUDED ALUMINUM

FINISH:

- B12 WHITE POWDER COAT

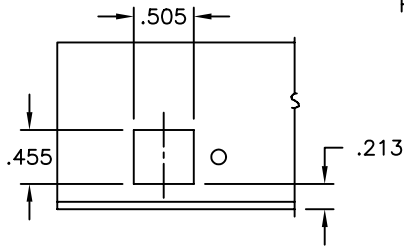
NOTES:

- REGIMENTATION AT O/C
- c/w BUTT CONNECTOR CLIPS

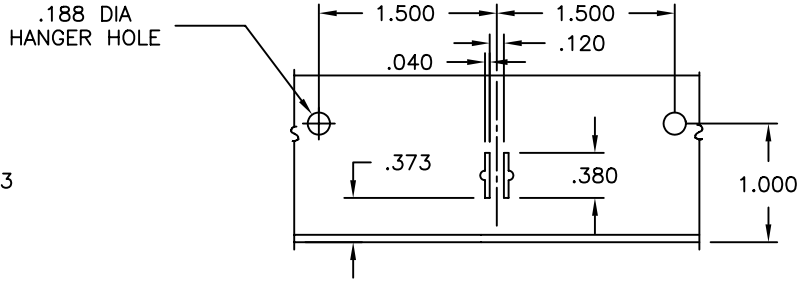


ALL METRIC DIMENSIONS () ARE SOFT CONVERTED. IMPERIAL DIMENSIONS ARE CONVERTED TO METRIC AND ROUNDED TO THE NEAREST MILLIMETER.

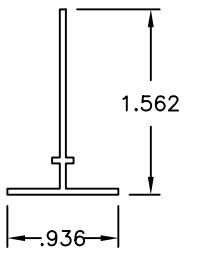
PROJECT:		PRICE®	
ENGINEER:		<i>RV</i>	UNITEE CR 4806, 4730, 4732 MAIN TEE
CUSTOMER:		230588	
SUBMITTAL DATE:	SPEC. SYMBOL:	2010/11/29	



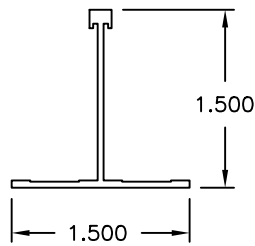
STANDARD END DETAIL



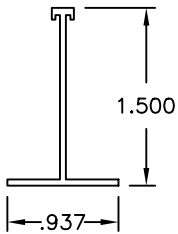
STANDARD REGIMENTATION



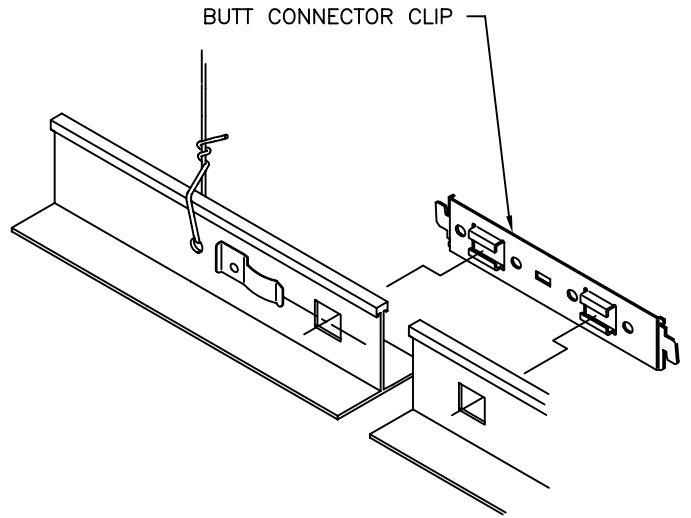
□ PROFILE 4683



□ PROFILE 4818



□ PROFILE 4823



ASSEMBLY DETAIL

MATERIAL:

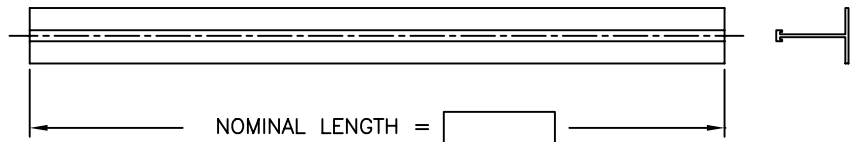
- EXTRUDED ALUMINUM

FINISH:

- B12 WHITE

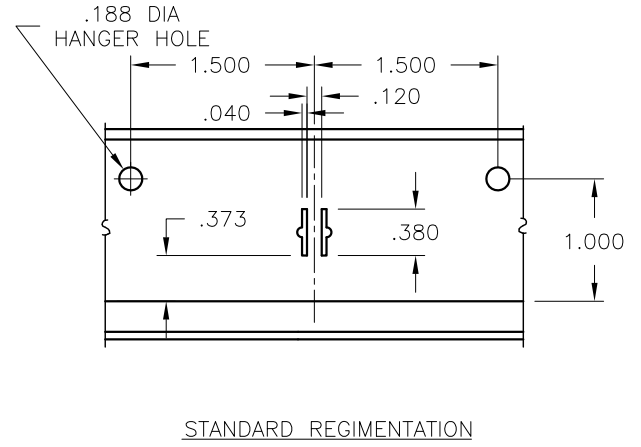
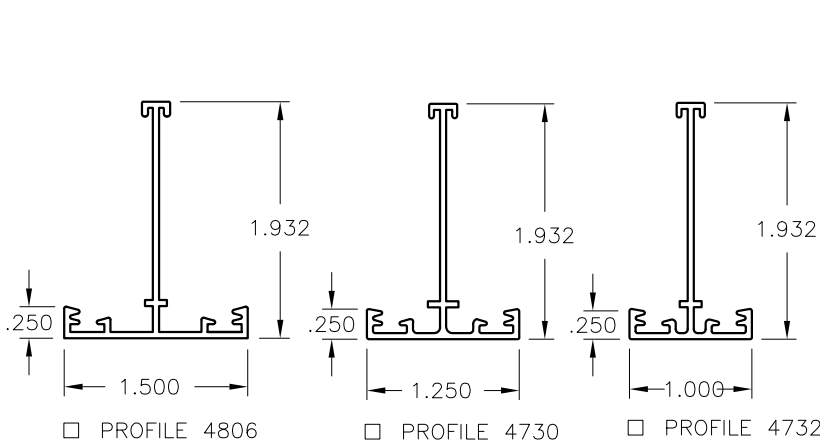
NOTES:

- REGIMENTATION AT O/C
- c/w BUTT CONNECTOR CLIPS

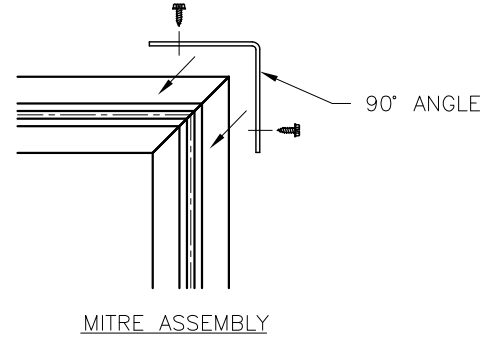
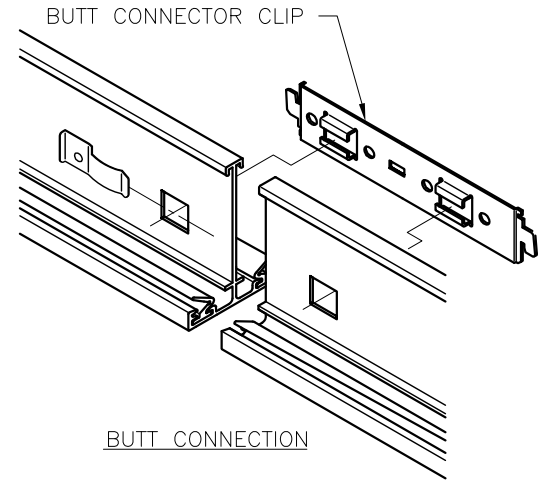


ALL METRIC DIMENSIONS () ARE SOFT CONVERTED. IMPERIAL DIMENSIONS ARE CONVERTED TO METRIC AND ROUNDED TO THE NEAREST MILLIMETER.

PROJECT:		PRICE[®]	
ENGINEER:		BG	UNITEE 4683, 4818, 4823 MAIN TEE
CUSTOMER:		230589	
SUBMITTAL DATE:	SPEC. SYMBOL:	JULY 2004	



LEFT END CONDITION	RIGHT END CONDITION
<p>□ BUTT END</p>	<p>BUTT END □</p>
<p>□ MITRE R</p>	<p>MITRE L □</p>
<p>□ MITRE L</p>	<p>MITRE R □</p>



MATERIAL:

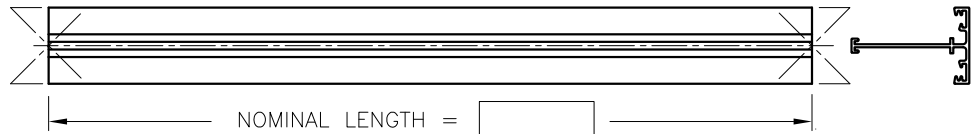
- EXTRUDED ALUMINUM

FINISH:

- B12 WHITE POWDER COAT

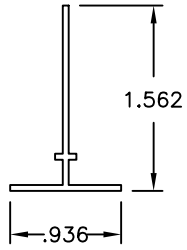
NOTES:

- c/w BUTT CONNECTOR CLIPS IF REQUIRED
- MITRES ARE 45° UNLESS OTHERWISE SPECIFIED
- c/w 90° ANGLE UNLESS OTHERWISE SPECIFIED
- REGIMENTATION AT O/C

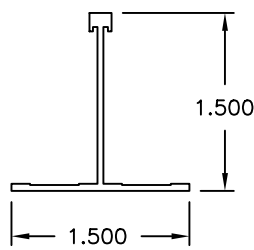


ALL METRIC DIMENSIONS () ARE SOFT CONVERTED. IMPERIAL DIMENSIONS ARE CONVERTED TO METRIC AND ROUNDED TO THE NEAREST MILLIMETER.

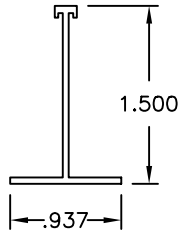
PROJECT:		PRICE®	
ENGINEER:		<i>RV</i>	UNITEE CR 4806, 4730, 4732 PERIMETER TEE
CUSTOMER:		230590	
SUBMITTAL DATE:	SPEC. SYMBOL:	2010/11/29	



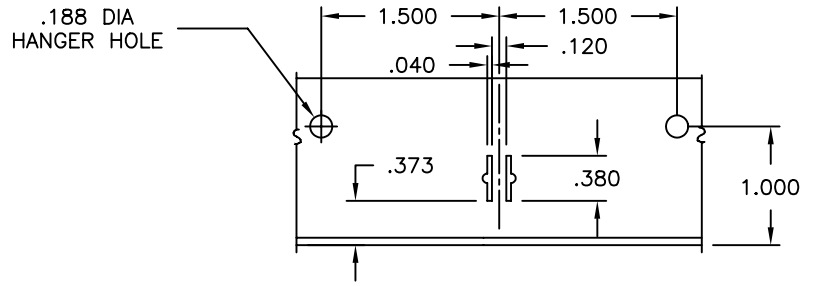
PROFILE 4683



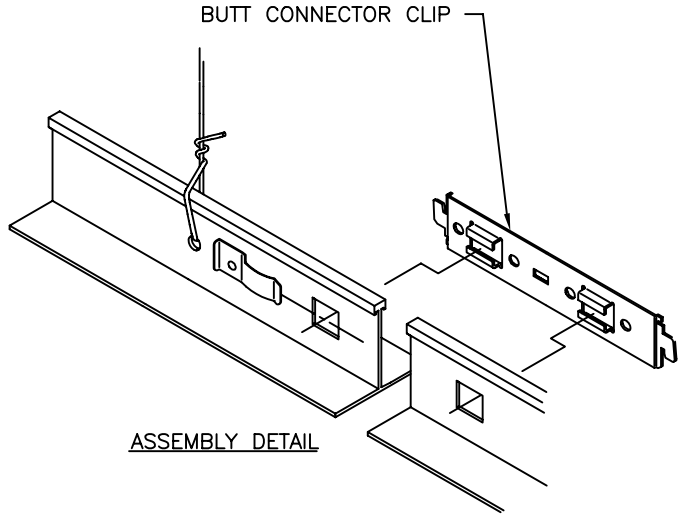
PROFILE 4818



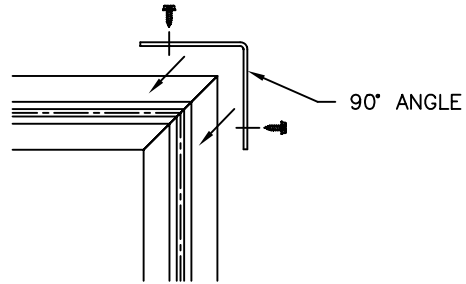
PROFILE 4823



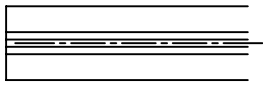
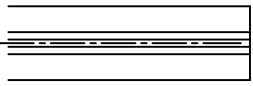
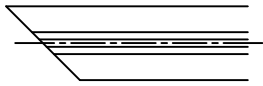
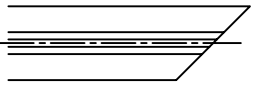


STANDARD REGIMENTATION



ASSEMBLY DETAIL



MITRE ASSEMBLY

LEFT END CONDITION	RIGHT END CONDITION
 <input type="checkbox"/> BUTT END	 BUTT END <input type="checkbox"/>
 <input type="checkbox"/> MITRE R	 MITRE L <input type="checkbox"/>
 <input type="checkbox"/> MITRE L	 MITRE R <input type="checkbox"/>

MATERIAL:

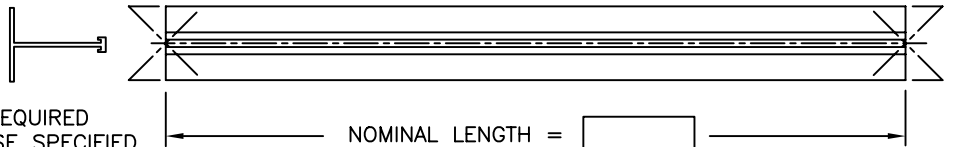
- EXTRUDED ALUMINUM

FINISH:

- B12 WHITE

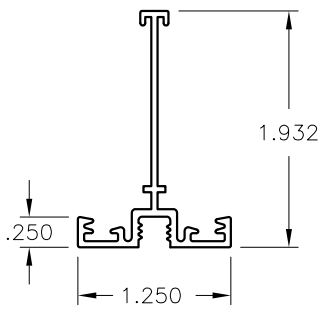
NOTES:

- c/w BUTT CONNECTOR CLIPS IF REQUIRED
- MITRES ARE 45° UNLESS OTHERWISE SPECIFIED
- c/w 90° ANGLE UNLESS OTHERWISE SPECIFIED
- REGIMENTATION AT O/C



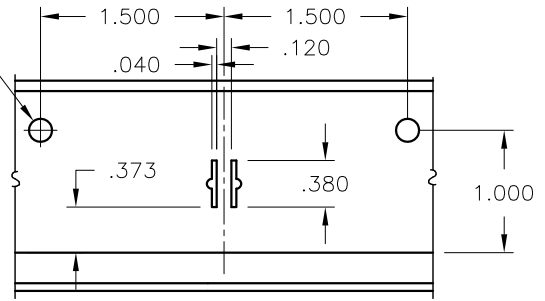
ALL METRIC DIMENSIONS () ARE SOFT CONVERTED. IMPERIAL DIMENSIONS ARE CONVERTED TO METRIC AND ROUNDED TO THE NEAREST MILLIMETER.

PROJECT:		PRICE[®]	
ENGINEER:		BG	UNITEE 4683, 4818, 4823 PERIMETER TEE
CUSTOMER:		230591	
SUBMITTAL DATE:	SPEC. SYMBOL:	JULY 2004	



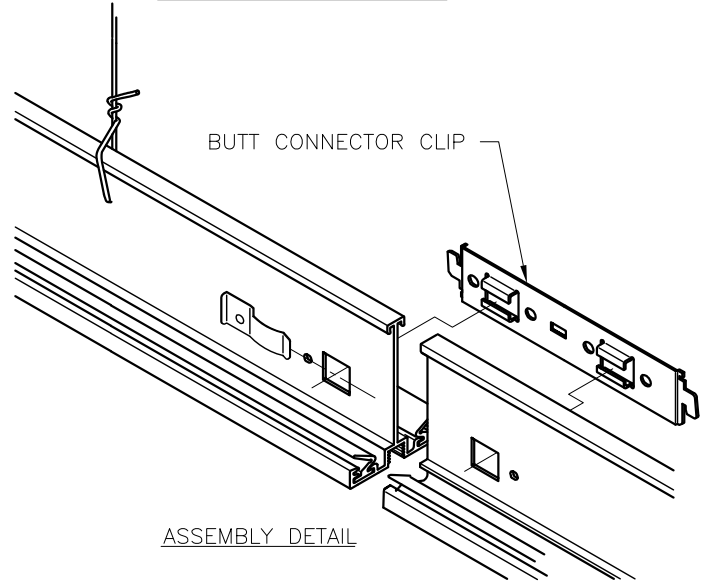
□ PROFILE 4726

.188 DIA
HANGER HOLE

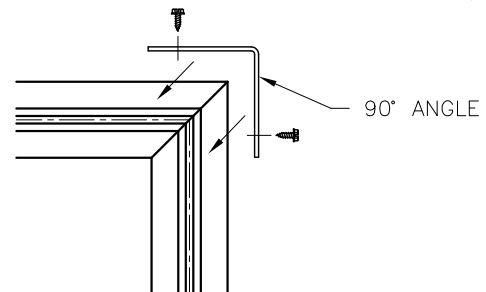


STANDARD REGIMENTATION

LEFT END CONDITION	RIGHT END CONDITION
 <input type="checkbox"/> BUTT END	 BUTT END <input type="checkbox"/>
 <input type="checkbox"/> MITRE R	 MITRE L <input type="checkbox"/>
 <input type="checkbox"/> MITRE L	 MITRE R <input type="checkbox"/>



ASSEMBLY DETAIL



MITRE ASSEMBLY

MATERIAL:

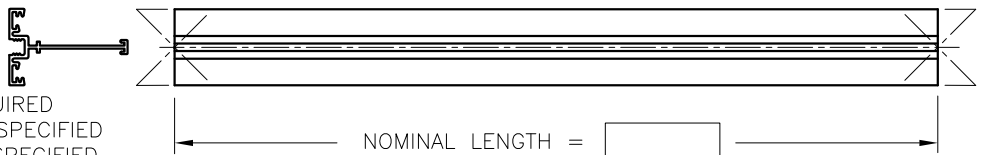
- EXTRUDED ALUMINUM

FINISH:

- B12 WHITE POWDER COAT

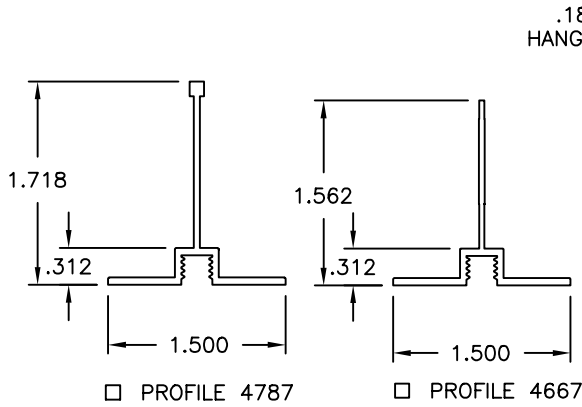
NOTES:

- c/w BUTT CONNECTOR CLIPS IF REQUIRED
- MITRES ARE 45° UNLESS OTHERWISE SPECIFIED
- c/w 90° ANGLE UNLESS OTHERWISE SPECIFIED
- REGIMENTATION AT O/C

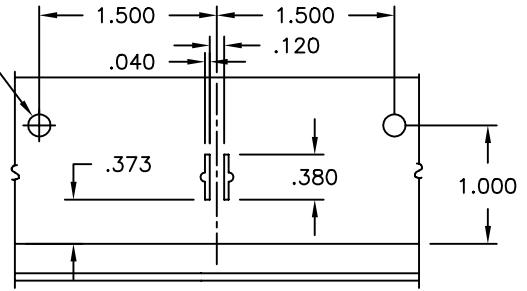


ALL METRIC DIMENSIONS () ARE SOFT CONVERTED. IMPERIAL DIMENSIONS ARE CONVERTED TO METRIC AND ROUNDED TO THE NEAREST MILLIMETER.

PROJECT:		PRICE®	
ENGINEER:		 230592	UNITEE CR 4726 PERIMETER TEE
CUSTOMER:			
SUBMITTAL DATE:	SPEC. SYMBOL:	2010/11/29	

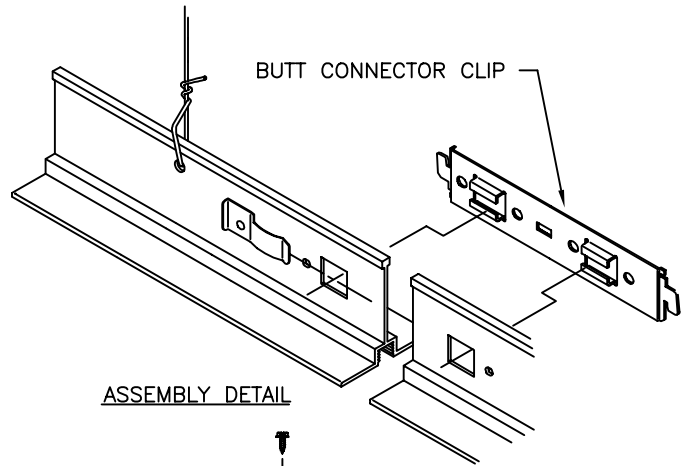


.188 DIA
HANGER HOLE

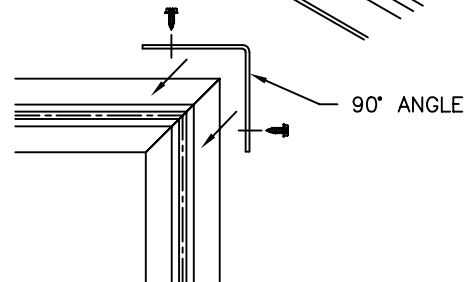


STANDARD REGIMENTATION DETAIL

LEFT END CONDITION	RIGHT END CONDITION
<p>□ BUTT END</p>	<p>BUTT END □</p>
<p>□ MITRE R</p>	<p>MITRE L □</p>
<p>□ MITRE L</p>	<p>MITRE R □</p>



ASSEMBLY DETAIL



MITRE ASSEMBLY

MATERIAL:

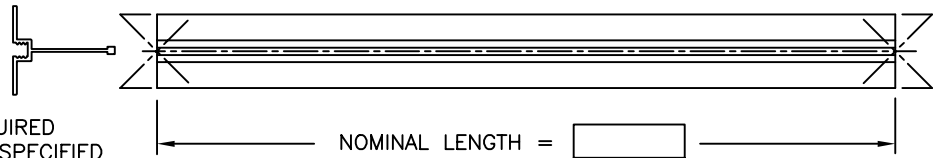
- EXTRUDED ALUMINUM

FINISH:

- B12 WHITE

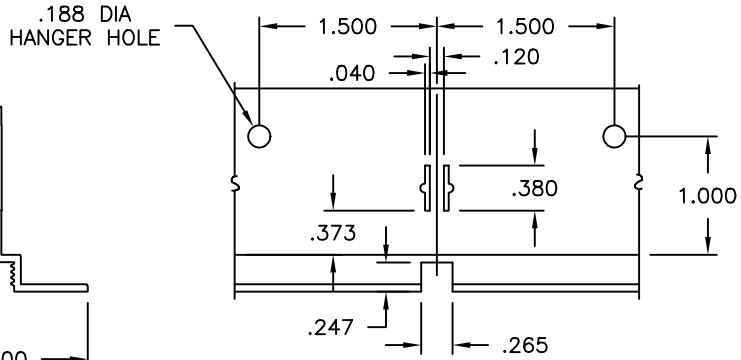
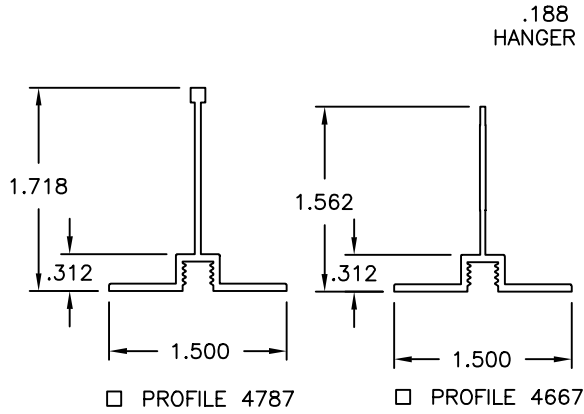
NOTES:

- c/w BUTT CONNECTOR CLIPS IF REQUIRED
- MITRES ARE 45° UNLESS OTHERWISE SPECIFIED
- c/w 90° ANGLE UNLESS OTHERWISE SPECIFIED
- REGIMENTATION AT O/C



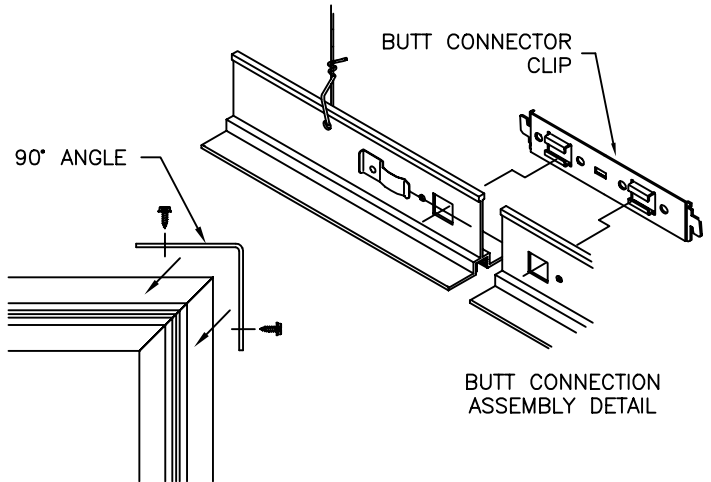
ALL METRIC DIMENSIONS () ARE SOFT CONVERTED. IMPERIAL DIMENSIONS ARE CONVERTED TO METRIC AND ROUNDED TO THE NEAREST MILLIMETER.

PROJECT:		PRICE®	
ENGINEER:			UNITEE 4667 / 4787 PERIMETER TEE
CUSTOMER:			
SUBMITTAL DATE:	SPEC. SYMBOL:	DEC 1999	

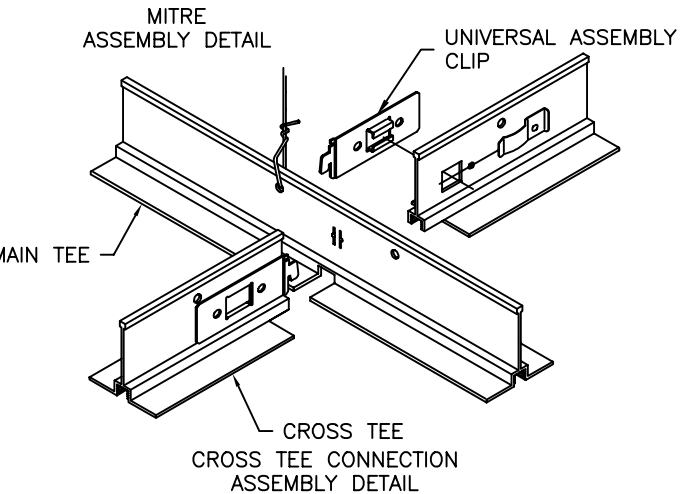


STANDARD REGIMENTATION & THRU-SLOT DETAIL

LEFT END CONDITION	RIGHT END CONDITION
□ BUTT END	BUTT END □
□ MITRE R	MITRE L □
□ MITRE L	MITRE R □
□ STANDARD L	STANDARD R □
□ SPECIAL L	SPECIAL R □



BUTT CONNECTION ASSEMBLY DETAIL



CROSS TEE CONNECTION ASSEMBLY DETAIL

MATERIAL:

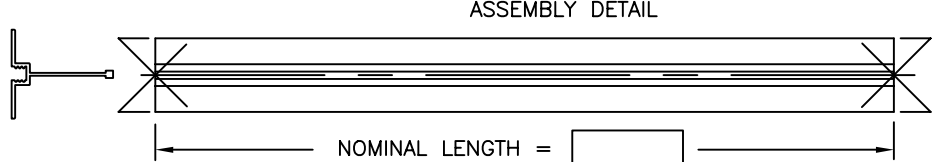
- EXTRUDED ALUMINUM

FINISH:

- B12 WHITE

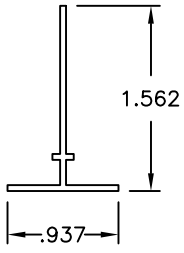
NOTES:

- REGIMENTATION AT O/C
- THROUGH SLOTS AT O/C
- c/w UNIVERSAL ASSEMBLY CLIPS
- c/w 90° ANGLE
- c/w BUTT CONNECTOR CLIP

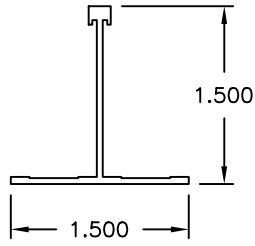


ALL METRIC DIMENSIONS () ARE SOFT CONVERTED. IMPERIAL DIMENSIONS ARE CONVERTED TO METRIC AND ROUNDED TO THE NEAREST MILLIMETER.

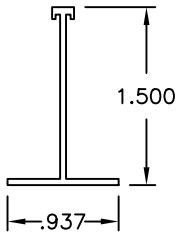
PROJECT:		PRICE®	
ENGINEER:			UNITEE 4667 / 4787 CUSTOM TEE
CUSTOMER:			
SUBMITTAL DATE:	SPEC. SYMBOL:	DEC 1999	



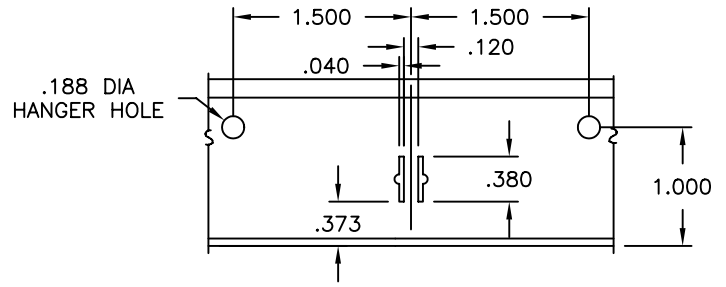
PROFILE 4683



PROFILE 4818

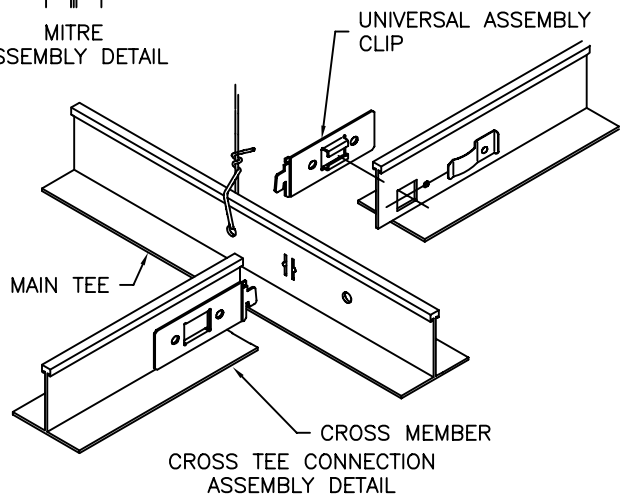
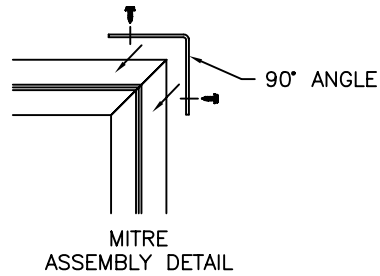
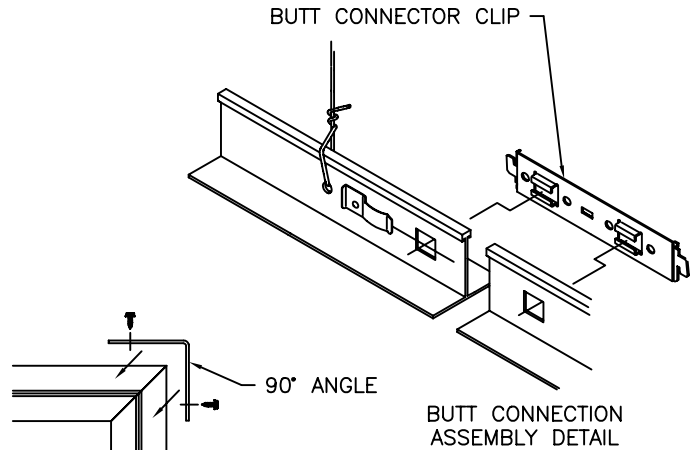


PROFILE 4823



STANDARD REGIMENTATION

LEFT END CONDITION	RIGHT END CONDITION
<input type="checkbox"/> BUTT END	BUTT END <input type="checkbox"/>
<input type="checkbox"/> MITRE R	MITRE L <input type="checkbox"/>
<input type="checkbox"/> MITRE L	MITRE R <input type="checkbox"/>
<input type="checkbox"/> STANDARD L	STANDARD R <input type="checkbox"/>
<input type="checkbox"/> SPECIAL L	SPECIAL R <input type="checkbox"/>



MATERIAL:

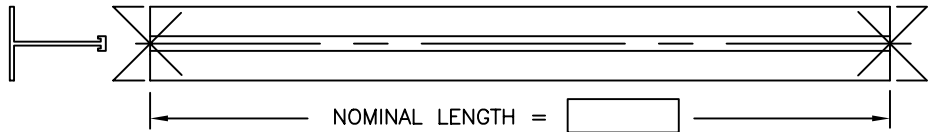
- EXTRUDED ALUMINUM

FINISH:

- B12 WHITE

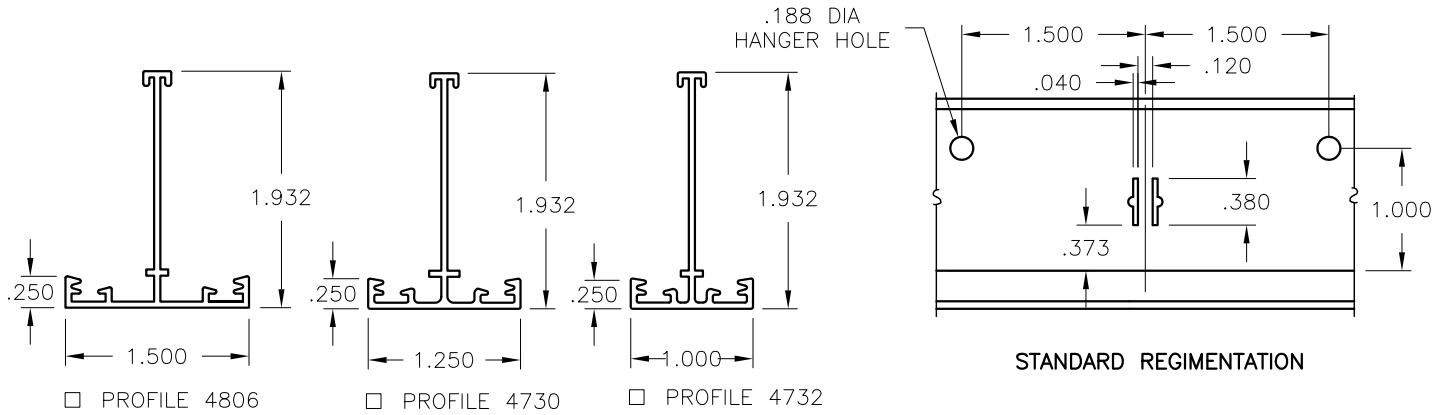
NOTES:

- REGIMENTATION AT O/C
- c/w UNIVERSAL ASSEMBLY CLIPS
- c/w 90° ANGLE
- c/w BUTT CONNECTOR CLIP

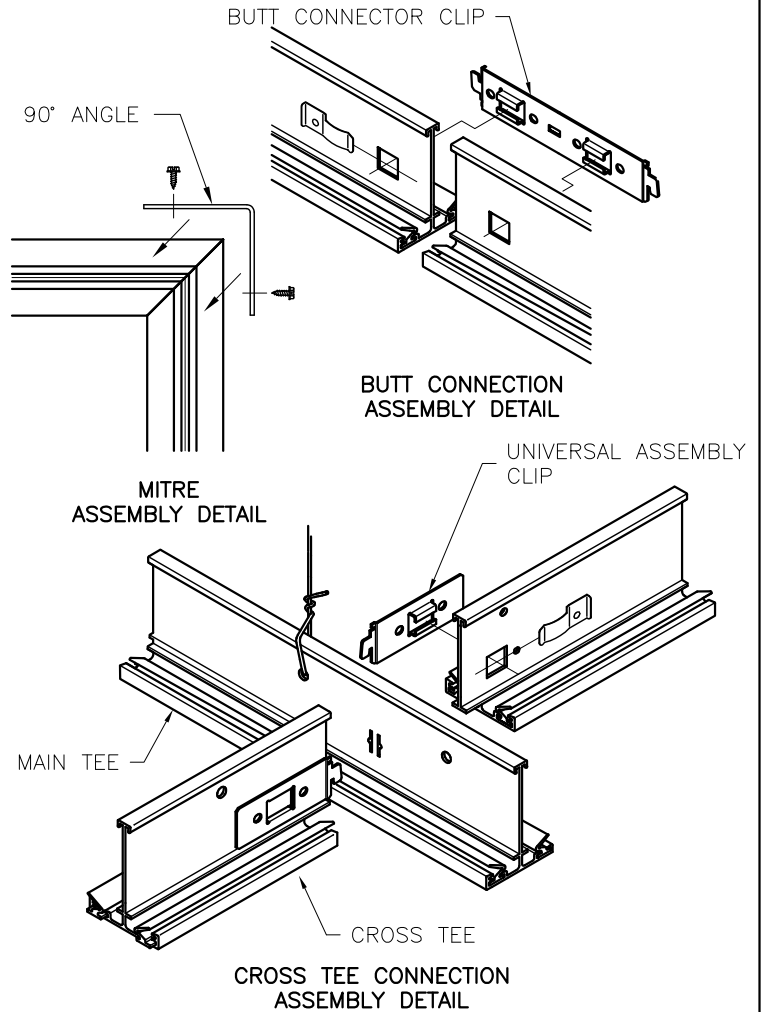


ALL METRIC DIMENSIONS () ARE SOFT CONVERTED. IMPERIAL DIMENSIONS ARE CONVERTED TO METRIC AND ROUNDED TO THE NEAREST MILLIMETER.

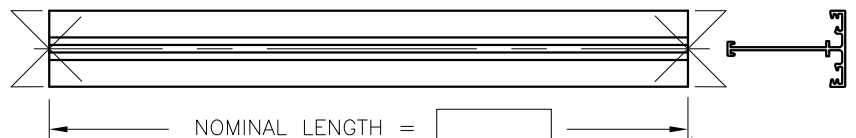
PROJECT:		PRICE®	
ENGINEER:		BG	UNITEE 4683, 4823, 4818 CUSTOM TEE
CUSTOMER:		230596	
SUBMITTAL DATE:	SPEC. SYMBOL:	JULY 2004	



LEFT END CONDITION	RIGHT END CONDITION
<input type="checkbox"/> BUTT END	BUTT END <input type="checkbox"/>
<input type="checkbox"/> MITRE R	MITRE L <input type="checkbox"/>
<input type="checkbox"/> MITRE L	MITRE R <input type="checkbox"/>
<input type="checkbox"/> STANDARD L	STANDARD R <input type="checkbox"/>
<input type="checkbox"/> SPECIAL L	SPECIAL R <input type="checkbox"/>

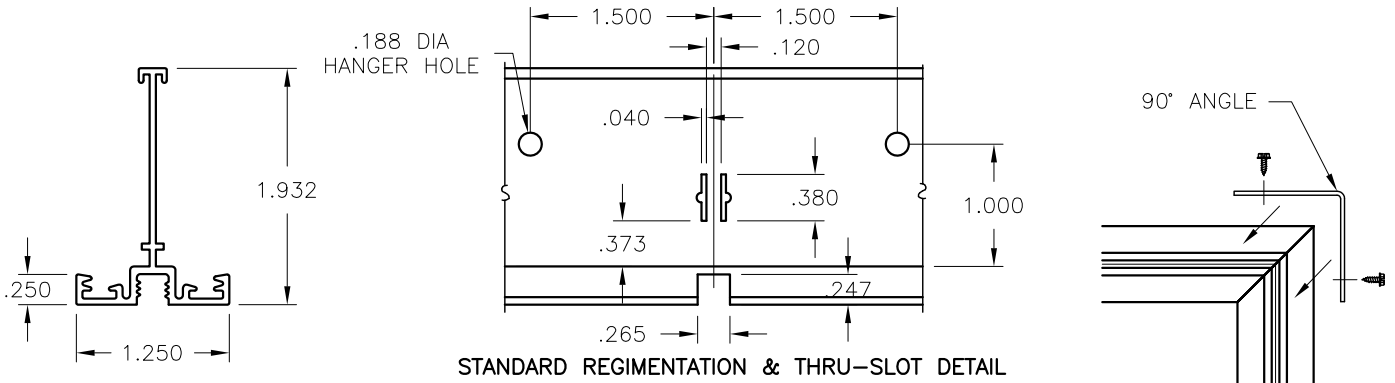


- MATERIAL:**
- EXTRUDED ALUMINUM
- FINISH:**
- B12 WHITE POWDER COAT
- NOTES:**
- REGIMENTATION AT O/C
 - c/w UNIVERSAL ASSEMBLY CLIPS
 - c/w 90° ANGLE
 - c/w BUTT CONNECTOR CLIP



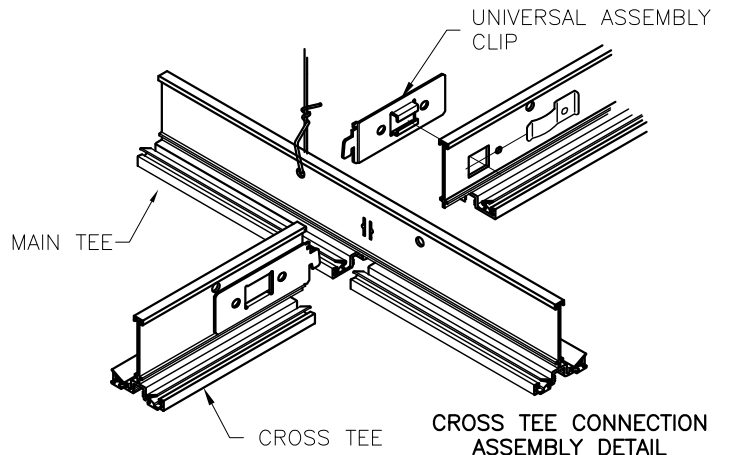
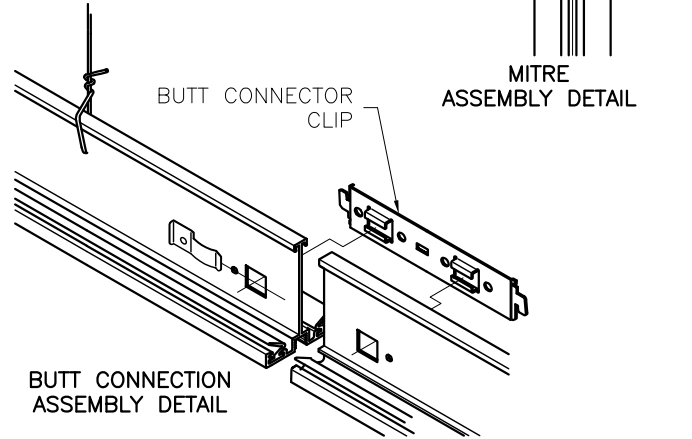
ALL METRIC DIMENSIONS () ARE SOFT CONVERTED. IMPERIAL DIMENSIONS ARE CONVERTED TO METRIC AND ROUNDED TO THE NEAREST MILLIMETER.

PROJECT:		PRICE®	
ENGINEER:			
CUSTOMER:		230597	
SUBMITTAL DATE:	SPEC. SYMBOL:	2010/11/29	



□ PROFILE 4726

LEFT END CONDITION	RIGHT END CONDITION
□ BUTT END	BUTT END □
□ MITRE R	MITRE L □
□ MITRE L	MITRE R □
□ STANDARD L	STANDARD R □
□ SPECIAL L	SPECIAL R □



MATERIAL:

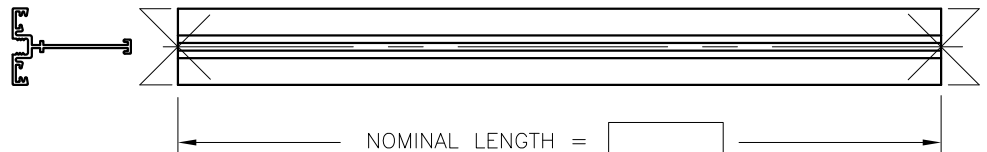
- EXTRUDED ALUMINUM

FINISH:

- B12 WHITE POWDER COAT

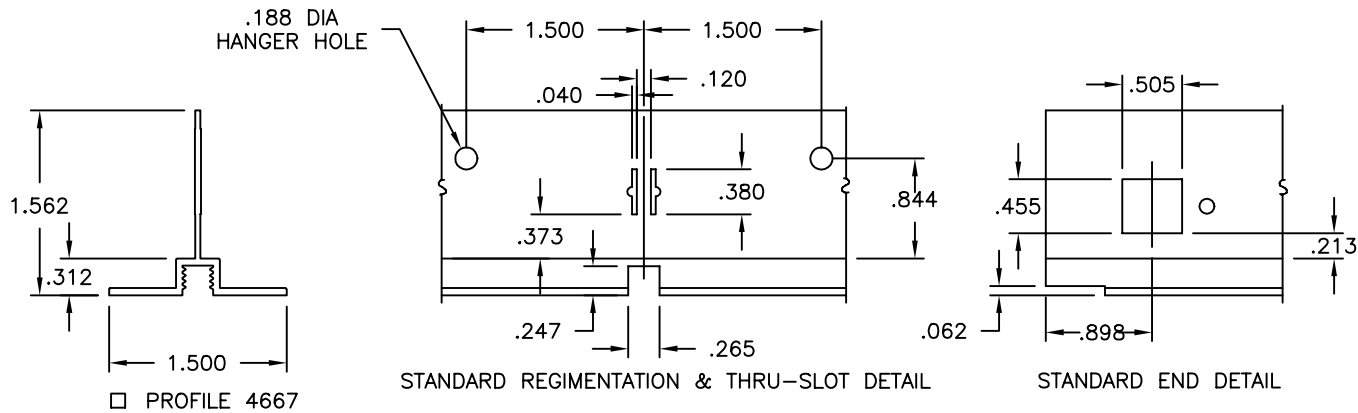
NOTES:

- REGIMENTATION AT O/C
- THROUGH SLOTS AT O/C
- c/w UNIVERSAL ASSEMBLY CLIPS
- c/w 90° ANGLE
- c/w BUTT CONNECTOR CLIP



ALL METRIC DIMENSIONS () ARE SOFT CONVERTED. IMPERIAL DIMENSIONS ARE CONVERTED TO METRIC AND ROUNDED TO THE NEAREST MILLIMETER.

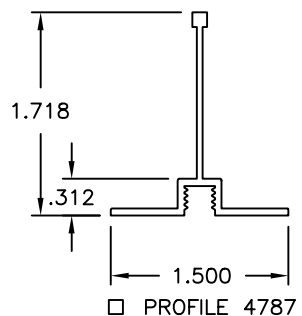
PROJECT:		PRICE [®]	
ENGINEER:			UNITEE CR 4726 CUSTOM TEE
CUSTOMER:		230598	
SUBMITTAL DATE:	SPEC. SYMBOL:	2010/11/29	



□ PROFILE 4667

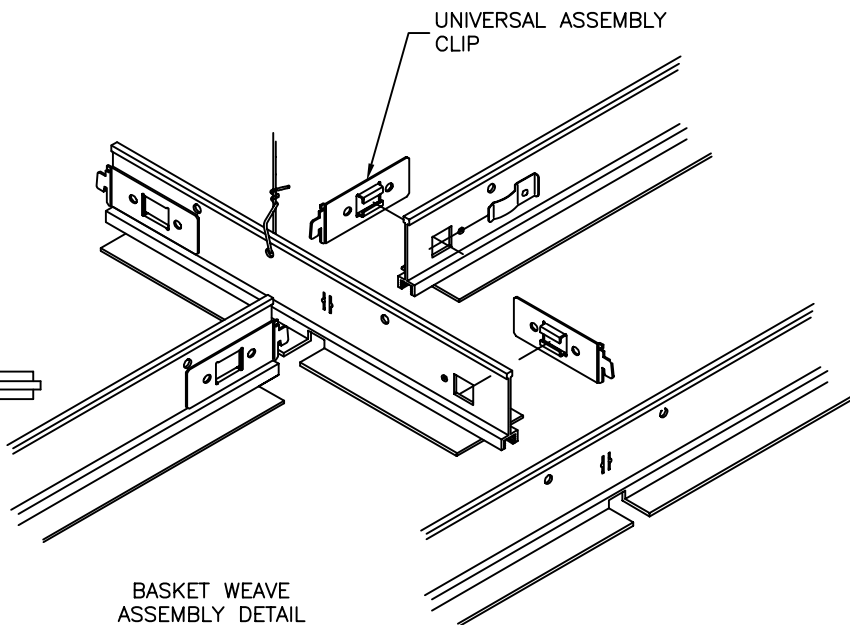
STANDARD REGIMENTATION & THRU-SLOT DETAIL

STANDARD END DETAIL



□ PROFILE 4787

BASKET WEAVE PATTERN



BASKET WEAVE ASSEMBLY DETAIL

MATERIAL:

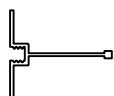
- EXTRUDED ALUMINUM

FINISH:


- B12 WHITE

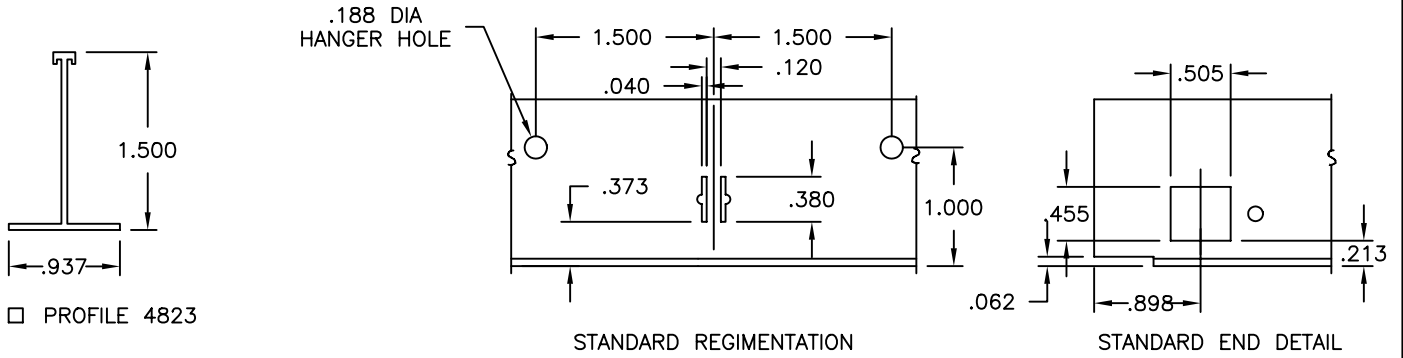
NOTES:

- REGIMENTATION AT O/C
- THROUGH SLOTS AT O/C
- c/w UNIVERSAL ASSEMBLY CLIPS



ALL METRIC DIMENSIONS () ARE SOFT CONVERTED. IMPERIAL DIMENSIONS ARE CONVERTED TO METRIC AND ROUNDED TO THE NEAREST MILLIMETER.

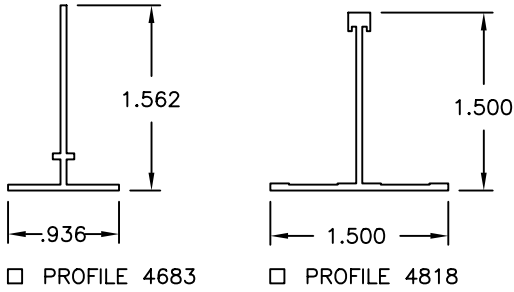
PROJECT:		PRICE[®]	
ENGINEER:			UNITEE 4667 / 4787 BASKET WEAVE
CUSTOMER:			
SUBMITTAL DATE:	SPEC. SYMBOL:	DEC. 1999	



□ PROFILE 4823

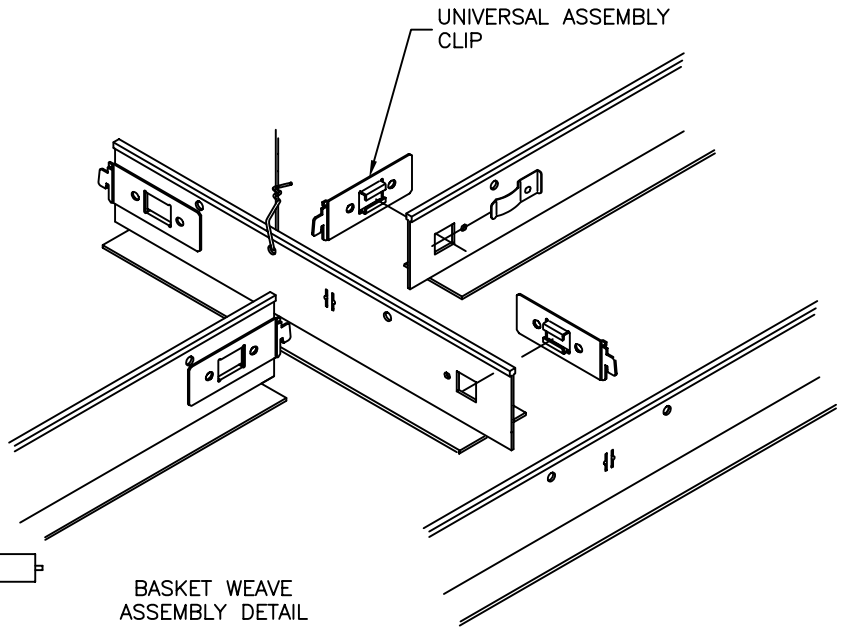
STANDARD REGIMENTATION

STANDARD END DETAIL

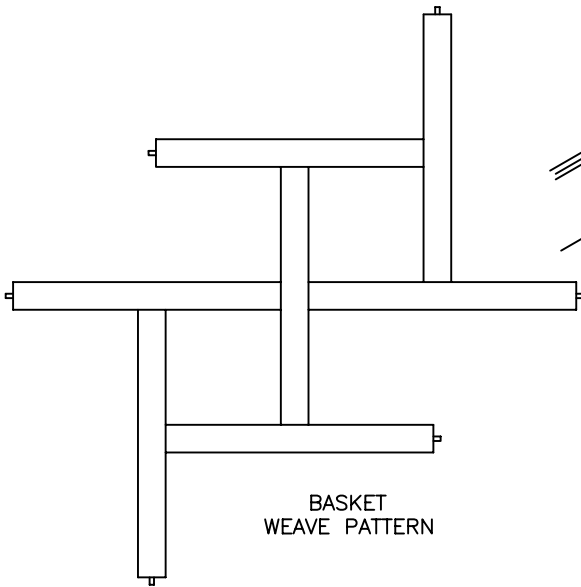


□ PROFILE 4683

□ PROFILE 4818



BASKET WEAVE ASSEMBLY DETAIL



BASKET WEAVE PATTERN

MATERIAL:

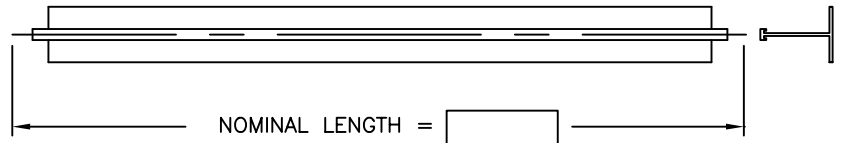
- EXTRUDED ALUMINUM

FINISH:

- B12 WHITE

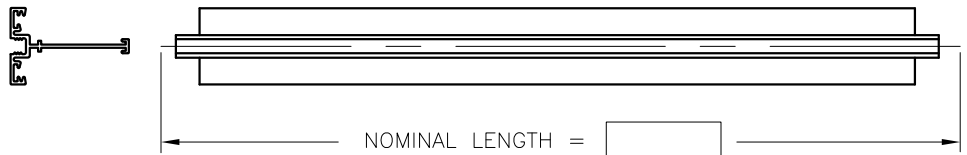
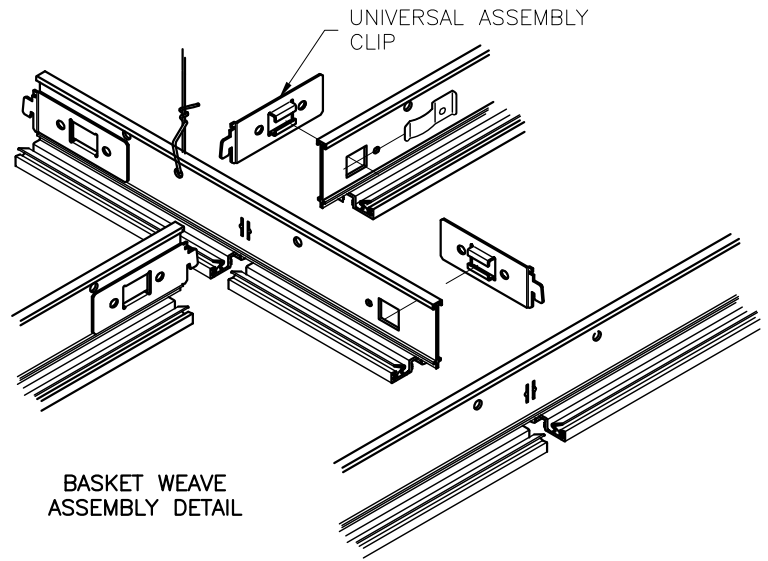
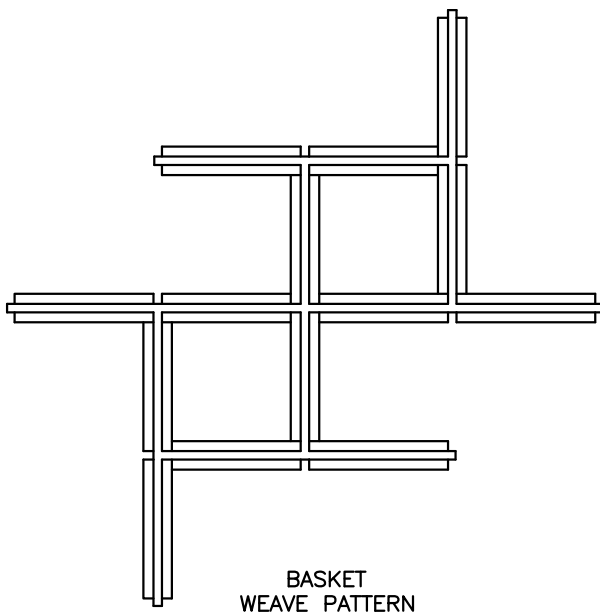
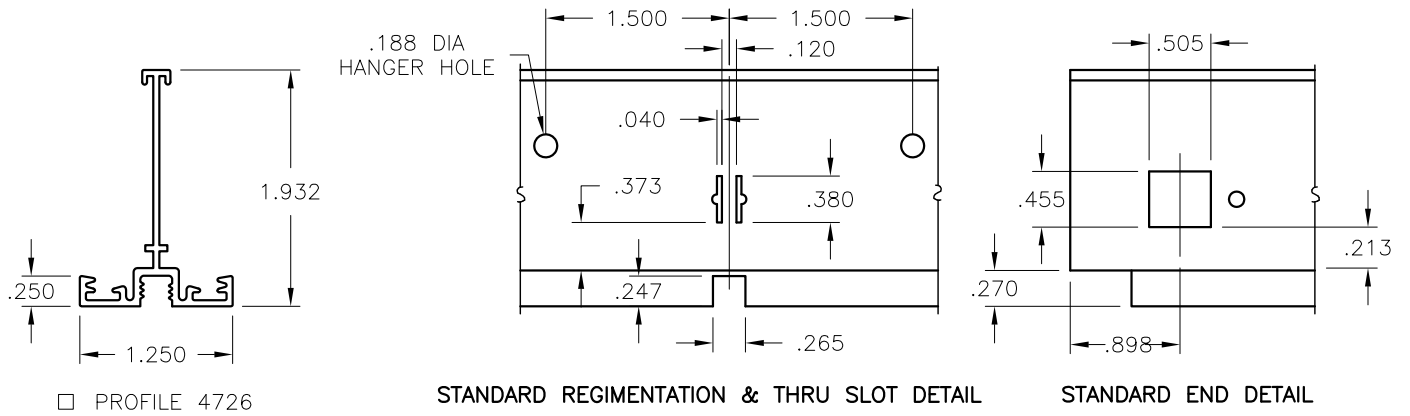
NOTES:

- REGIMENTATION AT O/C
- c/w UNIVERSAL ASSEMBLY CLIPS



ALL METRIC DIMENSIONS () ARE SOFT CONVERTED. IMPERIAL DIMENSIONS ARE CONVERTED TO METRIC AND ROUNDED TO THE NEAREST MILLIMETER.

PROJECT:		PRICE®	
ENGINEER:		BG	UNITEE 4683/4823/4818 BASKET WEAVE
CUSTOMER:			
SUBMITTAL DATE:		230600	
SPEC. SYMBOL:		JULY 2004	



MATERIAL:

- EXTRUDED ALUMINUM

FINISH:

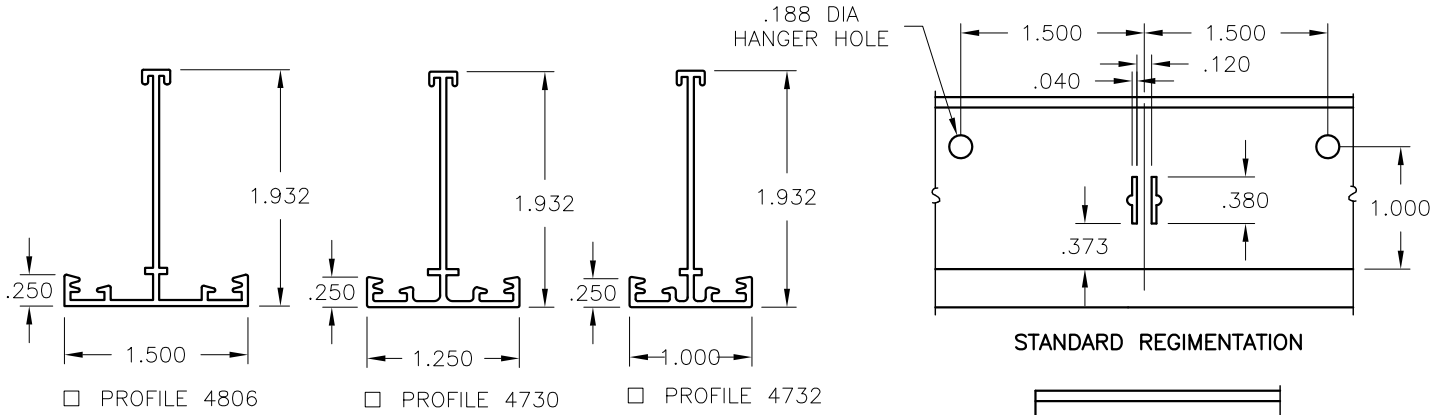
- B12 WHITE POWDER COAT

NOTES:

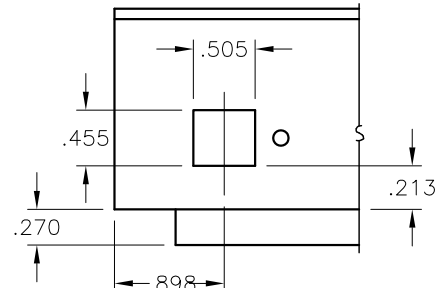
- REGIMENTATION AT O/C
- THROUGH SLOTS AT O/C
- c/w UNIVERSAL ASSEMBLY CLIPS

ALL METRIC DIMENSIONS () ARE SOFT CONVERTED. IMPERIAL DIMENSIONS ARE CONVERTED TO METRIC AND ROUNDED TO THE NEAREST MILLIMETER.

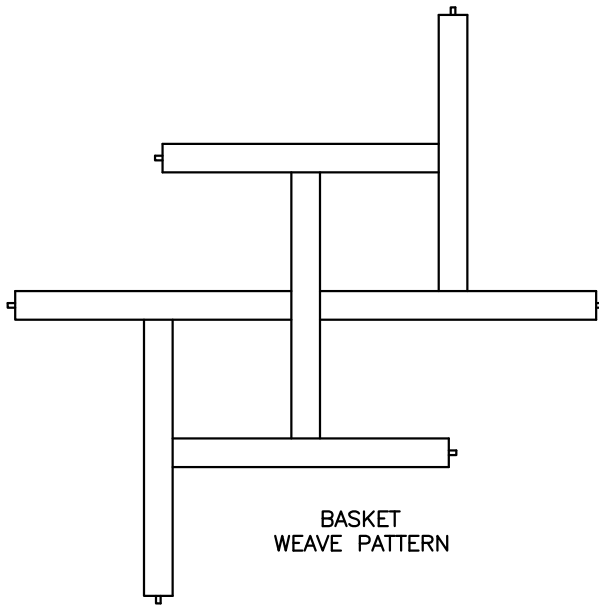
PROJECT:		PRICE®	
ENGINEER:		<i>RV</i>	UNITEE CR 4726 BASKET WEAVE
CUSTOMER:		230601	
SUBMITTAL DATE:	SPEC. SYMBOL:	2010/11/29	



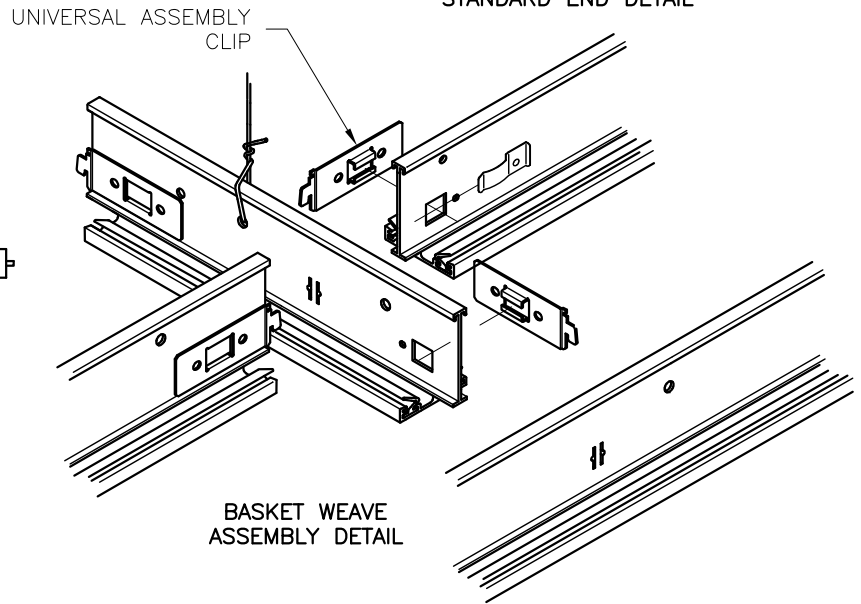
STANDARD REGIMENTATION



STANDARD END DETAIL



BASKET WEAVE PATTERN



BASKET WEAVE ASSEMBLY DETAIL

MATERIAL:

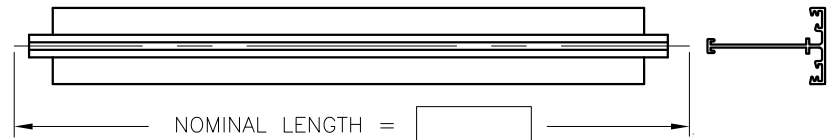
- EXTRUDED ALUMINUM

FINISH:

- B12 WHITE POWDER COAT

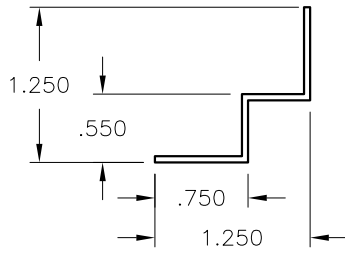
NOTES:

- REGIMENTATION AT O/C
- c/w UNIVERSAL ASSEMBLY CLIPS

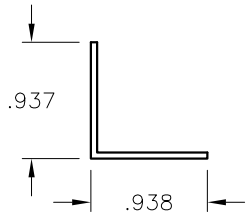


ALL METRIC DIMENSIONS () ARE SOFT CONVERTED. IMPERIAL DIMENSIONS ARE CONVERTED TO METRIC AND ROUNDED TO THE NEAREST MILLIMETER.

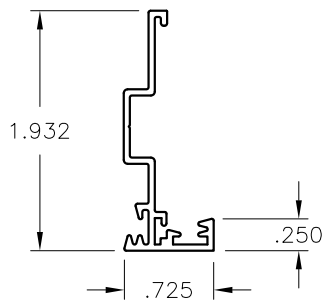
PROJECT:		PRICE [®]	
ENGINEER:		<i>RV</i>	UNITEE CR 4730/4732/4806 BASKET WEAVE
CUSTOMER:		230602	
SUBMITTAL DATE:	SPEC. SYMBOL:	2010/11/29	



□ PROFILE 4805
UNITEE

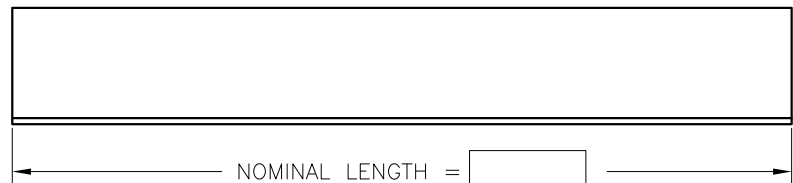
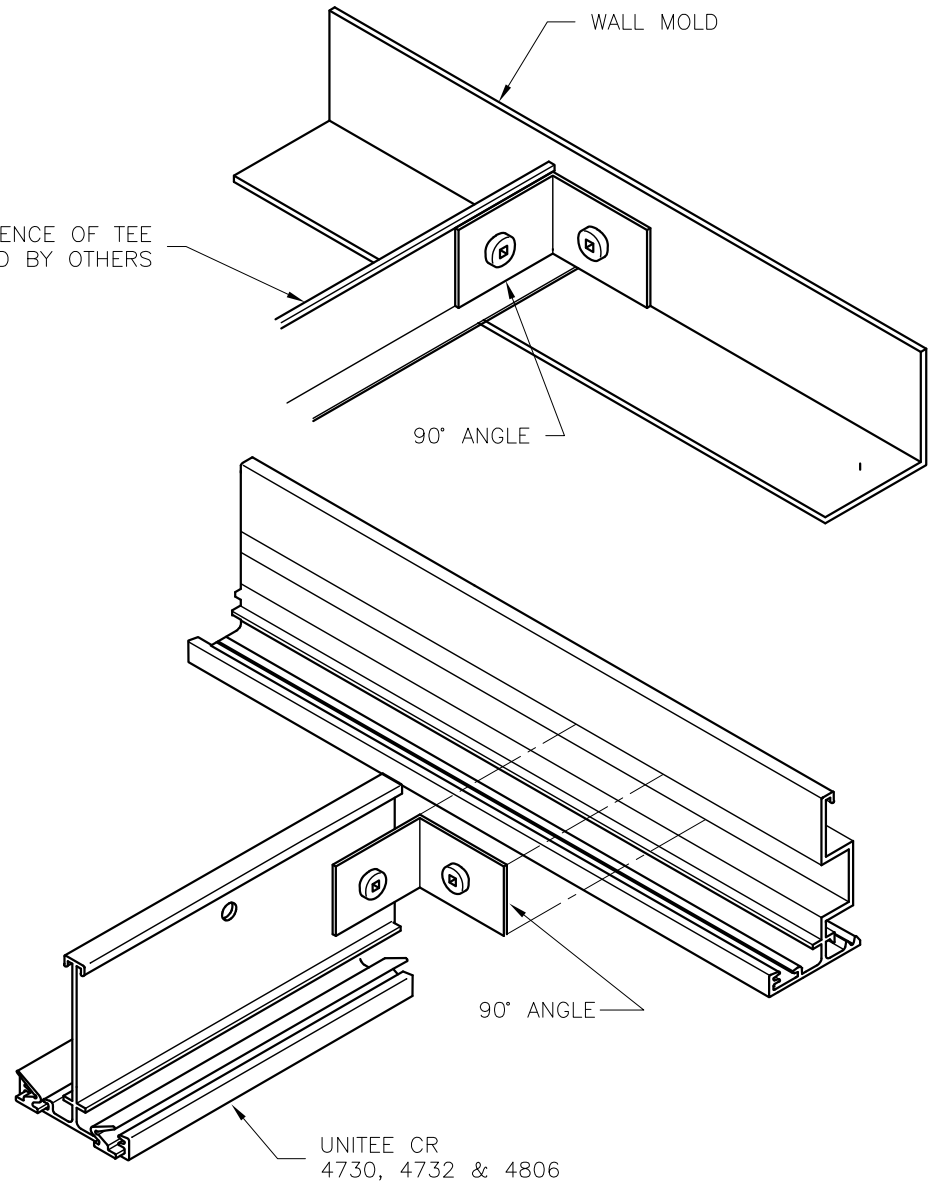


□ PROFILE 4826
UNITEE



□ PROFILE 4733
UNITEE CR

REFERENCE OF TEE
SUPPLIED BY OTHERS



MATERIAL:

- EXTRUDED ALUMINUM

FINISH:

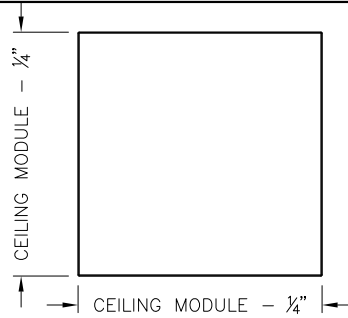
- B12 WHITE POWDER COAT

NOTES:

- C/W 90° ANGLE

ALL METRIC DIMENSIONS () ARE SOFT CONVERTED. IMPERIAL DIMENSIONS ARE CONVERTED TO METRIC AND ROUNDED TO THE NEAREST MILLIMETER.

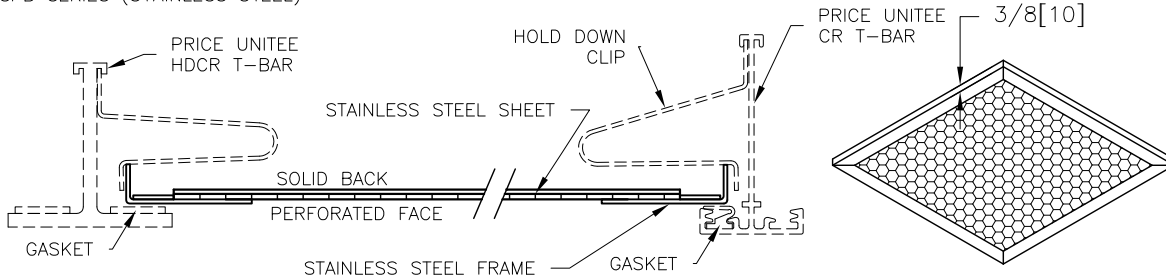
PROJECT:		PRICE [®]	
ENGINEER:			UNITEE (CR) 4805/4826 4733 WALL MOLD
CUSTOMER:		230603	
SUBMITTAL DATE:	SPEC. SYMBOL:	2010/11/29	



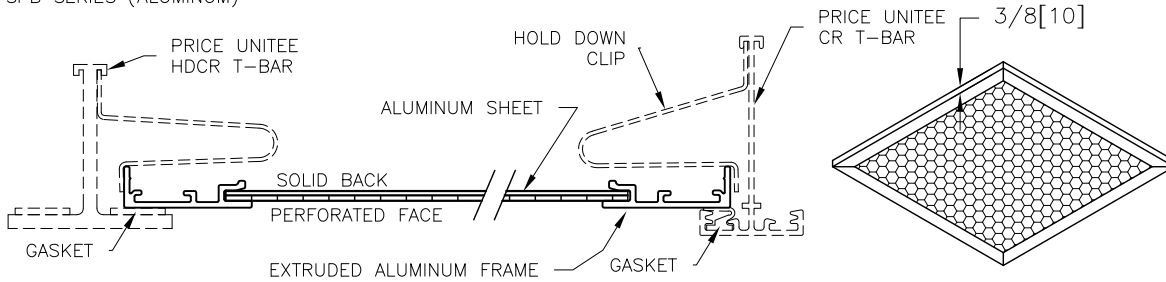
CEILING MODULE
12 X 12
24 X 12
36 X 12
48 X 12
24 X 24
36 X 24
48 X 24
48 X 36
48 X 48 *

* ALUMINUM ONLY

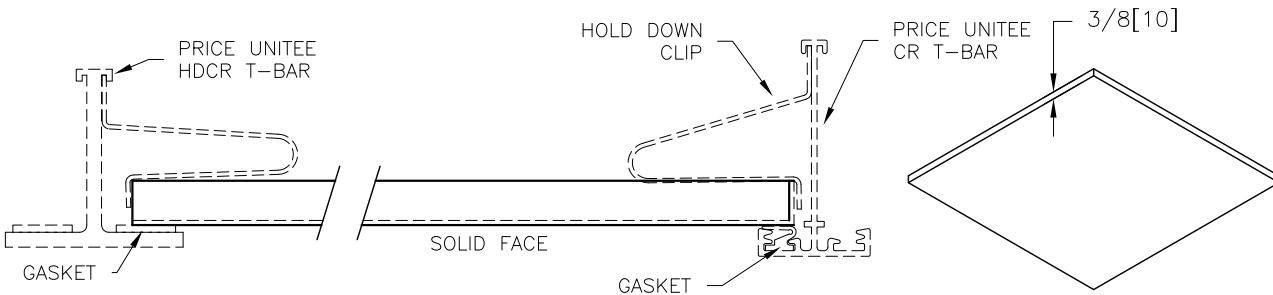
SPB SERIES (STAINLESS STEEL)



SPB SERIES (ALUMINUM)



SC SERIES



MATERIAL:

- ALL ALUMINUM - STANDARD

OPTIONS: ALL STAINLESS STEEL

FINISH:

- B12 WHITE POWDER COAT
- OR
- STAINLESS STEEL #4

NOTES:

- SC PANEL: SOLID FACE, CORELESS, UNPERFORATED.
- SPB PANEL: PERFORATED FACE WITH SOLID BACK AND ALUMINUM EXTRUDED PERIMETER FRAME. SEALED AT THE BACK.

OPTIONS: SPB W/ 13% PERFORATION (TO MATCH PRICE LFD / LFD2 DIFFUSERS)
 SPB W/ 23% PERFORATION (TO MATCH PRICE LFD2 DIFFUSERS)
 SPB W/ 51% PERFORATION (TO MATCH PRICE LFD2 / LFD2 DIFFUSERS)

ALL METRIC DIMENSIONS () ARE SOFT CONVERTED. IMPERIAL DIMENSIONS ARE CONVERTED TO METRIC AND ROUNDED TO THE NEAREST MILLIMETER.

PROJECT:

ENGINEER:

CUSTOMER:

SUBMITTAL DATE:

SPEC. SYMBOL:

PRICE®

RV

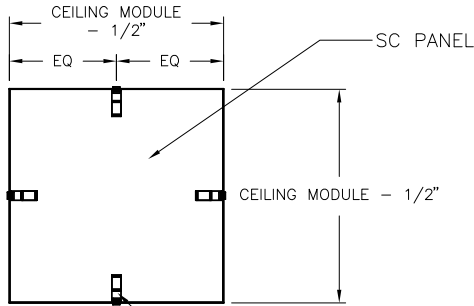
UNITEE CR/HDCR

CEILING PANELS
SC & SPB SERIES

231060

2010/11/29

QUICK CONNECT LOCKING CLIPS (QCLC)
AVAILABLE IN ALUMINUM SC, SC w/ ACCESS, SPB

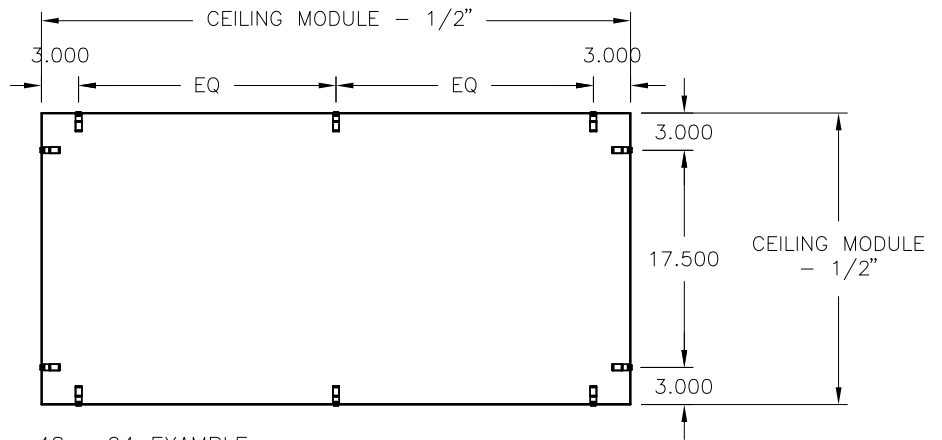


12 x 12 EXAMPLE

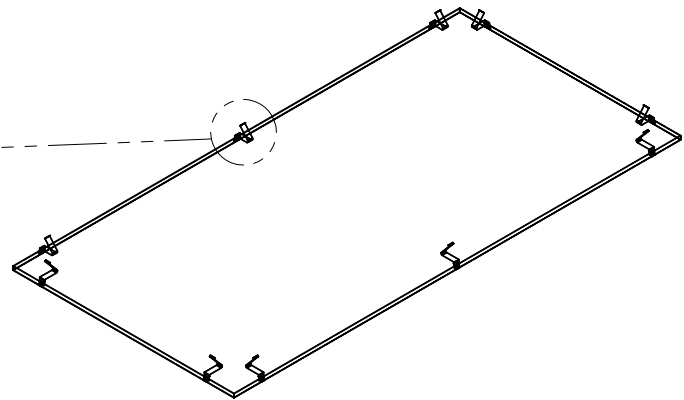
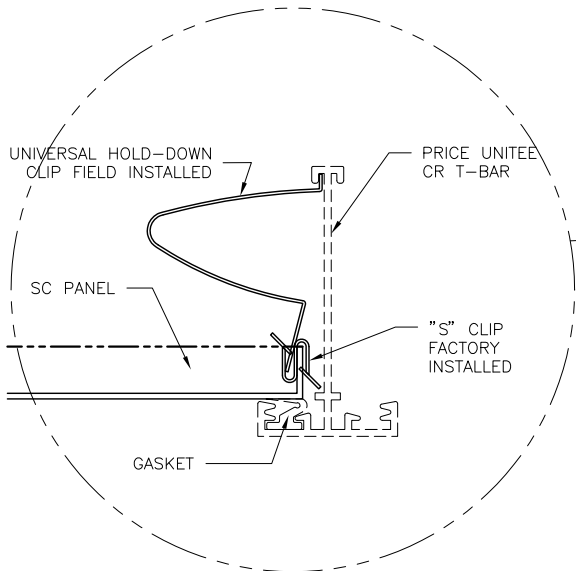
QUICK CONNECT LOCKING CLIP
(PANEL CLIP FIELD INSTALLED TO
FACTORY INSTALLED S-CLIP)

CEILING MODULE	CLIPS REQUIRED
12 X 12	4
24 X 12	6
24 X 24	8
36 X 12	8
36 X 24	10
48 X 12	8
48 X 24	10
48 X 36	12
48 X 48	12


HOLD DOWN CLIPS ARE INSTALLED ON ALL SIDES OF THE PANEL. ON EACH SIDE, THE FIRST CLIP IS INSTALLED NO MORE THAN 3" FROM THE CORNER OF THE PANEL, THE NEXT CLIP IS NO MORE THAN 24" FROM THE FIRST CLIP.

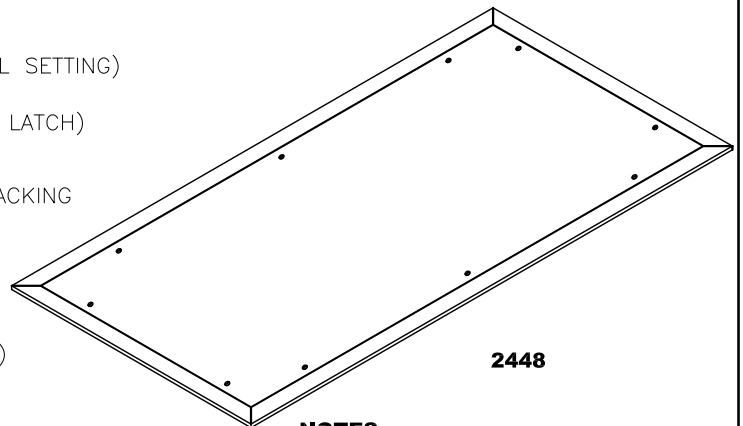
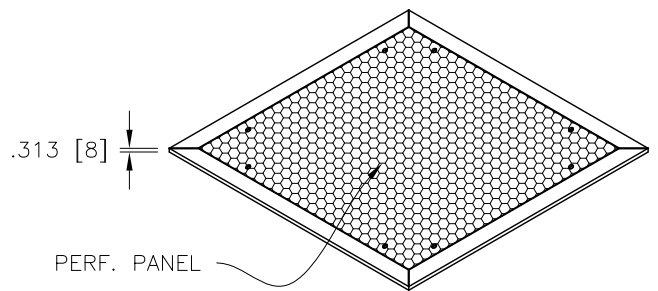
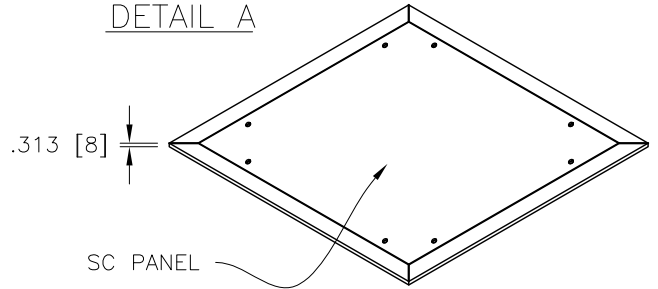
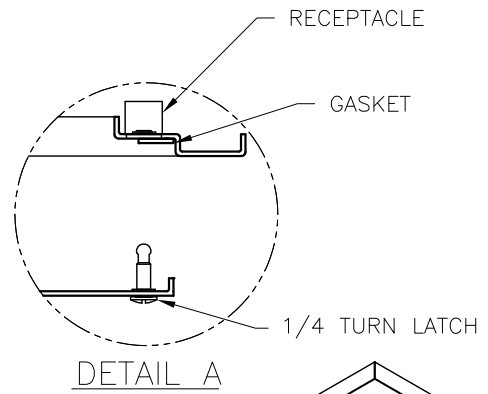
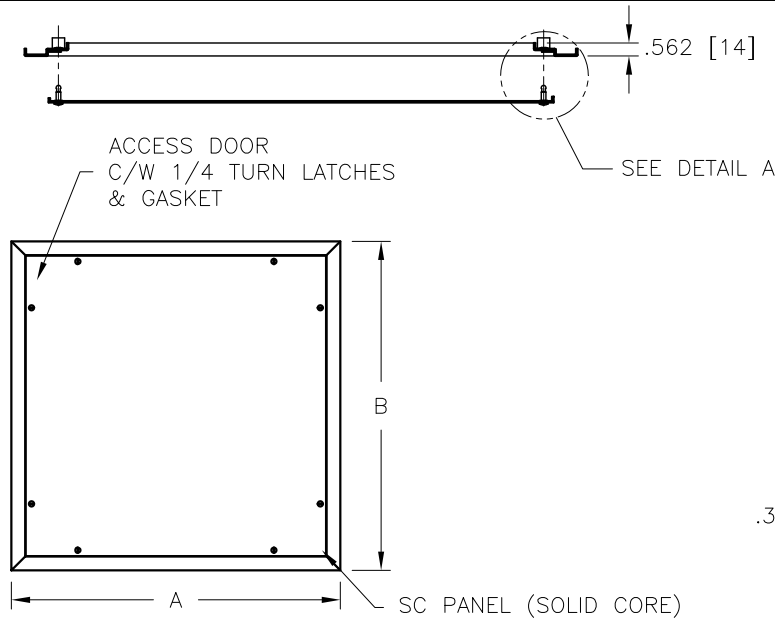


48 x 24 EXAMPLE



ALL METRIC DIMENSIONS () ARE SOFT CONVERTED. IMPERIAL DIMENSIONS ARE CONVERTED TO METRIC AND ROUNDED TO THE NEAREST MILLIMETER.

PROJECT:			
ENGINEER:			
CUSTOMER:		231060	UNITEE CR/HDCR CEILING PANELS SC & SPB SERIES
SUBMITTAL DATE:	SPEC. SYMBOL:	2010/11/29	



NOTES:
• FACTORY TOLERANCE ± .031 [1]

SIZE	A	B	ACCESS OPENING
1212	11.750" (298)	11.750" (298)	8"(203) x 8"(203)
2412	23.750" (603)	11.750" (298)	20"(508) x 8"(203)
2424	23.750" (603)	23.750" (603)	20"(508) x 20"(508)
3612	35.750" (603)	11.750" (298)	32"(813) x 8"(203)
3624	35.750" (603)	23.750" (603)	32"(813) x 20"(508)
4812	47.750" (1213)	11.750" (298)	44"(1118) x 8"(203)
4824	47.750" (1213)	23.750" (603)	44"(1118) x 20"(508)
4836	47.750" (1213)	35.750" (603)	44"(1118) x 32"(813)
4848	47.750" (1213)	47.750" (1213)	44"(1118) x 44" (1118)

* 4848 NOT AVAILABLE IN STAINLESS STEEL

MATERIAL:

- ALUMINUM – STANDARD (B11 WHITE STERILE WHITE-THERMAL SETTING)
- 1/4" TURN LATCH: PLATED STEEL

OPTIONS: STAINLESS STEEL #4 (& SS 1/4" TURN LATCH)

NOTES:

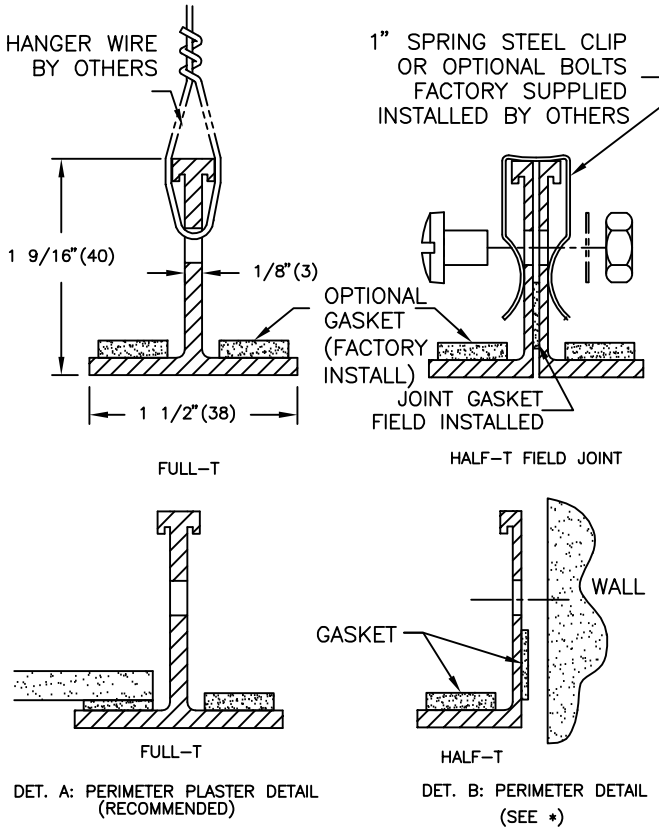
PERFORATED ACCESS DOOR (PAD) – PERF FACE W/ SOLID BACKING

- OPTIONS:**
- W/ 13% PERFORATION (TO MATCH PRICE LFD / LFD2 DIFFUSERS)
 - W/ 23% PERFORATION (TO MATCH PRICE LFD2 DIFFUSERS)
 - W/ 51% PERFORATION (TO MATCH PRICE LFDC / LFD2 DIFFUSERS)

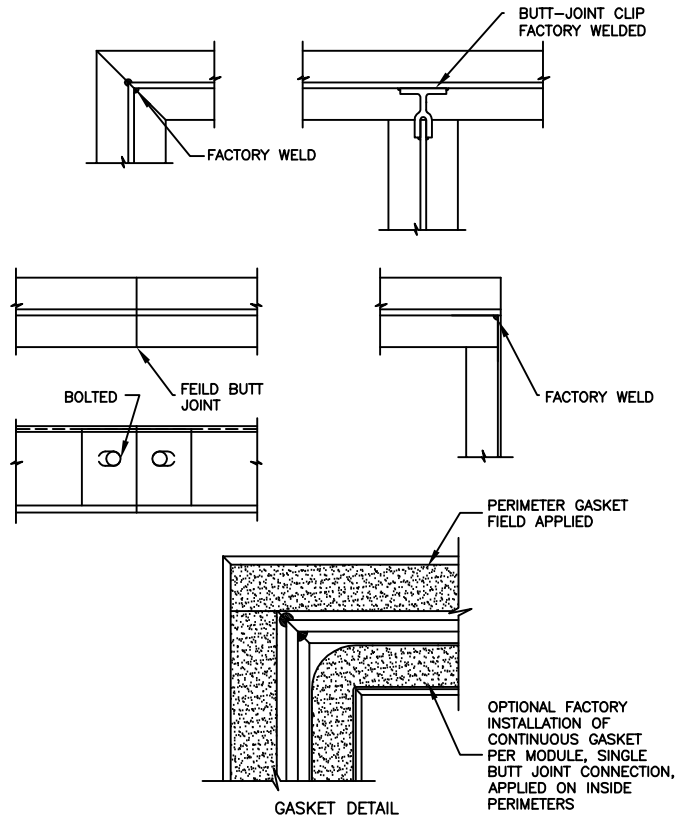
ALL METRIC DIMENSIONS () ARE SOFT CONVERTED. IMPERIAL DIMENSIONS ARE CONVERTED TO METRIC AND ROUNDED TO THE NEAREST MILLIMETER.

PROJECT:		PRICE®	
ENGINEER:			
CUSTOMER:		240558	
SUBMITTAL DATE:	SPEC. SYMBOL:	DEC 2008	

TYPICAL PROFILES



TYPICAL JOINTS



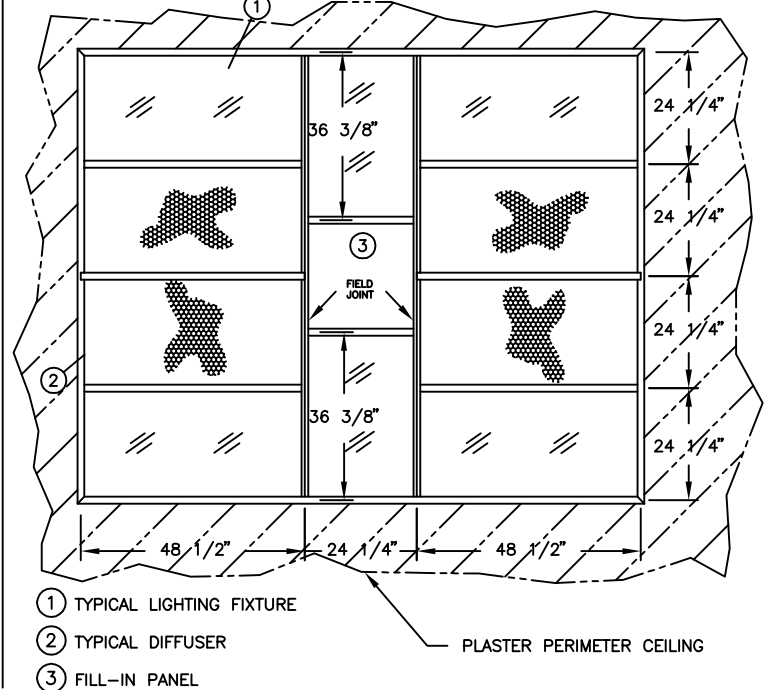
NOTES:

- EXTRUDED ALUMINUM T-BARS 1 1/2(38)x1 1/2(38)x1/8(3)
- CORNERS FACTORY WELDED IN SECTIONS UP TO 10'(3048)x5'(1524)
- SECTIONS FIELD JOINED WITH 1/4" BOLTS AT 12"(305) O/C, CLIPS FACTORY SUPPLIED, FIELD INSTALLED.
- T-BARS FACTORY PREPUNCHED 4.85"(123) O/C FOR HANGER WIRES SUPPLIED BY OTHERS.
- 1/8"(3)x1/2"(13) CLOSED CELL POLYETHYLENE GASKET COUNTINUOUS WITH SINGLE BUTT JOINT, FACTORY INSTALLED ON BACKSIDE OF TEE. ROLL OF OUTSIDE PERIMETER GASKET ALSO SUPPLIED FOR FIELD APPLICATION.
- B12 WHITE POWDER COAT STANDARD FINISH.
- PLASTER PERIMETER CEILING (DET. A) IS RECOMMENDED FOR EASE OF INSTALLATION.
- **HALF TEE PERIMETER (DET. B) IS ALSO AVAILABLE BUT FIELD ADJUSTMENTS TO ADJACENT STRUCTURE MAY BE REQUIRED FOR ACCURATE FIT AND IS THE RESPONSIBILITY OF THE INSTALLER.

OPTIONS:

- HEAVY DUTY SPRINGS CLIP IN PLACE OF BOLTS FOR FIELD INSTALL.
- NO GASKET INSTALLED IN FACTORY, SHIPPED LOOSE.

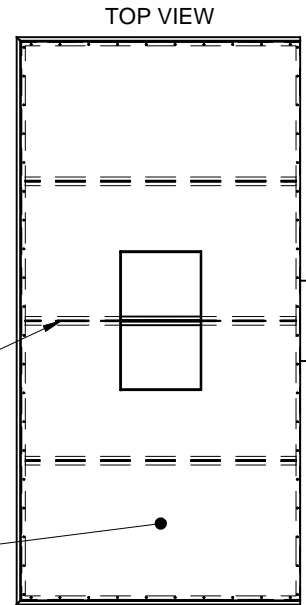
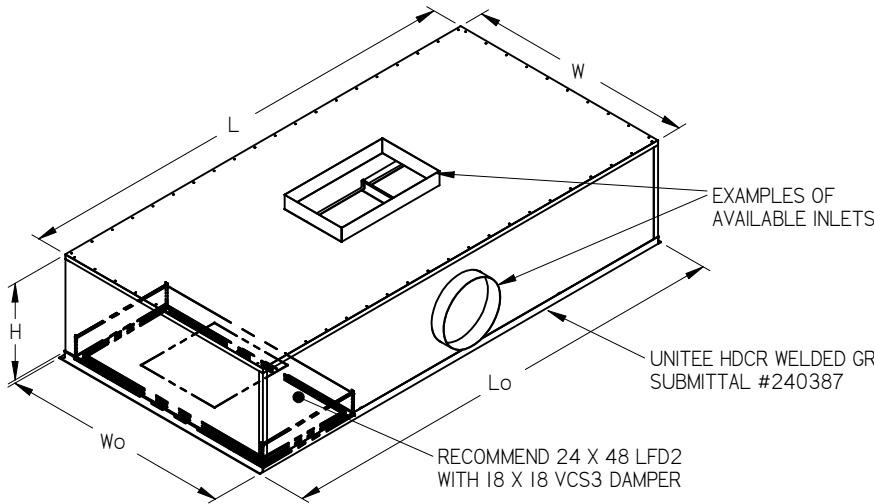
SAMPLE LAYOUT



ALL METRIC DIMENSIONS () ARE SOFT CONVERTED. IMPERIAL DIMENSIONS ARE CONVERTED TO METRIC AND ROUNDED TO THE NEAREST MILLIMETER.

PROJECT:		PRICE®	
ENGINEER:		<i>DS</i>	UNITEE HDCR HEAVY DUTY CLEANROOM CEILING SYSTEM
CUSTOMER:		240387	
SUBMITTAL DATE:	SPEC. SYMBOL:	2010/11/29	

HDCR - PL



NOMINAL SIZES AVAILABLE:			
	L	W	H
MIN	48.500	48.500	18.000
MAX	121.250	97.000	30.000

OVERALL SIZE	FULL TEE PERIMETER	HALF TEE PERIMETER
Wo =	W + 1.5"	W
Lo =	L + 1.5"	L

MODULE SIZED FOR:
 PRICE LFD, LFD2, LFD3
 PRICE CEILING PANEL
 OTHER EQUIP. (LIGHTS ETC.)

- BLACK POLYMER FIBER FREE INSULATION (INTERNAL):**
- 1/4"
 - 1/2"
 - 3/4"
 - 1"

STANDARD CONSTRUCTION:

- UNITEE HDCR 1.5" WIDE FACE TEE - FULLY WELDED
- 18 ga. ALUMINUM PLENUM
- POLYMER FIBER FREE INSULATION (INTERNAL)

FINISH:

- B12 WHITE POWDERCOAT STANDARD FINISH.

INSTALLATION NOTES:

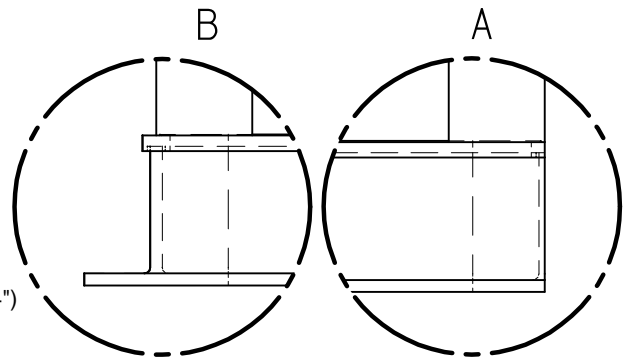
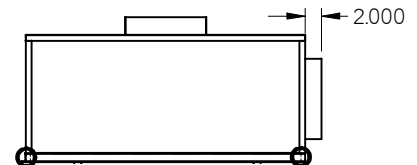
- TO BE INSTALLED IN DRYWALL CUTOUT OF SIZE (Lo + 3/4") X (Wo + 3/4")
- LARGER PLENUMS ARE SUPPLIED IN MULTIPLE SECTIONS FOR FIELD ASSEMBLY
- INSTALLATION AND MOUNTING IS THE RESPONSIBILITY OF THE INSTALLER
- RECOMMEND MINIMUM OF (4) 1/2" THREADED ROD. ADD (1) ROD PER EACH ADDITIONAL 8 SQ FT.

OPTIONS:

- NO GASKET INSTALLED IN FACTORY, SHIPPED LOOSE (SEE SUBMITTAL 240387)

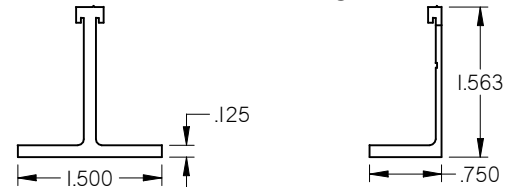
NOTE: REQUEST CUSTOMIZED SUBMITTAL TO SUIT JOB SPECIFIC CONFIGURATION

ALL METRIC DIMENSIONS () ARE SOFT CONVERTED. IMPERIAL DIMENSIONS ARE CONVERTED TO METRIC AND ROUNDED TO THE NEAREST MILLIMETER.



DETAIL B
HDCR FULL TEE

DETAIL A
HDCR HALF TEE



PROJECT:

ENGINEER:

CUSTOMER:

SUBMITTAL DATE:

SPEC. SYMBOL:

PRICE

DS

248726

2010/12/15

**HDCR-PL
INTEGRATED PLENUM**