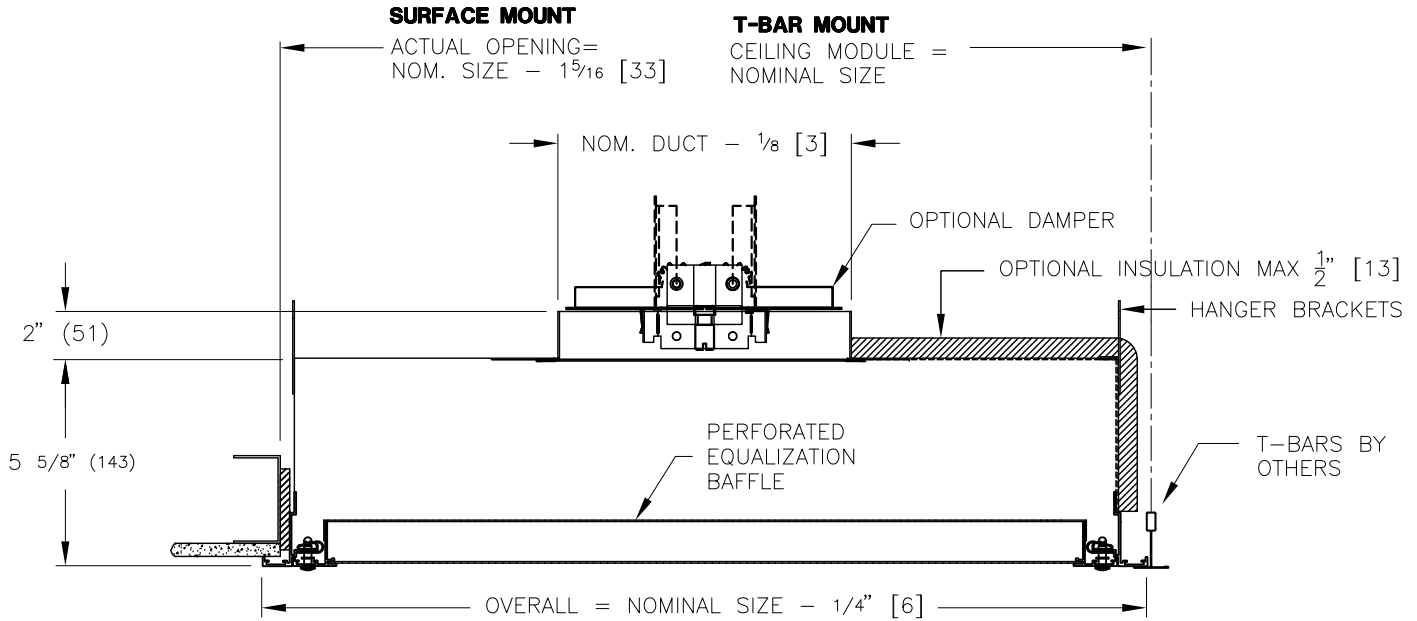
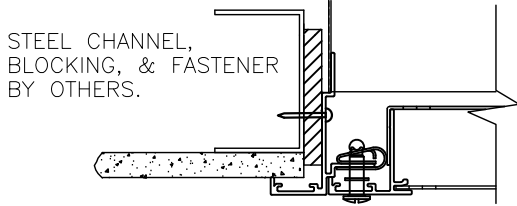


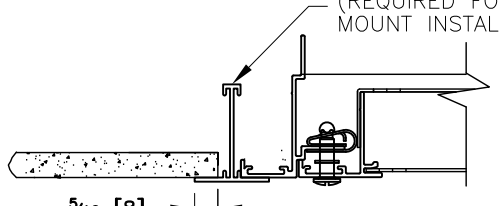
LFD LAMINAR FLOW DIFFUSER



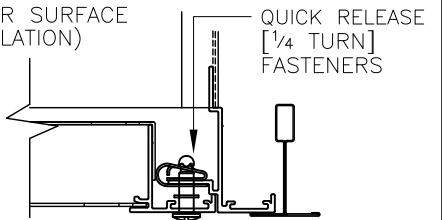
SURFACE MOUNT DETAIL
(UNINSULATED PLENUMS ONLY)



SURFACE MOUNT DETAIL
(INSULATED PLENUMS)



T-BAR MOUNT DETAIL



NOMINAL SIZES

IMPERIAL		HARD METRIC
INLET SIZES	L x W	L x W
6, 7, 8	24x12 (610x305)	600 x 300
6, 7, 8	36x12 (914X305)	900 x 300
6, 7, 8	48x12 (1219X305)	1200 x 300
6, 7, 8	60x12 (1524x305)	1500 x 300
6, 7, 8	72x12 (1829X305)	1800 x 300
6, 7, 8, 10, 12	24x24 (610X610)	600 x 600
6, 7, 8, 10, 12	36x24 (914X610)	900 x 600
6, 7, 8, 10, 12	48x24 (1219X610)	1200 x 600
6, 7, 8, 10, 12	60x24 (1524X610)	1500 x 600
6, 7, 8, 10, 12	72x24 (1829X610)	1800 x 600

DIFFUSER:

MATERIAL:

- PERFORATED MATERIAL – ALUMINUM
- PLENUM – ALUMINUM
- DIFFUSER FRAMES – EXTRUDED ALUMINUM
- QUICK RELEASE [1/4 TURN] FASTENERS – PLATED STEEL

FINISH:

- DIFFUSER – B12 WHITE POWDER COAT
- QUICK RELEASE [1/4 TURN] FASTENERS – BRIGHT PLATED

OPTIONS:

- AFI: ALUMINUM FOIL- BACKED INSULATION
(FOR SURFACE MOUNT; SELECT ONE OF THE OPTIONS BELOW)
 - APF PLASTER FRAME
 - APFG PLASTER FRAME W/ GASKET
- VCR8E DAMPER – COATED STEEL PAINTED B12 WHITE POWDER COAT
- VCR8ESS DAMPER – STAINLESS STEEL
- STAINLESS STEEL FASTENERS AND HARDWARE

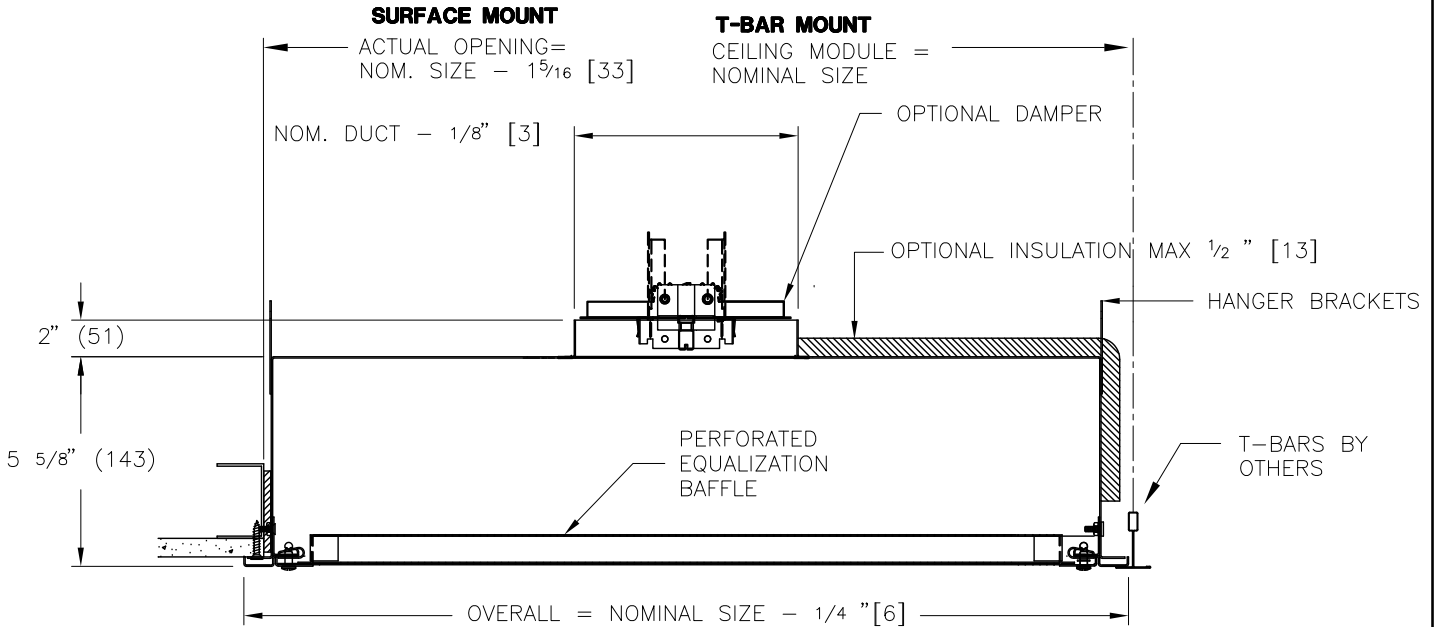
NOTES:

- TWO COATED STEEL SAFETY CABLES PER UNIT

ALL METRIC DIMENSIONS () ARE SOFT CONVERTED. IMPERIAL DIMENSIONS ARE CONVERTED TO METRIC AND ROUNDED TO THE NEAREST MILLIMETER.

PROJECT:		PRICE®	
ENGINEER:		RV	LFD LAMINAR FLOW DIFFUSER
CUSTOMER:		222892	
SUBMITTAL DATE:	SPEC. SYMBOL:	2010/11/26	

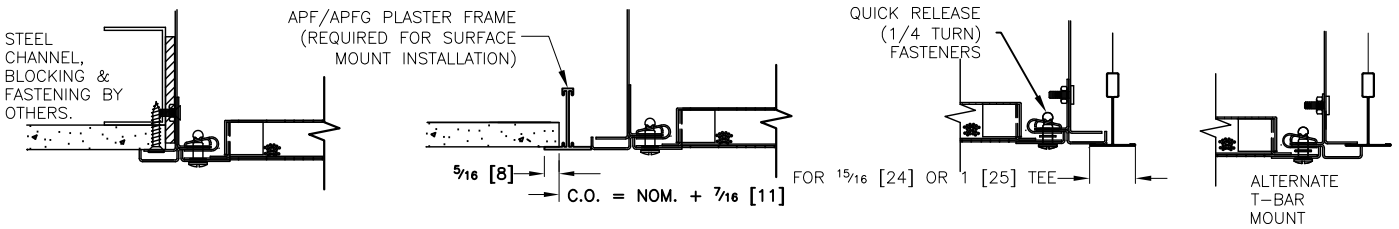
LFDSS STAINLESS STEEL LAMINAR FLOW DIFFUSER



SURFACE MOUNT DETAIL

SURFACE MOUNT DETAIL (INSULATED PLENUMS)

T-BAR MOUNT DETAILS



DIFFUSER:

- MATERIAL**
- PERFORATED MATERIAL – STAINLESS STEEL CONSTRUCTION
 - DIFFUSER FRAMES, PLENUM – 304 STAINLESS STEEL CONSTRUCTION
 - QUICK RELEASE [1/4 TURN] FASTENERS – STAINLESS STEEL

FINISH:

- #4 FINISH ON ALL EXPOSED SURFACES

OPTIONS:

- AFI: ALUMINUM FOIL- BACKED INSULATION (FOR SURFACE MOUNT; SELECT ONE OF THE OPTIONS BELOW)
- APF PLASTER FRAME APFG PLASTER FRAME W/ GASKET
- VCR8E DAMPER – COATED STEEL PAINTED B12 WHITE POWDER COAT
- VCR8ESS DAMPER – STAINLESS STEEL
- SW – SPOTWELDED PLENUM
- CW – CONTINUOUS WELDED PLENUM AND CORNER SEAMS

NOTES:

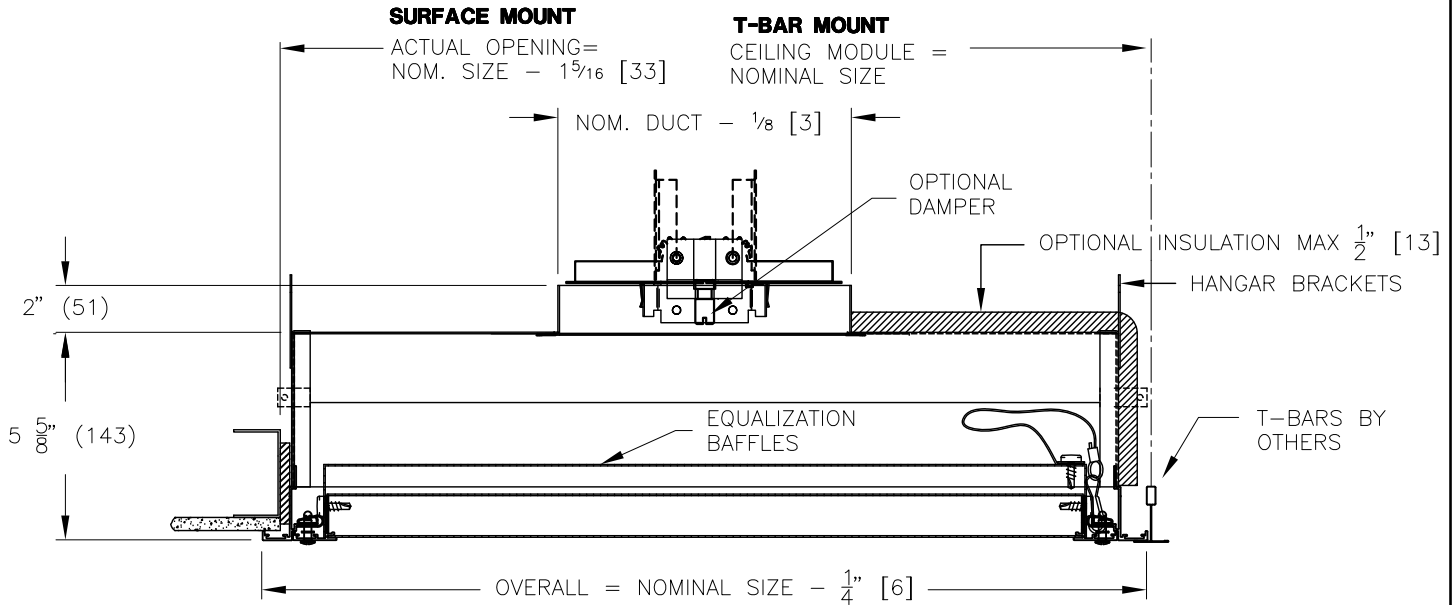
- TWO COATED STEEL SAFETY CABLES PER UNIT
- FACTORY TOLERANCE: +/- 1/32(1)

ALL METRIC DIMENSIONS () ARE SOFT CONVERTED. IMPERIAL DIMENSIONS ARE CONVERTED TO METRIC AND ROUNDED TO THE NEAREST MILLIMETER.

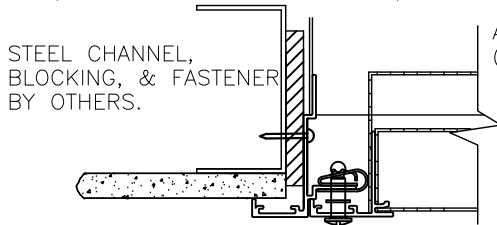
IMPERIAL		HARD METRIC
INLET SIZES	L x W	L x W
6, 7, 8	24x12 (610x305)	600 x 300
6, 7, 8	36x12 (914X305)	900 x 300
6, 7, 8	48x12 (1219X305)	1200 x 300
6, 7, 8	60x12 (1524x305)	1500 x 300
6, 7, 8	72x12 (1829X305)	1800 x 300
6, 7, 8, 10, 12	24x24 (610X610)	600 x 600
6, 7, 8, 10, 12	36x24 (914X610)	900 x 600
6, 7, 8, 10, 12	48x24 (1219X610)	1200 x 600
6, 7, 8, 10, 12	60x24 (1524X610)	1500 x 600
6, 7, 8, 10, 12	72x24 (1829X610)	1800 x 600

PROJECT:		PRICE [®]
ENGINEER:		
CUSTOMER:		LFDSS STAINLESS STEEL LAMINAR FLOW DIFFUSER
SUBMITTAL DATE:	SPEC. SYMBOL:	213594
		2011/03/24

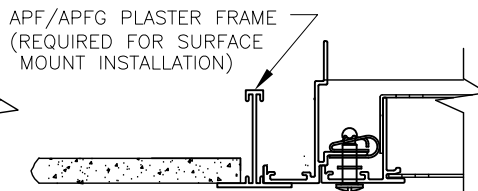
LFD2 LAMINAR FLOW DIFFUSER (DUAL CHAMBER)



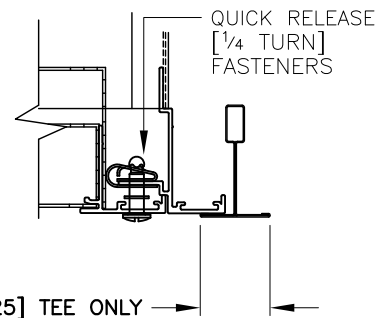
SURFACE MOUNT DETAIL
(UNINSULATED PLENUMS ONLY)



SURFACE MOUNT DETAIL
(INSULATED PLENUMS)



T-BAR MOUNT DETAIL



NOMINAL SIZES

IMPERIAL		HARD METRIC
DUCT	L x W	L x W
8 (203)	48x12 (1219X305)	1200 x 300
8, 10	24x24 (610X610)	600 x 600
8, 10, 12	48x24 (1219X610)	1200 x 600
8, 10, 12	60x24 (1524X610)	1500 x 600

DIFFUSER:

MATERIAL

- PERFORATED FACE AND BAFFLES - ALUMINUM
- PLENUM - ALUMINUM
- DIFFUSER FRAMES - EXTRUDED ALUMINUM
- OUTER DIFFUSER FRAME - STAKED AND CONTINUOUSLY WELDED CORNERS
- QUICK RELEASE [1/4 TURN] FASTENERS AND HARDWARE - STAINLESS STEEL
- DIFFUSER - B12 WHITE POWDER COAT
- TWO COATED STEEL SAFETY CABLES PER UNIT

OPTIONS:

- VCR8E DAMPER - COATED STEEL PAINTED STEEL B12 WHITE POWDER COAT
 - VCR8ESS DAMPER - STAINLESS STEEL
 - AFI: ALUMINUM FOIL- BACKED INSULATION
- (FOR SURFACE MOUNT; SELECT ONE OF THE OPTIONS BELOW)
- APF PLASTER FRAME APFG PLASTER FRAME W/ GASKET

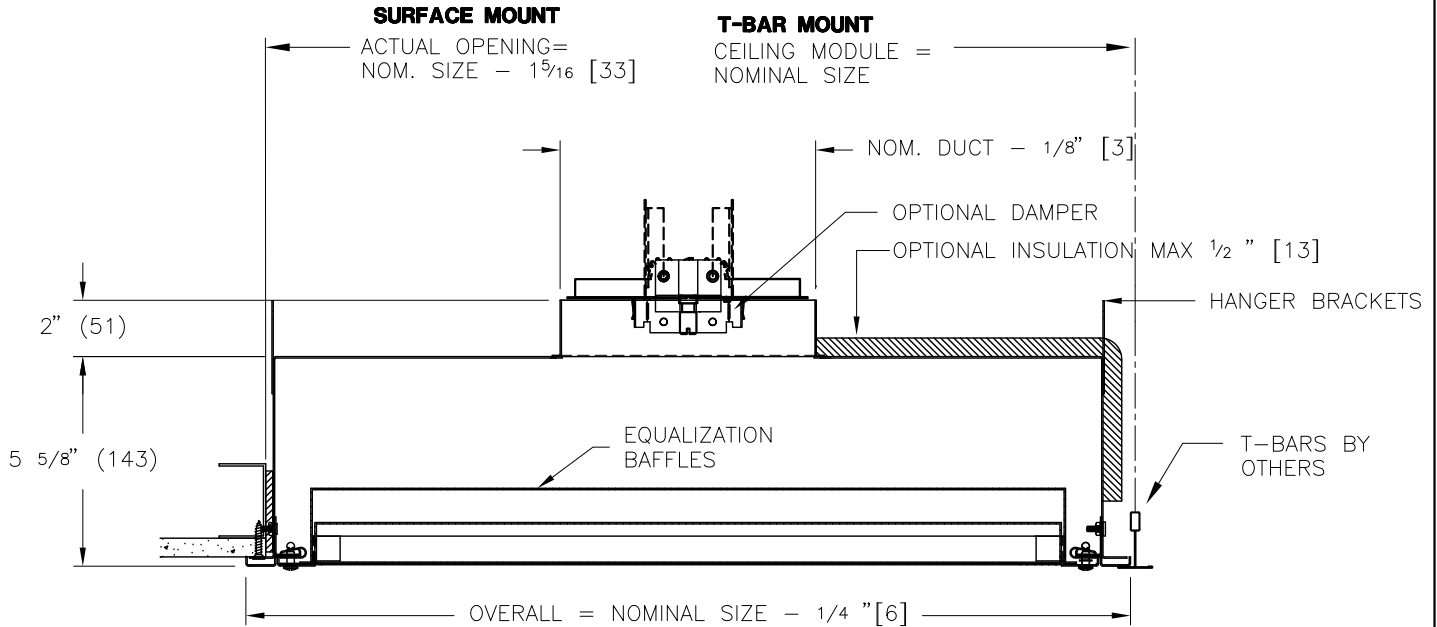
AVAILABLE PERFORATED FACE SCREENS:

- 13% FREE AREA (STANDARD)
- 23% FREE AREA
- 51% FREE AREA

ALL METRIC DIMENSIONS () ARE SOFT CONVERTED. IMPERIAL DIMENSIONS ARE CONVERTED TO METRIC AND ROUNDED TO THE NEAREST MILLIMETER.

PROJECT:		PRICE®	
ENGINEER:			LFD2 LAMINAR FLOW DIFFUSER DUAL CHAMBER
CUSTOMER:		240754	
SUBMITTAL DATE:	SPEC. SYMBOL:	2010/11/29	

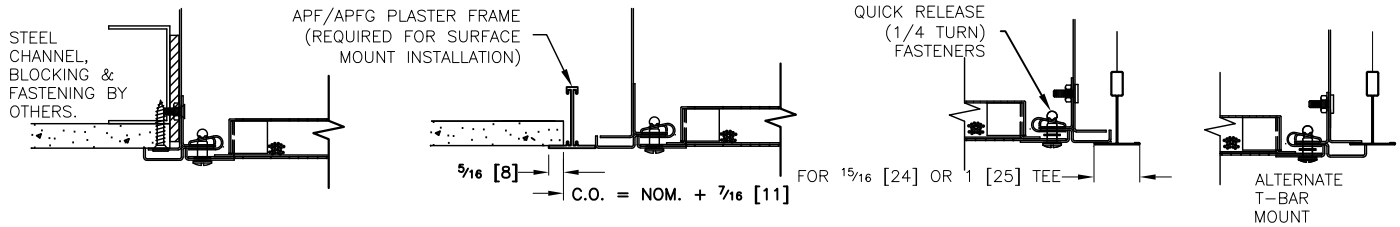
LFD2SS STAINLESS STEEL LAMINAR FLOW DIFFUSER (DUAL CHAMBER)



SURFACE MOUNT DETAIL

SURFACE MOUNT DETAIL (INSULATED PLENUMS)

T-BAR MOUNT DETAILS



NOMINAL SIZES

IMPERIAL		HARD METRIC
DUCT	L x W	L x W
8 (203)	48x12 (1219X305)	1200 x 300
8, 10	24x24 (610X610)	600 x 600
8, 10, 12	48x24 (1219X610)	1200 x 600
8, 10, 12	60x24 (1524X610)	1500 x 600

DIFFUSER:

MATERIAL

- PERFORATED FACE - .037" (0.94MM) STAINLESS STEEL
- DIFFUSER FRAMES, PLENUM - .037 (0.94MM) 304 STAINLESS STEEL
- QUICK RELEASE [1/4 TURN] FASTENERS - STAINLESS STEEL

FINISH

- #4 FINISH ON ALL EXPOSED SURFACES
- TWO COATED STEEL SAFETY CABLES PER UNIT



OPTIONS:

- VCR8E DAMPER - COATED STEEL PAINTED STEEL B12 WHITE POWDER COAT
- VCR8ESS DAMPER - STAINLESS STEEL
- AFI: ALUMINUM FOIL- BACKED INSULATION (FOR SURFACE MOUNT; SELECT ONE OF THE OPTIONS BELOW)
- APF PLASTER FRAME APFG PLASTER FRAME W/ GASKET

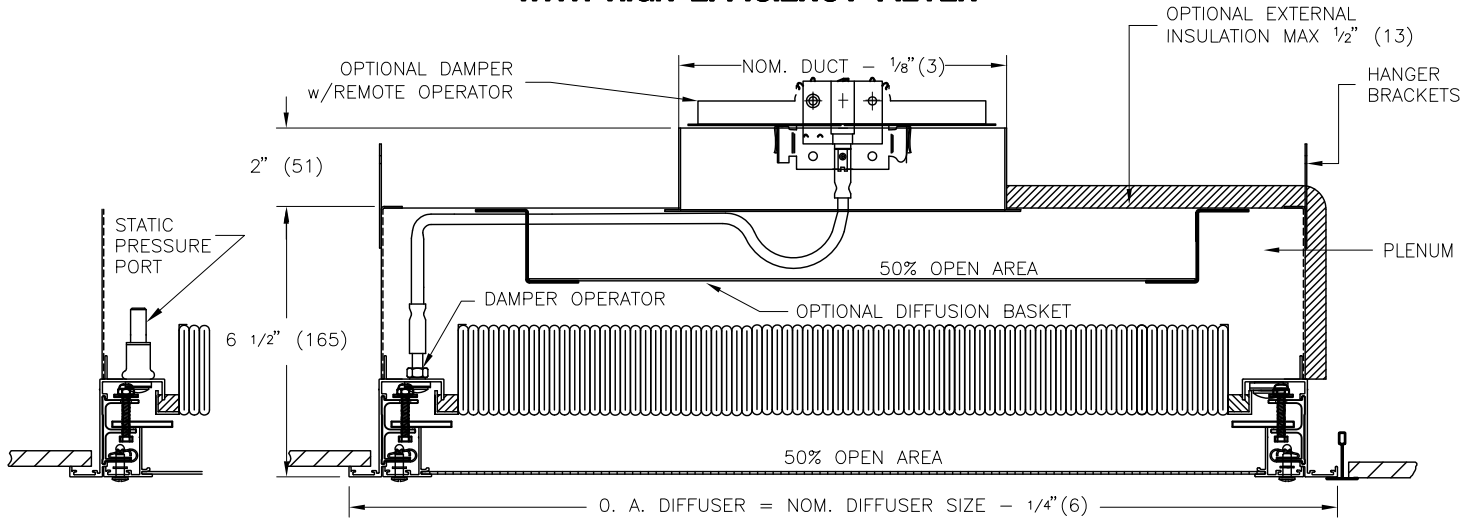
AVAILABLE PERFORATED FACE SCREENS:

- 13% FREE AREA (STANDARD)
- 23% FREE AREA
- 51% FREE AREA

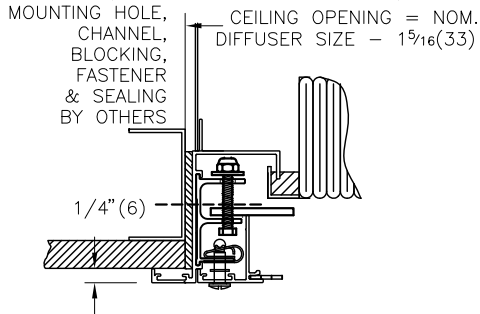
ALL METRIC DIMENSIONS () ARE SOFT CONVERTED. IMPERIAL DIMENSIONS ARE CONVERTED TO METRIC AND ROUNDED TO THE NEAREST MILLIMETER.

PROJECT:			
ENGINEER:			
CUSTOMER:		 240755	LFD2SS STAINLESS STEEL LAMINAR FLOW DIFFUSER DUAL CHAMBER
SUBMITTAL DATE:	SPEC. SYMBOL:	2010/11/29	

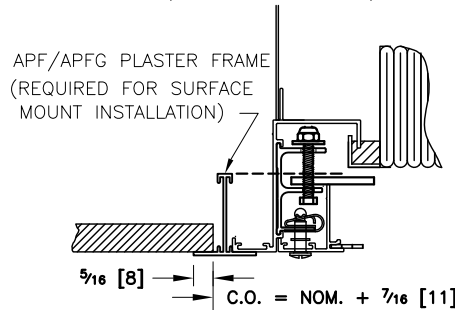
**MODEL LFDC LAMINAR FLOW DIFFUSER
WITH HIGH EFFICIENCY FILTER**



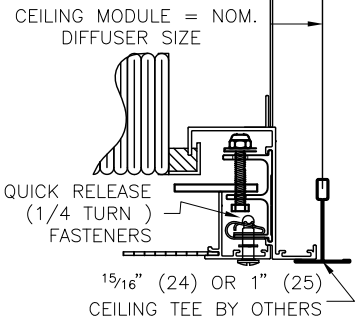
**SURFACE MOUNT
(UNINSULATED PLENUMS ONLY)**



**SURFACE MOUNT DETAIL
(INSULATED PLENUMS)**



T-BAR



	NOMINAL DIFFUSER SIZE	INLET SIZE	FILTER AREA
IMPERIAL	24" X 24"	8", 10", 12"	2.037 SQ. FT.
	24" X 36"	8", 10", 12"	3.464 SQ. FT.
	24" X 42"	8", 10", 12"	4.177 SQ. FT.
	24" X 48"	8", 10", 12"	4.890 SQ. FT.
HARD METRIC	600 X 600	8", 10", 12"	3.043 SQ. FT.
	600 X 1200	8", 10", 12"	6.478 SQ. FT.

NOTES:

- DAMPER REMOTELY OPERATED FROM ROOM SIDE OF FILTER.
 - FACE ACCESSIBLE OPTION ALLOWS ADJUSTMENT THROUGH FACE
 - CLOCK-WISE ADJUSTMENT CLOSES DAMPER
- FILTER PACKAGED SEPARATELY FROM FILTER HOUSING FOR JOB SITE INSTALLATION BY OTHERS.
- PLENUM FACTORY SCANNED FOR LEAKS.
- PLENUM SEALED WITH ACRYLIC LATEX BASE W/ SILICONE ADDITIVE
- STATIC PRESSURE PORT USED TO MEASURE PRESSURE DROP ACROSS FILTER OR TO SAMPLE AEROSOL CONCENTRATIONS BEFORE FILTER WHEN TESTING FILTER FOR LEAKS.
- TWO COATED STEEL SAFETY CABLES PER UNIT
- FACTORY TOLERANCE ± 1/32(1).

OPTIONS:

- AFI: ALUMINUM FOIL-BACKED INSULATION (FOR SURFACE MOUNT; SELECT ONE OF THE OPTIONS BELOW)
 - APF PLASTER FRAME
 - APFG PLASTER FRAME W/ GASKET
- 8EC DAMPER WITH REMOTE OPERATOR - B12 WHITE POWDER COAT
- 8ESSC DAMPER WITH REMOTE OPERATOR - STAINLESS STEEL
- 8ECF DAMPER WITH FACE ACCESS REMOTER OPERATOR - B12 WHITE POWDER COAT
- 8ESSCF DAMPER WITH FACE ACCESS REMOTE OPERATOR - STAINLESS STEEL
- INLET DIFFUSION BASKET
- STAINLESS STEEL FASTENERS AND HARDWARE
- LED FILTER INDICATOR
 - FACTORY INSTALLED
 - FIELD INSTALLED

FILTER SELECTION:

- HE: 95% (.3 MICRON)
- HEPA: 99.99% (.3 MICRON)
- ULPA: 99.999% (.12 MICRON)
- FRB: FILTER REPLACEMENT BAFFLE

MATERIAL:

PERFORATED PLENUM SCREEN AND FRAME - ALUMINUM
DIFFUSER FRAMES - EXTRUDED ALUMINUM
OUTER DIFFUSER FRAME - STAKED AND CONTINUOUSLY WELDED CORNERS
QUICK RELEASE (1/4 TURN) FASTENERS - PLATED STEEL

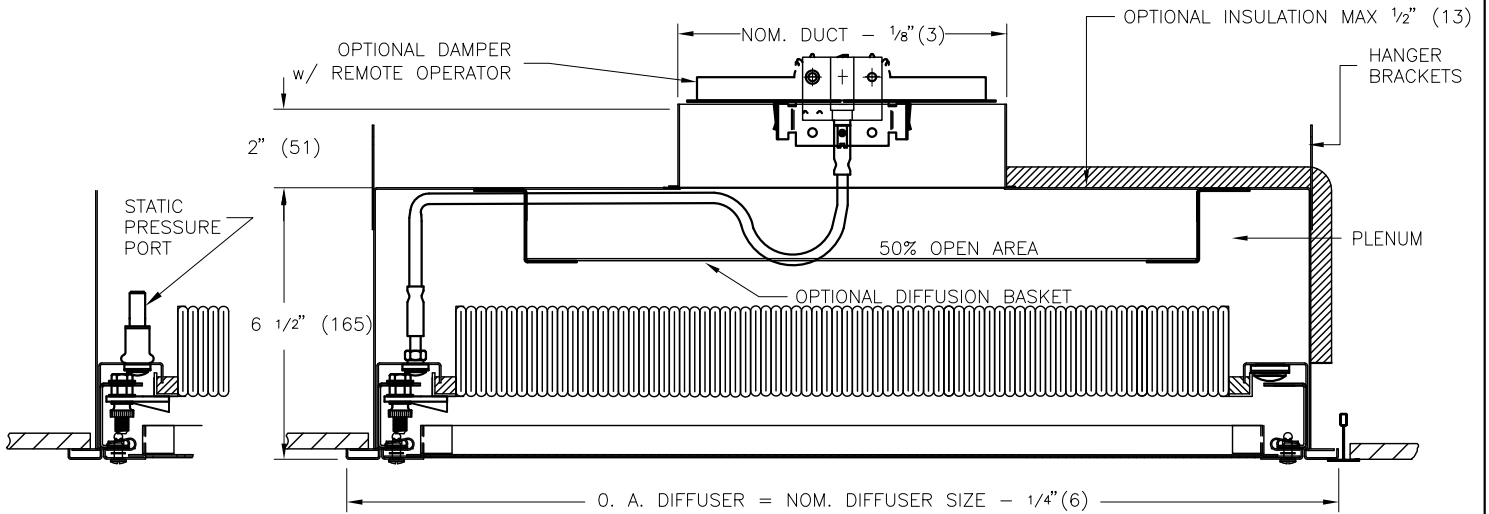
FINISH:

PERFORATED SCREEN, PLENUM AND FRAME : B12 WHITE POWDER COAT

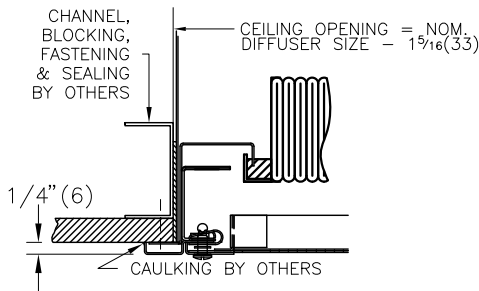
ALL METRIC DIMENSIONS () ARE SOFT CONVERTED. IMPERIAL DIMENSIONS ARE CONVERTED TO METRIC AND ROUNDED TO THE NEAREST MILLIMETER.

PROJECT:		PRICE [®]
ENGINEER:		
CUSTOMER:		LFDC
SUBMITTAL DATE:		LAMINAR FLOW DIFFUSER C/W HIGH EFFICIENCY FILTER
SPEC. SYMBOL:		222482
		2010/11/29

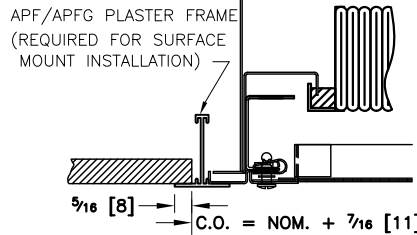
MODEL LFD CSS STAINLESS STEEL LAMINAR FLOW DIFFUSER WITH HIGH EFFICIENCY FILTER



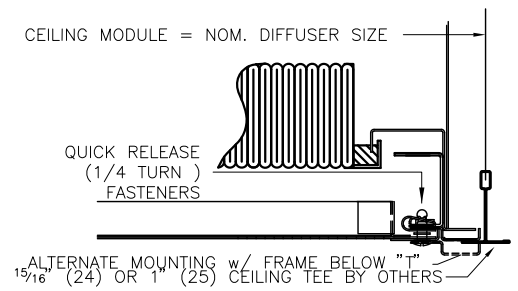
SURFACE MOUNT



SURFACE MOUNT DETAIL (INSULATED PLENUMS)



T-BAR



	NOMINAL DIFFUSER SIZE	INLET SIZE	FILTER AREA
IMPERIAL	24" X 24"	8", 10", 12"	2.037 SQ. FT.
	24" X 36"	8", 10", 12"	3.464 SQ. FT.
	24" X 42"	8", 10", 12"	4.177 SQ. FT.
HARD METRIC	24" X 48"	8", 10", 12"	4.890 SQ. FT.
	600 X 600	8", 10", 12"	3.043 SQ. FT.
	600 X 1200	8", 10", 12"	6.478 SQ. FT.

NOTE:

- DAMPER REMOTELY OPERATED FROM ROOM SIDE OF FILTER.
- FILTER PACKAGED SEPARATELY FROM FILTER HOUSING FOR JOB SITE INSTALLATION BY OTHERS.
- PLENUM FACTORY DOP SCANNED FOR LEAKS USING METHODS CORRESPONDING TO IES STANDARD IES-RP-CC001.3
- PLENUM SEALED WITH ACRYLIC LATEX BASE W/ SILICONE ADDITIVE
- STATIC PRESSURE PORT USED TO MEASURE PRESSURE DROP ACROSS FILTER OR TO SAMPLE AEROSOL CONCENTRATIONS BEFORE FILTER WHEN TESTING FILTER FOR LEAKS.
- TWO COATED STEEL SAFETY CABLES PER UNIT
- FACTORY TOLERANCE ± 1/32(1).

OPTIONS:

- AFI: ALUMINUM FOIL-BACKED INSULATION (FOR SURFACE MOUNT; SELECT ONE OF THE OPTIONS BELOW)
- APF PLASTER FRAME APFG PLASTER FRAME W/ GASKET
- BEC DAMPER - B12 WHITE POWDER COAT
- BESSC DAMPER - STAINLESS STEEL
- BECF FACE ACCESS DAMPER - B12 WHITE POWDER COAT
- BESSCF FACE ACCESS DAMPER - STAINLESS STEEL
- INLET DIFFUSION BASKET
- LED FILTER INDICATOR:
- FACTORY INSTALLED FIELD INSTALLED

FILTER SELECTION:

- HE: 95% (.3 MICRON)
- HEPA: 99.99% (.3 MICRON)
- ULPA: 99.999% (.12 MICRON)
- FILTER REPLACEMENT BAFFLE (ALUMINUM)

MATERIAL:

PERFORATED SCREEN, FRAME AND PLENUM : .037" (0.94mm) 304 STAINLESS STEEL
 QUICK RELEASE (1/4 TURN) FASTENERS : STAINLESS STEEL

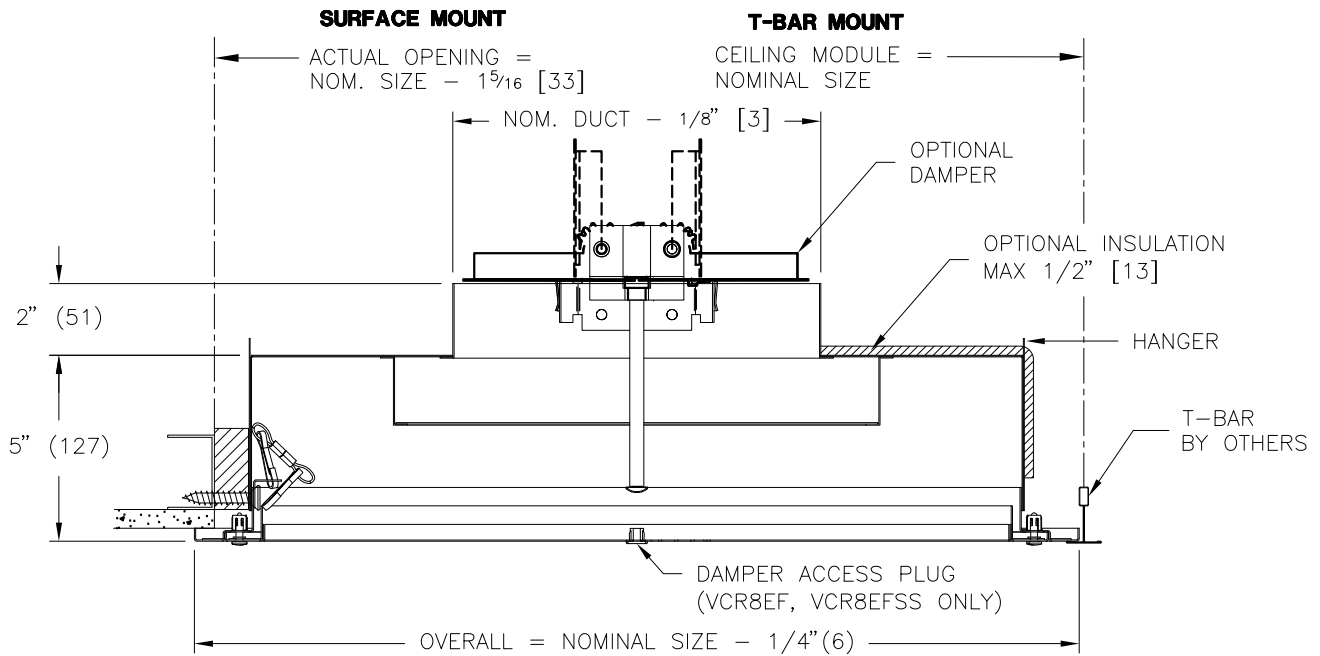
FINISH:

#4 FINISH ON ALL EXPOSED SURFACES

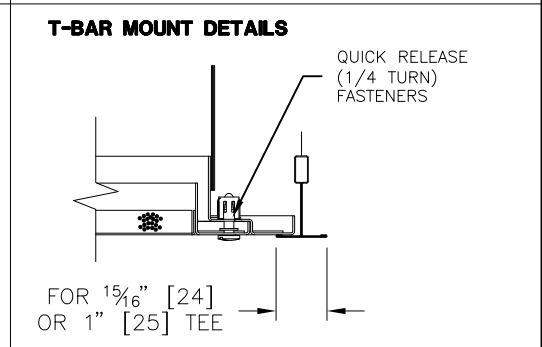
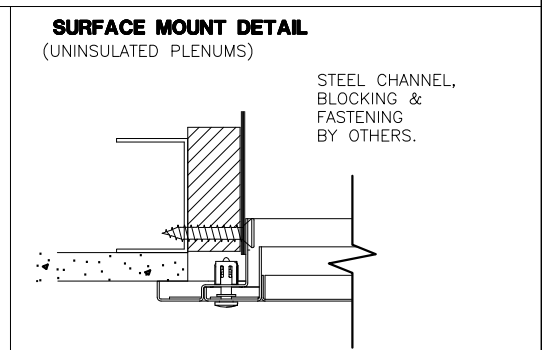
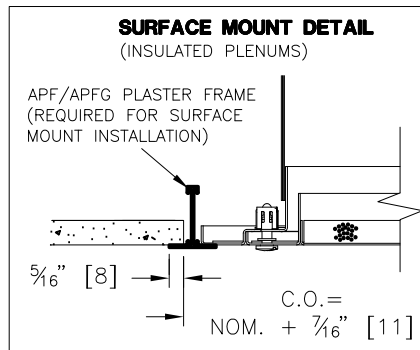
ALL METRIC DIMENSIONS () ARE SOFT CONVERTED. IMPERIAL DIMENSIONS ARE CONVERTED TO METRIC AND ROUNDED TO THE NEAREST MILLIMETER.

PROJECT:		PRICE®
ENGINEER:		
CUSTOMER:		RV
SUBMITTAL DATE:		237773
SPEC. SYMBOL:		2010/11/29
		LFD CSS STAINLESS STEEL LAMINAR FLOW DIFFUSER C/W HIGH EFFICIENCY FILTER

LFDST STEEL LAMINAR FLOW DIFFUSER



IMPERIAL	
INLET SIZES	L x W
6, 7, 8, 10, 12	24x24 (610X610)
6, 7, 8, 10, 12	48x24 (1219X610)



DIFFUSER:

MATERIAL

- ALL STEEL CONSTRUCTION
- QUICK RELEASE [1/4 TURN] FASTENERS – ZINC PLATED STEEL

OPTIONS:

- AFI: ALUMINUM FOIL- BACKED INSULATION (FOR SURFACE MOUNT; SELECT ONE OF THE OPTIONS BELOW)
 - APF PLASTER FRAME APFG PLASTER FRAME W/ GASKET
- VCR8E – STEEL FULL FLOW DAMPER (PAINTED B12)
- VCR8ESS – STAINLESS STEEL FULL FLOW DAMPER
- VCR8EF – FACE ACCESSIBLE STEEL FULL FLOW DAMPER (PAINTED B12)
- VCR8EFSS – FACE ACCESSIBLE STAINLESS STEEL FULL FLOW DAMPER

FINISH:

- B12, WHITE POWDER COAT (OPTIONAL FINISHES AVAILABLE)

NOTES:

- TWO COATED STEEL SAFETY CABLES PER UNIT
- FACTORY TOLERANCE: $\pm / - 1/32 (1)$

ALL METRIC DIMENSIONS () ARE SOFT CONVERTED. IMPERIAL DIMENSIONS ARE CONVERTED TO METRIC AND ROUNDED TO THE NEAREST MILLIMETER.

PROJECT:		PRICE [®]	
ENGINEER:			LFDST STEEL CONSTRUCTION LAMINAR FLOW DIFFUSER
CUSTOMER:		258530	
SUBMITTAL DATE:	SPEC. SYMBOL:	2011/12/21	