

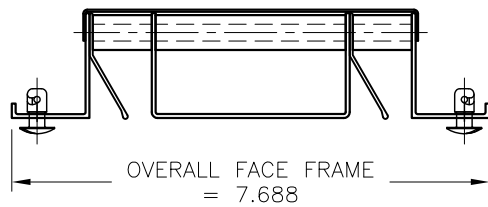
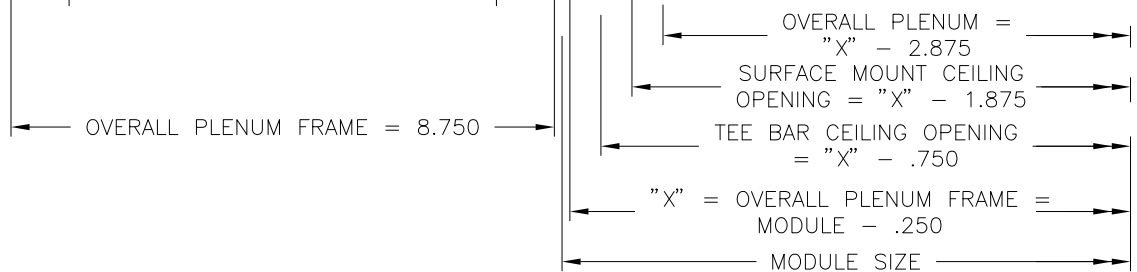
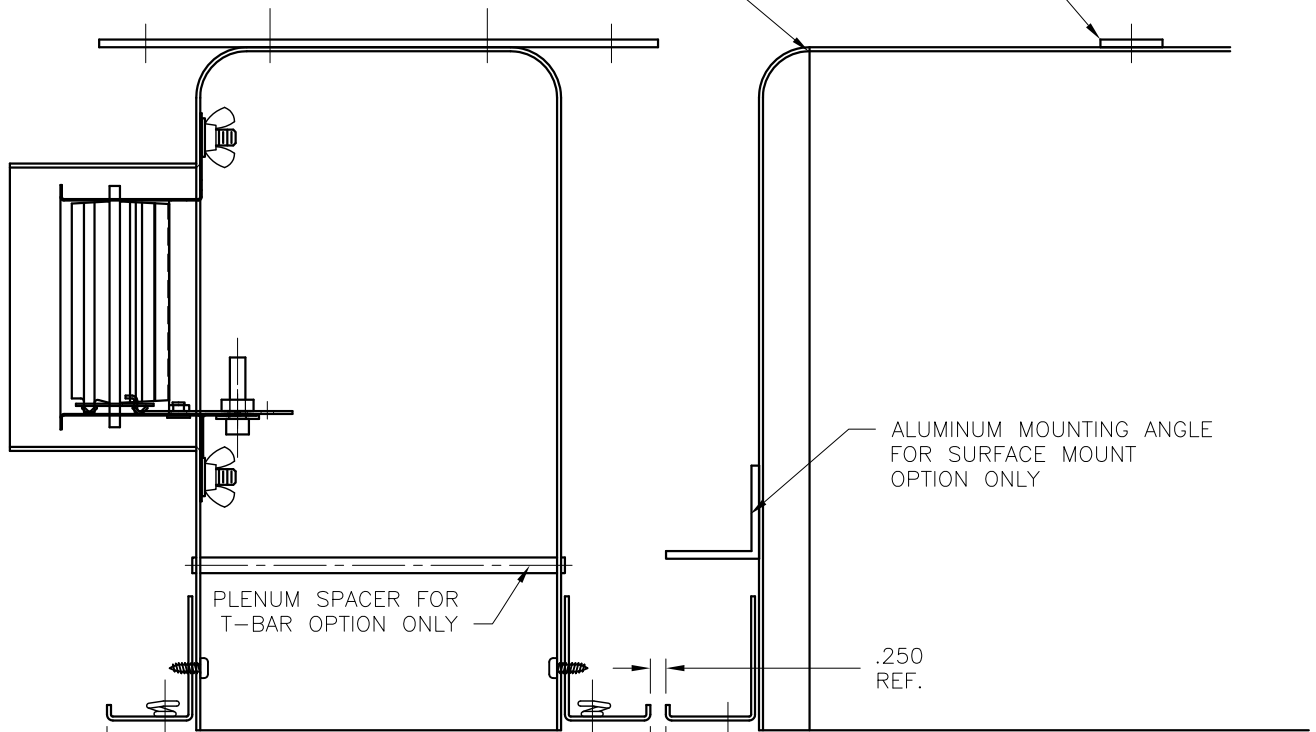


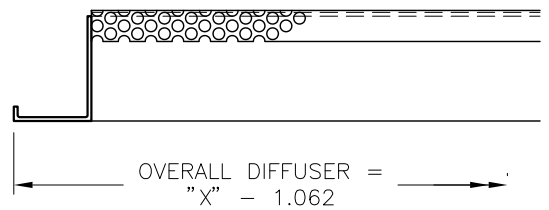
PROJECT:		
ENGINEER:		
CUSTOMER:		
SUBMITTAL DATE:		248116
SPEC. SYMBOL:		2012/01/26

.125" PRE PUNCHED HANGER SUPPLIED.
 INSTALLED AT 36.0" MIN, 60.0" MAX
 ON JOB SITE
 - BY OTHERS.

CONTINUOUS WELDED PLENUM JOINTS
 UNLESS OTHERWISE SPECIFIED ON SHEET 4.



TYPICAL END SECTION



TYPICAL SIDE SECTION

PROJECT:

ENGINEER:

CUSTOMER:

SUBMITTAL DATE:

SPEC. SYMBOL:

PRICE[®]

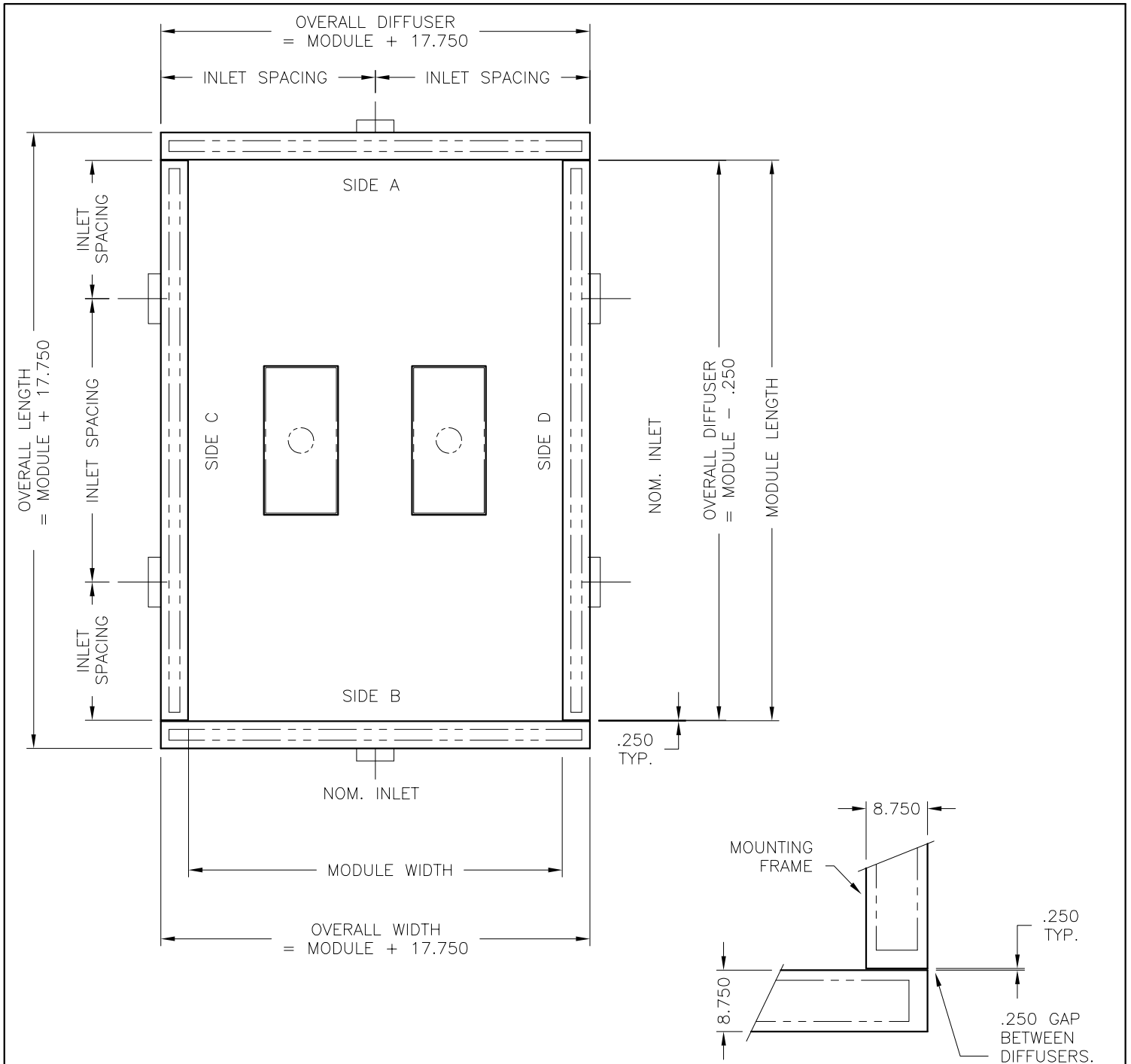
MSL

248116

2010/12/21

HORD/AL

ALUMINUM
 HOSPITAL OPERATING
 ROOM DIFFUSER

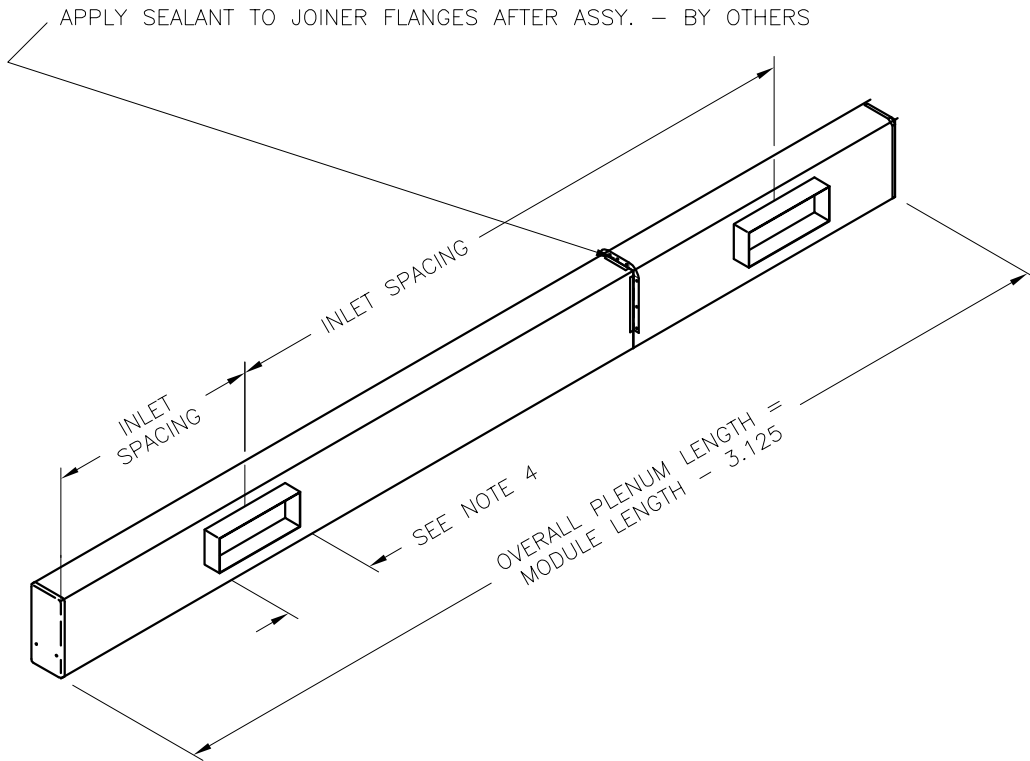


OVERALL DIFFUSER FACE (LENGTH) = MODULE - 1.312
 OVERALL MOUNTING FRAME (LENGTH) = MODULE - .250

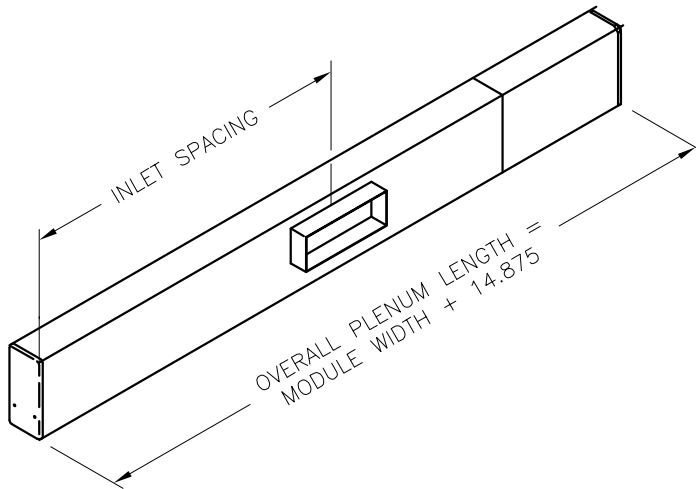
OVERALL DIFFUSER FACE (WIDTH) = MODULE + 16.687
 OVERALL MOUNTING FRAME (WIDTH) = MODULE + 17.750

PROJECT:		PRICE [®]	
ENGINEER:			HORD/AL ALUMINUM HOSPITAL OPERATING ROOM DIFFUSER
CUSTOMER:			
SUBMITTAL DATE:	SPEC. SYMBOL:	2012/01/26	

SIDE C & D



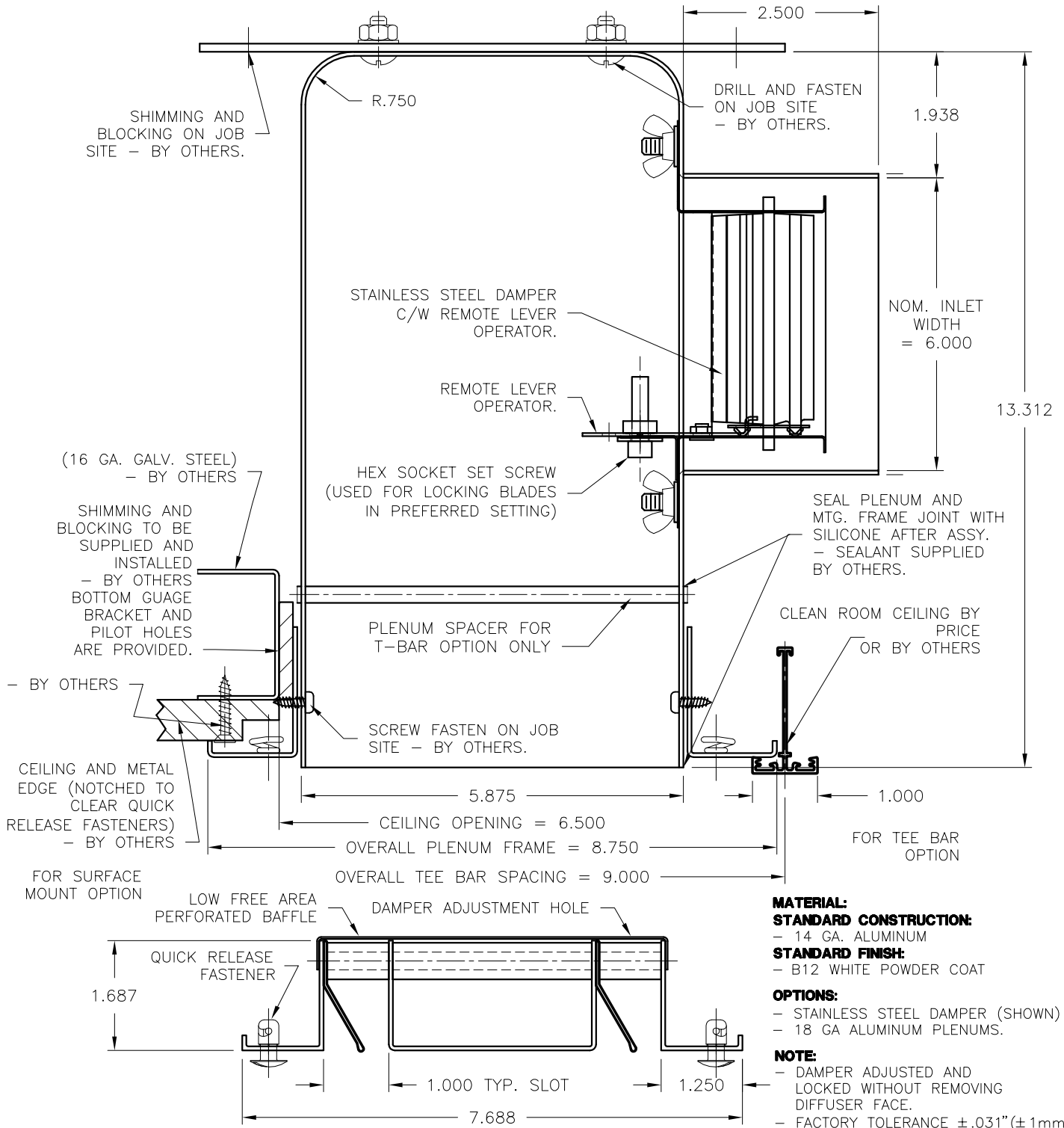
SIDE A & B



NOTES:

1. RECOMMENDED SLOT AIRFLOW IS 25-45 CFM/FT.
2. MAXIMUM INLET VELOCITY IS 500 FPM.
3. RECOMMENDED MINIMUM OF ONE INLET FOR EVERY 120" OF PLENUM LENGTH.
4. INLET SIZE LENGTH MINIMUM 6" & MAXIMUM 48".

PROJECT:		PRICE [®]	
ENGINEER:		<div style="border: 1px solid black; padding: 2px; display: inline-block;"> RE: NH </div>	
CUSTOMER:		248116	
SUBMITTAL DATE:	SPEC. SYMBOL:	2012/01/26	
		HORD/AL ALUMINUM HOSPITAL OPERATING ROOM DIFFUSER	



MATERIAL:
STANDARD CONSTRUCTION:
 - 14 GA. ALUMINUM
STANDARD FINISH:
 - B12 WHITE POWDER COAT
OPTIONS:
 - STAINLESS STEEL DAMPER (SHOWN)
 - 18 GA ALUMINUM PLENUMS.
NOTE:
 - DAMPER ADJUSTED AND LOCKED WITHOUT REMOVING DIFFUSER FACE.
 - FACTORY TOLERANCE ±.031" (±1mm)

PROJECT:



ENGINEER:

RS
NH

HORD/AL

CUSTOMER:

250571

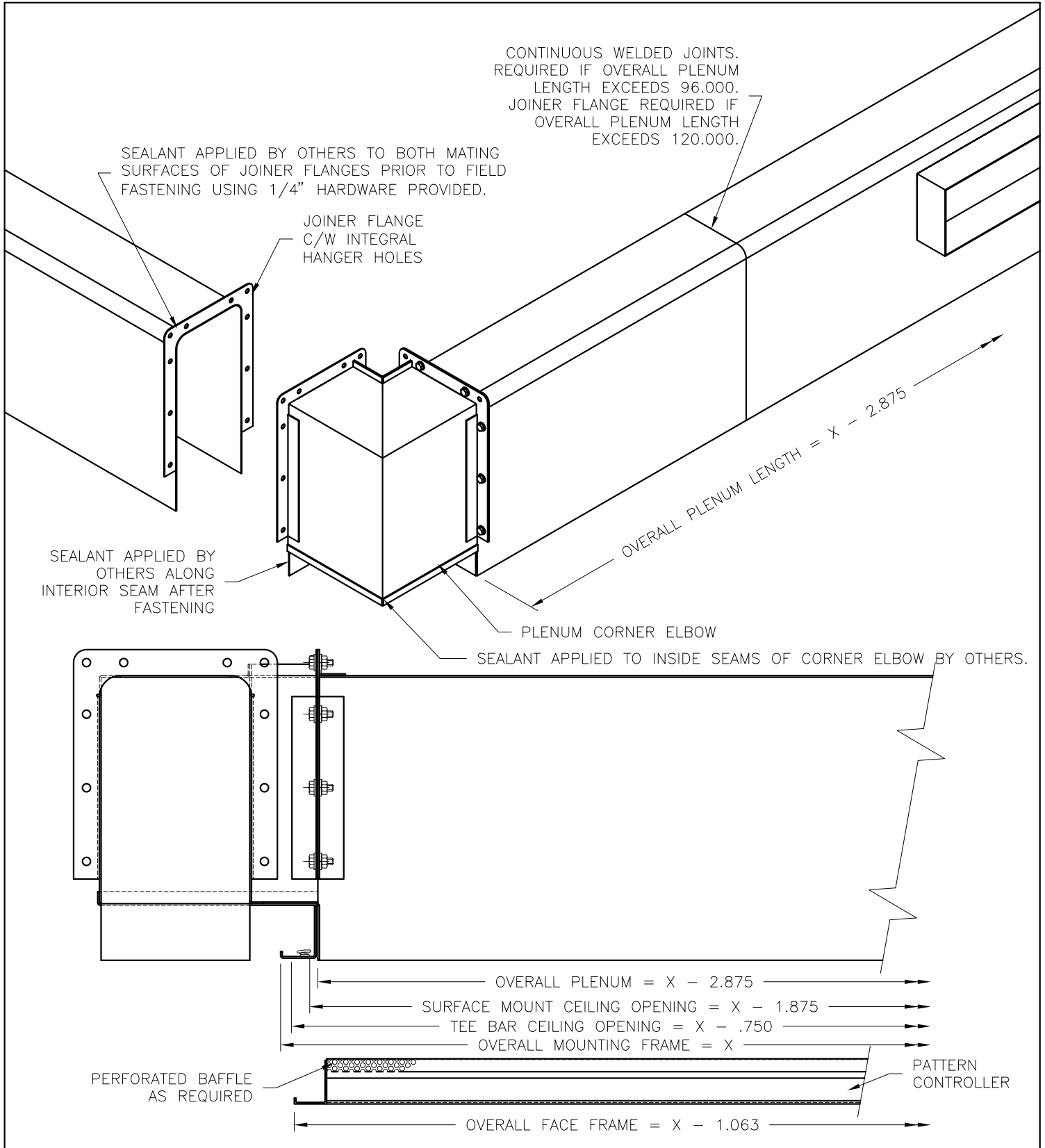
ALUMINUM
 HOSPITAL OPERATING
 ROOM DIFFUSER

SUBMITTAL DATE:

SPEC. SYMBOL:

2012/01/26

CONTINUOUS FEED PLENUM



PROJECT:

ENGINEER:

CUSTOMER:

SUBMITTAL DATE:

SPEC. SYMBOL:

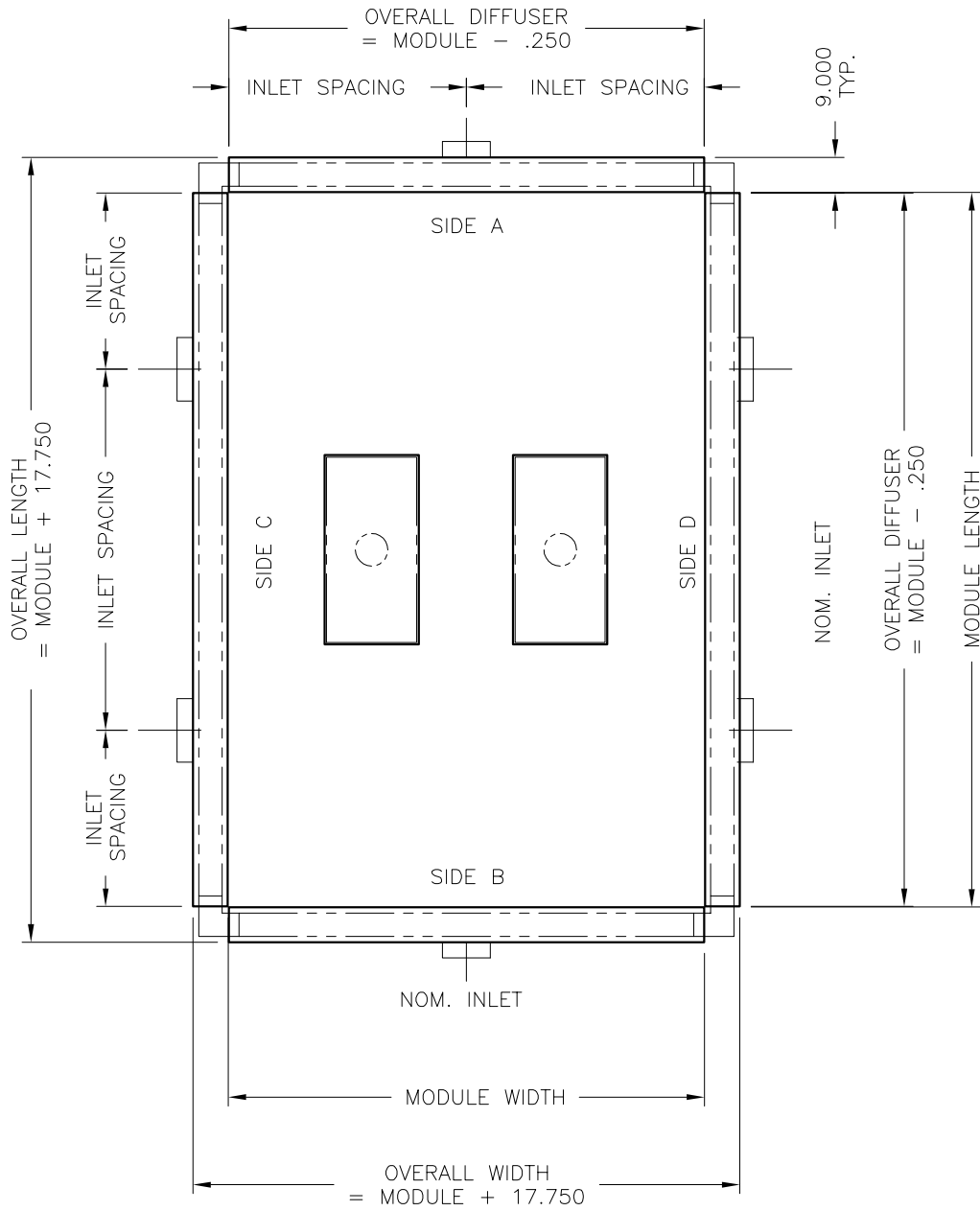
PRICE[®]

ES
NH

250571

2012/01/26

HORD/AL
ALUMINUM
HOSPITAL OPERATING
ROOM DIFFUSER
CONTINUOUS FEED PLENUM



OVERALL DIFFUSER FACE (LENGTH) = MODULE - 1.312
 OVERALL MOUNTING FRAME (LENGTH) = MODULE - .250

OVERALL DIFFUSER FACE (WIDTH) = MODULE - 1.312
 OVERALL MOUNTING FRAME (WIDTH) = MODULE - .250

PROJECT:



ENGINEER:

RB
NH

CUSTOMER:

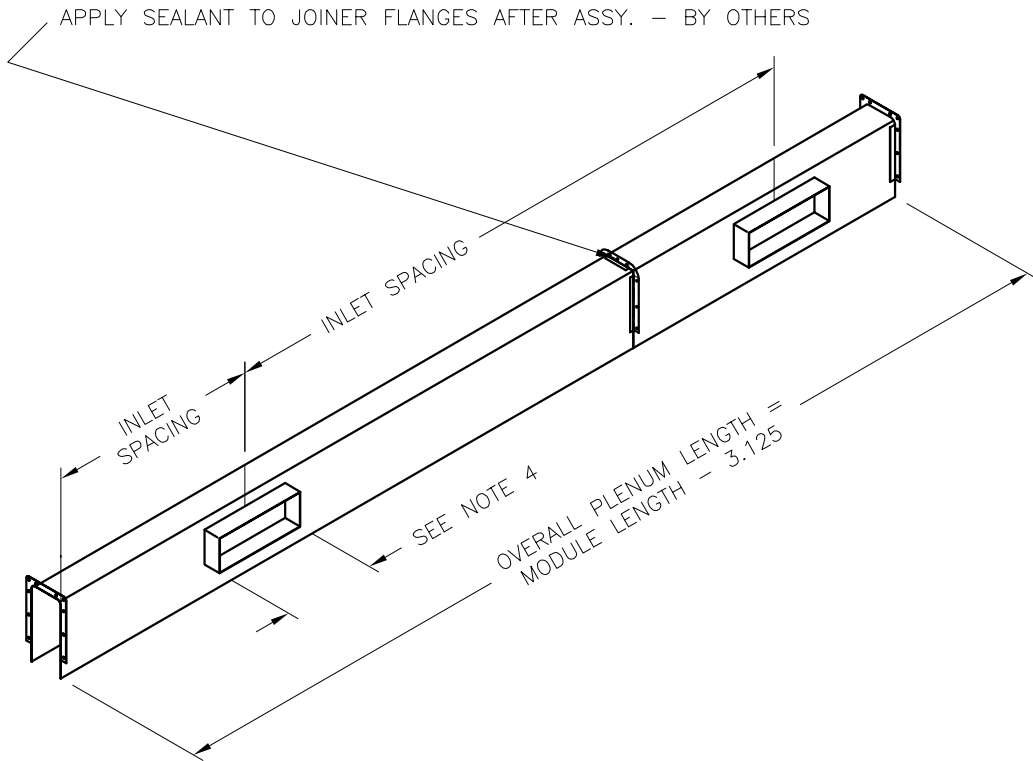
250571

SUBMITTAL DATE:

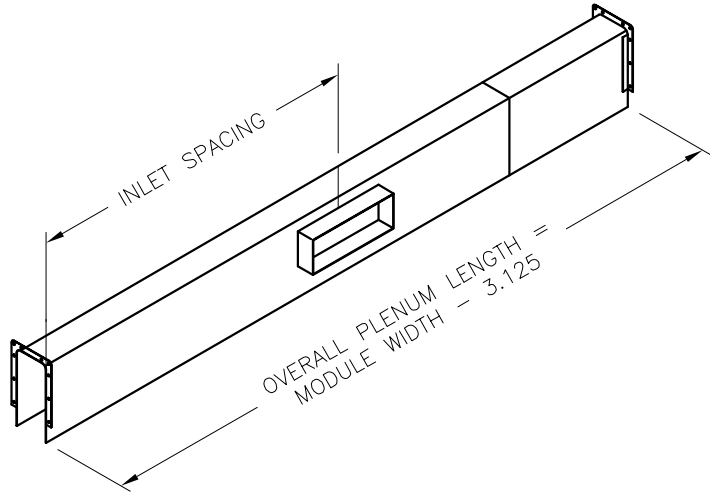
SPEC. SYMBOL:

2012/01/26

HORD/AL
 ALUMINUM
 HOSPITAL OPERATING
 ROOM DIFFUSER
 CONTINUOUS FEED PLENUM



SIDE C & D

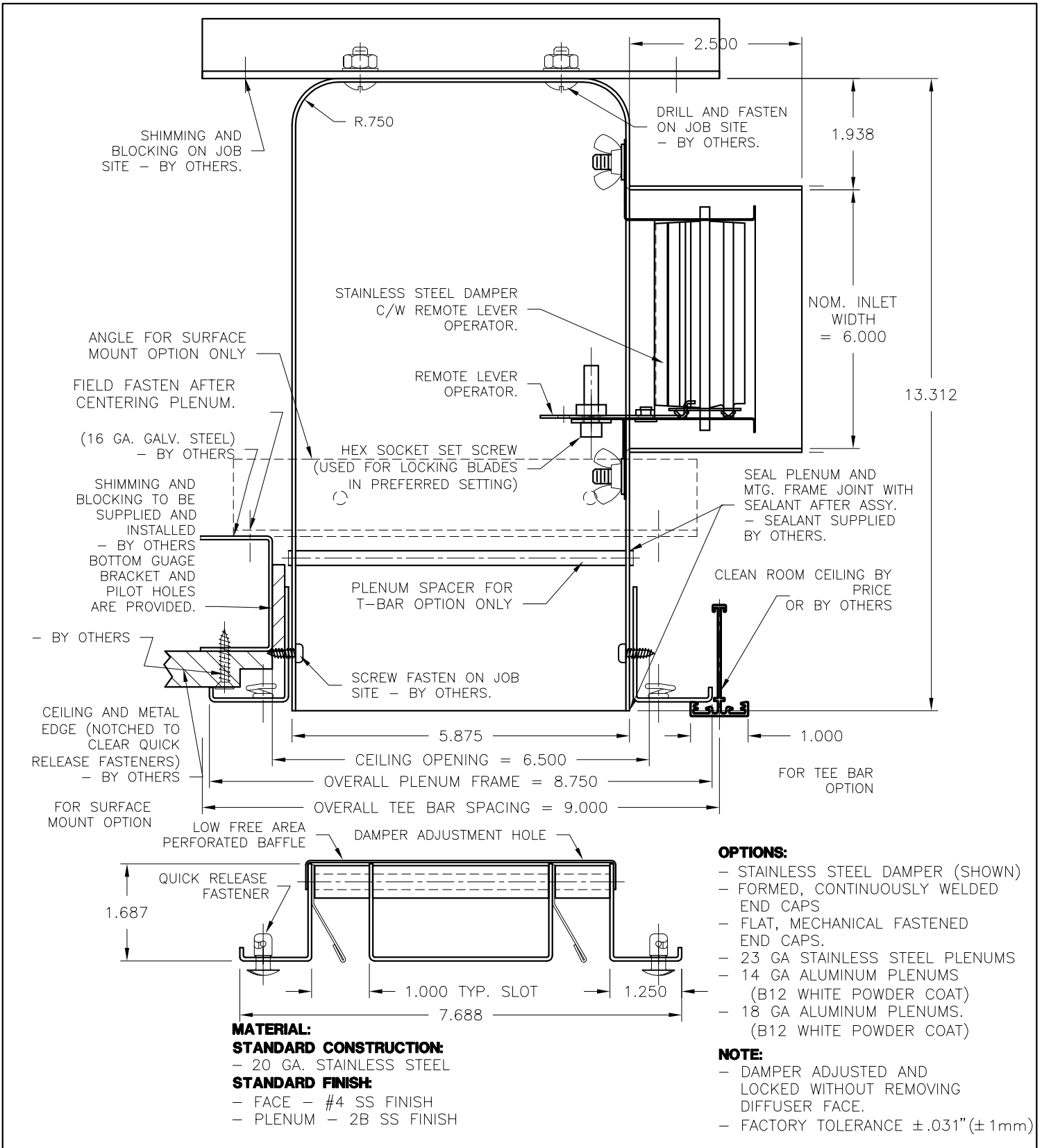


SIDE A & B

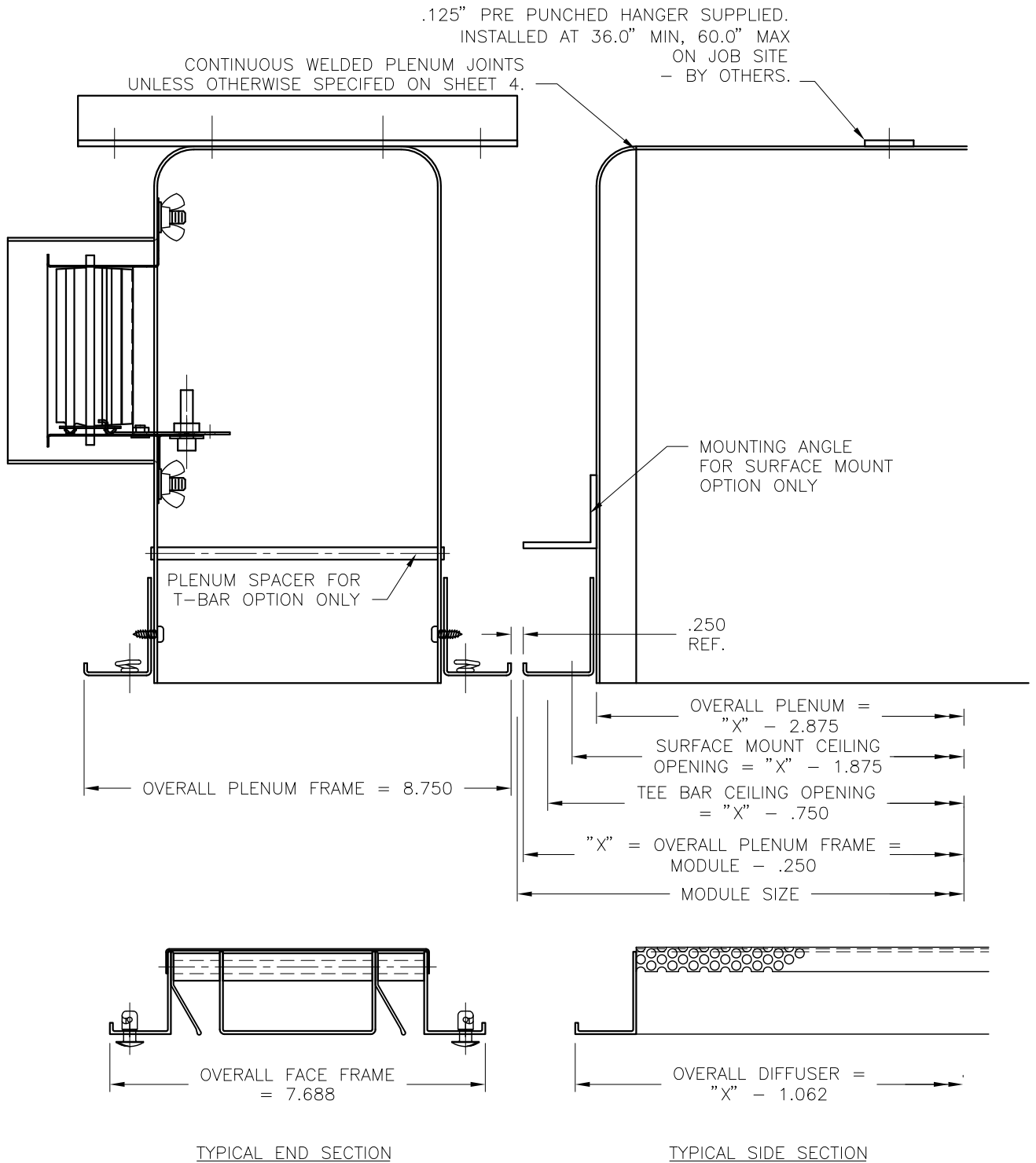
NOTES:

1. RECOMMENDED SLOT AIRFLOW IS 25-45 CFM/FT.
2. MAXIMUM INLET VELOCITY IS 500 FPM.
3. TYPICAL LAYOUT SHOWN, MINIMUM ONE INLET REQUIRED PER SYSTEM.
4. INLET SIZE LENGTH MINIMUM 6" & MAXIMUM 48".

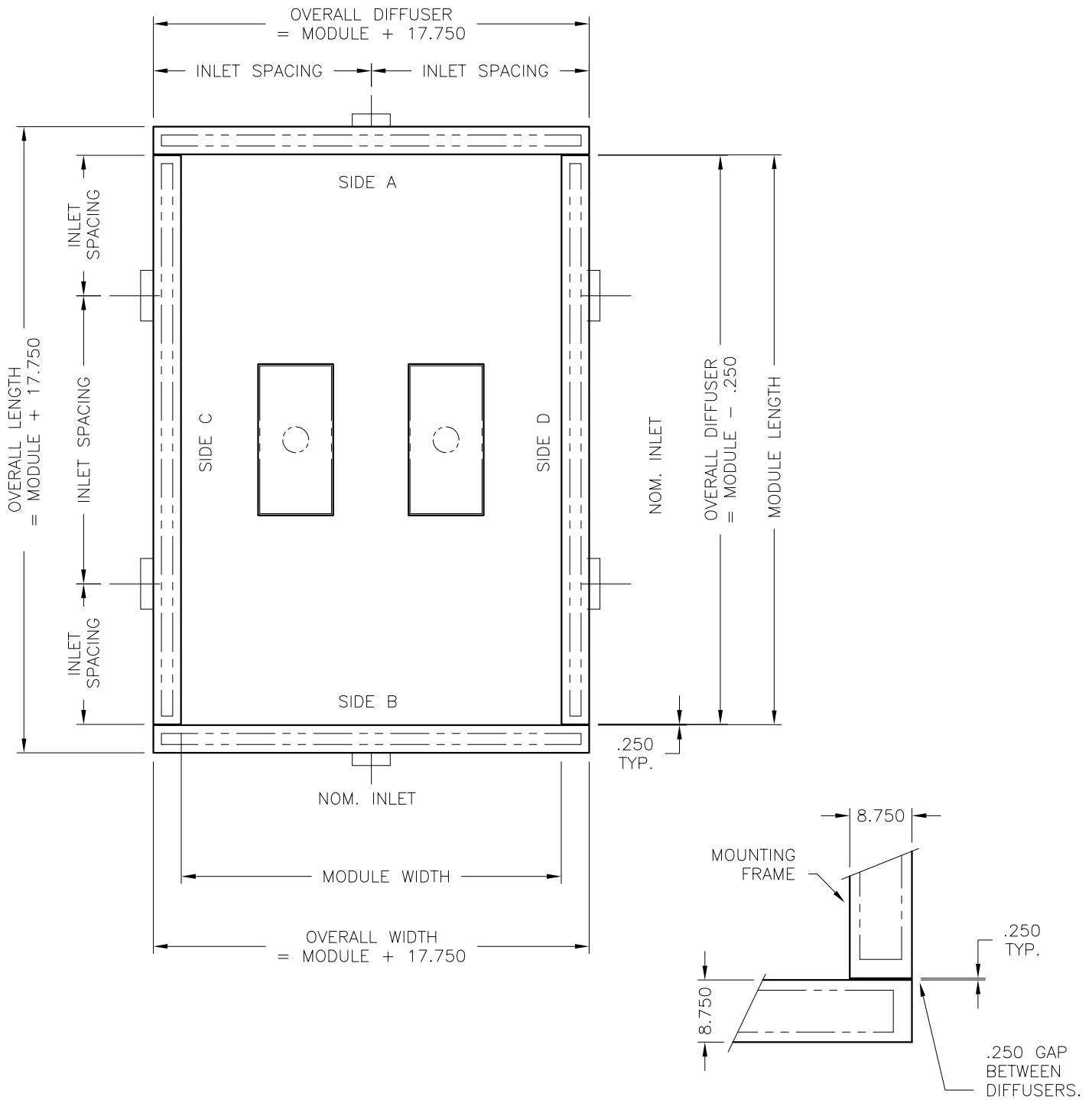
PROJECT:		PRICE [®]	
ENGINEER:			HORD/AL
CUSTOMER:			
SUBMITTAL DATE:	SPEC. SYMBOL:	2012/01/26	ALUMINUM HOSPITAL OPERATING ROOM DIFFUSER CONTINUOUS FEED PLENUM



PROJECT:		PRICE®	
ENGINEER:		HORD/SS	
CUSTOMER:		STAINLESS STEEL HOSPITAL OPERATING ROOM DIFFUSER	
SUBMITTAL DATE:	SPEC. SYMBOL:	251266	2012/01/26



PROJECT:		PRICE [®]	
ENGINEER:		<i>MSL</i>	HORD/SS STAINLESS STEEL HOSPITAL OPERATING ROOM DIFFUSER
CUSTOMER:			
SUBMITTAL DATE:	SPEC. SYMBOL:	2010/12/21	



OVERALL DIFFUSER FACE (LENGTH) = MODULE - 1.312
 OVERALL MOUNTING FRAME (LENGTH) = MODULE - .250

OVERALL DIFFUSER FACE (WIDTH) = MODULE + 16.687
 OVERALL MOUNTING FRAME (WIDTH) = MODULE + 17.750

PROJECT:

PRICE[®]

ENGINEER:

RB
NH

CUSTOMER:

251266

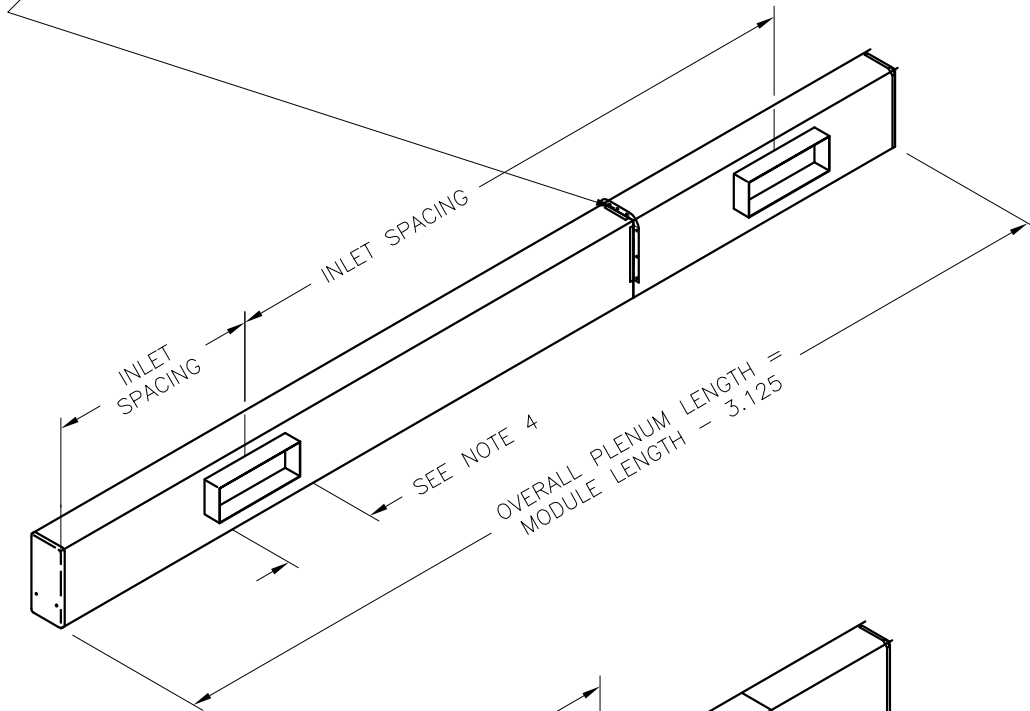
SUBMITTAL DATE:

SPEC. SYMBOL:

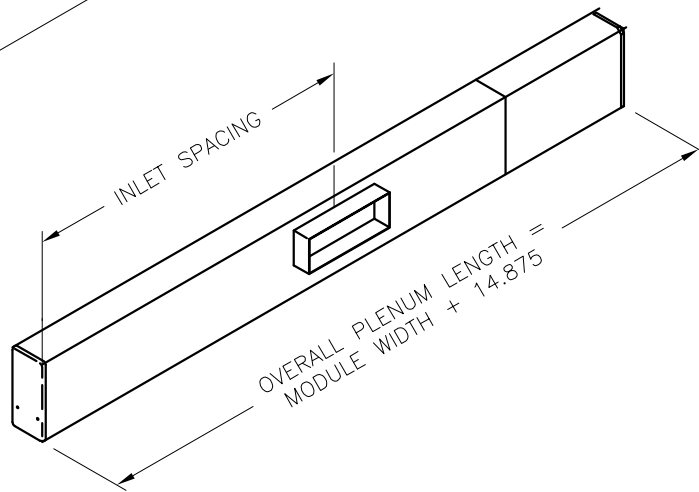
2012/01/26

HORD/SS
 STAINLESS STEEL
 HOSPITAL OPERATING
 ROOM DIFFUSER

APPLY SEALANT TO JOINER FLANGES WITH SILICONE AFTER ASSY. – BY OTHERS



SIDE C & D

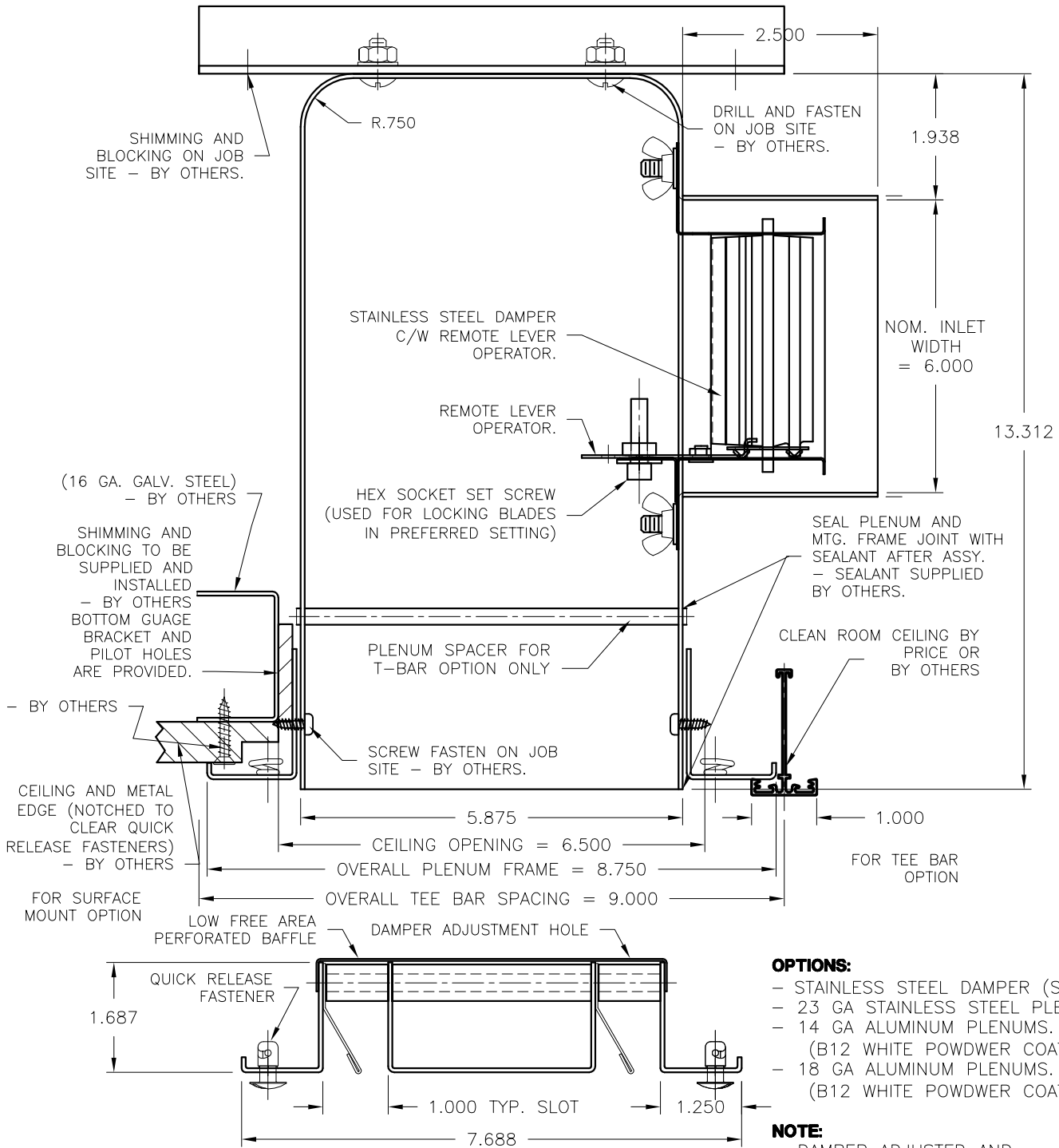


SIDE A & B

NOTES:

1. RECOMMENDED SLOT AIRFLOW IS 25–45 CFM/FT.
2. MAXIMUM INLET VELOCITY IS 500 FPM.
3. RECOMMENDED MINIMUM OF ONE INLET FOR EVERY 120" PLENUM LENGTH.
4. INLET SIZE LENGTH MINIMUM 6" & MAXIMUM 48".

PROJECT:		PRICE [®]	
ENGINEER:			HORD/SS
CUSTOMER:			
SUBMITTAL DATE:	SPEC. SYMBOL:	2012/01/26	

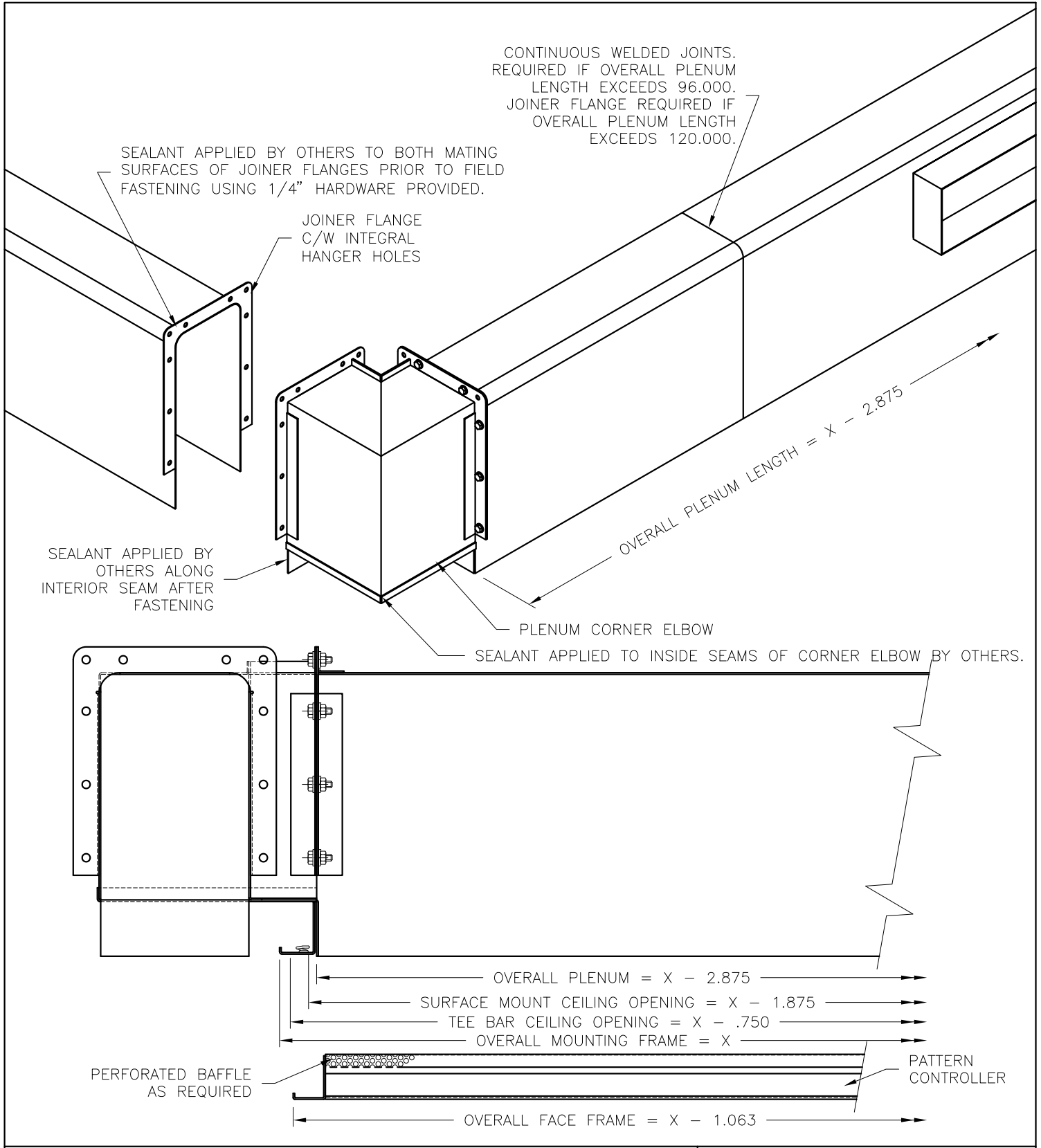


- OPTIONS:**
- STAINLESS STEEL DAMPER (SHOWN)
 - 23 GA STAINLESS STEEL PLENUMS
 - 14 GA ALUMINUM PLENUMS. (B12 WHITE POWDWER COAT)
 - 18 GA ALUMINUM PLENUMS. (B12 WHITE POWDWER COAT)

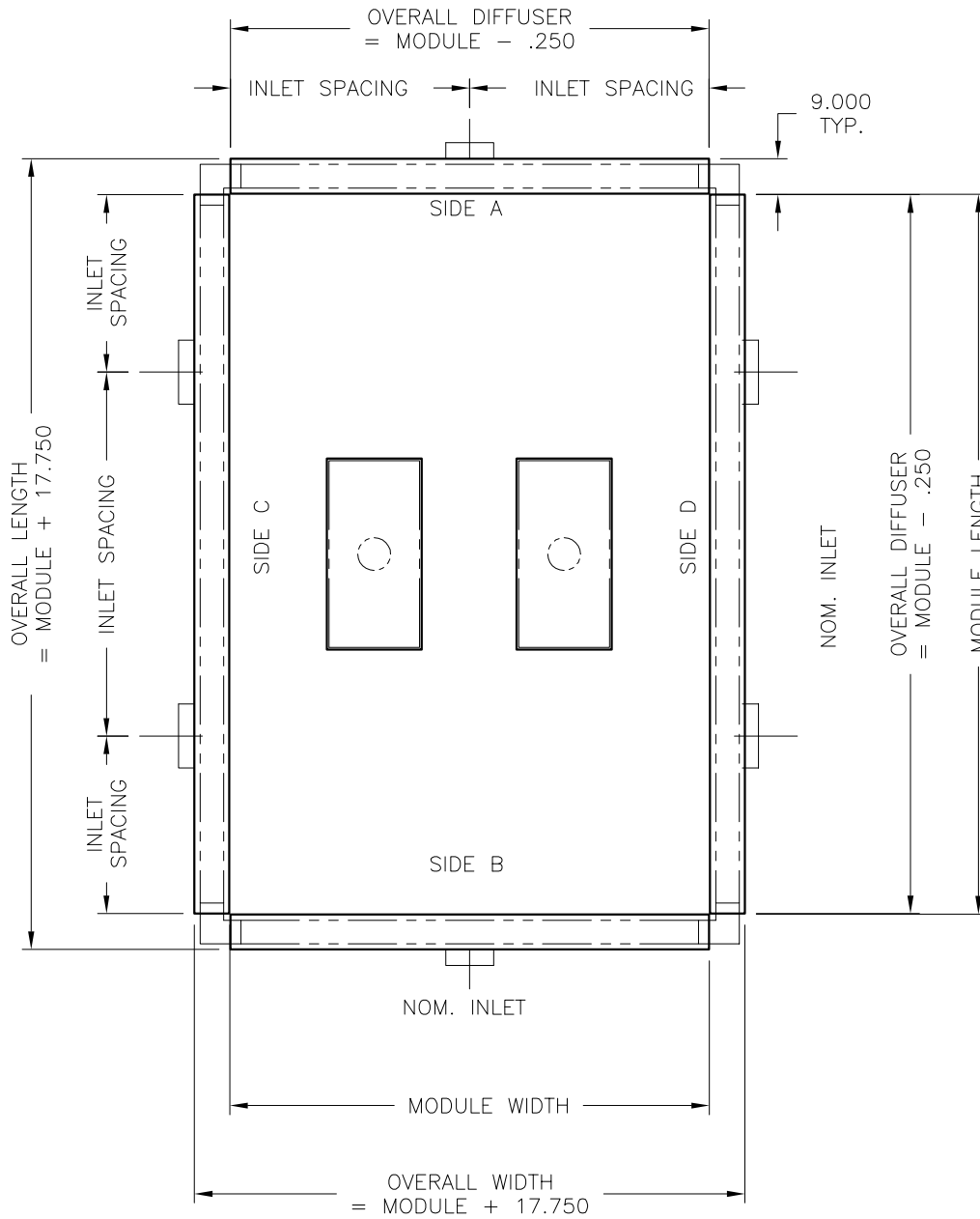
- NOTE:**
- DAMPER ADJUSTED AND LOCKED WITHOUT REMOVING DIFFUSER FACE.
 - FACTORY TOLERANCE $\pm .031"$ ($\pm 1\text{mm}$)

MATERIAL:
STANDARD CONSTRUCTION:
 - 20 GA. STAINLESS STEEL
STANDARD FINISH:
 - FACE - #4 SS FINISH
 - PLENUM - 2B SS FINISH

PROJECT:		PRICE [®]
ENGINEER:		
CUSTOMER:		251267
SUBMITTAL DATE:	SPEC. SYMBOL:	2012/01/26
		HORD/SS STAINLESS STEEL HOSPITAL OPERATING ROOM DIFFUSER CONTINUOUS FEED PLENUM



PROJECT:		PRICE [®]	
ENGINEER:			
CUSTOMER:		251267	HORD/SS STAINLESS STEEL HOSPITAL OPERATING ROOM DIFFUSER CONTINUOUS FEED PLENUM
SUBMITTAL DATE:	SPEC. SYMBOL:	2012/01/26	



OVERALL DIFFUSER FACE (LENGTH) = MODULE - 1.312
 OVERALL MOUNTING FRAME (LENGTH) = MODULE - .250

OVERALL DIFFUSER FACE (WIDTH) = MODULE - 1.312
 OVERALL MOUNTING FRAME (WIDTH) = MODULE - .250

PROJECT:



ENGINEER:

RB
NH

CUSTOMER:

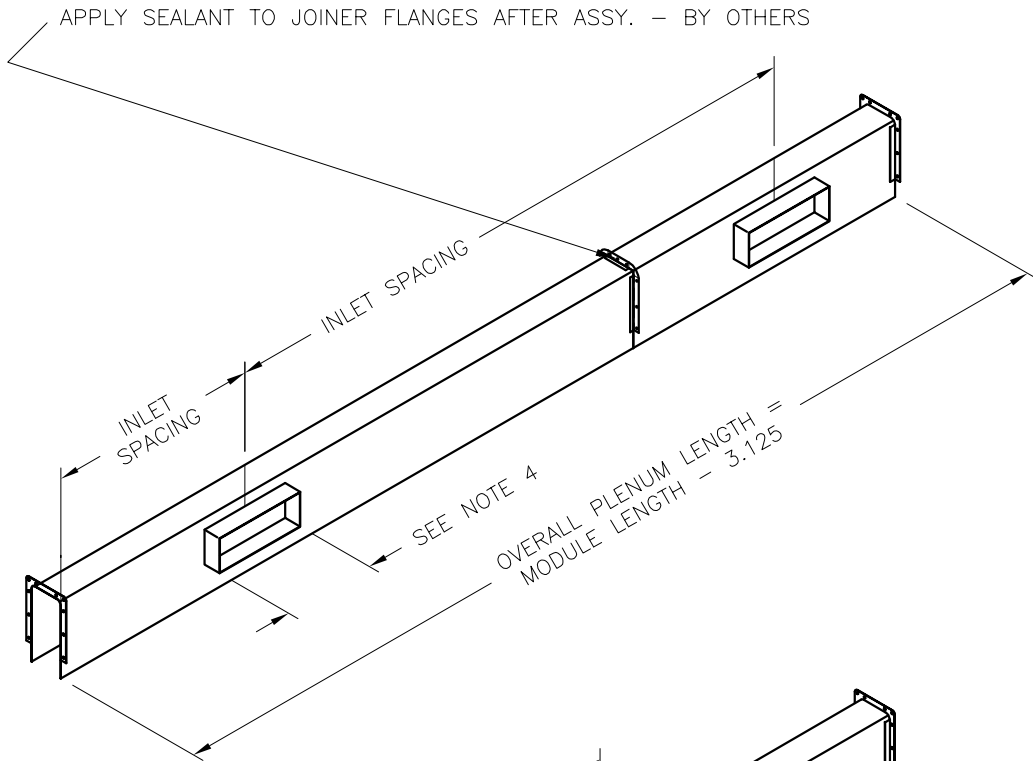
251267

SUBMITTAL DATE:

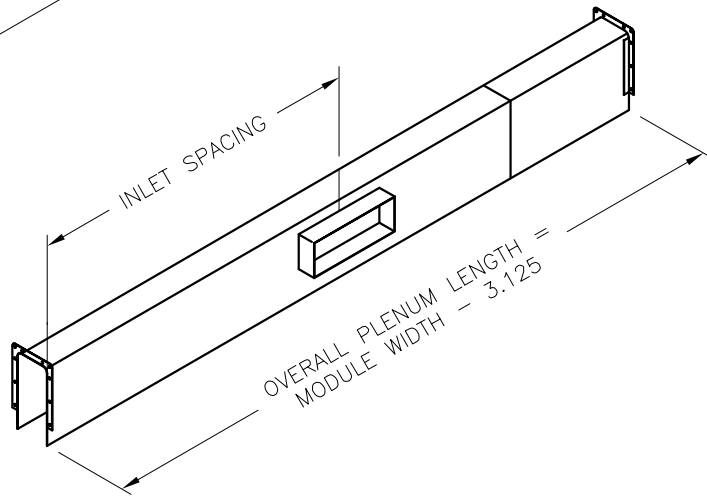
SPEC. SYMBOL:

2012/01/26

HORD/SS
 STAINLESS STEEL
 HOSPITAL OPERATING
 ROOM DIFFUSER
 CONTINUOUS FEED PLENUM



SIDE C & D



SIDE A & B

NOTES:

1. RECOMMENDED SLOT AIRFLOW IS 25-45 CFM/FT.
2. MAXIMUM INLET VELOCITY IS 500 FPM.
3. TYPICAL LAYOUT SHOWN, MINIMUM ONE INLET REQUIRED PER SYSTEM.
4. INLET SIZE LENGTH MINIMUM 6" & MAXIMUM 48".

PROJECT:



ENGINEER:

RE: NH

CUSTOMER:

251267

SUBMITTAL DATE:

SPEC. SYMBOL:

2012/01/26

HORD/SS
 STAINLESS STEEL
 HOSPITAL OPERATING
 ROOM DIFFUSER
 CONTINUOUS FEED PLENUM