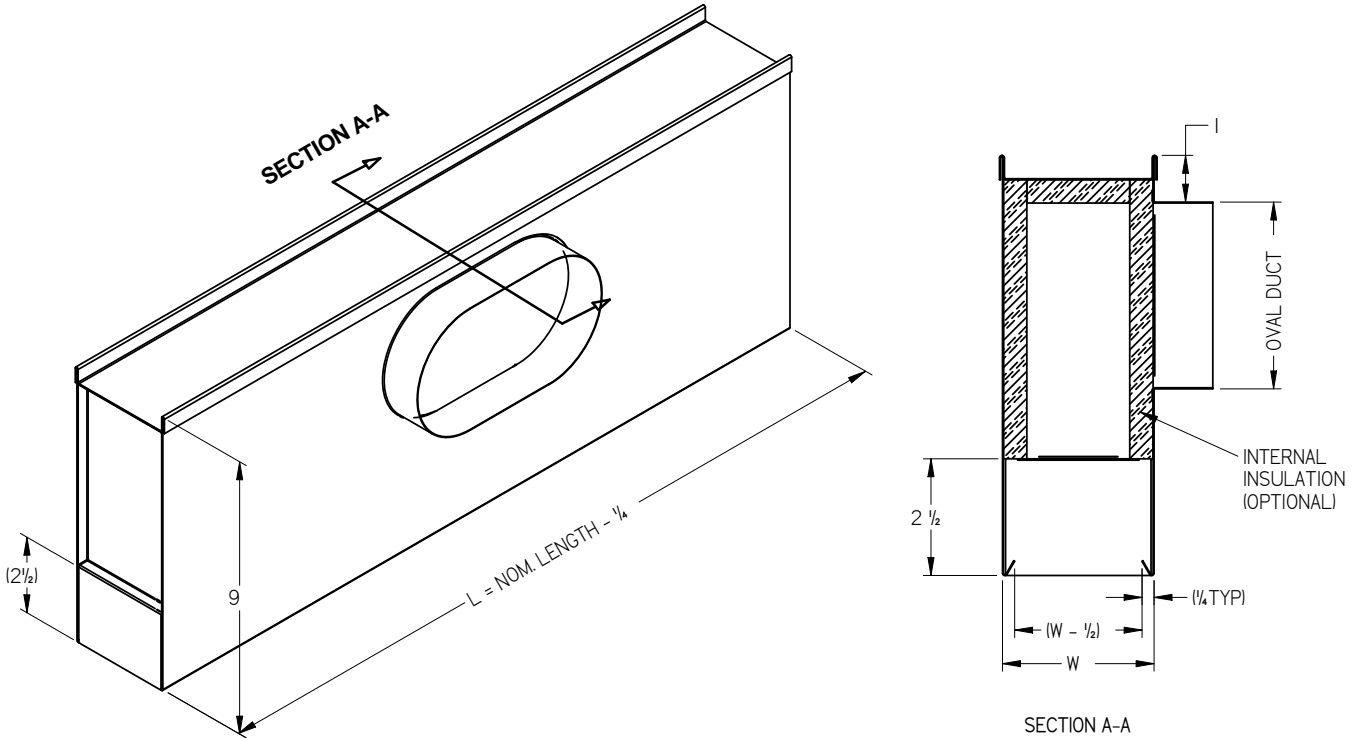


UNIVERSAL PLENUM LOW PROFILE



WIDTH:

SPECIFY PRICE DIFFUSER:

- SDS:
- CUSTOM FLOW: TYPE _____ BORDER TYPE _____ # OF SLOTS _____
- LBP: SPECIFY WIDTH _____

OR SPECIFY WIDTH: _____

LENGTH:

- 24 36 48 60 72 SPECIFY _____

INLET (OVAL):

- 5 (3X6)
- 6(4X7)
- 7(4X8.562)
- 8(4X10.125)
- 9(4X11.687)
- 10(4X13.250)
- 12(4X16.375)
- FC-FIELD CUT INLET

INSULATION

- CF (COATED FIBERGLASS)
- FF (FIBER FREE)

MATERIAL:

- COATED STEEL

NOTES:

- MAXIMUM PLENUM WIDTH IS 14"
- END CAPS ARE NOT INSULATED
- FIELD CUT INLET OPTION - UNIT SUPPLIED WITH NO INLET FOR FIELD CUTTING.

HEM OPTION:

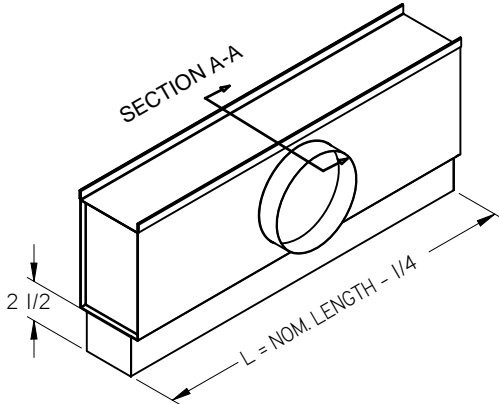
- HEMMED: (CONCEALED MOUNTING: LBP, CUSTOM FLOW TYPE 21SM, 22SM & 31SM, SDS TYPE 2, 8, 21 & 22). (SCREW MOUNTING: CUSTOM FLOW TYPE 22ASM, SDS TYPE 8A).
- NO HEM: (LBP, CUSTOM FLOW TYPE 21LI, SDS TYPE 1, 3, 6, 7, 9A, 9B, 12,14, 15, 17, 18, 19, 20 & 916).

ALL METRIC DIMENSIONS () ARE SOFT CONVERTED. IMPERIAL DIMENSIONS ARE CONVERTED TO METRIC AND ROUNDED TO THE NEAREST MILLIMETER.

PROJECT:		price	
ENGINEER:		R	UPL
CUSTOMER:		244076	UNIVERSAL PLENUM LOW PROFILE
SUBMITTAL DATE:	SPEC. SYMBOL:	2010.05.17	

UNIVERSAL PLENUM

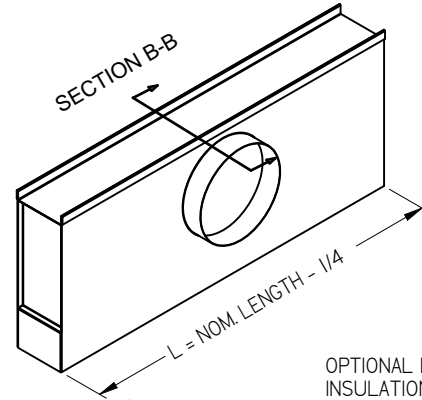
INTERNALLY INSULATED MODEL (FLAT EDGE)



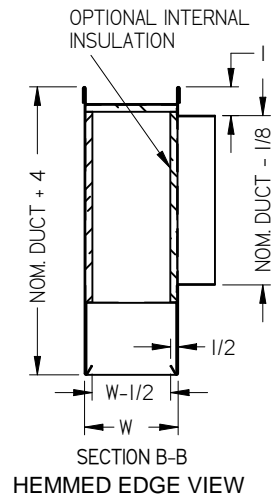
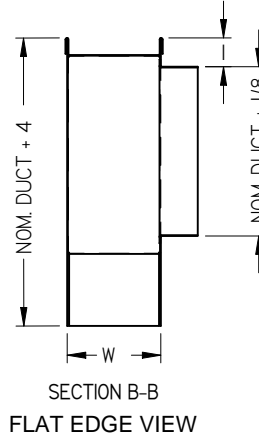
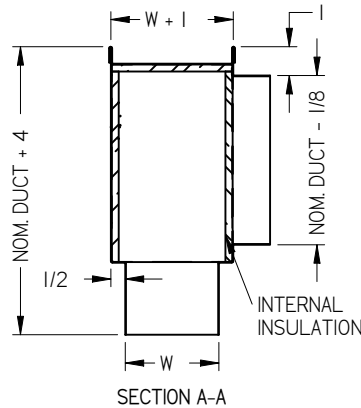
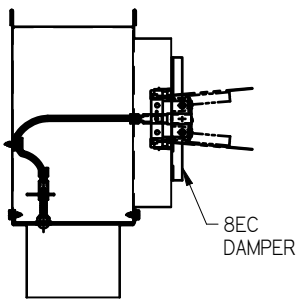
NON-INSULATED MODEL (HEMMED EDGE)

NON-INSULATED MODEL (FLAT EDGE)

INTERNALLY INSULATED MODEL (HEMMED EDGE)



8EC DAMPER OPTION



WIDTH:

SPECIFY PRICE DIFFUSER:

- SDS: TYPE _____ BORDER TYPE _____ # OF SLOTS _____
- CUSTOM FLOW: TYPE _____ BORDER TYPE _____ # OF SLOTS _____
- LBP: SPECIFY WIDTH _____

OR SPECIFY WIDTH: _____

LENGTH:

- 24 36 48 60 72 SPECIFY _____

INLET (ROUND):

- 6 7 8 9 10 12

HEM OPTION:

- HEMMED: (CONCEALED MOUNTING: LBP, CUSTOM FLOW TYPE 21SM, 22SM & 31SM, SDS TYPE 2, 8, 21 & 22). (SCREW MOUNTING: CUSTOM FLOW TYPE 22ASM, SDS TYPE 8A).
- NO HEM: (LBP, CUSTOM FLOW TYPE 21LI, SDS TYPE 1, 3, 6, 7, 9A, 9B, 12, 14, 15, 17, 18, 19, 20 & 916).

DAMPER OPTION

- 8EC CABLE OPERATED DAMPER (NOT AVAILABLE FOR 9" INLET) (NOT AVAILABLE FOR SDS 50 & SDS 75)

INSULATION

- CF (COATED FIBERGLASS)
- FF (FIBER FREE)



MATERIAL:

- COATED STEEL

NOTES:

- MAXIMUM PLENUM WIDTH IS 24".
- END CAPS ARE NOT INSULATED.

ALL METRIC DIMENSIONS () ARE SOFT CONVERTED. IMPERIAL DIMENSIONS ARE CONVERTED TO METRIC AND ROUNDED TO THE NEAREST MILLIMETER.

PROJECT:		
ENGINEER:		
CUSTOMER:		 244077
SUBMITTAL DATE:		APRIL 2010
SPEC. SYMBOL:		UP UNIVERSAL PLENUM