

CM = CEILING MODULE	SLOT QTY	S = SLOT WIDTH
□ 20 X 20 (508 X 508)	□ 1 SLOT	□ 1/2" (13) SDS450
	□ 2 SLOT	□ 3/4" (19) SDS475 □ 1" (25) SDS4100
□ 24 X 24 (610 X 610)	□ 1 SLOT	□ 1/2" (13) SDS450
	□ 2 SLOT	□ 3/4" (19) SDS475
	□ 3 SLOT	□ 1" (25) SDS4100
	□ 4 SLOT	
□ 30 X 30 (762 X 762)	□ 1 SLOT	□ 1/2" (13) SDS450
	□ 2 SLOT	□ 3/4" (19) SDS475
	□ 3 SLOT	□ 1" (25) SDS4100
	□ 4 SLOT	

SLOT QTY	CEILING TILE CUT SIZE
1 SLOT	SDS450 CM - 4 1/4" (108) SQ
	SDS475 CM - 4 3/4" (121) SQ
	SDS4100 CM - 5 1/4" (133) SQ
2 SLOT	SDS450 CM - 6 3/4" (171) SQ
	SDS475 CM - 7 3/4" (197) SQ
	SDS4100 CM - 8 3/4" (222) SQ
3 SLOT	SDS450 CM - 9 1/4" (235) SQ
	SDS475 CM - 10 3/4" (273) SQ
	SDS4100 CM - 12 1/4" (311) SQ
4 SLOT	SDS450 CM - 11 3/4" (298) SQ
	SDS475 CM - 13 3/4" (349) SQ
	SDS4100 CM - 15 3/4" (400) SQ

**NOTE:**

- FACTORY TOLERANCE: ± 1/32" (1)
- CEILING TILE IS SUPPLIED AND INSTALLED BY OTHERS. PLENUM IS REMOVED TO INSTALL TILE.
- INSULATED PLENUM MODEL SDSI4/14
- AVAILABLE INLET SIZES: 4, 5, 6, 7, 8, 10, 12, 14 (102, 127, 152, 178, 203, 254, 305, 356)

**MATERIAL:**

- PLENUM: STEEL CONSTRUCTION
- EXTRUDED ALUMINUM FRAME
- ALUMINUM PATTERN CONTROLLER SDS450
- STEEL PATTERN CONTROLLER SDS475 & 100

**OPTIONS:**

- NO PLENUM

**FINISH:**

- B12 WHITE (OPTIONAL FINISHES AVAILABLE)

ALL METRIC DIMENSIONS ( ) ARE SOFT CONVERTED. IMPERIAL DIMENSIONS ARE CONVERTED TO METRIC AND ROUNDED TO THE NEAREST MILLIMETER.

**PROJECT:**

**ENGINEER:**

**CUSTOMER:**

**SUBMITTAL DATE:**

**SPEC. SYMBOL:**

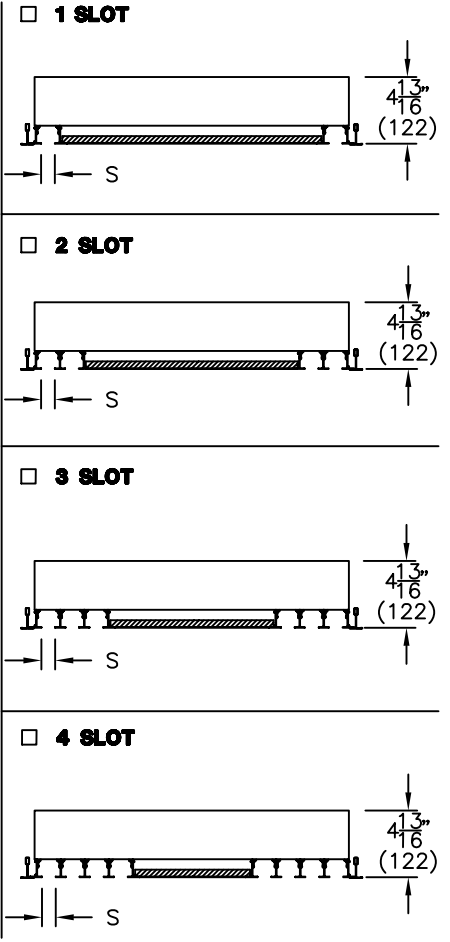
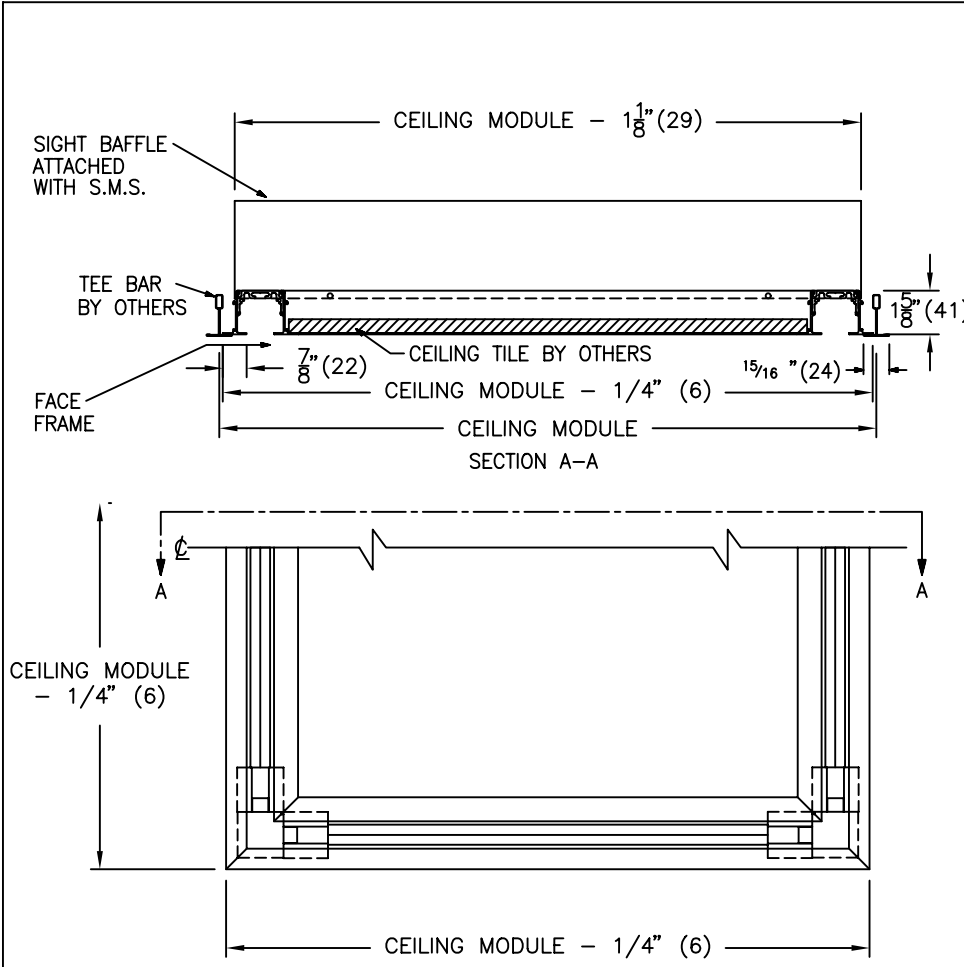
**PRICE®**

*RV*

**SDS4/14, SDSI4/14**  
4-WAY SUPPLY DIFFUSER  
FOR TYPE 14  
TEE BAR APPLICATION

219520

JULY 2004



CM = CEILING MODULE	SLOT QTY	S = SLOT WIDTH
□ 20 X 20 (508 X 508)	□ 1 SLOT	□ 1/2" (13) SDR450
	□ 2 SLOT	□ 3/4" (19) SDR475 □ 1" (25) SDR4100
□ 24 X 24 (610 X 610)	□ 1 SLOT	□ 1/2" (13) SDR450
	□ 2 SLOT	□ 3/4" (19) SDR475
	□ 3 SLOT	□ 1" (25) SDR4100
	□ 4 SLOT	
□ 30 X 30 (762 X 762)	□ 1 SLOT	□ 1/2" (13) SDR450
	□ 2 SLOT	□ 3/4" (19) SDR475
	□ 3 SLOT	□ 1" (25) SDR4100
	□ 4 SLOT	

SLOT QTY	CEILING TILE CUT SIZE
1 SLOT	SDR450 CM - 4 1/4" (108) SQ
	SDR475 CM - 4 3/4" (121) SQ
	SDR4100 CM - 5 1/4" (133) SQ
2 SLOT	SDR450 CM - 6 3/4" (171) SQ
	SDR475 CM - 7 3/4" (197) SQ
	SDR4100 CM - 8 3/4" (222) SQ
3 SLOT	SDR450 CM - 9 1/4" (235) SQ
	SDR475 CM - 10 3/4" (273) SQ
	SDR4100 CM - 12 1/4" (311) SQ
4 SLOT	SDR450 CM - 11 3/4" (298) SQ
	SDR475 CM - 13 3/4" (349) SQ
	SDR4100 CM - 15 3/4" (400) SQ

**NOTE:**

- FACTORY TOLERANCE: ± 1/32" (1)
- CEILING TILE IS SUPPLIED AND INSTALLED BY OTHERS.


**MATERIAL:**

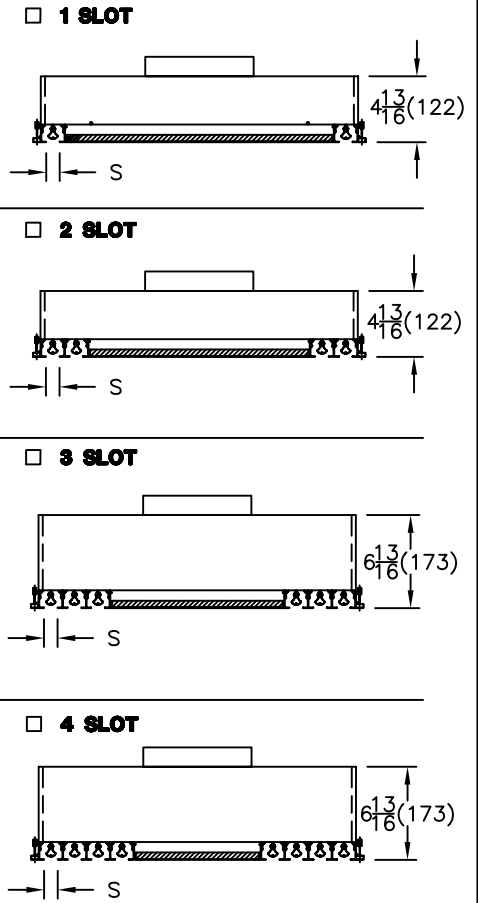
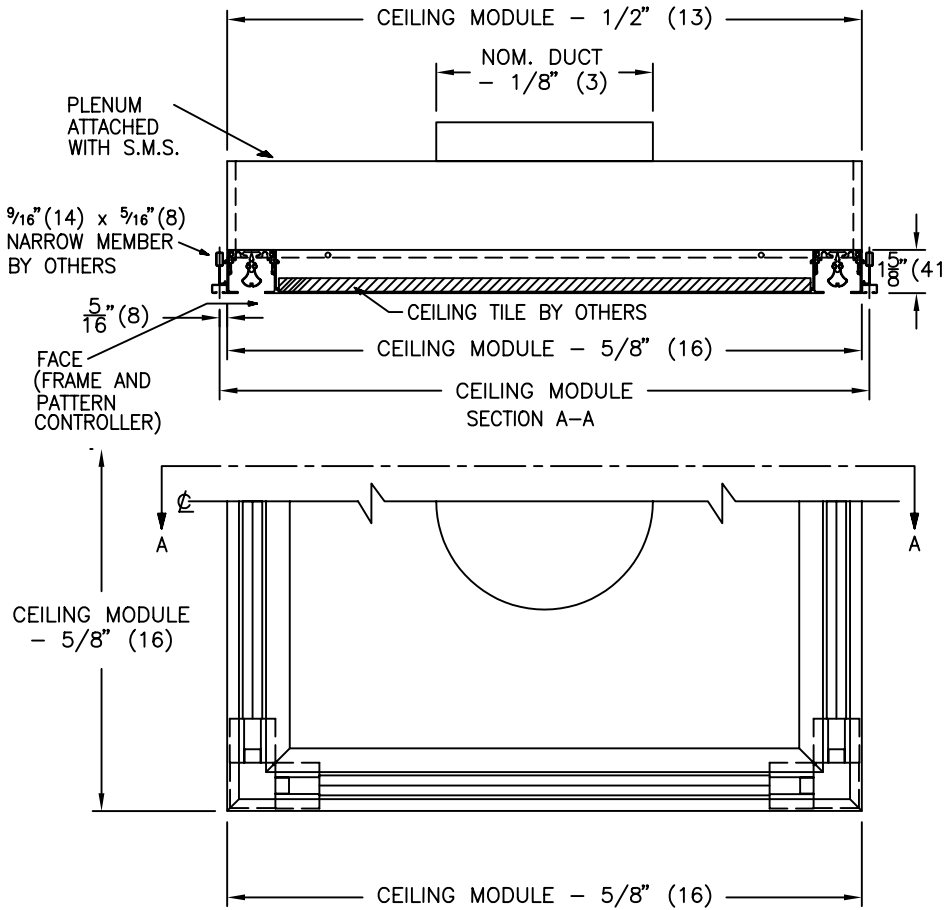
- SIGHT BAFFLE: STEEL CONSTRUCTION
- FACE: EXTRUDED ALUMINUM

**FINISH:**

- B12 WHITE (OPTIONAL FINISHES AVAILABLE)

ALL METRIC DIMENSIONS ( ) ARE SOFT CONVERTED. IMPERIAL DIMENSIONS ARE CONVERTED TO METRIC AND ROUNDED TO THE NEAREST MILLIMETER.

<b>PROJECT:</b>		<b>PRICE®</b>	
<b>ENGINEER:</b>		 219521	<b>SDR4/14</b> 4-WAY RETURN DIFFUSER FOR TYPE 14 TEE BAR APPLICATION
<b>CUSTOMER:</b>			
<b>SUBMITTAL DATE:</b>	<b>SPEC. SYMBOL:</b>	JULY 2004	



CM = CEILING MODULE	SLOT QTY	S = SLOT WIDTH
□ 20 X 20 (508 X 508)	□ 1 SLOT	□ 1/2" (13) SDS450
	□ 2 SLOT	□ 3/4" (19) SDS475 □ 1" (25) SDS4100
□ 24 X 24 (610 X 610)	□ 1 SLOT	□ 1/2" (13) SDS450
	□ 2 SLOT	□ 3/4" (19) SDS475
	□ 3 SLOT	□ 1" (25) SDS4100
	□ 4 SLOT	
□ 30 X 30 (762 X 762)	□ 1 SLOT	□ 1/2" (13) SDS450
	□ 2 SLOT	□ 3/4" (19) SDS475
	□ 3 SLOT	□ 1" (25) SDS4100
	□ 4 SLOT	

SLOT QTY	CEILING TILE CUT SIZE
1 SLOT	SDS450 CM - 3 1/2" (89) SQ
	SDS475 CM - 4" (102) SQ
	SDS4100 CM - 4 1/2" (114) SQ
2 SLOT	SDS450 CM - 6" (152) SQ
	SDS475 CM - 7" (178) SQ
	SDS4100 CM - 8" (203) SQ
3 SLOT	SDS450 CM - 8 1/2" (216) SQ
	SDS475 CM - 10" (254) SQ
	SDS4100 CM - 11 1/2" (292) SQ
4 SLOT	SDS450 CM - 11" (279) SQ
	SDS475 CM - 13" (330) SQ
	SDS4100 CM - 15" (381) SQ

**NOTE:**

- FACTORY TOLERANCE: ± 1/32" (1)
- CEILING TILE IS SUPPLIED AND INSTALLED BY OTHERS. PLENUM IS REMOVED TO INSTALL TILE.
- INSULATED PLENUM MODEL SDSI4/17
- AVAILABLE INLET SIZES: 4, 5, 6, 7, 8, 10, 12, 14 (102, 127, 152, 178, 203, 254, 305, 356)

**MATERIAL:**

- PLENUM: STEEL CONSTRUCTION
- EXTRUDED ALUMINUM FRAME
- ALUMINUM PATTERN CONTROLLER SDS450
- STEEL PATTERN CONTROLLER SDS475 & 100

**OPTIONS:**

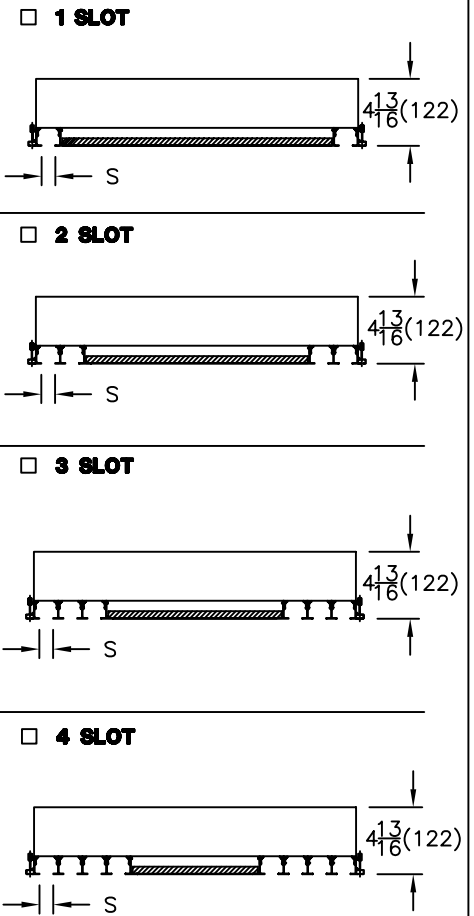
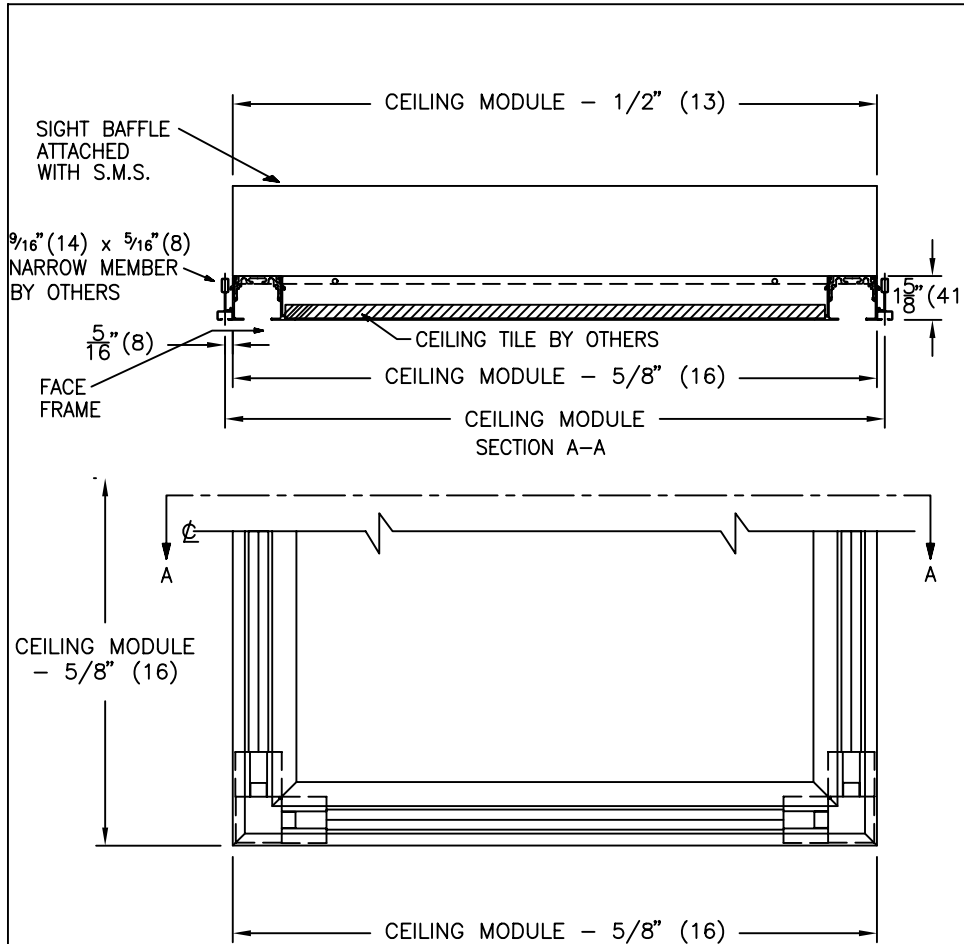
- NO PLENUM

**FINISH:**

- B12 WHITE (OPTIONAL FINISHES AVAILABLE)

ALL METRIC DIMENSIONS ( ) ARE SOFT CONVERTED. IMPERIAL DIMENSIONS ARE CONVERTED TO METRIC AND ROUNDED TO THE NEAREST MILLIMETER.

<b>PROJECT:</b>		<b>PRICE®</b>	
<b>ENGINEER:</b>			<b>SDS4/17, SDSI4/17</b> 4-WAY SUPPLY DIFFUSER FOR TYPE 17 NARROW MEMBER APPLICATION
<b>CUSTOMER:</b>			
<b>SUBMITTAL DATE:</b>	<b>SPEC. SYMBOL:</b>	JULY 2004	



CM = CEILING MODULE	SLOT QTY	S = SLOT WIDTH
□ 20 X 20 (508 X 508)	□ 1 SLOT	□ 1/2" (13) SDR450
	□ 2 SLOT	□ 3/4" (19) SDR475 □ 1" (25) SDR4100
□ 24 X 24 (610 X 610)	□ 1 SLOT	□ 1/2" (13) SDR450
	□ 2 SLOT	□ 3/4" (19) SDR475
	□ 3 SLOT	□ 1" (25) SDR4100
	□ 4 SLOT	
□ 30 X 30 (762 X 762)	□ 1 SLOT	□ 1/2" (13) SDR450
	□ 2 SLOT	□ 3/4" (19) SDR475
	□ 3 SLOT	□ 1" (25) SDR4100
	□ 4 SLOT	

SLOT QTY	CEILING TILE CUT SIZE
1 SLOT	SDR450 CM - 3 1/2" (89) SQ
	SDR475 CM - 4" (102) SQ
	SDR4100 CM - 4 1/2" (114) SQ
2 SLOT	SDR450 CM - 6" (152) SQ
	SDR475 CM - 7" (178) SQ
	SDR4100 CM - 8" (203) SQ
3 SLOT	SDR450 CM - 8 1/2" (216) SQ
	SDR475 CM - 10" (254) SQ
	SDR4100 CM - 11 1/2" (292) SQ
4 SLOT	SDR450 CM - 11" (279) SQ
	SDR475 CM - 13" (330) SQ
	SDR4100 CM - 15" (381) SQ

**NOTE:**

- FACTORY TOLERANCE: ± 1/32" (1)
- CEILING TILE IS SUPPLIED AND INSTALLED BY OTHERS.

**MATERIAL:**

- SIGHT BAFFLE: STEEL CONSTRUCTION
- FACE: EXTRUDED ALUMINUM

**FINISH:**

- B12 WHITE (OPTIONAL FINISHES AVAILABLE)

ALL METRIC DIMENSIONS ( ) ARE SOFT CONVERTED. IMPERIAL DIMENSIONS ARE CONVERTED TO METRIC AND ROUNDED TO THE NEAREST MILLIMETER.

<b>PROJECT:</b>		<b>PRICE®</b>	
<b>ENGINEER:</b>			<b>SDR4/17</b>
<b>CUSTOMER:</b>			219538
<b>SUBMITTAL DATE:</b>	<b>SPEC. SYMBOL:</b>	JULY 2004	