

# Linkersoft2 Quick Start Guide Version 1.00

1. Use the Linker2 to connect a USB port on your PC to a Price Controller, and then click the Linkersoft2 shortcut on your desktop or in your Start Menu to launch the software.



2. Once the software has loaded, you should see a screen similar to the one below.

**Navigation Toolbar**  
Used to move between the five main program modes.

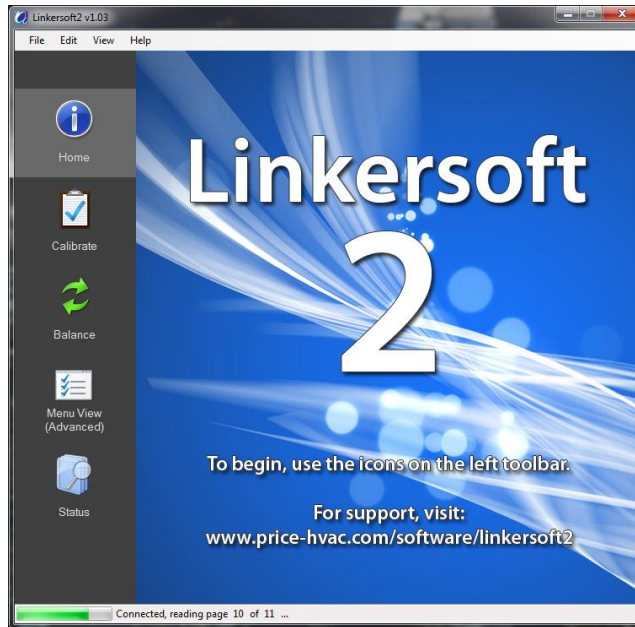


**Working Area**  
Displays information and controls based on the currently selected program mode.

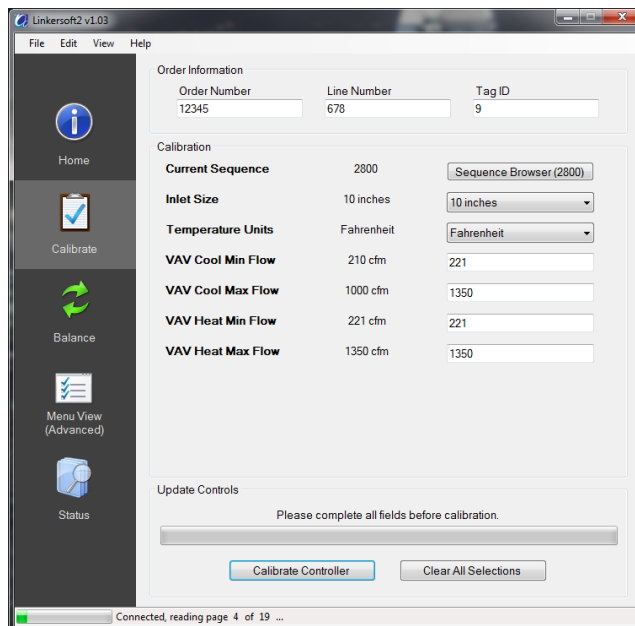
**Connection Status**  
Displays the current connection state. When connected, reads data pages continuously from the controller.

3. Use the navigation taskbar to move between the five main program modes:

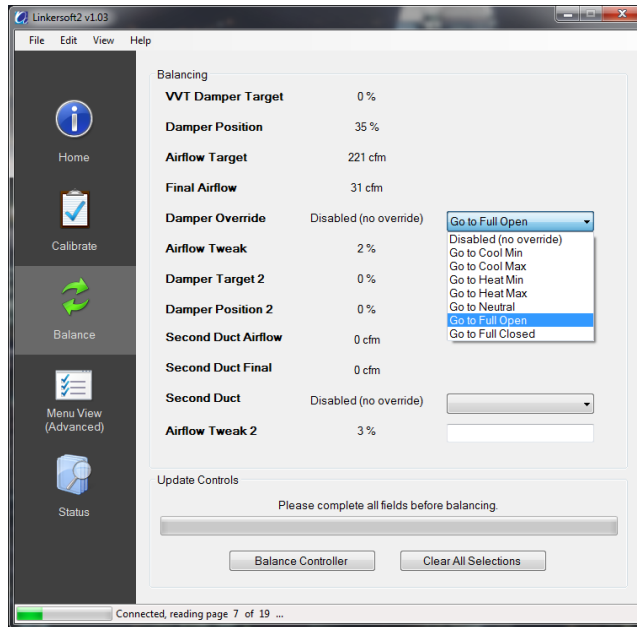
a. Home



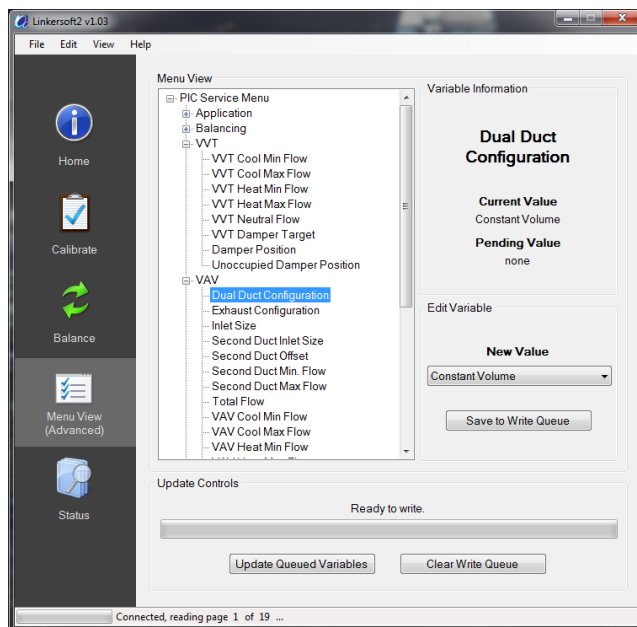
b. **Calibrate** - This mode is used for factory or field controller calibration. The sequence browser can be used to sequence program controllers that support this feature.



- c. **Balance** - This mode is used for field balancing. Options allow the user to adjust the damper position and tweak airflow.



- d. **Menu View (Advanced)** - This mode allows the user to adjust controller variables in a tree view that mirrors the menu system on the Price LCD Thermostat. Most safeties are disabled in this mode to allow for custom tweaks, so caution should be exercised when writing to a controller here.



- e. **Status** - This mode displays detailed information about the current connection, including the current controller model connected and its version. File locations utilized by Linkersoft2 can also be found here.

