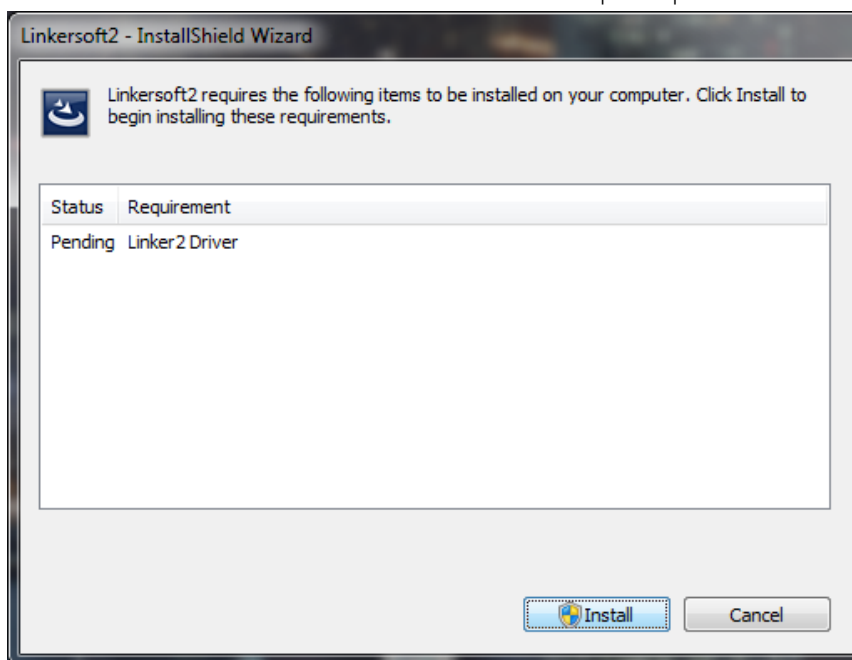
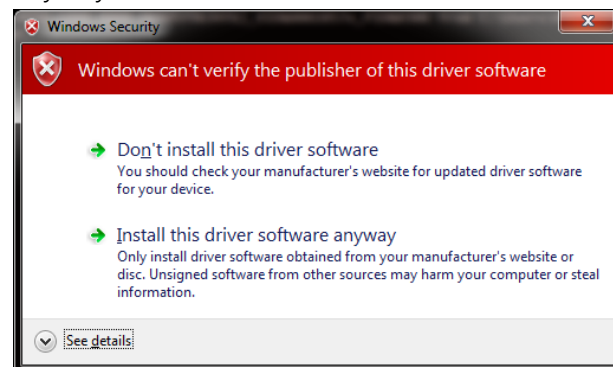
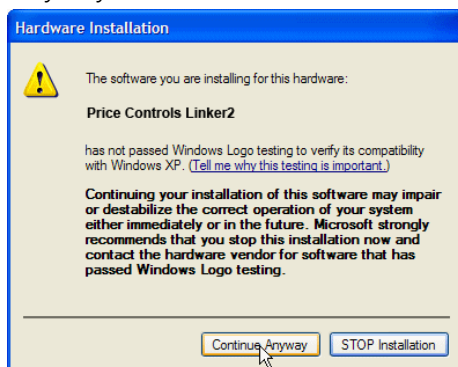


# Linkersoft2 Installation Guide Version 1.00

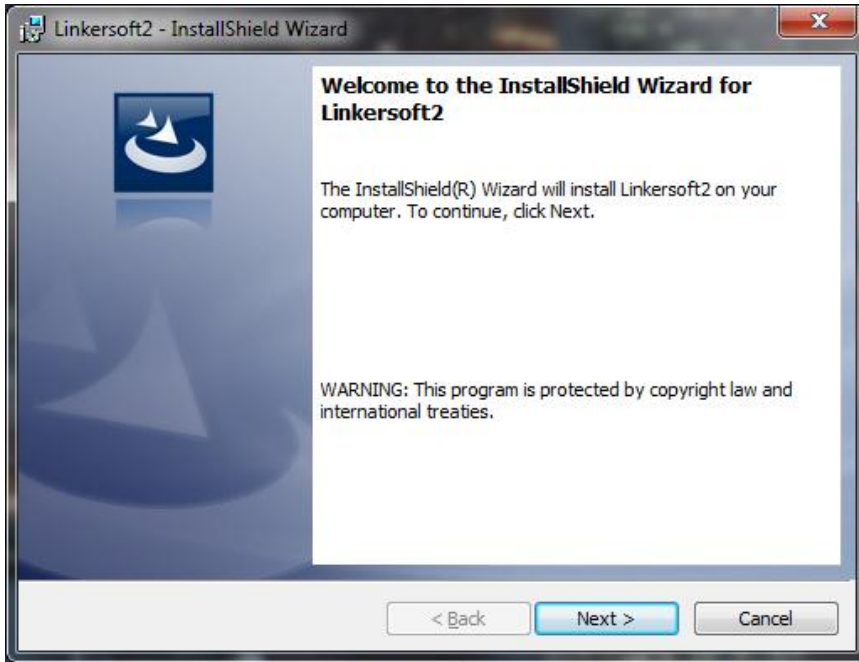
1. Do not connect the Linker2 to the USB port before the installation process.
2. Run linkersoft2\_1xx\_setup.exe found on the accompanying USB Flash Drive or downloaded from the Price website, where 1xx is the version number of Linkersoft2.
3. Before the installation begins, you may be required to install the current version of Microsoft .NET Framework. You will also be prompted to install the Linker2 driver.



4. You may be presented with an unsigned driver warning. Please select "Continue Anyway" or "Install this driver software anyway".



5. Follow the installation wizard.



6. After the installation completes, connect the Linker2 to your computer's USB port and use the Linkersoft2 shortcut on your desktop or in your Start Menu to launch the software.

