



PRICE[®]

**DLE-H with ELECTRIC HEAT
DISPLACEMENT VENTILATION
INSTALLATION MANUAL
II-00014**

Date: 03/12
Reference #: J-10r

www.price-hvac.com

Installation Instructions

ALWAYS READ & UNDERSTAND ALL INSTALLATION INSTRUCTIONS PRIOR TO STARTING.

FOR MOUNTING MULTIPLE UNITS WITH CONTINUOUS (LINEAR) APPEARANCE, SEE SHEET 2.

FASTENERS ARE NOT INCLUDED. SCREWS APPROPRIATE FOR FASTENING TO THE SPECIFIC WALL / FLOOR CONSTRUCTION SHOULD BE USED.

INSTALLATION - SINGLE UNIT:

1. SCREW BOTTOM REAR PLENUM (ITEM 1) TO FLOOR AND WALL.
2. PLACE BACK PLATE SUBASSEMBLY (ITEM 2) ON TOP OF REAR PLENUM AND SCREW TO WALL.
3. PLACE DIVIDER (ITEM 3) WITH INSULATION DOWN ON TOP OF BACK PLATE AS SHOWN, AND SCREW IN PLACE.
4. POWER AND CONTROL CABLING MAY BE ROUTED INTO THE ELECTRICAL ENCLOSURE FROM EITHER SIDE. CONNECT POWER AND CONTROL WIRES TO THE TERMINAL BLOCKS. ENSURE THE VOLTAGE IS AS SPECIFIED ON THE UNIT. SEE SHEETS 3 AND 4 FOR WIRING DIAGRAMS.
5. FIT FRONT PANEL ASSEMBLY (ITEM 4) TO BACK PANEL, WITH LIP OF FRONT PANEL BEHIND LIP ON BACK PLATE. SCREW FRONT PANEL TO BOTTOM REAR PLENUM.
6. FIT ENDCAP (ITEM 5) OR MULLION (ITEM 6) ONTO ENDS OF FRONT PANEL WHERE REQUIRED. DIFFUSER ENDS MUST BE ENCLOSED, EITHER BY A WALL OR ENDCAP. MULLIONS AND ENDCAPS MUST BE SCREWED IN PLACE.

ROUTE CONTROL WIRE THROUGH BUSHING ON EITHER SIDE

KNOCKOUTS FOR CONDUIT CONNECTION

TERMINAL BLOCKS FOR FIELD WIRED CONNECTIONS

IMPORTANT NOTE:
 EACH MASTER UNIT CAN POWER A MAXIMUM OF 2 UNITS AT 120V (1 DRONE PLUS 1 MASTER) OR 4 UNITS AT 208V / 240V (3 DRONES PLUS 1 MASTER).

MASTER UNIT WITH SCR OR RELAY

DRONE UNITS
 MAXIMUM 1 (120V)
 MAXIMUM 3 (208V / 240V)

2nd & 3rd DRONE
 N/A TO 120V

INPUT POWER

WIRING FROM MASTER UNIT OUTPUT TO DRONES



MEETS THE REQUIREMENTS OF
 UL1995 AND CSA C22.2 NO.236

Installation Instructions

ROUTE CONTROL WIRE THROUGH BUSHING ON EITHER SIDE

KNOCKOUTS FOR CONDUIT CONNECTION

TERMINAL BLOCKS FOR FIELD WIRED CONNECTIONS

ALWAYS READ & UNDERSTAND ALL INSTALLATION INSTRUCTIONS PRIOR TO STARTING.

FASTENERS ARE NOT INCLUDED. SCREWS APPROPRIATE FOR FASTENING TO THE SPECIFIC WALL / FLOOR CONSTRUCTION SHOULD BE USED.

INSTALLATION - MULTIPLE UNITS:

1. SCREW BOTTOM REAR PLENUMS (ITEM 1) TO FLOOR AND WALL, LEAVING 3/4" (19mm) BETWEEN SECTIONS.
2. PLACE BACK PLATE SUBASSEMBLIES (ITEM 2) ON TOP OF REAR PLENUMS AND SCREW TO WALL.
3. PLACE DIVIDERS (ITEM 3) WITH INSULATION DOWN ON TOP OF BACK PLATES AS SHOWN, AND SCREW IN PLACE.
4. POWER AND CONTROL CABLING MAY BE ROUTED INTO THE ELECTRICAL ENCLOSURE FROM EITHER SIDE. CONNECT POWER AND CONTROL WIRES TO THE TERMINAL BLOCKS. ENSURE THE VOLTAGE IS AS SPECIFIED ON THE UNIT. SEE SHEETS 3 AND 4 FOR WIRING DIAGRAMS. A MAXIMUM OF 1 DRONE (120V) OR 3 DRONES (240V) MAY BE POWERED THROUGH A SINGLE MASTER UNIT WITH SCR OR MAGNETIC RELAY.
5. FIT FRONT PANEL ASSEMBLIES (ITEM 4) TO BACK PANELS, STARTING AT ONE END. USE MULLIONS (ITEM 6) BETWEEN SECTIONS, WITH LIP OF FRONT PANEL BEHIND LIP ON BACK PLATE. SCREW FRONT PANEL TO BOTTOM REAR PLENUM AFTER SECTIONS HAVE BEEN FITTED IN THEIR FINAL LOCATION.
6. FIT ENDCAP (ITEM 5) OR MULLION (ITEM 6) ONTO ENDS OF FRONT PANEL WHERE REQUIRED. DIFFUSER ENDS MUST BE ENCLOSED, EITHER BY A WALL, ENDCAP OR ADDITIONAL SECTIONS OF DIFFUSER. MULLIONS AND ENDCAPS MUST BE SCREWED IN PLACE.

IMPORTANT NOTE:
 EACH MASTER UNIT CAN POWER A MAXIMUM OF 2 UNITS AT 120V (1 DRONE PLUS 1 MASTER) OR 4 UNITS AT 208V / 240V (3 DRONES PLUS 1 MASTER).

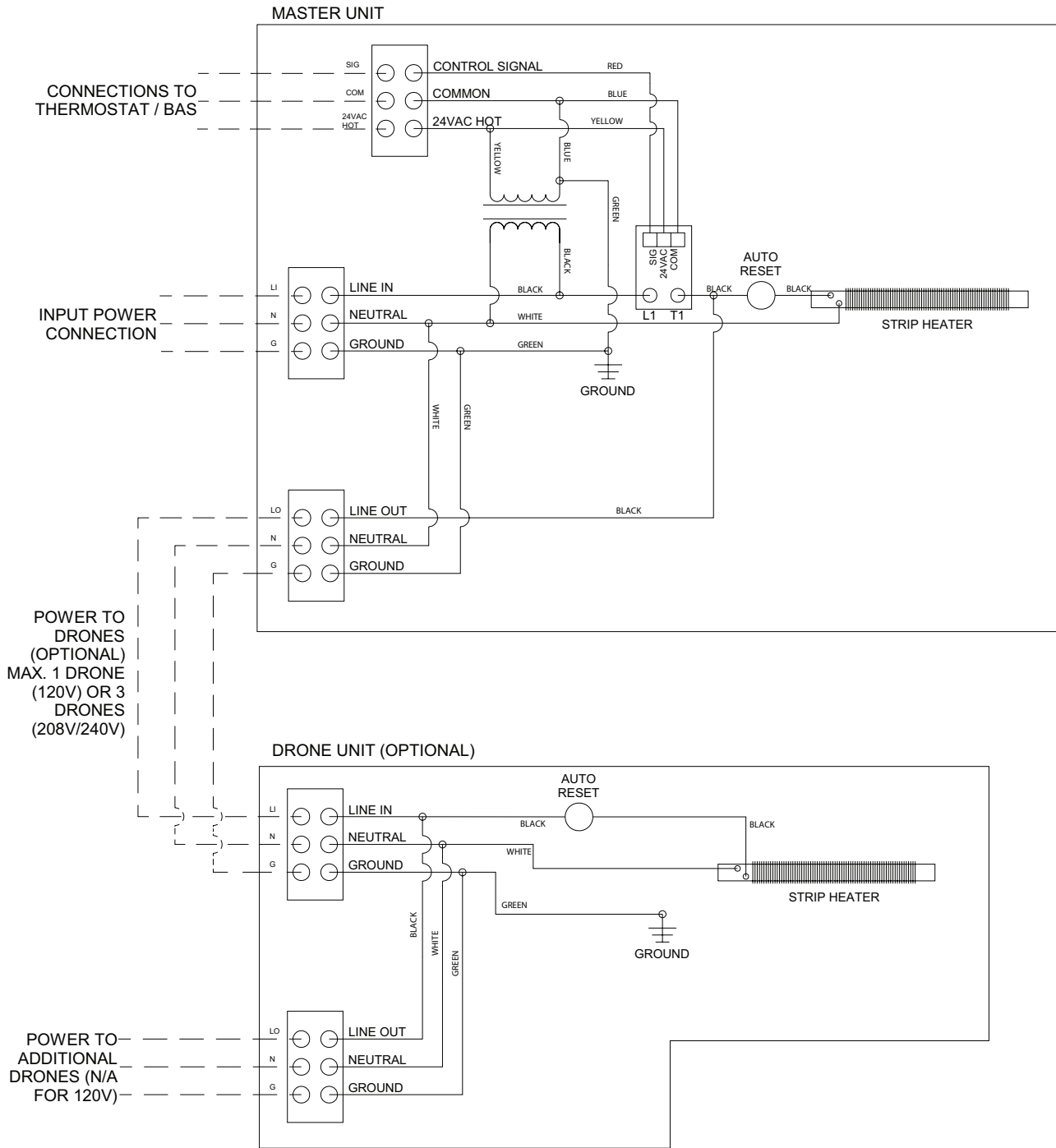
MEETS THE REQUIREMENTS OF
 UL1995 AND CSA C22.2 NO.236

Installation Instructions

WIRING DIAGRAM - SCR

(SEE SHEET 4 FOR WIRING DIAGRAM OF UNITS EQUIPPED WITH MAGNETIC RELAY).

--- DASHED LINES INDICATE FIELD WIRING

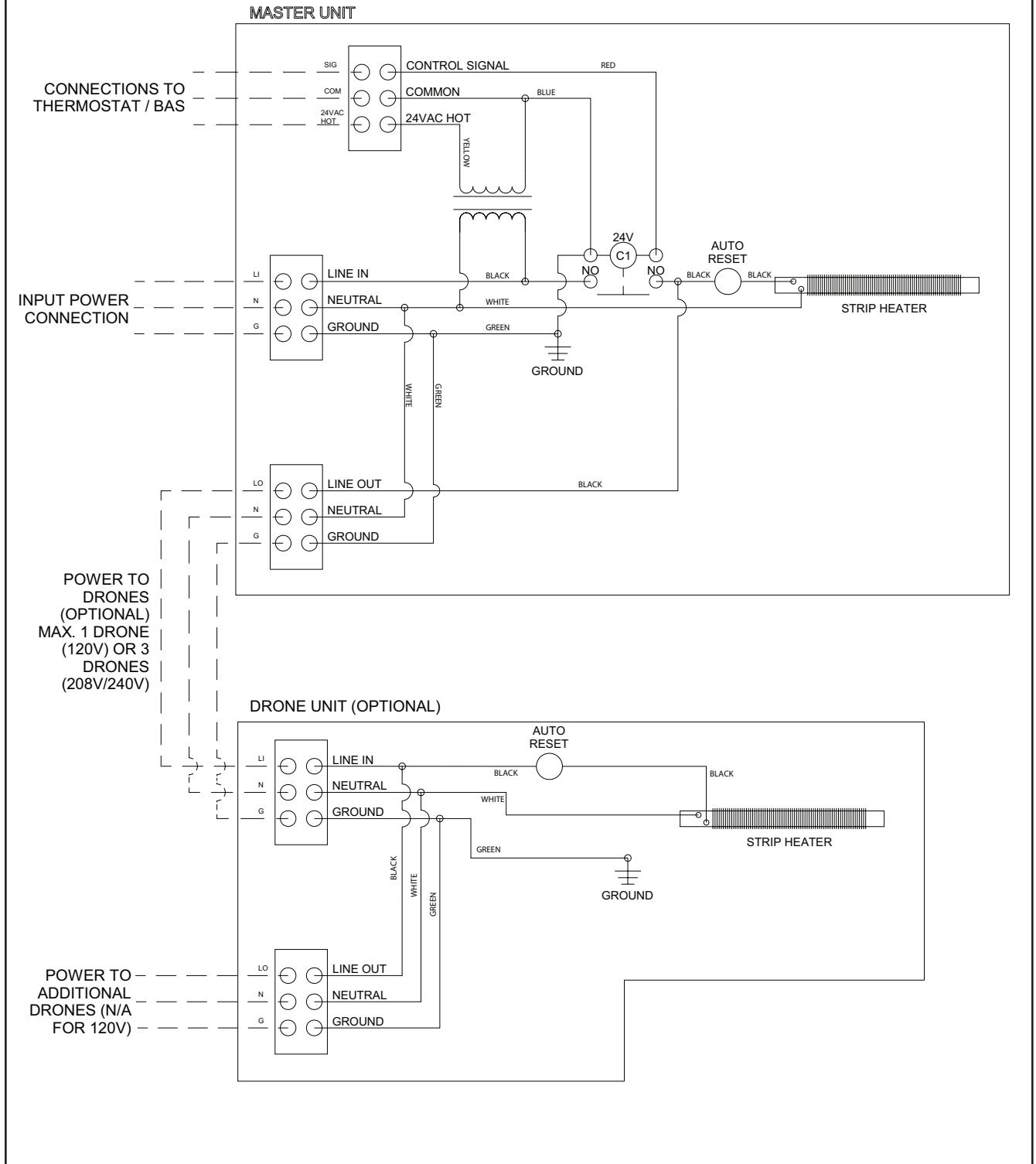


Installation Instructions

WIRING DIAGRAM - MAGNETIC RELAY

(SEE SHEET 3 FOR WIRING DIAGRAM OF UNITS EQUIPPED WITH SCR).

--- DASHED LINES INDICATE FIELD WIRING





PRICE
INDUSTRIES

2975 Shawnee Ridge Court
Suwanee, Georgia USA 30024
Ph: 770.623.8050 Fax: 770.623.6404



PRICE
INDUSTRIES

1290 Barrow Industrial Pkwy
Winder, Georgia USA 30680-5704



PRICE
INDUSTRIES

999 North Thornton Road
Casa Grande, Arizona USA 85222-3809



e.h. price
LIMITED

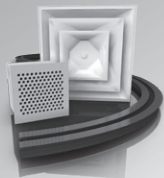
638 Raleigh Street
Winnipeg, Manitoba Canada R2K 3Z9
Ph: 204.669.4220 Fax: 204.663.2715

The founding principles of our company have never changed - business integrity, first class service and a commitment to people. Price manufacturing endeavors arose from our belief that we could supply superior products and services at a reasonable price. Our mission is to become the world-wide supplier of preference for air distribution products and services. You can rely on Price – our products and services – with confidence.

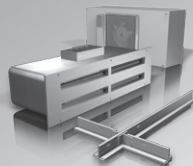
Warranty: The Company warrants and guarantees that all goods within this catalog that have been manufactured by the Company have been manufactured in accordance with the specifications published herein and will be free from defects in material and workmanship for a period of twelve (12) months from the date of Bill of Lading issued by the Company. The Company will replace defective product at its option, but will not be responsible for labor or material charges in replacing product or consequential damages. Any installation not conforming with the Company's specifications, manuals, bulletins or instructions or any misuse or any modification not authorized by the Company voids this warranty. This warranty is in lieu of all Provincial, State, and Federal statutory warranties and the conditions herein are in substitution and replacement of such warranties, statutory or otherwise.

Your Local Price Representative:

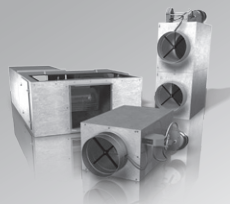
Grilles & Diffusers



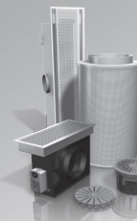
Critical Environments



Terminals



Sustainable Building



Noise Control

