



Critical Environments

**PRICE**®

[www.price-hvac.com](http://www.price-hvac.com)



## Price Critical Environments

Price's Critical Environment system solutions are designed to meet the highest and most current standards of performance, adaptability and energy efficiency.

Poor indoor air quality in a critical environment can compromise both the health of the people and the validity of the processes in that space. The choice of air distribution strategy throughout critical environments has a direct and significant impact on performance, energy usage and the ongoing maintenance of the facility and must be selected with these factors in mind. These environments are also subject to ongoing upgrades in standards, evolutions in technology, and changes to methodology, and as such must be flexible without compromising performance.



## The Price Cleanroom

All Price products with high-efficiency filters are assembled and PAO tested inside the Price Cleanroom.

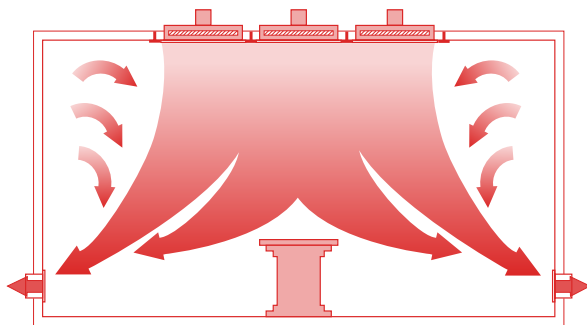
With room access restricted to only certified cleanroom technicians and nearly 20 air changes of HEPA filtered supply air delivered to the space every hour, Price has set a new standard in process control and product quality.

PAO testing is done for every filtered product to guarantee the integrity of the diffuser casing, with all test data logged for future reference. No product leaves the secure cleanroom until it has passed the PAO test and is ready for shipment.



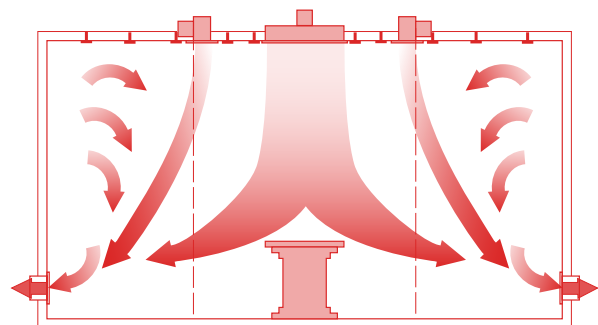
# Operating Rooms

Price O.R. systems offer an integrated approach to meet the specialized needs of the operating room, minimizing the risk of airborne infection and maximizing comfort.



## Laminar Flow System

The Price Laminar O.R. System controls airborne contamination in the operating room by providing low-mixing, uniform vertical supply air from laminar flow diffusers. Price has the industry's largest selection of laminar flow diffusers, including units with integral high-efficiency filters for superior convenience and performance.



## Air Curtain System

The Price Air Curtain O.R. System incorporates laminar flow diffusers over the surgical site and surrounded by Price Hospital Operating Room Diffusers (HORD) to provide a clean surgical zone enclosed in a perimeter air curtain. The air curtain maximizes flexibility by increasing ceiling space for mounting medical equipment, and providing additional cooling capacity to meet the heat loads of the modern O.R.

All Price O.R. Systems conform to ASHRAE Standard 170, 2008 requirements for operating room air distribution.

## Price O.R. System Components



### Hospital Operating Room Linear Slot Diffusers

*(HORD series)*

Linear slot diffusers with integral plenums surround the surgical area, creating a “barrier” of clean air between the room perimeter and the critical surgical space



### Heavy-Duty Cleanroom ceiling systems

*(HDCR series)*

Heavy-duty extruded aluminum ceiling grids facilitate convenient access to the O.R. ceiling plenum without compromising the integrity of the room envelope.



### Laminar Flow Diffusers

*(LFD series)*

Engineered to provide a uniform vertical projection of supply air at controlled low mixing and velocity above the patient and surgical team.



### Integrated Plenum systems

*(HDCR-PL series)*

Multiple laminar flow diffusers integrated into a single pressurized heavy-duty plenum unit provide protective laminar flow with reduced duct connections and installation labor.



### Room Pressure Monitor

*(PRPM)*

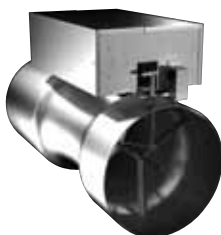
Programmable room pressure monitor with native BACnet communication, LCD display and many optional features.



### Integrated Unistrut® ceiling systems

*(HDCR with Unistrut)*

Unistrut® integration facilitates the delivery of large volumes of laminar airflow through ceilings between structural equipment supports.



### Tracking Venturi Valve Pairs

*(VVA series)*

Supply and return valve pairs, networked to maintain the required volumetric airflow offset in support of consistent room pressurization.



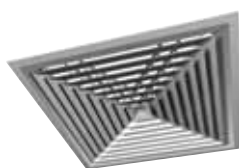
## Patient Rooms

Price has a spectrum of options to satisfy the needs of modern patient rooms, from conventional air distribution strategies to industry leading solutions that maximize performance while minimizing energy consumption.

All Price Patient Room products conform to ASHRAE Standard 170, 2008 requirements.



SPD-HI, High-Induction Square Plaque Diffuser



**Louvered High-Induction Directional Diffusers**

*(SMX/AMX series)*

Horizontal throw diffusers with special discharge vanes to produce shorter throws and rapid temperature mixing for maximum comfort in the patient room.



**Modular Radiant Panels**

*(RPM series)*

Designed to provide radiant heating or cooling for perimeter zones or localized temperature control.



**Displacement Diffusers**

*(Puraflo™ series)*

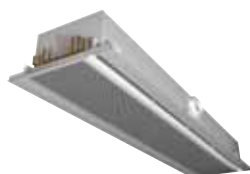
Designed specifically for patient rooms these low-level diffusers improve indoor air quality while reducing energy consumption



**Tracking Venturi Valve Pairs**

*(VVA series)*

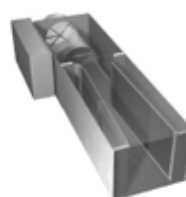
Supply and return valve pairs, factory calibrated and networked to maintain the required volumetric offset between supply and return airflow in support of consistent room pressurization



**Linear Active Chilled Beams**

*(ACBL series)*

Offer maximum comfort and significant potential for energy savings when applied as a recirculating room HVAC unit as described by ASHRAE.



**Quiet Single-Duct Terminal Units**

*(SDVQ series)*

A fully tested and patented ultra quiet terminal unit with integrated silencer.

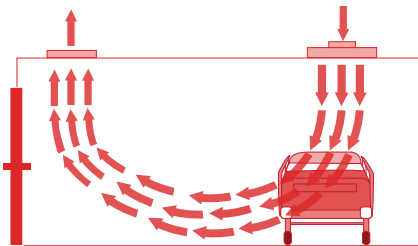


# Isolation Rooms

Isolation room air patterns are paramount to the safety of patients and other hospital occupants.

The Price line of Critical Environment diffusers includes a number of high-capacity units capable of supplying large volumes of air with minimal levels of room air entrainment.

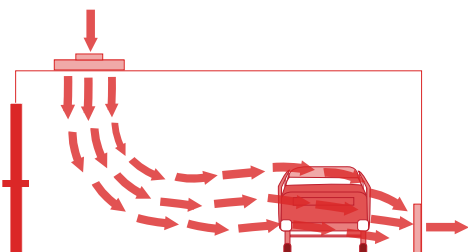
## Protection for Patients



### Protective Environment Isolation Rooms

Supply diffusers are positioned directly above the patient bed, ensuring clean supply air washes over the patient before conditioning the rest of the space and eventually exhausting at high level near the room entrance.

## Protection for Staff & Visitors



### Airborne Infectious Isolation Rooms

Supply diffusers near the room entrance and low-level exhaust near the patient bed support movement of air and airborne contaminants toward the patient and away from the corridor.

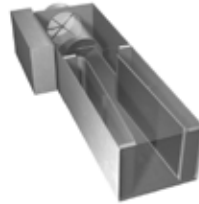
## Price Isolation Room System Components



### Radial Flow Diffusers

*(RFD series)*

Designed to supply large volumes of air in 180° or 90° radial patterns at low velocity, reducing the risk of draft and unwanted distribution of airborne contaminants.



### Quiet Single-Duct Terminal Units

*(SDVQ series)*

A fully tested and patented ultra quiet terminal unit with integrated silencer.



### Flush Face Radial Flow Diffusers

*(FRFD series)*

Designed to produce a low-velocity, multi-directional air distribution pattern. The diffuser's flush face is architecturally appealing and removable from the room side via quarter-turn fasteners.



### Room Pressure Monitor

*(PRPM)*

Programmable room pressure monitor with native BACnet communication, LCD display and many optional features.



### Tracking Venturi Valve Pairs

*(VVA series)*

Supply and return valve pairs, networked to maintain the required volumetric airflow offset in support of consistent room pressurization.



### Laminar Flow Diffusers

*(LFD series)*

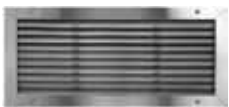
Engineered to provide a uniform vertical projection of supply air at controlled low mixing and velocity, providing predictable room airflow patterns.



### Modular Radiant Panels

*(RPM series)*

Designed to provide radiant heating or cooling for perimeter zones or localized temperature control.



### Hospital Grade Louvered Bar Return Grilles

*(700H series)*

Stainless steel return grilles designed with quick-release fasteners for convenient removal and cleaning.



## Laboratories and Pharmacies

The Price line of Critical Environment products includes solutions designed to deliver large volumes of air to critical zones without causing discomfort to occupants, or interfering with the operation of fume hoods or similar equipment.

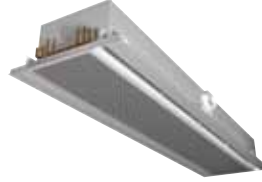
## Price Laboratories and Pharmacies Components



### Radial Flow Diffusers

*(RFD series)*

Designed to supply large volumes of low velocity air in 180° or 90° radial patterns, satisfying high cooling loads without disturbing critical processes.



### Linear Active Chilled Beams

*(ACBL series)*

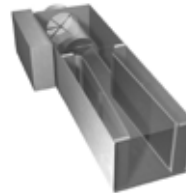
These diffusers allow ventilation and latent loads to be decoupled from sensible loads for significant savings potential in load-driven laboratories.



### Flush Face Radial Flow Diffusers

*(FRFD series)*

Designed to produce a low-velocity, multi-directional air distribution pattern. The diffuser's flush face is architecturally appealing and removable from the room side via quarter-turn fasteners.



### Quiet Single-Duct Terminal Units

*(SDVQ series)*

A fully tested and patented ultra quiet terminal unit with integrated silencer.



### Laminar Flow Diffusers

*(LFD series)*

Delivers uniform vertical supply air at low velocity, reducing the risk of draft and interference with fume hoods or laminar flow workbenches



### Universal Venturi Valves

Supply and exhaust valves with fast-acting actuators and controllers for fume hood or general supply and exhaust applications



### Fan Filter Units

*(FFU series)*

Designed to provide unidirectional vertical flow of filtered air using a fan and motor assembly to provide a static pressure boost for areas being renovated or with pressure drop issues

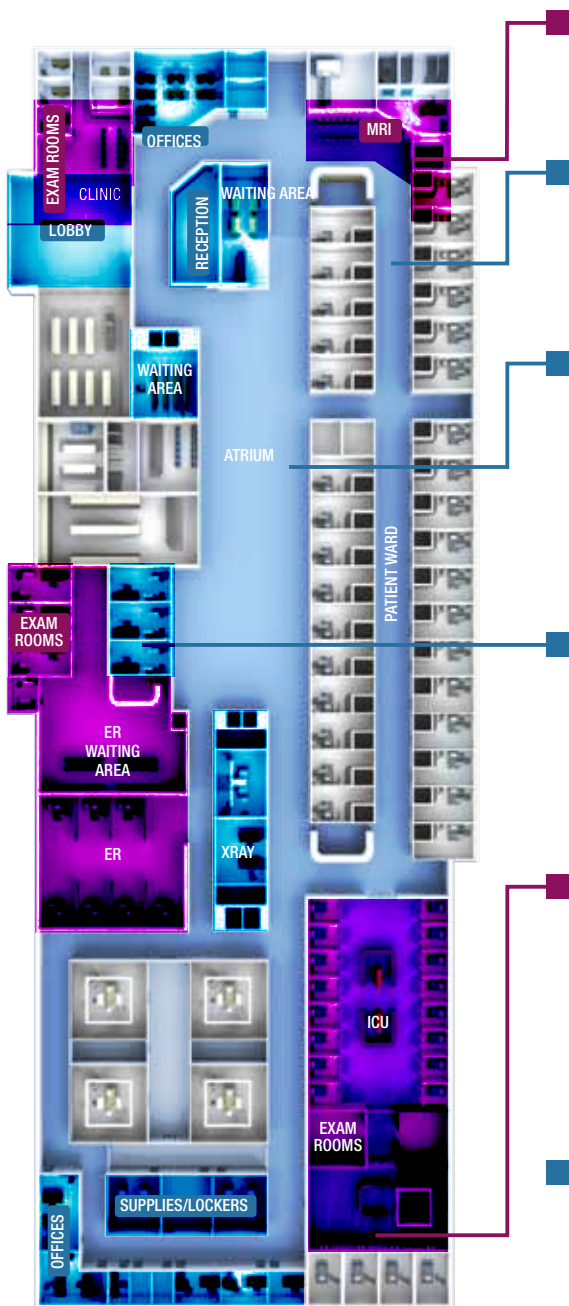


### SS Exhaust Control Valves

Continuously welded stainless steel control valves for corrosive applications.

# Support & Common Areas

Price is the only manufacturer of air distribution products for healthcare that specializes in solutions for the entire healthcare facility, helping to ensure high performance and improved indoor air quality throughout the building.



## MRI

Price offers a full line of non ferrous products suitable for use in MRI rooms.

## Hallways

High induction outlets such as the Price Square Plaque Diffuser (SPD) or directional louvered air outlets (SMD) maximize comfort while keeping sound levels low.

## Waiting Areas, Lobbies & Atria

An alternative to traditional overhead systems, displacement systems have been known to reduce occupant exposure to airborne contaminants. The lighter than air contaminants are displaced upwards out of the occupied zone and exhausted from the room.

## Offices

Conventional overhead supply systems are always a good choice for offices; however, Displacement Ventilation is another option that features high indoor air quality, high levels of comfort and low noise levels.

## Examination Rooms

Price SCD Square Cone Diffusers are common in examination rooms and provide a comfortable, draft free, quiet environment. Displacement outlets are also viable, displacing heat and contaminants up and away from the doctors and patients to high level returns.

## Other Products & Solutions

Price can provide a complete hospital solution with our full line of Terminal Units, Venturi Valves and Controls to compliment Price air outlets. Price has the products and resources to meet both standard and custom requirements.

# Price Unitee Cleanroom Ceiling Systems

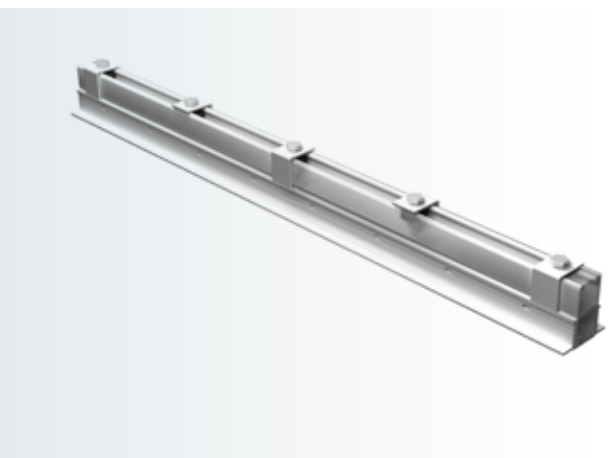
The Price Unitee Cleanroom Ceiling Systems are designed to provide convenient access to the ceiling space as well as support the installations of diffusers, infill panels, light fixtures and Unistrut. The continuous gasket prevents leakage between the ceiling plenum and occupied space while the sterile white powder coat finish is formulated to resist deterioration from hospital grade cleaners and disinfectants.



## Unitee HDCR Ceiling System

Unitee HDCR Ceiling Systems are supplied in large, factory welded modules and provide a strong ceiling support structure for easy field installation.

- High quality, heavy duty extruded aluminum T-bars
- Large factory welded modules for field assembly
- Closed-cell polyethylene gasket helps maintain the integrity of the room envelope
- Permitted for use in operating rooms by the 2010 FGI Guidelines for the Construction of Health Care Facilities



## Unitee HDCR with Unistrut

The Price HDCR with integrated Unistrut® combines equipment, laminar flow diffusers (with or without HEPA filters) and heavy-duty framing for a sealed ceiling system.

- Custom-engineered system components including ceiling-level Unistrut® rails for mounting equipment
- Fill-in panels for access to ceiling plenum

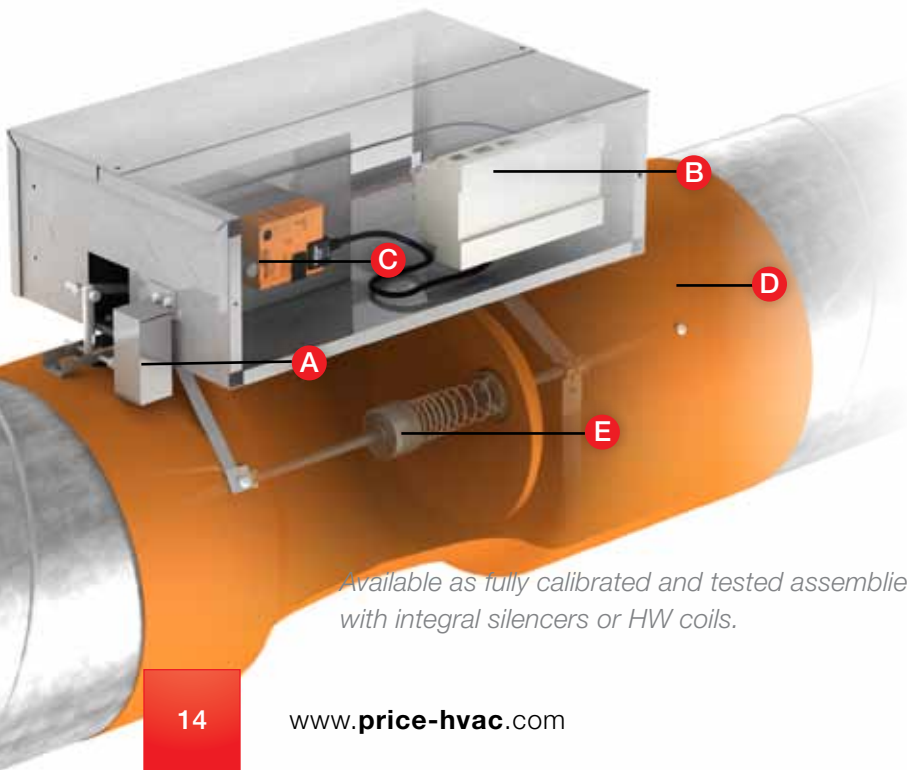
# Venturi Valves

Price's wide range of Venturi Valves and controls can meet the needs of virtually any critical environment application.

Price Venturi Valves offer mechanical pressure independence, unmatched turndown ratios as well as flow control without airflow sensors to name just a few advantages. Every Price Venturi Valve is factory calibrated using N.I.S.T. traceable equipment.

## Universal Venturi Valves

Designed for straightforward integration with third party controls. Ideal for owners or engineers with a preference for consistent control solutions throughout their facility, simplifying integration with the building management system and reducing complexity of future maintenance.



*Available as fully calibrated and tested assemblies with integral silencers or HW coils.*

### **A Potentiometer Feedback**

Measures flow based on plunger shaft position, eliminating the need for airflow sensors that may become less accurate over time due to the buildup of airborne dust and lint. Injection molded or stainless steel cross-flow sensors are also available for direct flow measurement.

### **B Linear Module (LM)**

Linearizes the signal from the potentiometer to simplify field programming. The LMX option includes an alarm output signal. When system pressure is below the valve operating range.

### **C Actuator**

Standard or fast-acting actuators to suit any application.

### **D Heresite Coating**

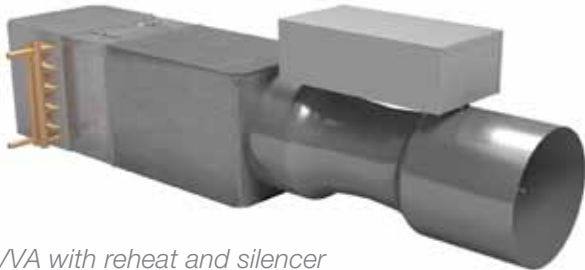
Heresite coating is optional for exceptional corrosion resistance in fume hood and similar exhaust applications.

### **E Spring**

The engineered spring adjusts immediately to changes in duct static pressure to maintain consistent flow.

# Supplemental VVA Features

Price VVA venturi valves are available with factory built and mounted reheat coils and silencers.



*VVA with reheat and silencer*

## Reheat Coils

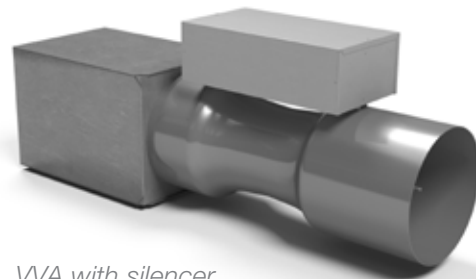
All Price manufactured reheat coils are AHRI certified and come factory installed on their respective venturi valves. Factory manufactured and installed reheat coils offer multiple benefits including single-source support and elimination of the time consuming on-site processes of matching coils to valves and installing coils. For even greater convenience, Price can offer a variety of different valve packages to go with any reheat coil.

## Silencers

Price offers a variety of different silencers to suit almost any noise control issue for critical environment applications. The world-class Price Sound Lab allows all silencer designs to be effectively tested with the venturi valves as assemblies. This ensures all Price silencers are designed with close-coupling effects taken into account so that generated noise does not counteract any benefit the silencer may have offered.



*VVA with reheat*



*VVA with silencer*

# Price Tracking Pair Solutions

Supply and exhaust control valve pairs, designed as packaged solutions to maintain a consistent volumetric offset in patient, isolation and operating rooms.

## Price Tracking Pair Controllers (PIC-VV):

All Price Tracking Pair Controllers will maintain a consistent volumetric offset between the supply and exhaust air valves in VAV systems to ensure accurate control of room pressure. All controllers are BACnet native and include available reheat control. Settings are easily adjustable in the field through the BAS or using a Price LCD thermostat. Application specific controllers are available for the following configurations:

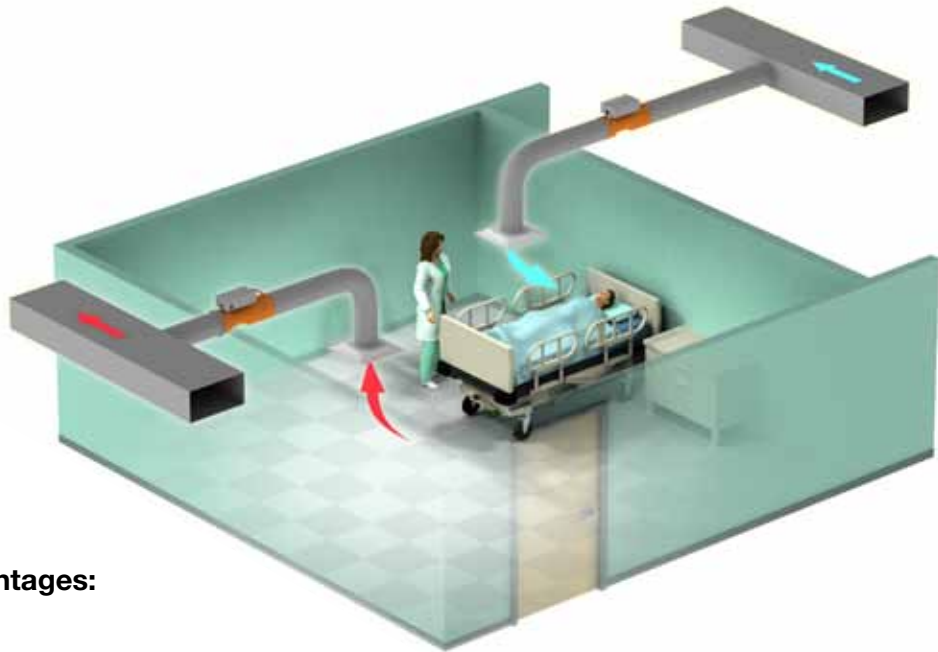
- Venturi Supply / Venturi Exhaust
- Terminal Unit Supply / Venturi Exhaust

Utilizing Price Venturi Valves on the exhaust side eliminates the risk of airborne lint interfering with the accuracy of airflow sensors and associated loss of room pressure control.



### Price Room Pressure Monitor (PRPM):

This BACnet native device monitors room pressure conditions and features visual and audible alarms for signaling unsafe conditions. Illuminating sidebars provide 180 degree visual status information for assessing room conditions from anywhere in the corridor. Intuitive menus and button selection ensure nurses and other facility staff are comfortable with the PRPM operation.



### Price Solution Advantages:

- Single source for equipment: valves, reheat coils, silencers, controllers, room pressure monitors, thermostats
- Single source for application support
- Utilize terminal units on the supply side to reduce initial and operating costs (lower supply-side system operating pressure)

# High-Efficiency Filters

## Products with High-Efficiency Filters

Designed for applications where upstream filtration is insufficient for room requirements, Price offers a full line of products with integral high-efficiency filters. Utilizing high-efficiency filters with gel-seal frames and diffusers with continuously welded knife-edges, supply air is unable to enter the critical room space without first passing through the filter.



### Fan Filter Units

*(FFU series)*

Provides a unidirectional vertical flow of filtered air using a fan and motor assembly to provide a static pressure boost for areas being renovated or with pressure drop issues.



### Laminar Flow Diffusers

*(LFDC series)*

Engineered to provide a uniform vertical projection of supply air at controlled low mixing and velocity.



### Radial Flow Diffusers

*(RFDC/FRFDC series)*

Designed to supply large air volumes in 180° or 90° radial patterns at low velocity.



### Louvered Directional Diffusers

*(AMDC series)*

Horizontal 4-way discharge with high flow rates and excellent mixing characteristics for maximum comfort.

# Training & Education

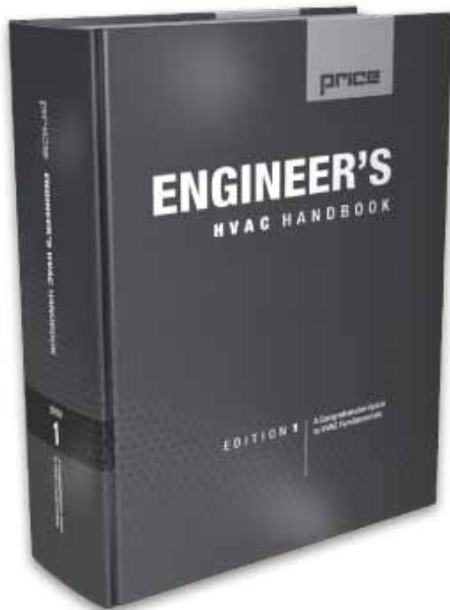


Critical Environments Training Courses are held several times per year at Price.

Courses are available for consulting and design professionals. Topics covered include an overview of PRCN, the Price All-in-One selection software, standard and special / custom products and applications, and a review of current standards.

Lab tours and in-house training are available at Price Research and Training Facilities, featuring flow visualization capabilities for Operating Room Systems and other CE products.

# Price Engineer's Handbook



## The Most Comprehensive Guide to HVAC Fundamentals

The Price Engineer's Handbook is a compilation of the engineering knowledge related to the application of air distribution and Critical Environments products and approaches gained at Price over the past 60 years.

The Handbook contains chapters on Critical Environments and its applications including liberal use of examples and graphics to help illustrate and explain concepts and systems.

**Chapter 20: Introduction to Health Care HVAC**

**Chapter 21: Applications of Health Care HVAC**

Contact your local Price sales representative to reserve your copy.



2975 Shawnee Ridge Court  
Suwanee, Georgia USA 30024  
Ph: 770.623.8050 Fax: 770.623.6404

- U.S. Head Office
- Price Technical Center
- Atlanta Manufacturing Facility



1290 Barrow Industrial Parkway  
Winder, Georgia USA 30680-5704

- Atlanta Manufacturing Facility



999 North Thornton Road  
Casa Grande, Arizona USA 85222-3809

- Price Technical Center West
- Phoenix Manufacturing Facility



638 Raleigh Street  
Winnipeg, Manitoba Canada R2K 3Z9  
Ph: 204.669.4220 Fax: 204.663.2715

- Canadian Head Office
- Price Research Center North
- International Sales Office
- Winnipeg Manufacturing Facility



130B Pippin Road  
Vaughan, Ontario Canada L4K 4X9

- Toronto Manufacturing Facility

**Product Improvement** is a continuing endeavour at Price. Therefore, specifications are subject to change without notice. Consult your Price Sales Representative for current specifications or more detailed information. Not all products may be available in all geographic areas.

All goods described in this brochure are warranted as described in the Limited Warranty shown at the web site [www.price-hvac.com](http://www.price-hvac.com).

The Price catalog is available online at [www.price-hvac.com](http://www.price-hvac.com)

Grilles & Diffusers	Critical Environments	Terminals & Controls	Sustainable Building	Noise Control