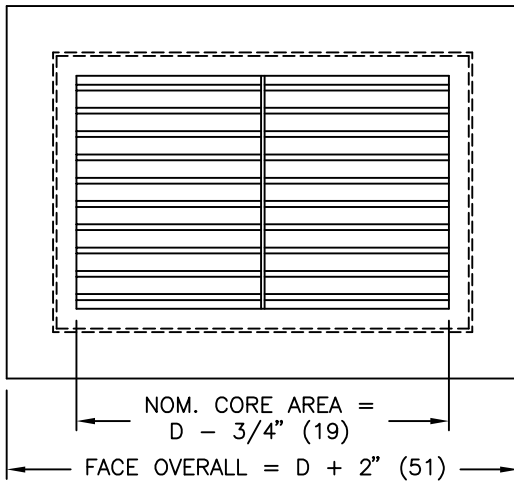
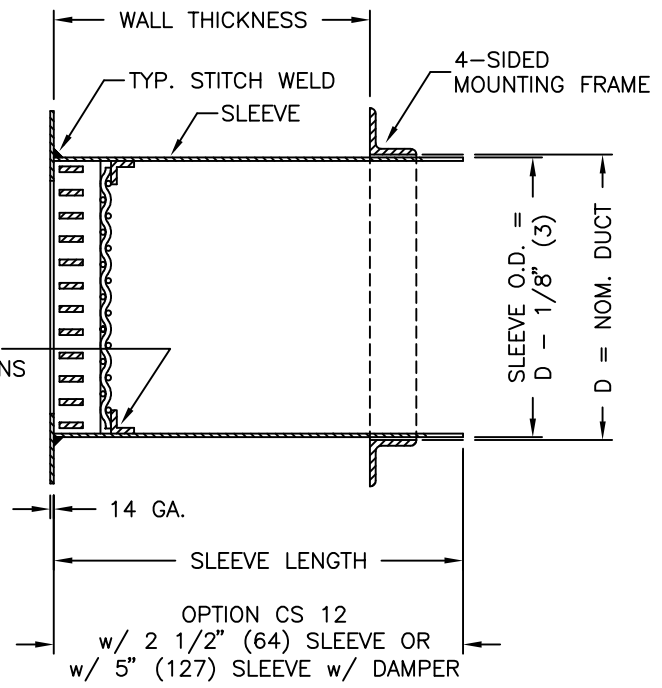


MSSL - MEDIUM SECURITY STRAIGHT LOUVER



WIRE MESH WELDED TO SUPPORT MULLIONS AND SECURED BY ANGLES



STANDARD CONSTRUCTION:

FACE PLATE:

FP14 14 GA. HOT ROLLED STEEL (HRS)

OPTIONS:

- FP187 3/16" (5)
- FP10 10 GA.
- FP12 12 GA.

LOUVERS:

STANDARD CORE STYLE C1: 1/8" x 1/2" (3 x 13) CRS LOUVERS ON 1/2" (13) CENTERS 0° DEFLECTION THRU 14 GA. VERTICAL SUPPORT MULLIONS LOCATED ON 6" (152) CENTERS

CORE STYLE OPTIONS:

- C2: 1/8" x 1/2" (3 x 13) ON 1/2" (13) CENTERS, 15° DEFLECTION
- C3: 1/8" x 1/2" (3 x 13) ON 1/2" (13) CENTERS 40° DEFLECTION
- C4: 1/8" x 3/4" (3 x 19) ON 3/4" (19) CENTERS 0° DEFLECTION
- C5: 1/8" x 3/4" (3 x 19) ON 1/2" (13) CENTERS 0° DEFLECTION
- C6: 1/8" x 3/4" (3 x 19) ON 1/4" (6) CENTERS 0° DEFLECTION

WIRE MESH:

WM 10 GA. x 3/8" (10) CLEAR OPENING STEEL WIRE MESH

SLEEVE:

S14 14 GA. HRS, LENGTH AS REQUIRED, STITCH WELDED SEAMS

OPTIONS:

- S187 3/16" (5)
- S10 10 GA.
- S12 12 GA.
- CWS CONTINUOUSLY WELDED SEAMS
- OPTION S5 (NOT AVAILABLE WITH MOUNTING FRAME - MF)

4-SIDED MOUNTING FRAME:

MF3 1" x 1" x 1/8" (25 x 25 x 3) HRS ANGLE (SHIPPED LOOSE FOR FIELD WELDING)

OPTIONS:

- MF1
- MF2
- MF4

FINISH:

- B12 WHITE
- (OPTIONAL FINISHES AVAILABLE)

OPTIONS & ACCESSORIES:

MATERIAL: (ONLY AVAILABLE IN 10 GA. CONSTRUCTION)
 ALL ALUMINUM (MINIMUM SECURITY)
 ALL 304 STAINLESS STEEL

FASTENING METHOD OPTIONS:

- MR6
- MR7
- CS 12 SPNR
- CS 12 TORX
- CS 12 SPNR-SS
- CS 12 TORX-SS

DAMPER OPTIONS:

- 3BF
- 3BR

BARRIER BAR STYLE OPTIONS:

- BB16
- BB17
- BB18
- BB19
- BB20
- BB21
- BB22
- BB23

TRANSFER GRILLE CONSTRUCTION OPTIONS:

- TGCS

NOTES:

- BARRIER BARS AND MOUNTING FRAMES ARE NOT AVAILABLE WITH OPTION CS 12
- MINIMUM SIZE = 6" x 6" (152 x 152)
- MAXIMUM SIZE = 30" x 30" (762 x 762)
- FACTORY TOLERANCE ±1/32" (1)
- SLEEVE LENGTH MUST BE SPECIFIED ON ORDER
- REFER TO SUBMITTAL 233035 FOR OPTIONS
- CONSULT FACTORY FOR SPECIAL OPTIONS
- MINIMUM SLEEVE LENGTH WITH OPTIONS 3BF AND 3BR = 5" (127).

ALL METRIC DIMENSIONS () ARE SOFT CONVERTED. IMPERIAL DIMENSIONS ARE CONVERTED TO METRIC AND ROUNDED TO THE NEAREST MILLIMETER.

PROJECT:		PRICE®	
ENGINEER:		<i>MG</i>	MSSL MEDIUM SECURITY STRAIGHT LOUVER
CUSTOMER:		233041	
SUBMITTAL DATE:	SPEC. SYMBOL:	2013/10/21	